



The **New** Encana:
the clear energy choice

Jeff Wojahn | Executive Vice-President & President,
USA Division

Division Overview

Calgary | March 16, 2010

New York | March 18, 2010

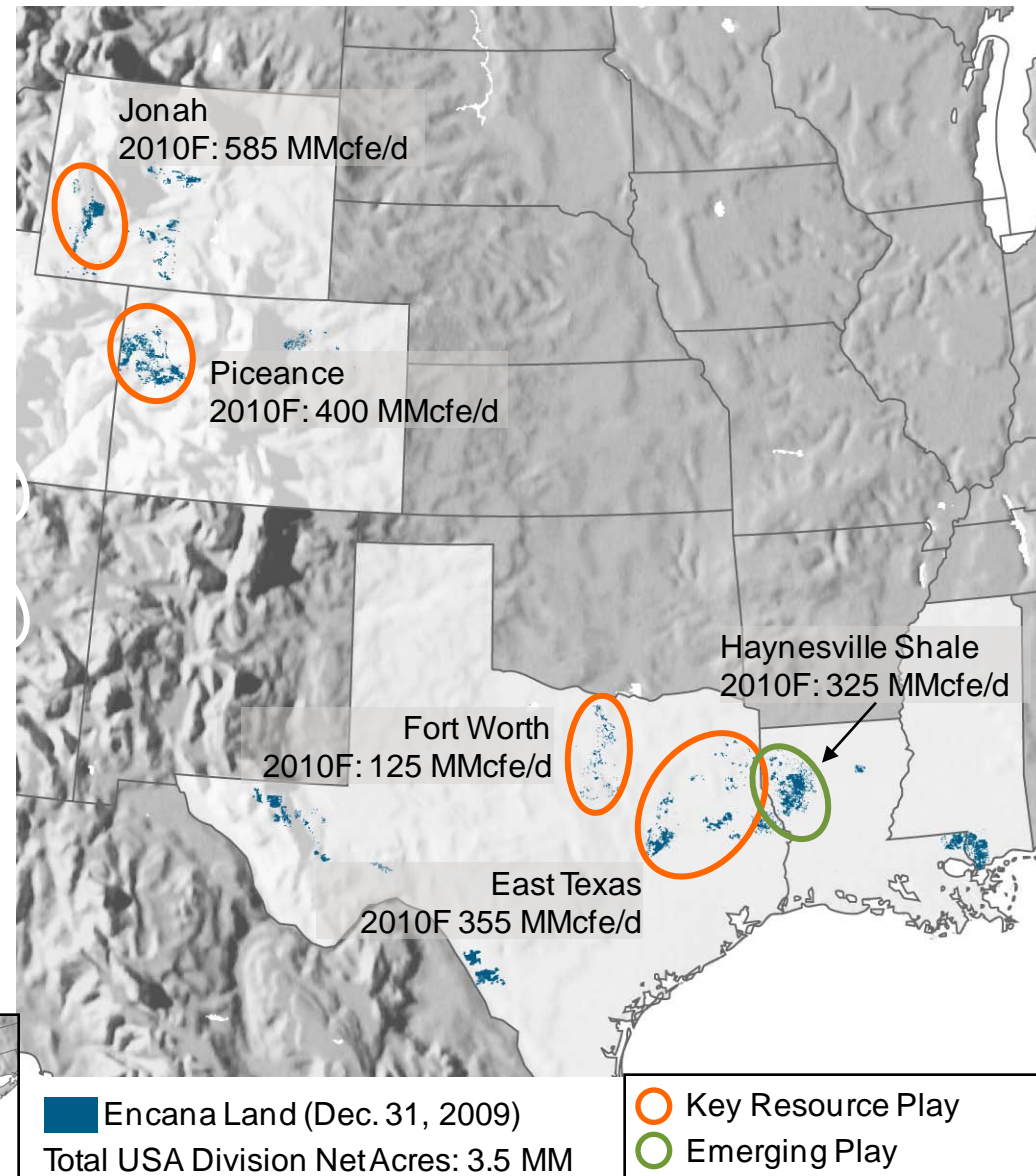
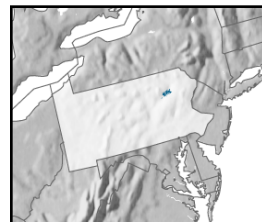


USA Division

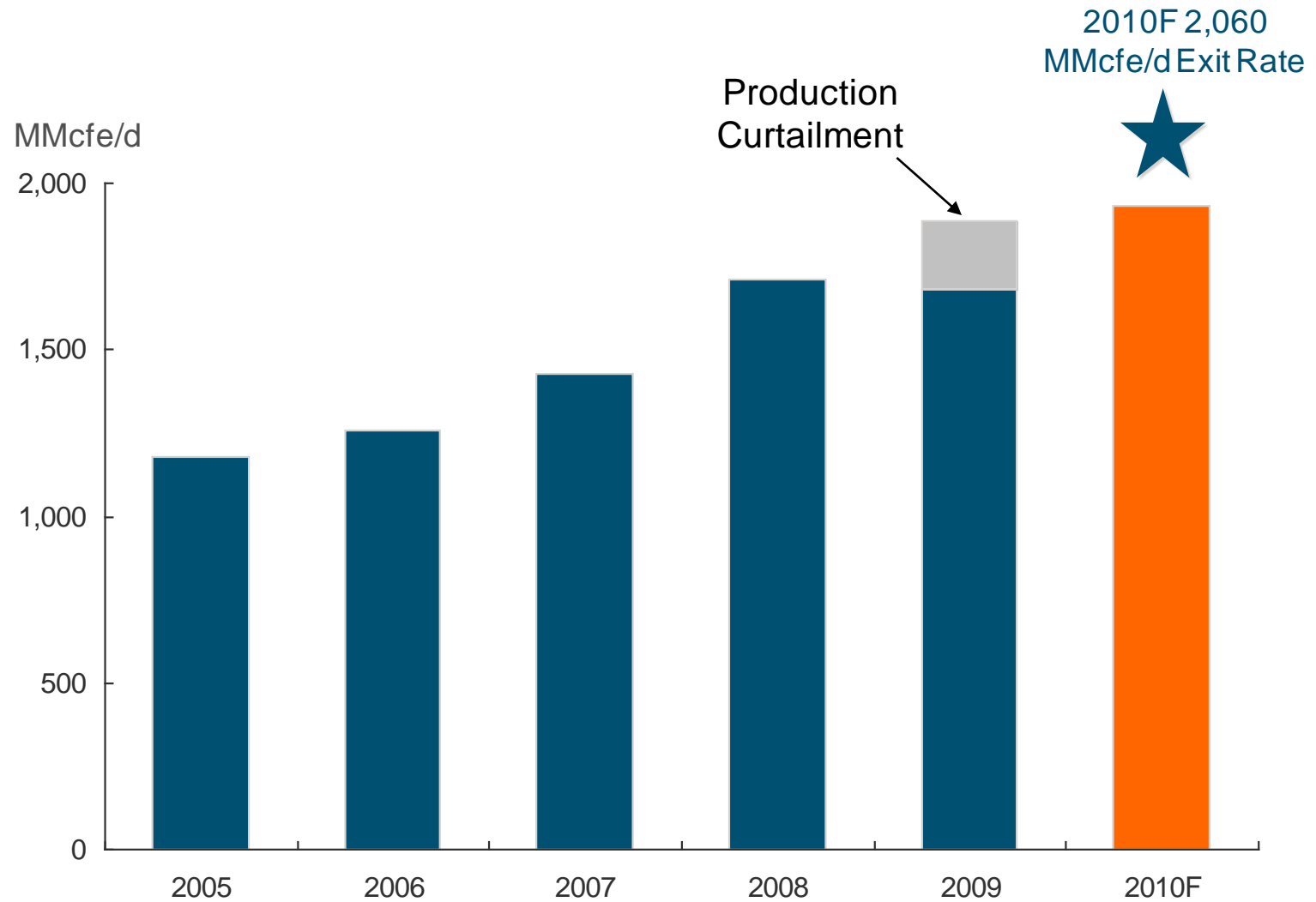
Strategic Focus

- Foster strong environmental and safety culture
- Advance Haynesville and other emerging plays
- Maximize use of available third-party funding
- Advance shale gas technology

Marcellus, USA



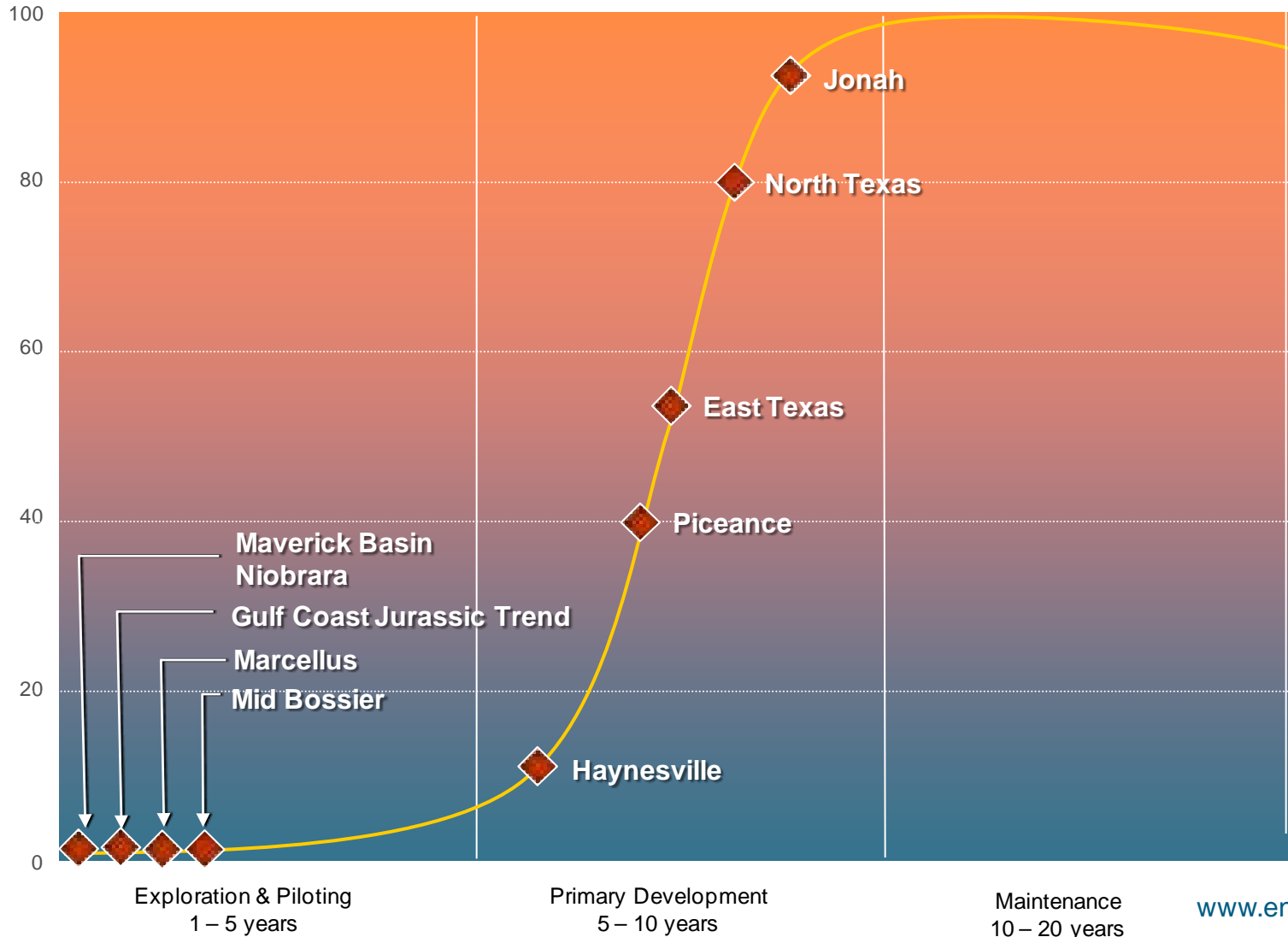
USA Division Production Growth



Key Resource Play Life Cycle

USA Division

Peak Rate (%)



USA Division

Total Resource

Total net well inventory

- $1P + 1C = 7,600$
- $3P+3C = 18,300$

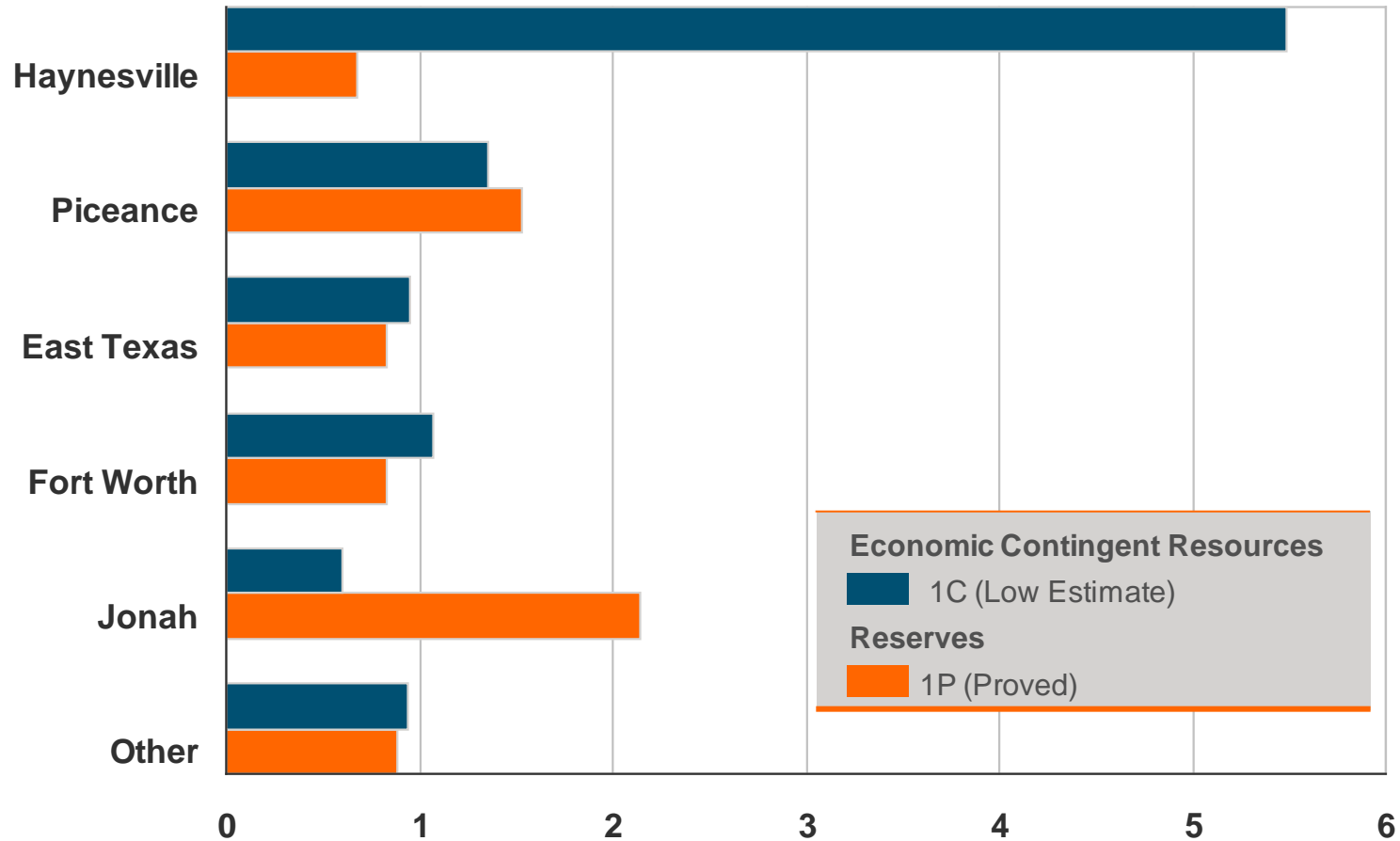
Reserves (Tcfe)		
1P	2P	3P
6.9	11.4	14.3
Economic Contingent Resources (Tcfe)		
1C	2C	3C
10.4	22.7	36.6



USA Division

Tremendous Resource Potential – High Degree of Certainty

Proved Reserves and 1C Economic Contingent Resources (Tcfe)*



*Evaluated by independent qualified reserve evaluators in accordance with SPE classifications

USA Division

High Value Inventory

	Net Acres (1,000s)	Inventory* (net wells)	2010F Net Well Count	IRR %	Supply Cost *** (\$/MMbtu)
Jonah	127	1,400	110	>50	2.90 - 4.00
Piceance	869	1,700	120	>30	1.00 - 5.25****
Fort Worth	76	900	20	>30	3.10 - 4.30
East Texas	267	600	25	>50	3.70 - 4.20
Haynesville	429	1,600	110	>50	3.75 - 4.45
Other **	1,692	1,400	75	>50	2.15 - 3.25
Total	3,460	7,600	460	>40	2.60 - 4.25

*Inventory based on YE09 1P Reserves & 1C Economic Contingent Resources

**Includes Wind River, DJ, Paradox, Green River

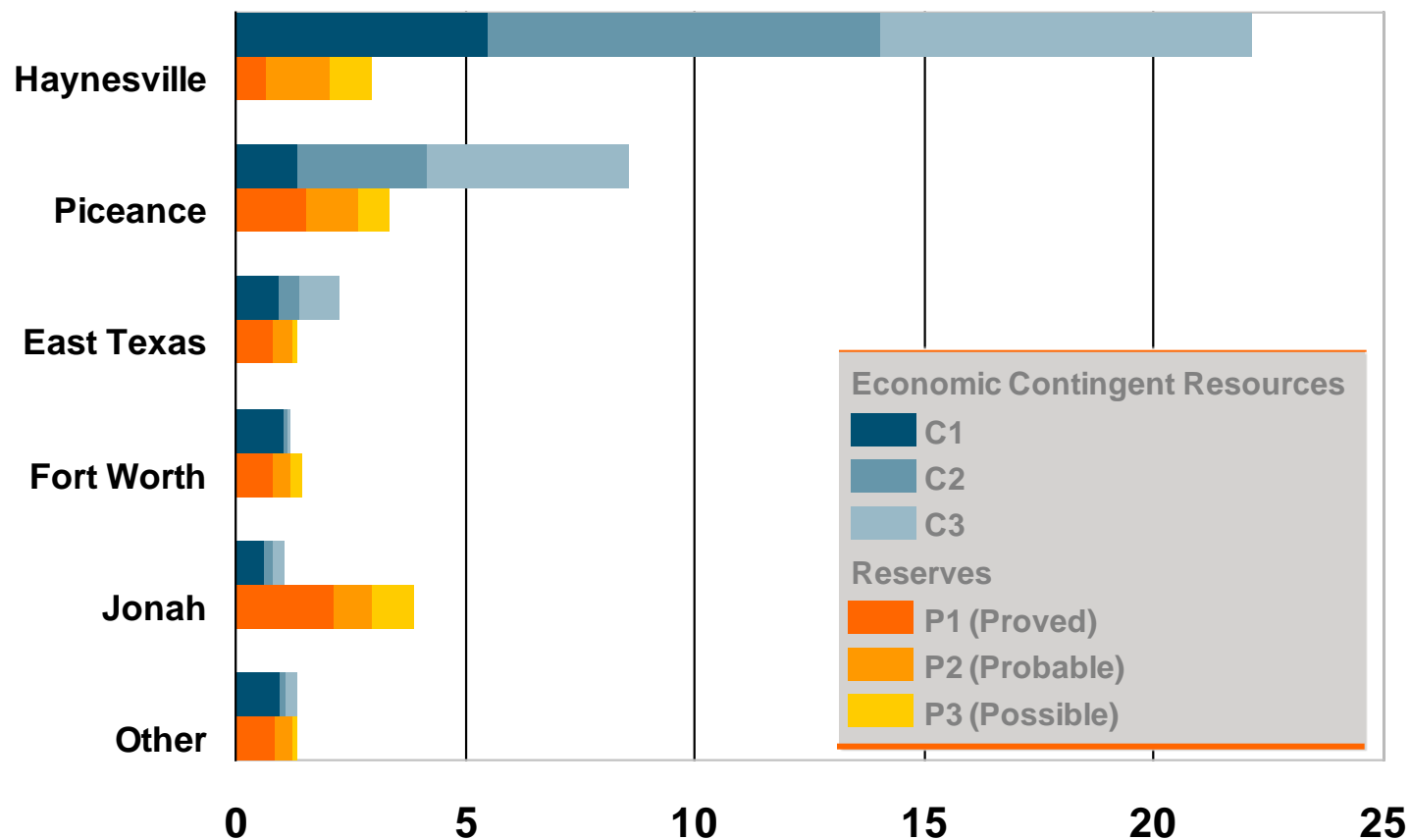
*** Does not include G&A charges

****Metrics include funding leveraged through joint ventures

USA Division

Tremendous Resource Potential

Reserves and Economic Contingent Resources (Tcfe)*



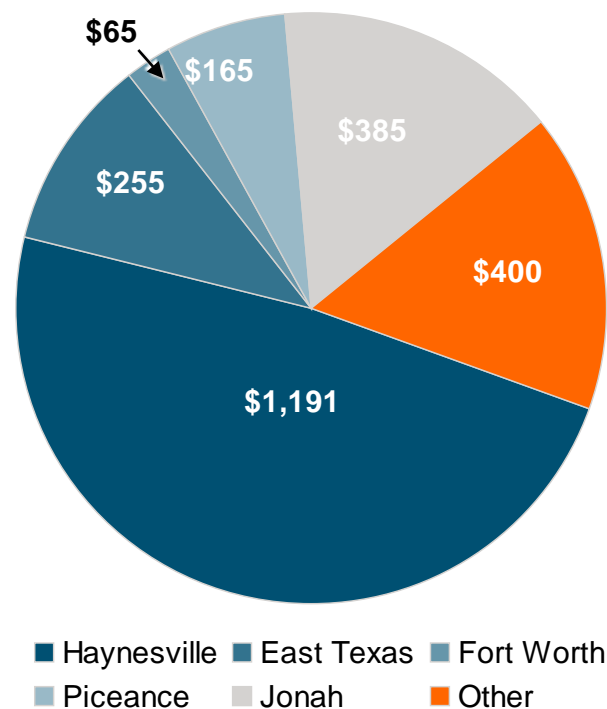
* Evaluated by Independent Qualified Reserves Evaluators as at December 31, 2009

USA Division

2010 Budget Overview

	2009 Actual	2010F Budget	% Change
Gas Production (MMcf/d)	1,616	1,875	16
Liquids Production (Mbbbls/d)	11.3	10	(12)
Total Production (MMcfe/d)	1,684	1,935	15
Exit Rate (MMcfe/d)	1,804	2,060	14
Core Capital (\$MM)*	1,821	2,461	35
Net Wells Drilled (#)	392	460	17
Total Operating Costs (\$/Mcf)	0.53	0.64	21

Capital by KRP (\$MM)



*Capital includes gas gathering operations & G&A

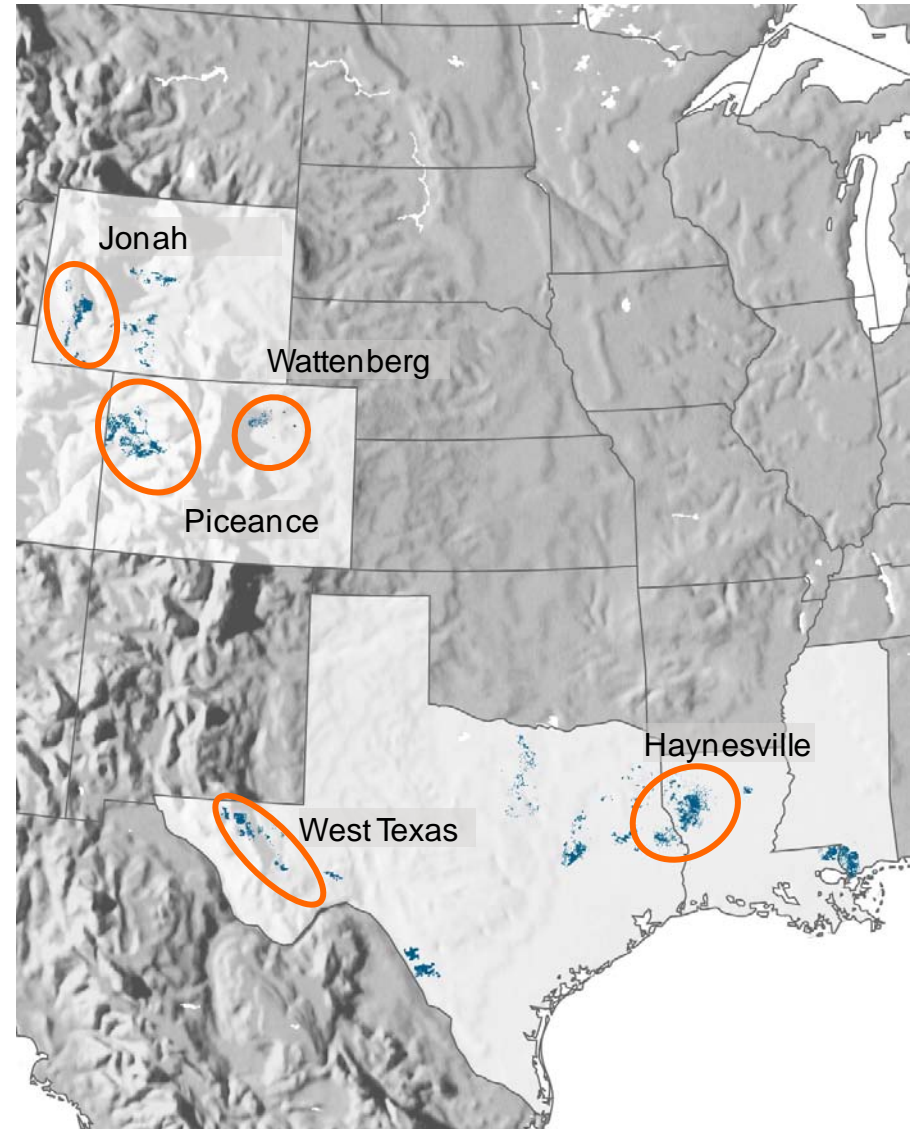
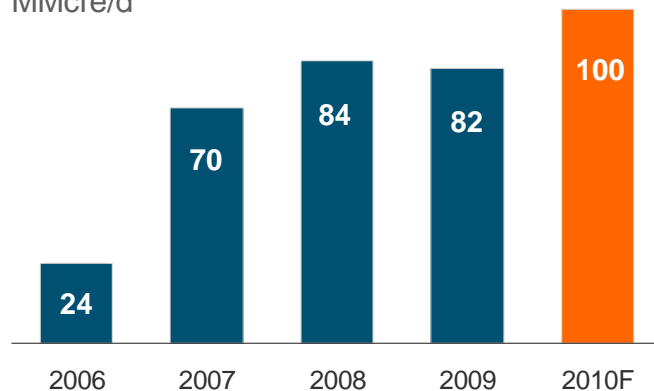
USA Division

Joint Venture Activity

- Very active: over 30 partners
- Attracted \$2.4 billion capital
 - \$0.9 billion deployed by YE09
 - \$1.5 billion to be invested over next 3 years
- 1,784 gross well commitments
 - 426 wells drilled
- 2010 commitments in place
 - \$300 million

Production from Third Party Capital

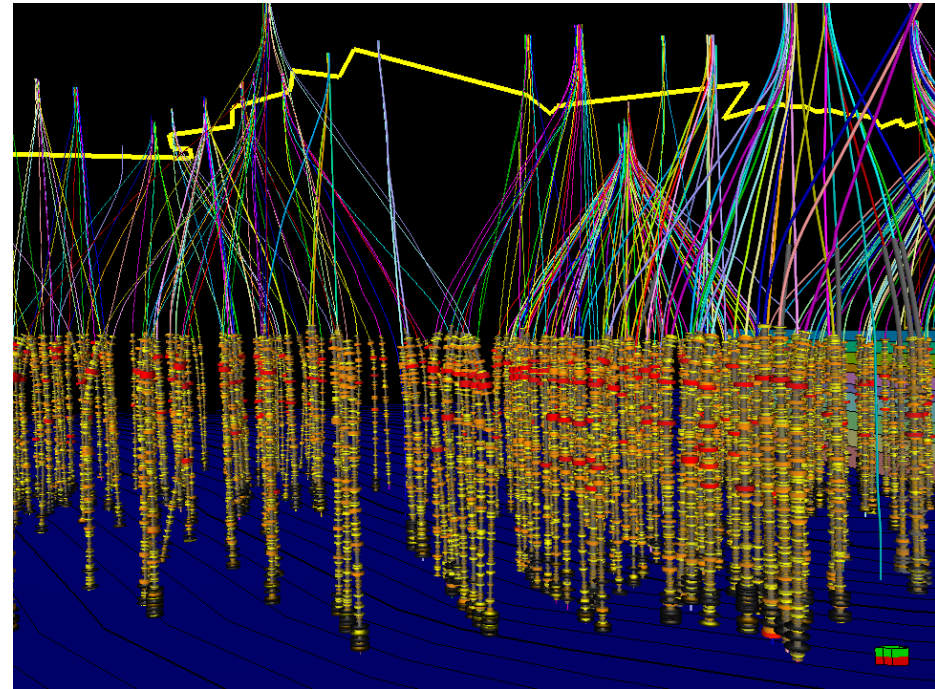
MMcfe/d



Keys to Unlocking Shale Gas

Optimizing Technology and Efficiencies

- Reservoir characterization
 - Selecting core drilling areas
- Advance horizontal drilling
 - Deeper targets
 - Longer laterals
- Completion optimization
 - Increased stages
 - Increased water and sand volumes
- Cost optimization
 - Gas factory
 - Supply management

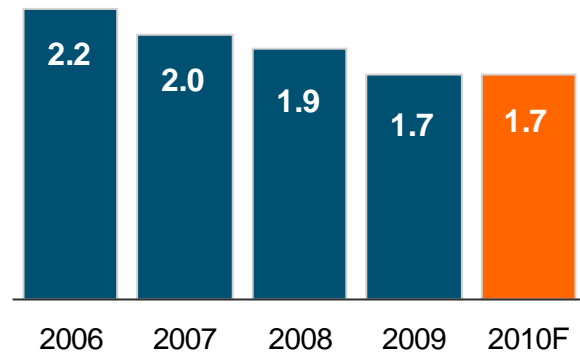


Keys to Unlocking Shale Gas

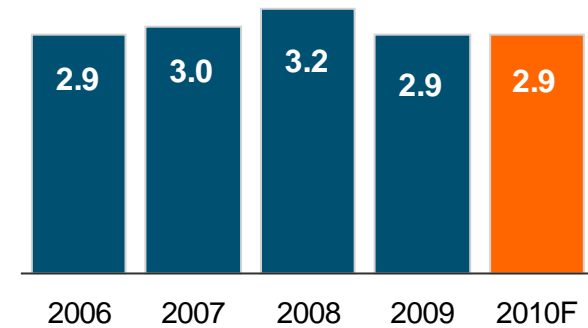
Continuing Operational Improvements

15 – 20% Reduced Well Cost DC&T

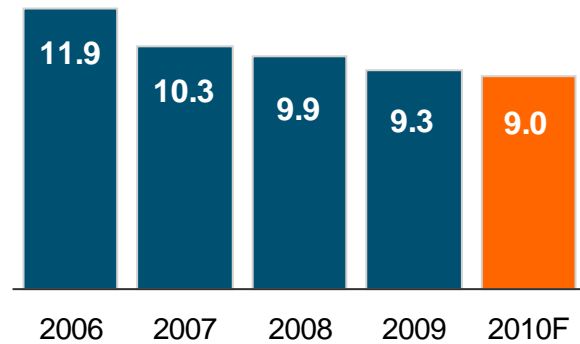
Piceance
\$MM



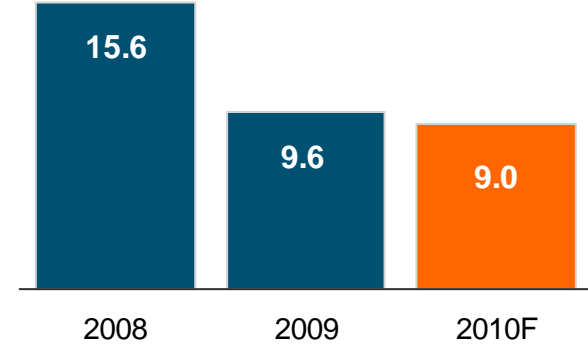
Jonah
\$MM



East Texas Deep Bossier
\$MM



Haynesville
\$MM



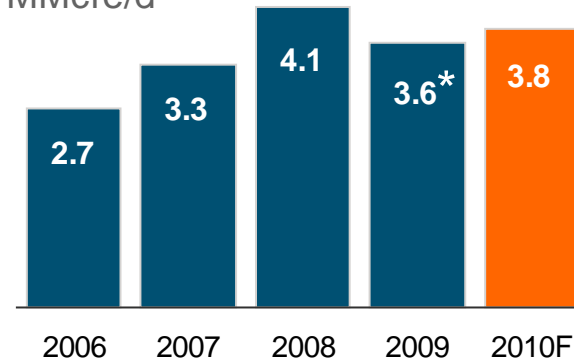
Keys to Unlocking Shale Gas

Continuing Operational Improvements

50% to 150% Improvement in 30 Day Average IP

- Increased frac stages
- Increased water volumes
- Enhanced pay selection

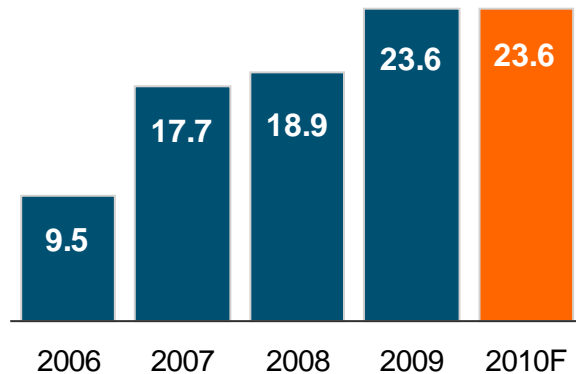
Jonah
MMcfe/d



*Decrease due to down spacing

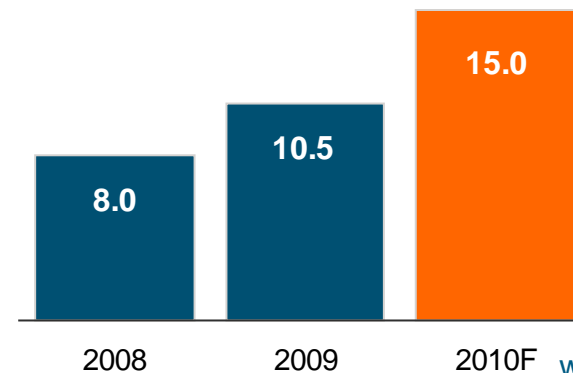
East Texas Deep Bossier

MMcfe/d



Haynesville

MMcfe/d



Regulatory Environment & Challenges

- Fracture stimulation is safe and environmentally benign
- Water management is an integral element of shale gas development
- Gas factory shale development minimizes land impact



USA Division Summary

- Proven track record of production and reserve growth
 - 2010 growth powered by Haynesville
- Existing resource base positioned to support doubling of company
- Experienced people and a culture of resource play development
- Leaders in execution and technology application
- Vast high quality contingent resource

