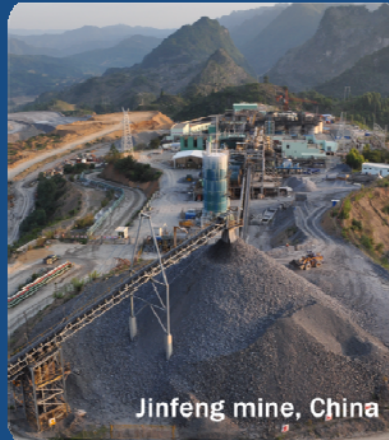


Eldorado Gold Corporation



2010 European Gold Forum

April 2010

Forward-Looking Statements



Certain of the statements made in this Presentation may contain forward-looking statements within the meaning of the United States Private Securities Litigation Reform Act of 1995 and forward-looking information within the meaning of applicable Canadian securities law. These forward-looking statements or information include, but are not limited to statements or information with respect to financial disclosure, estimates of future production, the future price of gold, estimations of mineral reserves and resources, estimates of anticipated costs and expenditures, development and production timelines and goals and strategies.

We have made numerous assumptions about the forward-looking statements and information contained herein, including among other things, assumptions about the price of gold, anticipated costs and expenditures and our ability to achieve our goals. Even though our management believes that the assumptions made and the expectations represented by such statements or information are reasonable, there can be no assurance that the forward-looking statement or information will prove to be accurate.

Forward-looking statements and forward-looking information by their nature are based on assumptions and involve known and unknown risks, uncertainties and other factors which may cause the actual results, performance or achievements of the Company to be materially different from any future results, performance or achievements expressed or implied by such forward-looking statements or information. Should one or more of these risks and uncertainties materialize, or should underlying assumptions prove incorrect, actual results may vary materially from those described in forward-looking statements or information. Such risks, uncertainties and other factors include, among others, the following: gold price volatility; discrepancies between actual and estimated production, mineral reserves and resources and metallurgical recoveries; mining operational and development risk; regulatory restrictions, including environmental regulatory restrictions and liability; risks of sovereign investment; currency fluctuations; speculative nature of gold exploration; global economic climate; dilution; share price volatility; competition; loss of key employees; additional funding requirements; and defective title to mineral claims or property, as well as those factors discussed in the section entitled "Risk Factors" in the Company's Annual Information Form & Form 40-F dated March 31, 2010. Should one or more of these risks, uncertainties or other factors materialize, or should underlying assumptions prove incorrect, actual results may vary materially from those described in forward-looking statements and information.

Although we have attempted to identify factors that would cause actual actions, events or results to differ materially from those described in forward-looking statements and information, there may be other factors that cause actual results, performances, achievements or events to not be as anticipated, estimated or intended. Also many of the factors are beyond our control. There can be no assurance that forward-looking statements or information will prove to be accurate, as actual results and future events could differ materially from those anticipated in such statements. Accordingly you should not place undue reliance on forward-looking statements or information.

Except as required by law, we do not expect to update forward-looking statements and information continually as conditions change and you are referred to the full discussion of the Company's business contained in the Company's reports filed with the securities regulatory authorities in Canada and the U.S. All forward-looking statements and information contained in this presentation are qualified by this cautionary statement.

Cautionary Note to U.S. Investors: Mineral Reserves and Mineral Resources - The terms "mineral reserve", "proven mineral reserve" and "probable mineral reserve" referred to in the Company's disclosure are Canadian mining terms as defined in accordance with National Instrument 43-101 - Standards of Disclosure for Mineral Projects under the guidelines set out in the Canadian Institute of Mining, Metallurgy and Petroleum (the "CIM") Standards on Mineral Resources and Mineral Reserves, adopted by the CIM Council on August 20, 2000 as may be amended from time to time by the CIM. These definitions differ from the definitions in the United States Securities & Exchange Commission ("SEC") Guide 7. Under SEC Guide 7 standards, a "final" or "bankable" feasibility study is required to report reserves, the three-year historic average price is used in any reserve or cash flow analysis to designate reserves and the primary environmental analysis or report must be filed with the appropriate governmental authority.

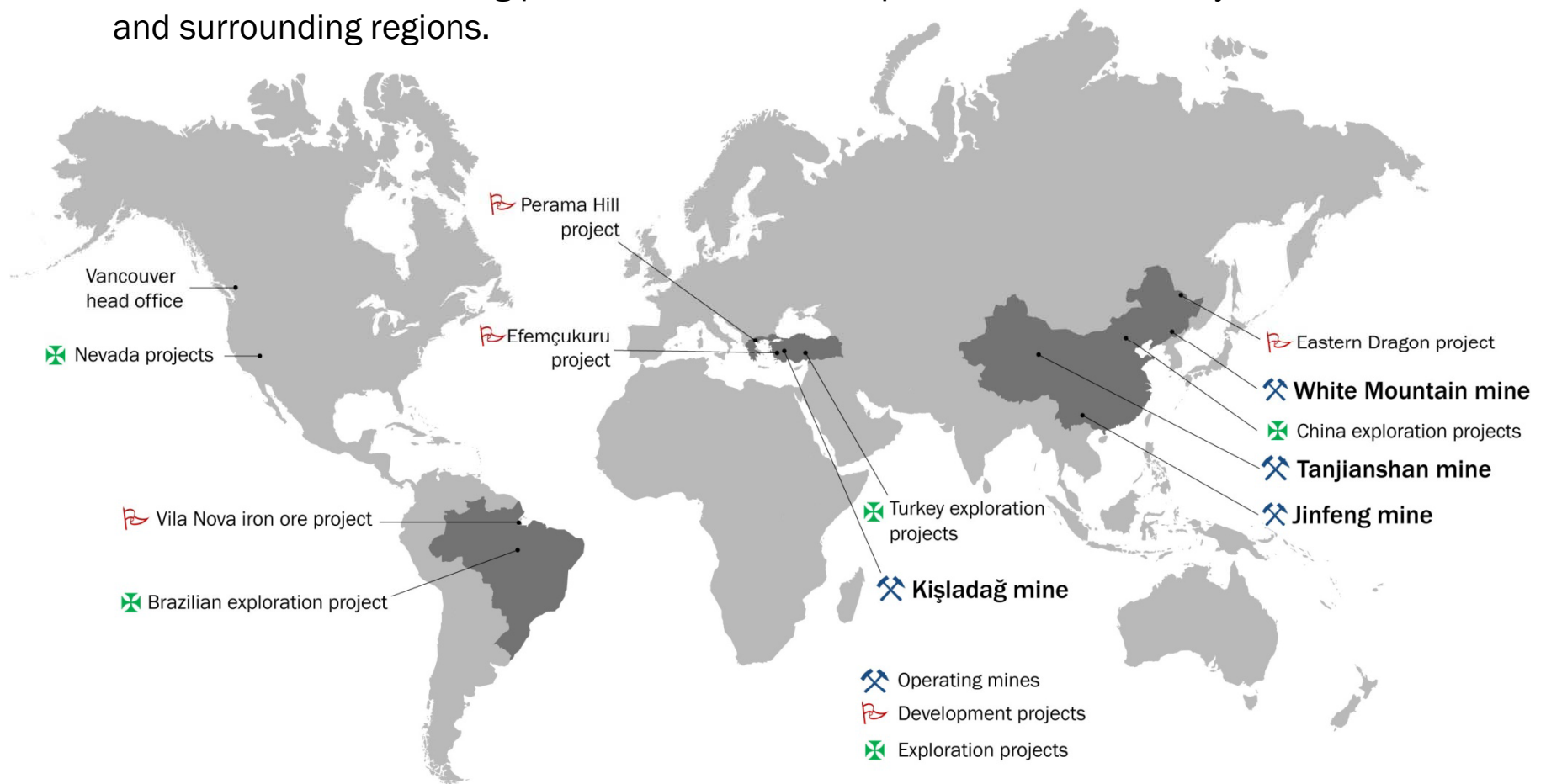
The terms "mineral resource", "measured mineral resource", "indicated mineral resource", "inferred mineral resource" used in the Company's disclosure are Canadian mining terms as defined in accordance with National Instrument 43-101 - Standards of Disclosure for Mineral Projects under the guidelines set out in the CIM Standards. Mineral resources which are not mineral reserves do not have demonstrated economic viability.

While the terms "mineral resource", "measured mineral resource", "indicated mineral resource", and "inferred mineral resource" are recognized and required by Canadian regulations, they are not defined terms under standards in the United States and normally are not permitted to be used in reports and registration statements filed with the SEC. As such, information contained in the Company's disclosure concerning descriptions of mineralization and resources under Canadian standards may not be comparable to similar information made public by U.S. companies in SEC filings. With respect to "indicated mineral resource" and "inferred mineral resource" there is a great amount of uncertainty as to their existence and a great uncertainty as to their economic and legal feasibility. It can not be assumed that all or any part of an "indicated mineral resource" or "inferred mineral resource" will ever be upgraded to a higher category. Investors are cautioned not to assume that any part or all of mineral deposits in these categories will ever be converted into reserves.

Where we operate



Eldorado Gold is a Canadian gold producer with 4 operating mines, 2 mines under construction, 1 late stage development project and an extensive exploration program with 125,000 meters of drilling planned for 2010. We operate in China, Turkey, Brazil, Greece and surrounding regions.



2009 Financial and Operating Highlights

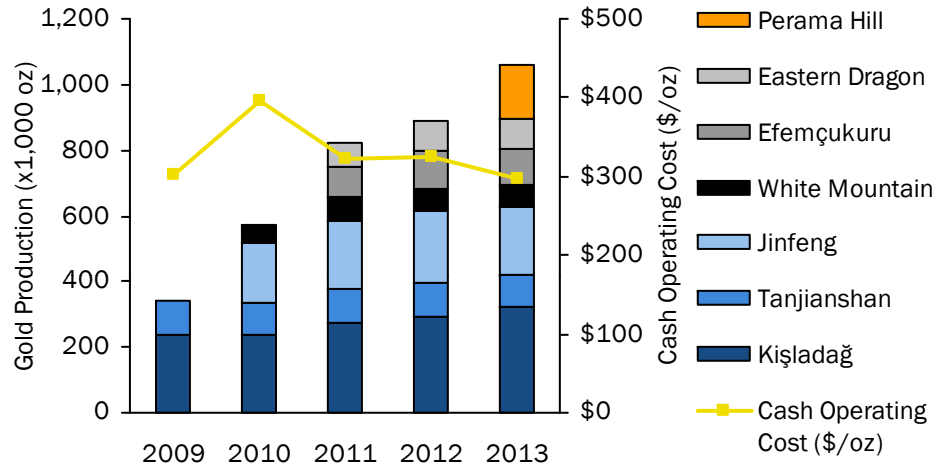


- Earnings of \$0.26 per share
- Cash flow of \$0.38 per share
- Gold sales increased by 29%
- Strong year-end balance sheet with \$315 M in cash
- Increased P+P reserves by approximately 95% to 15.1 M oz of gold
- Increased M+I resources to 21.3 M oz of gold
- Produced 363,509 ounces of gold at a cash operating cost of \$309 per ounce
- Completed acquisition of Sino Gold on December 15, 2009.

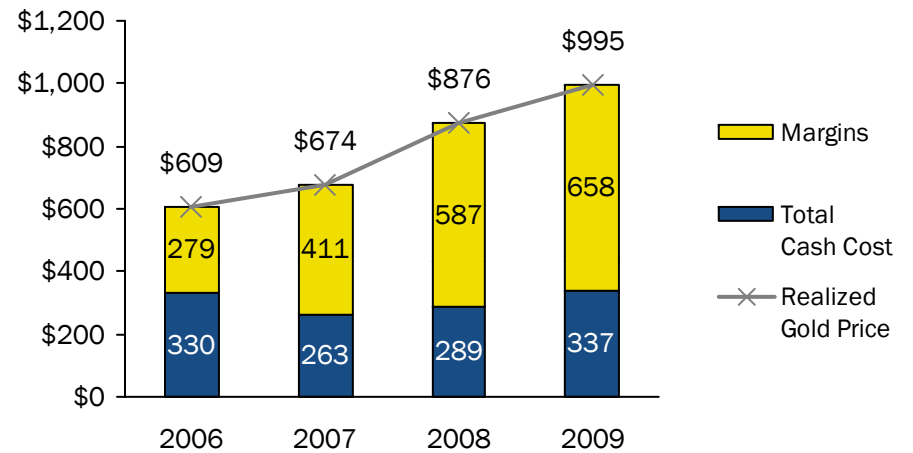
Lowest Quartile of Production Cost



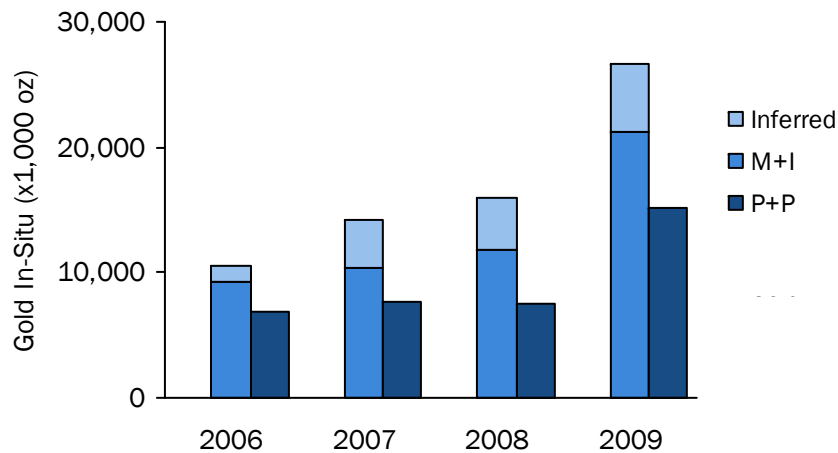
Forecast Annual Gold Production (in ounces)



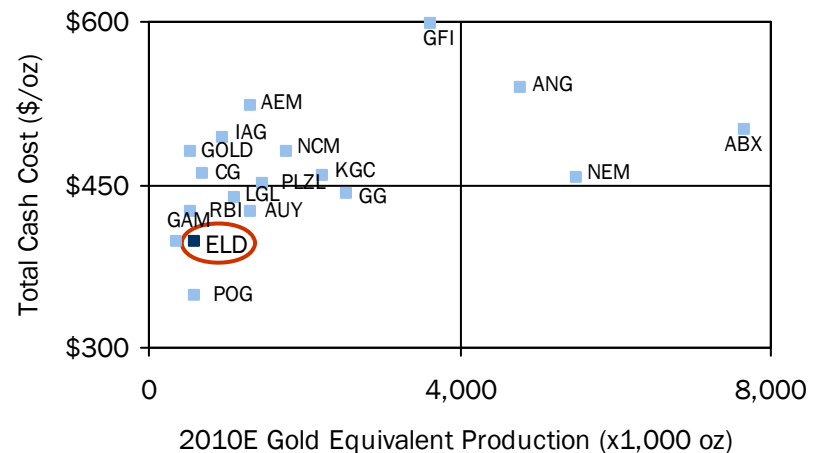
Expanding Margins (in \$/oz)



2009 Gold Resources and Reserves (in x1000 oz)



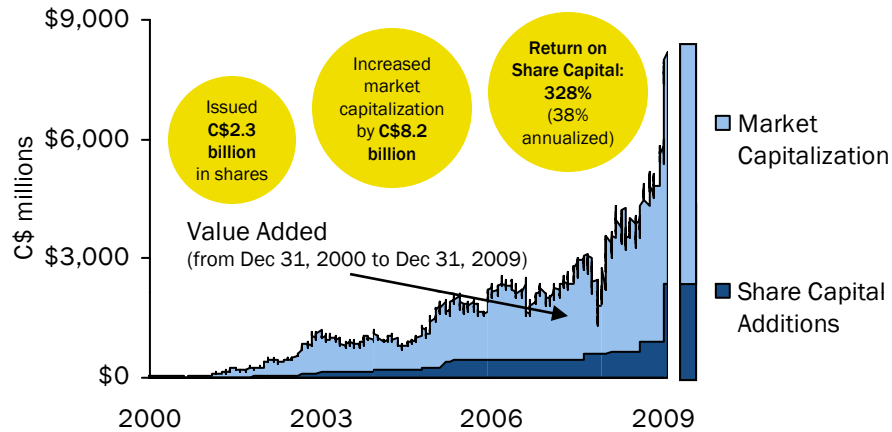
Lowest Quartile of Production Cost (in \$/oz)



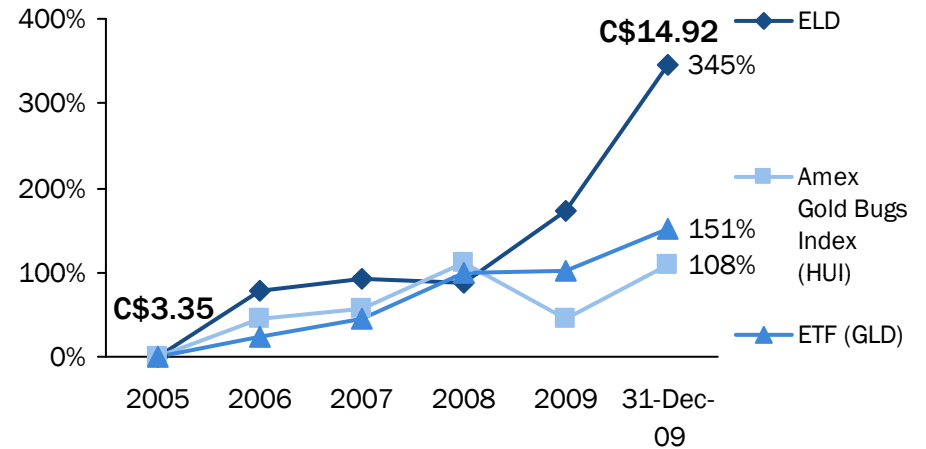
Superior Shareholder Performance



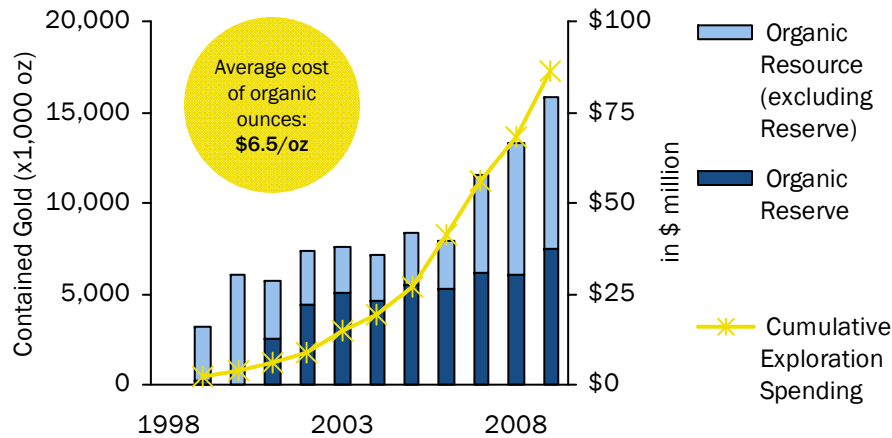
Return on Shareholders Equity



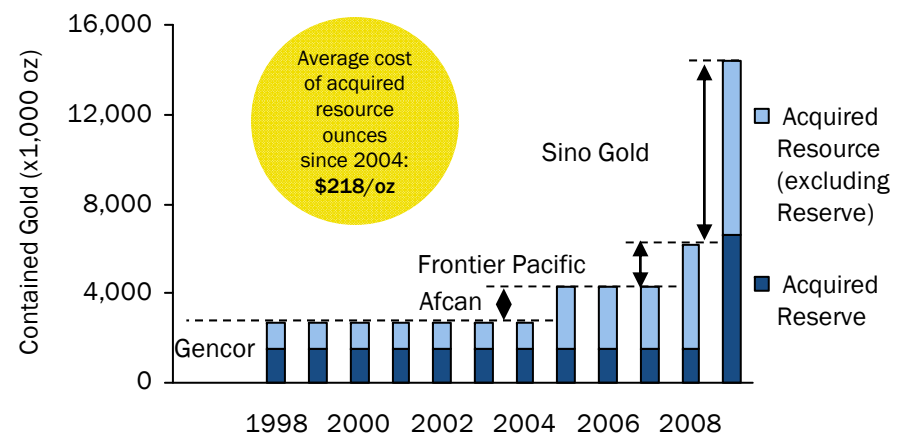
Share Price Performance



Organic Resource and Reserve Growth Since December 1998



Acquired Resource and Reserve Platform Since December 1998



Objectives



2010

- Production of 550,000 - 600,000 oz of gold from 4 mines at a cash operating cost of \$385 - \$400/oz
- Complete expansion plan at Kışladağ
- Complete construction of Efemçukuru and Eastern Dragon mines
- Submit EIA for Perama Hill mine project
- Execute a \$35 M exploration programme including 125,000 m of drilling
- Continue to grow and expand our high quality resource and reserve base.

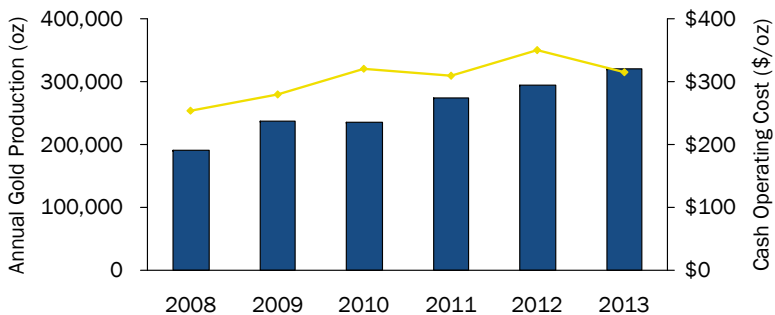
2011

- Production of 790,000 - 860,000 oz of gold from 6 mines at a cash operating cost of \$310 - \$325/oz
- Commence production from Efemçukuru and Eastern Dragon mines
- Initiate construction of the Perama Hill mine in the second half of 2011.

Kışladağ Mine, Turkey



Type	Open pit, heap leach gold mine
P+P reserves	6,816,000 oz of gold @ 0.94 g/t
M+I resources	10,273,000 oz of gold @ 0.78 g/t
Inferred resources	2,950,000 oz of gold @ 0.50 g/t



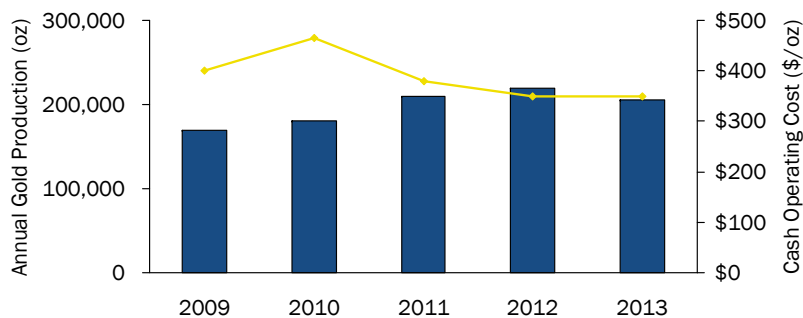
- Kışladağ is an open pit heap leach gold mine located in Uşak Province, Turkey that began commercial production in July 2006
- In 2010, ore production is planned to be 10MT/year at a 1.03 g/t with a strip ratio of 1.21:1
- P+P gold reserves increased by 23% to 6.8 M oz and M+I gold resources increased by 31% to 10.3 M oz since 2008
- Expansion plan budgeted \$40 M will result in increase production to 12 MT/year commencing in 2011
- On site exploration program in 2010 includes ~20,000 m of diamond drilling.

Jinfeng Mine, China



Type	Open pit and underground mine
P+P reserves*	3,232,000 oz of gold @ 5.20 g/t
M+I resources*	4,330,000 oz of gold @ 4.65 g/t
Inferred resources*	674,000 oz of gold @ 3.91 g/t

* Ore resources and reserves are calculated as at 31 December 2008 and presented in accordance with the JORC Code, which is equivalent under the corresponding categories of mineral reserves under NI 43-101 to CIM Standards.

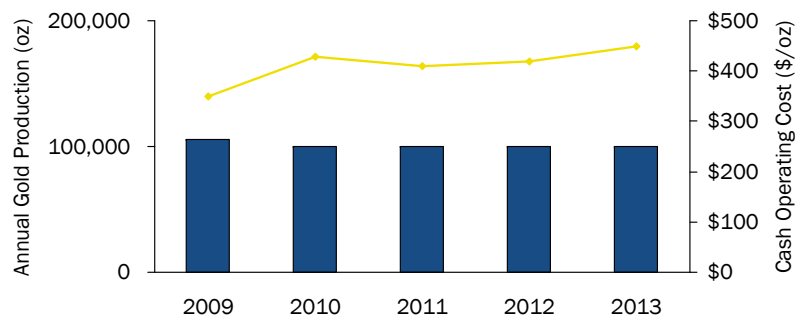


- Jinfeng is an open pit and underground gold mine located in Guizhou Province, China that began commercial production in September 2007
- Eldorado owns an 82% interest with local joint-venture partner Guizhou Lannigou Gold Mine Limited holding the remaining 18%
- In 2010, ore production is planned to be 1.5 MT (1.1 MT from the open pit and 0.4 MT from the underground mine) at 4.96 g/t Au
- Strip ratio in the pit is expected to be 17.8:1 in 2010, dropping to 5.8:1 in 2011
- Ore production from the underground mine will increase to 0.6 MT in 2011
- Management is reviewing the mining operations to determine the optimum pit depth and underground mining methods
- Regional exploration program in 2010 includes ~13,600 m of diamond drilling.

Tanjianshan Mine, China



Type	Open pit, float-roast-CIL
P+P reserves	710,000 oz of gold @ 3.59 g/t
M+I resources	916,000 oz of gold @ 3.07 g/t
Inferred resources	349,000 oz of gold @ 3.54 g/t



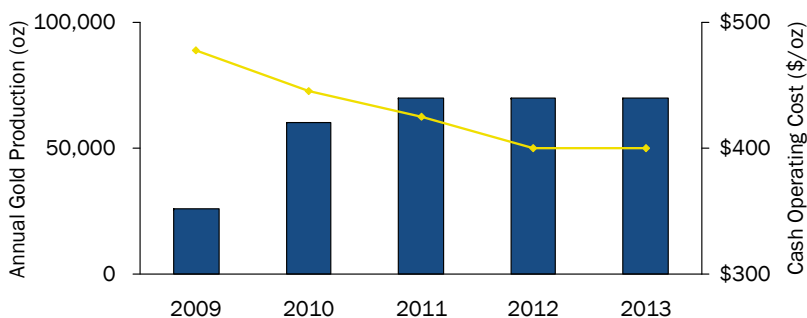
- Tanjianshan (TJS) is an open pit, float-roast-CIL operation located in Qinghai Province, China that began commercial production in February 2007
- TJS consists of two pits: QLT and JLG
- Partners in TJS are Qinghai Number One Geological Brigade (5%) and the Dachaidan Gold Mine (5%)
- Sulphide circuit commissioning was completed in Q2 2009
- In 2010 Tanjianshan plans to process 1MT at an average grade of 3.85 g/t Au. Mining will continue from the JLG pit at a strip ratio of 2.5:1
- Capital spending of \$15 M in 2010
- Drilling will continue in 2010 with ~14,400 m of diamond drilling on the 323 zone, QLT deeps and other anomalies. Initial 323 zone resource estimate to be released in Q2 2010.

White Mountain Mine, China



Type	Underground mine, CIL plant
P+P reserves*	790,000 oz of gold @ 3.70 g/t
M+I resources*	1,079,000 oz of gold @ 3.10 g/t
Inferred resources*	109,000 oz of gold @ 2.10 g/t

* Ore resources and reserves are calculated as at 31 December 2008 and presented in accordance with the JORC Code, which is equivalent under the corresponding categories of mineral reserves under NI 43-101 to CIM Standards.



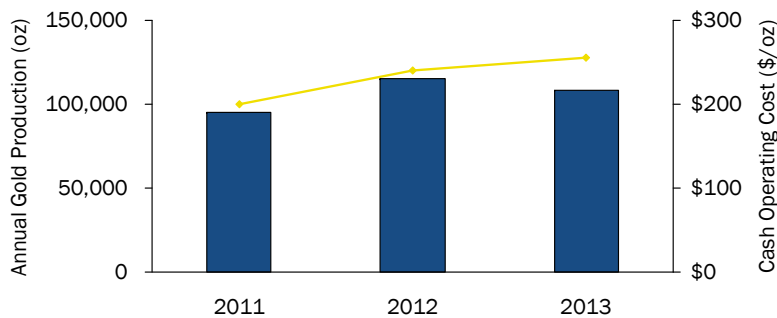
- White Mountain is an underground mine using a sub-level and cut-and-fill stoping mining method located in Jilin Province, China that commenced commercial production in January 2009
- Eldorado owns a 95% interest with joint-venture partner Jilin Tonghua Institute of Geology and Minerals Exploration and Development owning the remaining 5%
- White Mountain will process 600,000 T of ore at a grade of 4.0 g/t Au
- Management is reviewing options to increase underground production to utilize excess capacity in the mill
- Exploration program in 2010 includes ~10,500 m of diamond drilling.

Efemçukuru Project, Turkey



- Efemçukuru is a high grade epithermal gold deposit, suited for underground mechanized mining, located in Izmir Province, Turkey
- Feasibility study was completed in 2007 with operating and capital estimates updated in October 2009
- Construction ongoing with commissioning and production planned for 2011
- Ore body is open down dip and along strike
- Exploration will continue on parallel veins within the epithermal system, including the Kokarpinar vein to the south and the northerly extension of the main ore zone
- Efemçukuru's 2010 exploration program includes ~5,000 meters of diamond drilling.

Type	Underground mine under construction
P+P reserves	1,506,000 oz of gold @ 9.10 g/t
M+I resources	1,700,000 oz of gold @ 9.55 g/t
Inferred resources	352,000 oz of gold @ 6.43 g/t
Capex	\$152 million

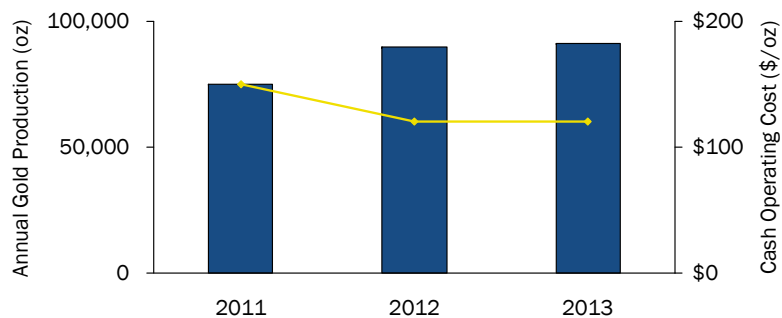


Eastern Dragon Project, China



- Eastern Dragon is a high-grade, low-sulphidation, epithermal, gold-silver vein deposit located in Heilongjiang Province, China
- Eldorado has a 95% equity interest with a private joint venture partner holding 5%
- The Environmental Impact Assessment (EIA) report was approved in August 2009
- Resources and reserves were updated in March 2010. P+P increased 42% to 747,000 oz Au and M+I increased 47% to 852,000 oz Au
- Production is expected to begin in 2011
- Drilling will continue in 2010 with ~10,000 m of diamond drilling on site.

Type	Open pit and underground, CIL plant under construction	
	Gold	Silver
P+P reserves	747,000 oz @ 8.42 g/t	6,552,000 oz @ 74 g/t
M+I resources	852,000 oz @ 7.50 g/t	8,300,000 oz @ 73 g/t
Inferred resources	190,000 oz @ 2.67 g/t	1,500,000 oz @ 20 g/t



Perama Hill Project, Greece



Type	Open pit
P+P reserves	966,000 oz of gold @ 3.20 g/t
M+I resources	1,363,000 oz of gold @ 3.62 g/t
Inferred resources	552,000 oz of gold @ 1.96 g/t
Project operating parameters	
Strip ratio	0.35:1
Estimated metallurgical recovery	90%
Construction anticipated to commence	2011
Construction Capital	\$159 M
Average cash operating cost	\$278/oz
Average annual production	110,000 oz of gold

- Perama Hill is a shallow, high sulphidation, non-refractory oxide gold deposit with a low strip ratio
- Pre-Environmental Impact Assessment (PEIA) has been submitted in October 2009
- Environmental Impact Assessment (EIA) to be submitted in the second half of 2010
- Environmental Terms of Reference approval anticipated in Q2 2011
- During 2010 we will concentrate on permitting activities prior to planned construction
- Management views recent political and economic developments in Greece as positive for the permitting and timely development of the project.

Strategy

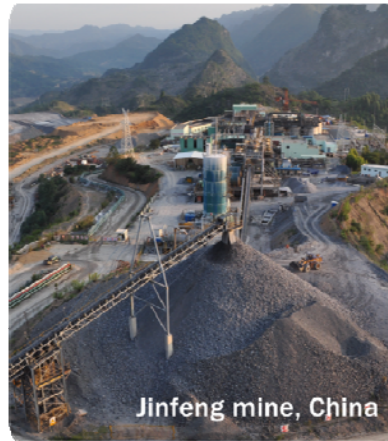


- Long life, low cost assets
- Lowest quartile of production cost
- Strong balance sheet
- No hedge positions
- Regional exploration with excellent development projects for internal growth
- Explore, develop and operate to high standards

Thank you



Kışladağ mine, Turkey



Jinfeng mine, China



Tanjianshan mine, China



White Mountain mine, China

Eldorado Gold Corporation

TSX: ELD NYSE: EGO ASX: EAU

Shares Outstanding (as of December 31, 2009): 537.1 M

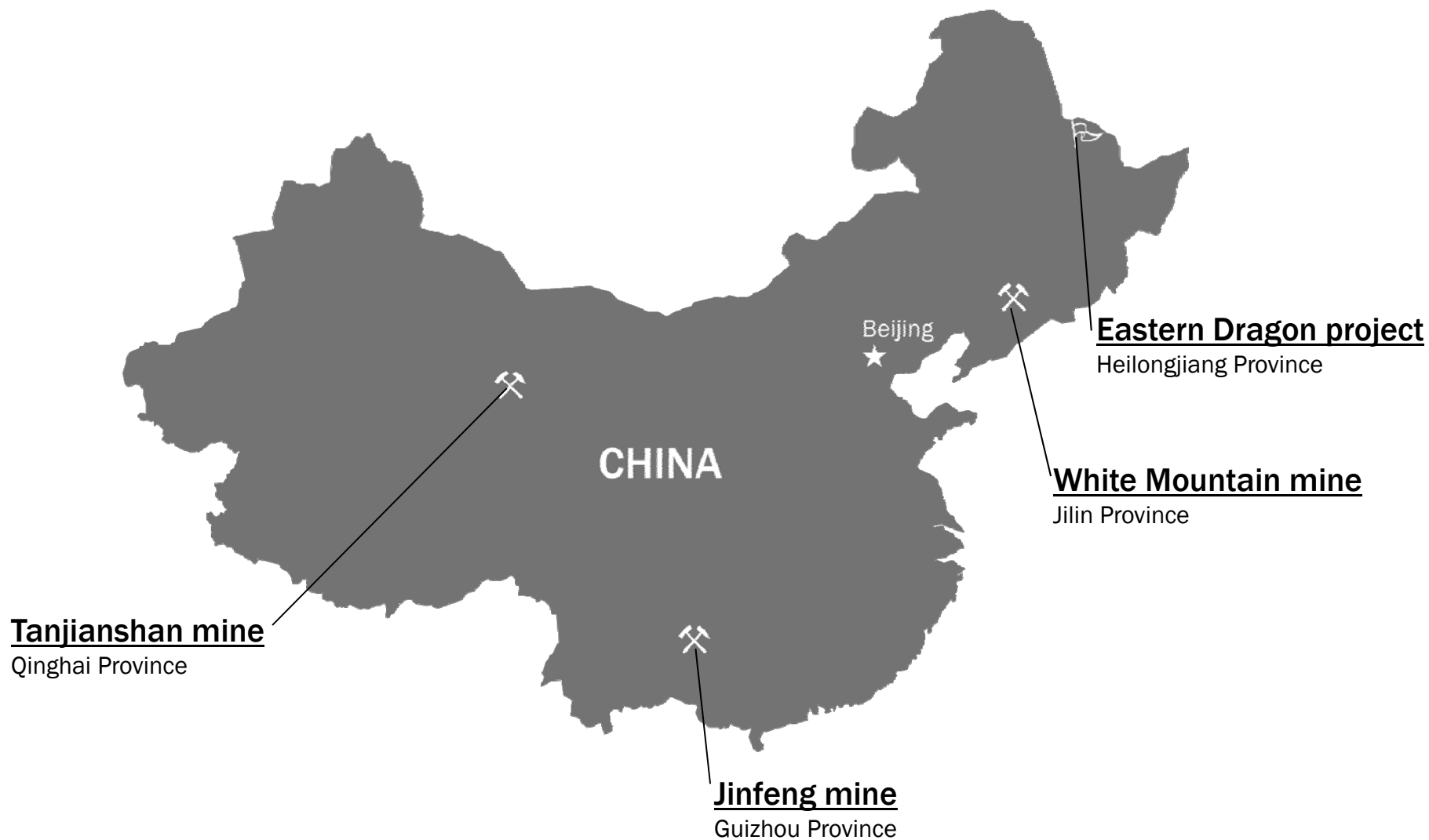
Investor Relations:

Nancy Woo

(604) 601-6650

nancyw@eldoradogold.com

Appendix I: China Operations



China - Facts and Fallacies



Fallacy

The refining and selling of gold is tightly controlled and the producer receives a discount to the spot price.

If a dispute arises with your Chinese partner there is no recourse or legal security.

The percentage of foreign ownership is restricted to less than 50%.

Fact

There is a choice of refineries (including Metalor) and the producer is free to negotiate with the preferred refinery. Terms and conditions are similar to those outside China. Refined gold is sold onto the Shanghai Gold Exchange at prices based the London Fix. (no discount).

There is a legal framework in China under which disputes can be handled. Arbitration is also available, and is usually spelled out in the joint venture contract. This arbitration is commonly conducted outside of China – for example in the Tanjianshan JV contract it specifies that arbitration would take place in Singapore.

The only restriction is the requirement to set up a joint venture with a Chinese partner. The foreign partner has the ability to control +95% of the joint venture.

China - Facts and Fallacies



Fallacy

Gold mining is in the “prohibited” category, and the size of deposit available to foreign companies is limited.

China can't be a good place to work – there aren't any majors there.

Foreign companies are only able to develop low grade, refractory deposits.

Fact

The Foreign Investment Catalogue places investment in the gold sector in the “restricted” category. The restricted category simply means that there are no tax incentives and the government is more cautious about the company investing. There is no official limitation on the size of the deposit available to foreign companies – for example Jinfeng has a 4.3 million oz resource.

The perceived lack of mega-sized deposits is due more to the historical system of Chinese exploration (low tech) than to actual geologic constraints. In addition, for companies that simply want to “buy assets” they will be at a disadvantage due to the competition from Chinese companies.

At Tanjianshan the QLT open pit graded over 6 g/t of non-refractory ore. The Eastern Dragon deposit has an M+I resource grade of 8.3 g/t. **The low grade and refractory criteria for foreign investment no longer applies.**

“The Big 4” Government Agencies



- National Development and Reform Commission (NDRC)
 - The main agency that directs the “planned economy”
 - Mainly responsible for the Foreign Investment Catalogue
 - Approves the final Chinese Feasibility Study for gold mining operations
- Ministry of Land and Resources (MOLAR)
 - Grants the Exploration License (EL) and Mining License (ML) and handles renewals
 - Responsible for administering the Resource Compensation Fee
 - Principally responsible for drafting the mining law
- Ministry of Industry and Information Technology (MIIT)
 - A new agency, now responsible for issuing the Gold Certificate (the final official seal of approval for gold producers)
 - Responsible for administration and policies affecting the gold mining industry
- Ministry of Commerce (MOFCOM)
 - Approves the setup of the Sino-Foreign joint venture
 - Monitors the development of the investment catalogue and mining law to ensure compliance with WTO standards

Typical Flow Chart for Mine Permitting of a Sino-Foreign JV



- Assume an existing Exploration License (EL) with drilled resources



History in China



- 2003** Signed an agreement with the China National Gold Group Corporation (“CNGC”) for the exclusive right to review their portfolio of operating mines, development projects and exploration projects for a period of 5 months that was later expanded to include joint reviews of other identified opportunities in China external to CNGC.
- 2005** Acquired Afcan Mining Corporation and the Tanjianshan gold project.
- 2007** Commenced commercial production at Tanjianshan mine.
- 2009** Successfully completed sulphide circuit and roaster commission at Tanjianshan mine.
Discovered a new zone of gold mineralization at Tanjianshan.
Acquired Sino Gold and the Jinfeng gold mine, White Mountain gold mine and Eastern Dragon gold-silver project.

Appendix II: 2010 Exploration Overview



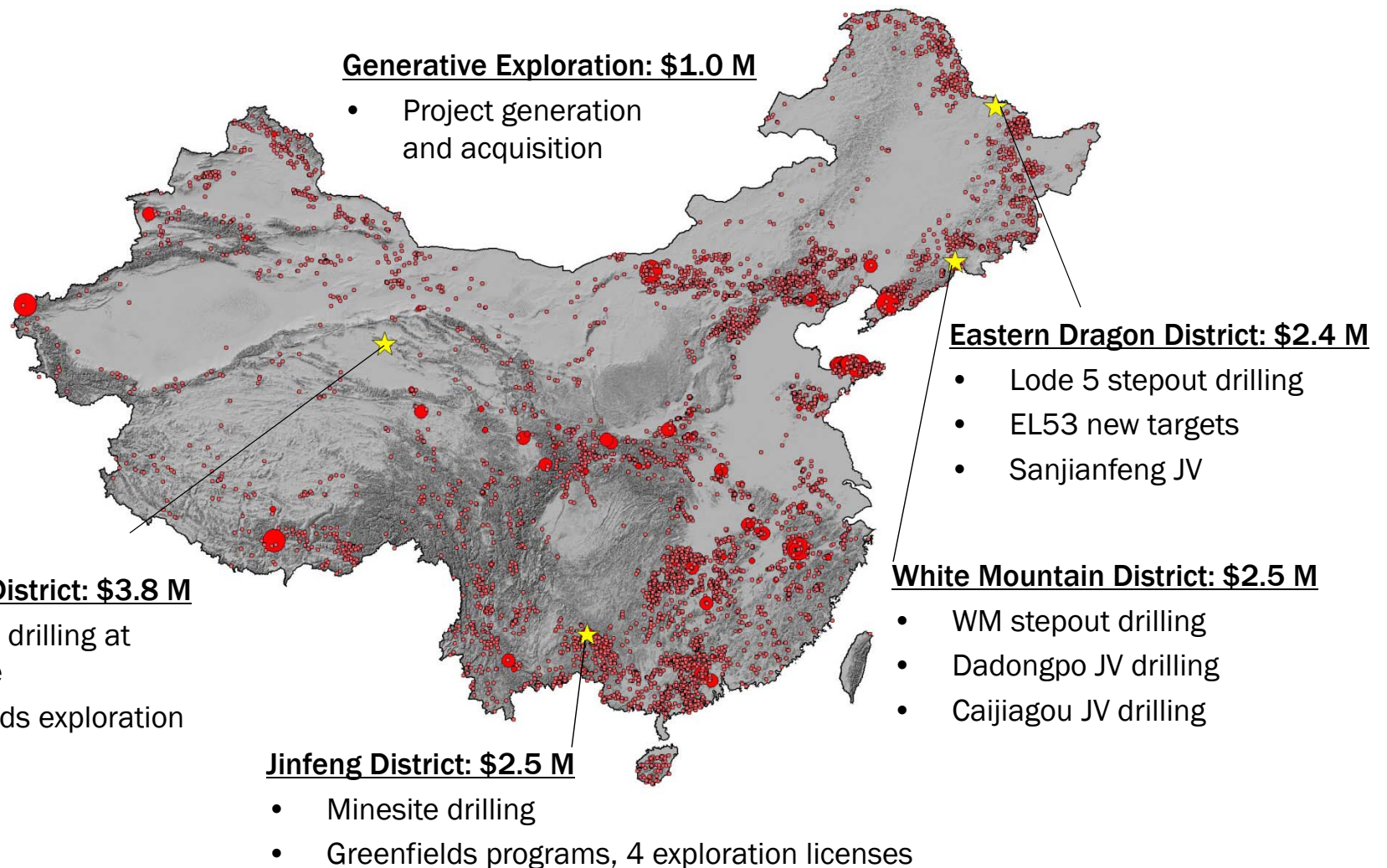
- 2010 exploration budget of \$35.4 M
- *Drill to discover:* 125,000 metres drilling planned on >20 properties
- Blend of minesite, advanced stage, early stage, and generative exploration programs for long-term organic growth
- Commitment to building strong regional exploration teams

Reserve Growth Strategy

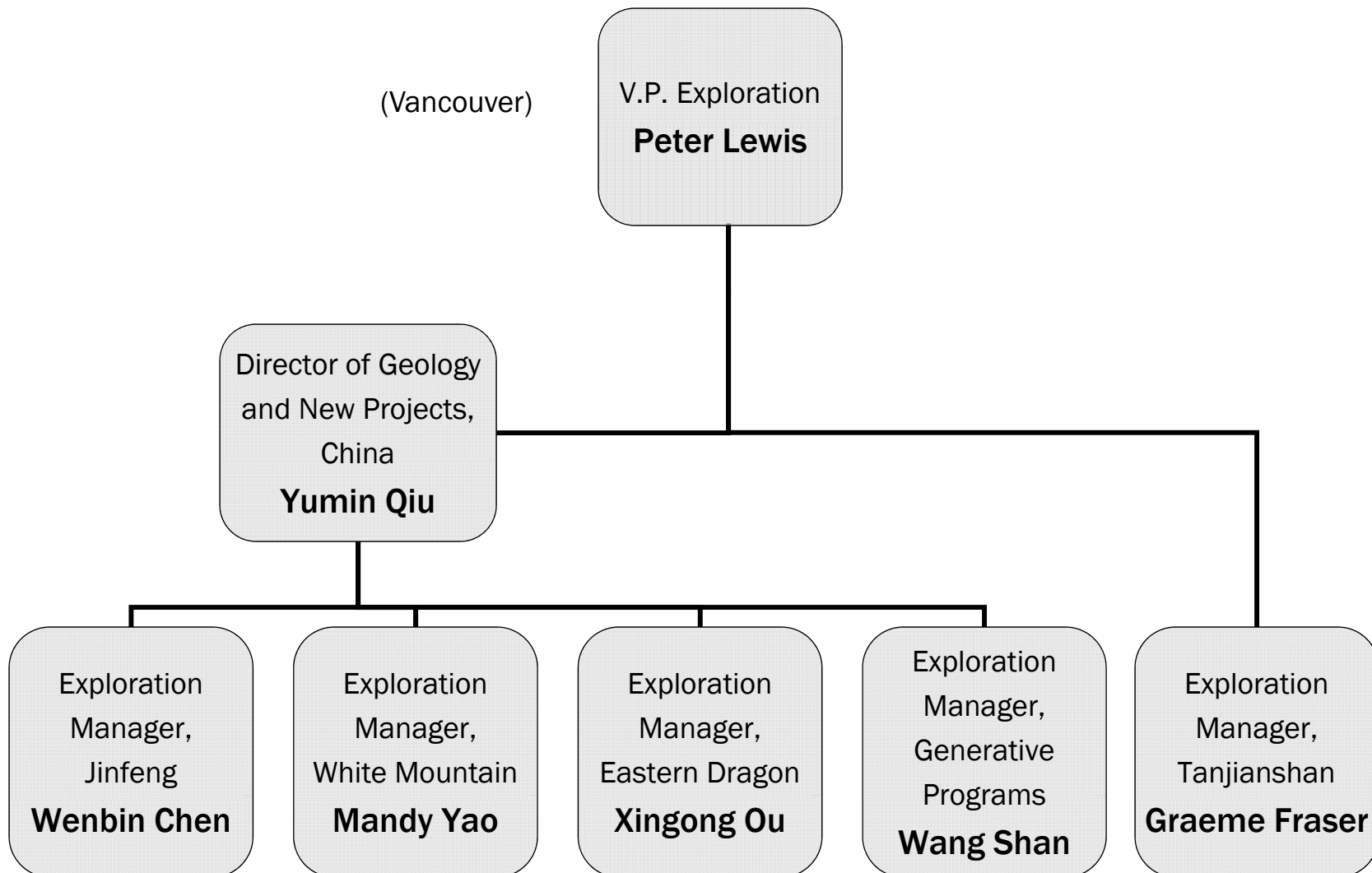


1. Generative initiatives:
 - Property identification and acquisition
 - China
 - Turkey
 - Brazil
 - New business opportunities
2. Early stage exploration projects:
 - Target definition and testing
 - China, Turkey, Nevada, Brazil
 - Drilling planned on >16 projects in 2010
3. Resource delineation projects:
 - Advanced exploration and minesite
 - China, Turkey
 - Drilling planned on 7 projects in 2010
4. Selected Accretive Acquisitions:
 - Afcan Mining
 - Frontier Pacific

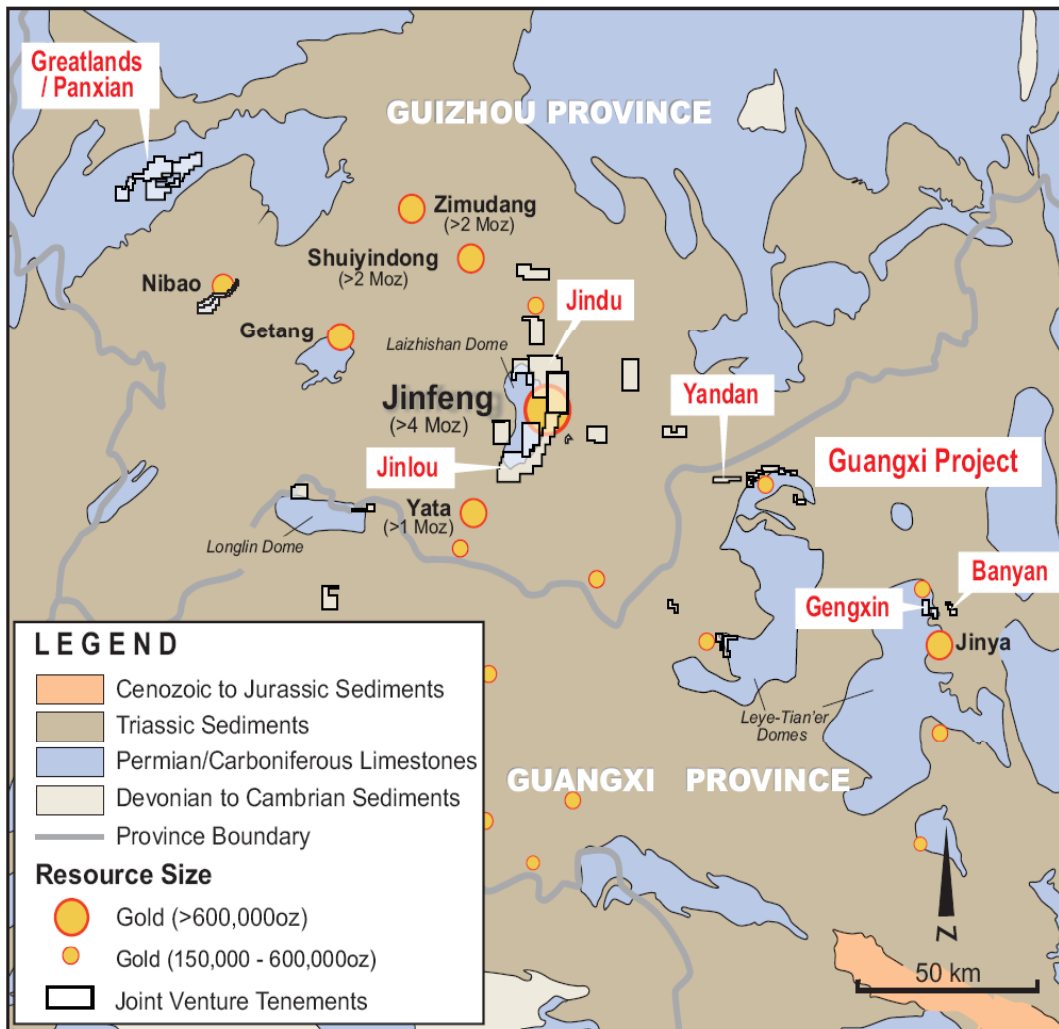
China Exploration Budget



China Exploration Organization

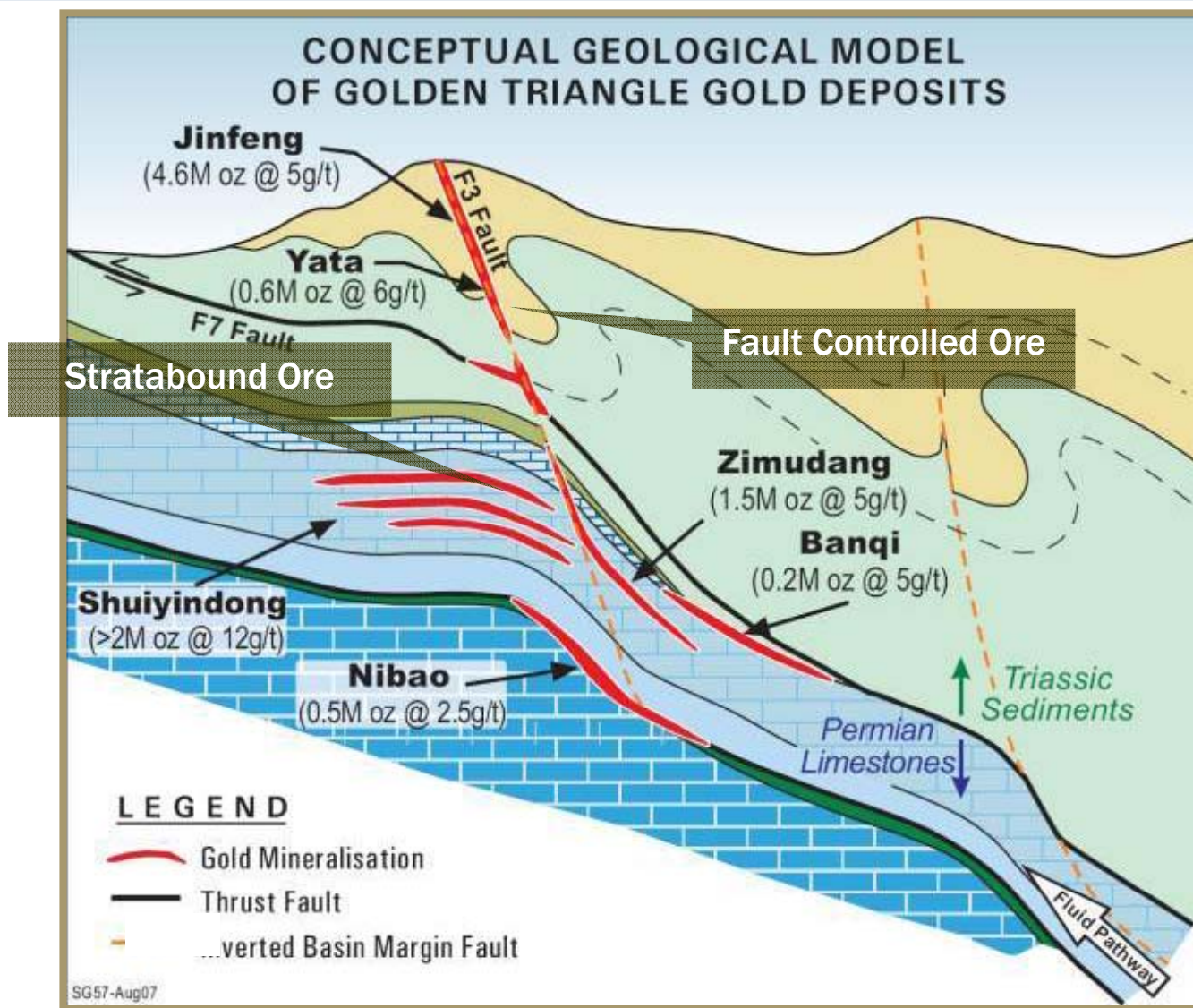


Jinfeng District

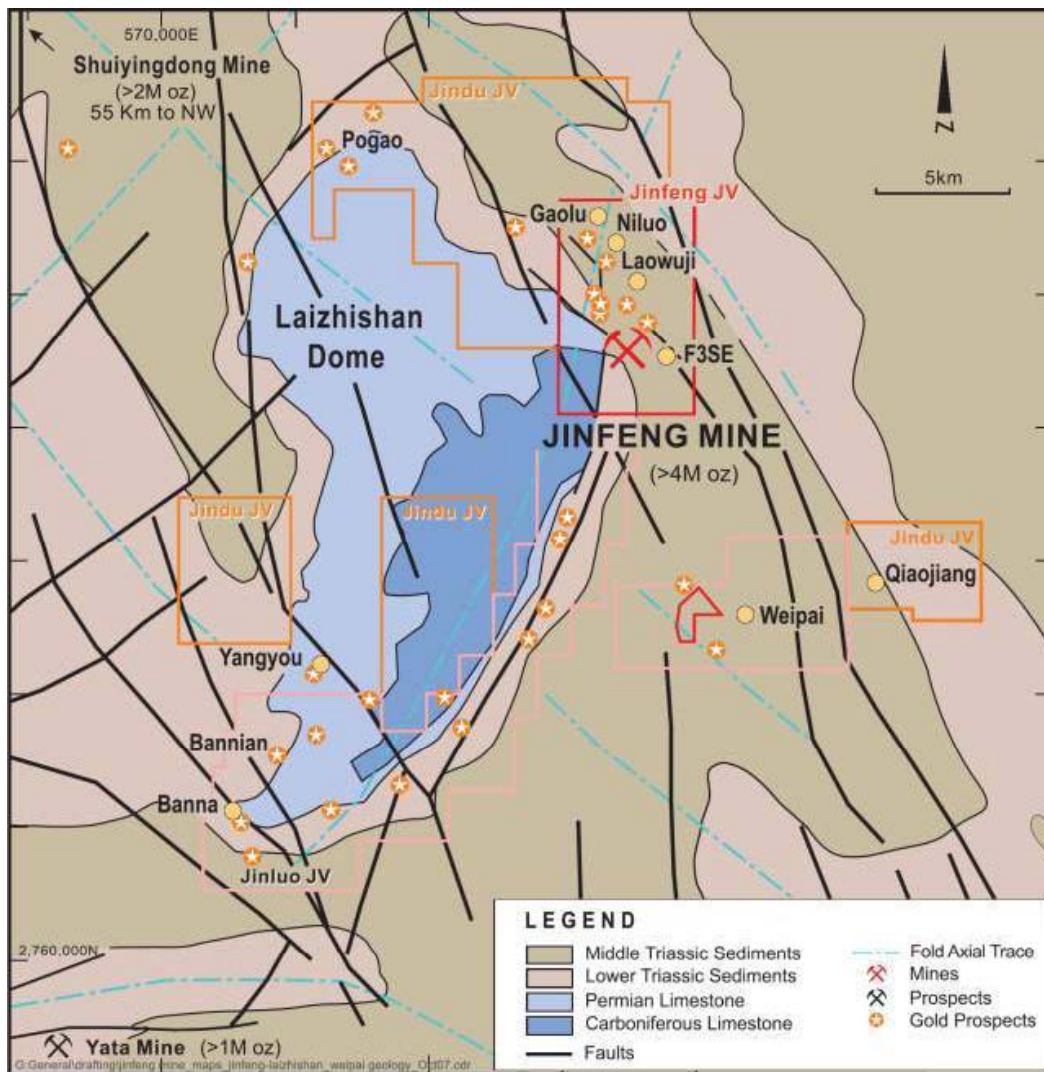


- Sediment-hosted, Carlin style gold deposits
- Active multi-million ounce mines (Jinfeng, Zimudang, Shuiyindong, Yata)
- Potential for high grades
 - Shuiyindong ~ 16 gm/t

Jinfeng Deposit Model

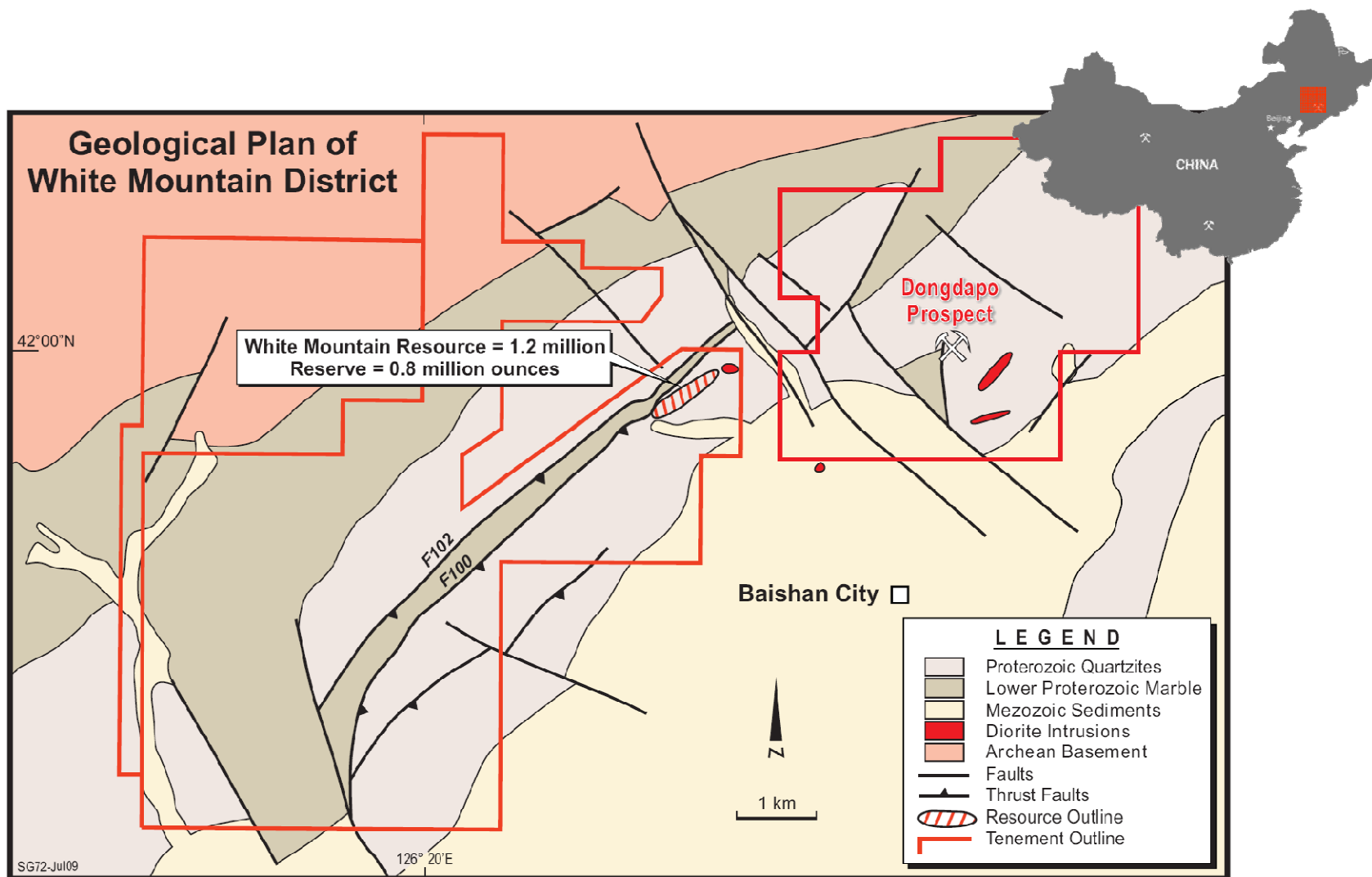


Jinfeng District



- Jinfeng District Exploration 2010 Budget: \$2.5 M
- Jinfeng JV
 - 3 exploration licenses, 1 mining license
 - Drill-testing numerous structurally controlled, high grade targets (2.25m @ 19.24 gm/t in trenches)
- Jindu JV
 - 3 exploration licenses (53 km²)
 - Drill testing targets along margin of Laizhishan Dome
- Jinluo JV
 - 1 exploration license (95 km²)
 - Drill testing fault targets along margin of Laizhishan Dome

White Mountain District

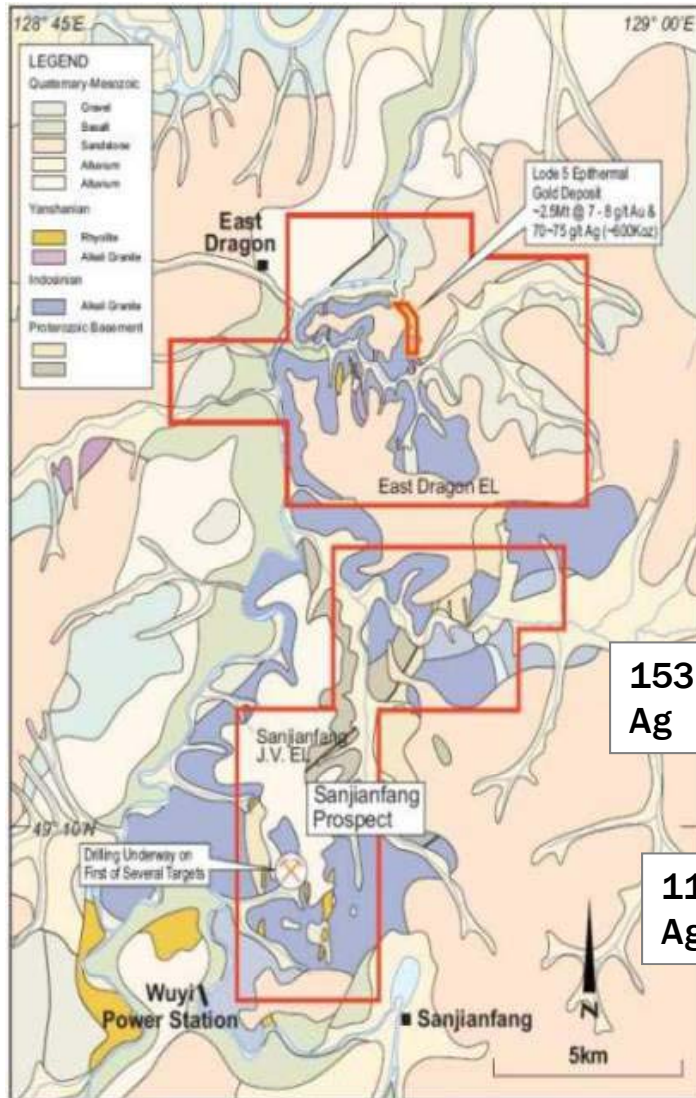


White Mountain District



- White Mountain District Exploration 2010 Budget: \$2.5M
- White Mountain Minesite Exploration
 - Infill and stepout drilling: deposit remains open down-dip and along strike to northeast
- Dadongpo Exploration License (29 km²)
 - Target definition: geophysical, geological programs
 - Drill testing new targets: same faults, stratigraphic sequence as White Mountain
 - Historical results include 5.9m @ 4.1 g/t Au from exploration adit
- Xiaoshiren Exploration License (26 km²)
 - 15 km SE of White mountain in similar stratigraphic, structural setting
 - Target definition: geophysical, geological programs
 - Drill testing new targets
 - Historical results include trench with 3.1m @ 8.4 g/t Au.
- Caijiagou Exploration License (Liaoning Province, 350 km west of WM)
 - Target definition, drilling of shear zone prospect

Eastern Dragon District



- Eastern Dragon District Exploration 2010 Budget: \$2.4 M
- 2 exploration licenses (~100 km²)
- Numerous high grade, epithermal Au+Ag veins with very little previous exploration
- Ore grades common in surface trenches



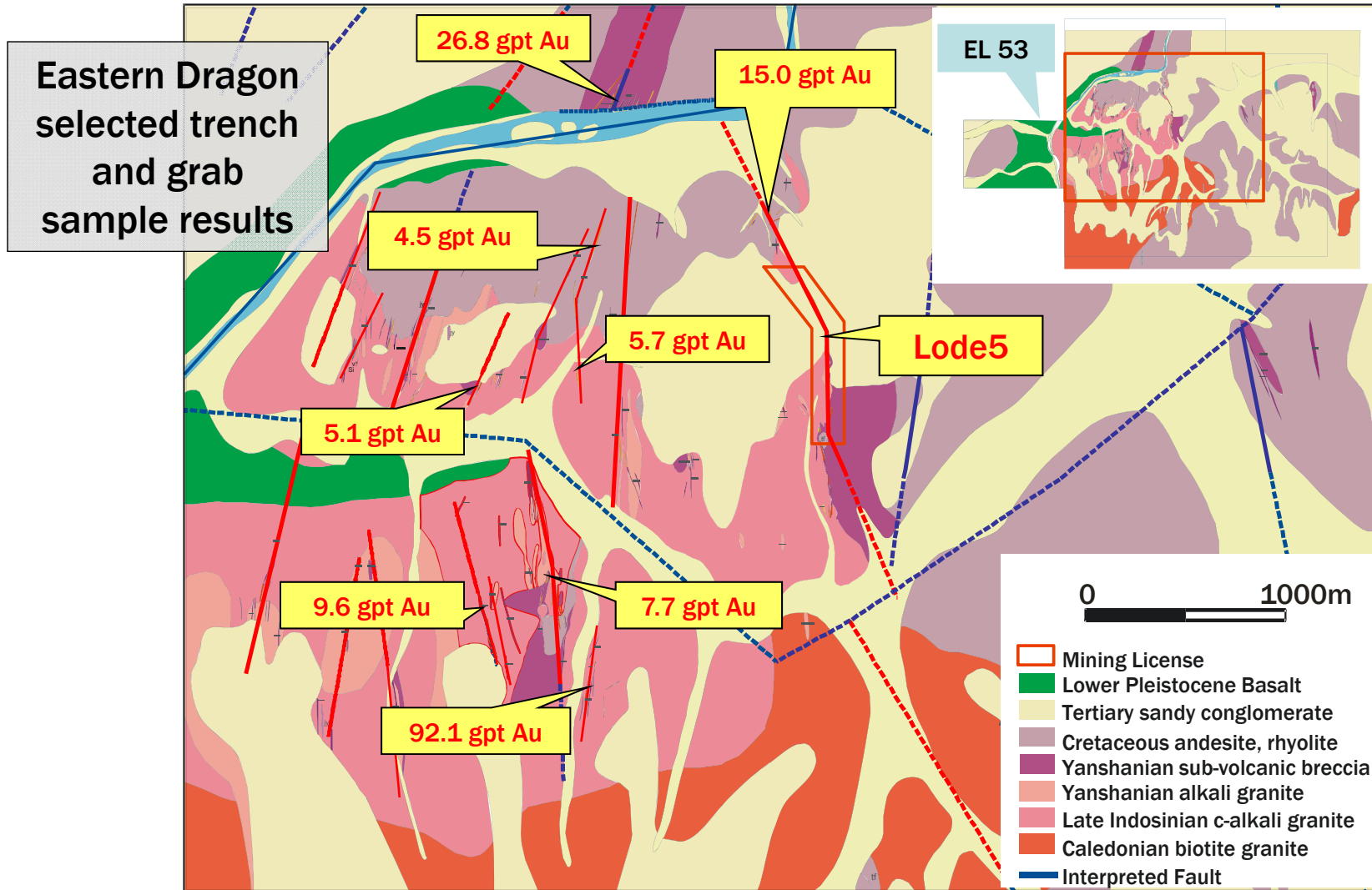
153.5g/t Au / 1340 g/t Ag



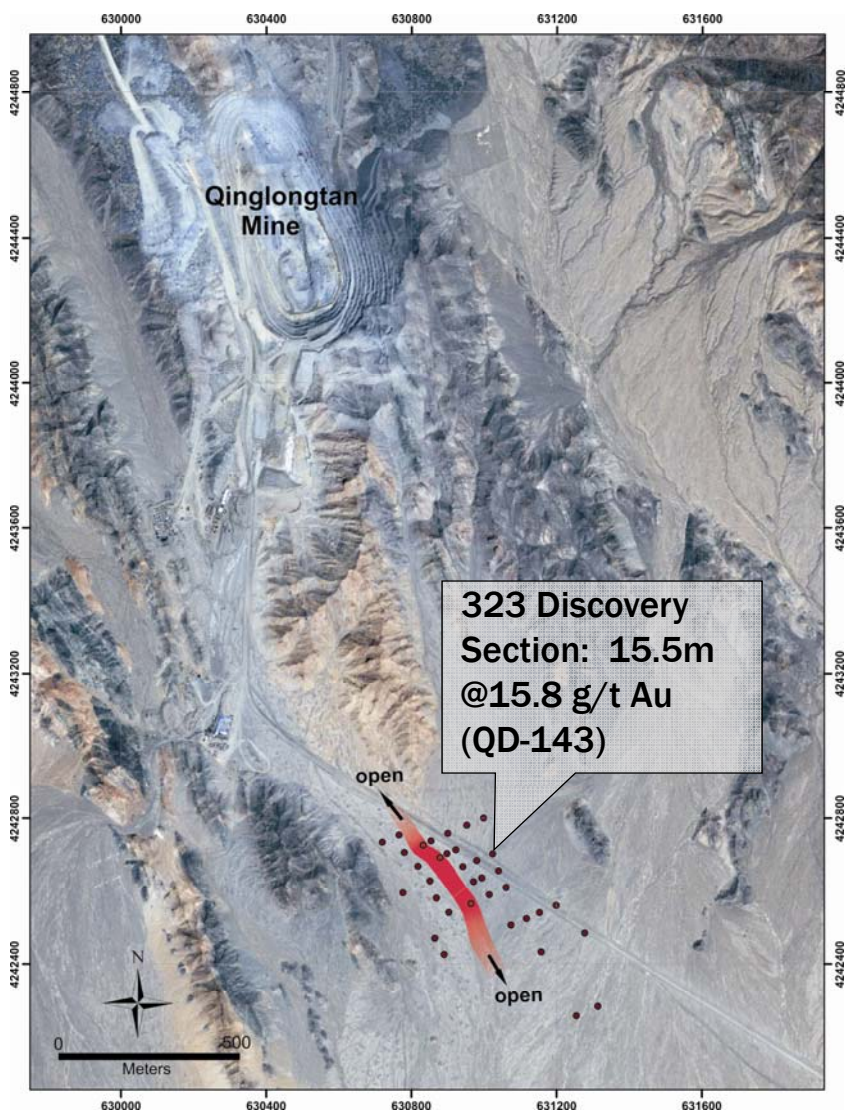
119.0g/t Au / 743 g/t Ag



Eastern Dragon Exploration



Tanjianshan District

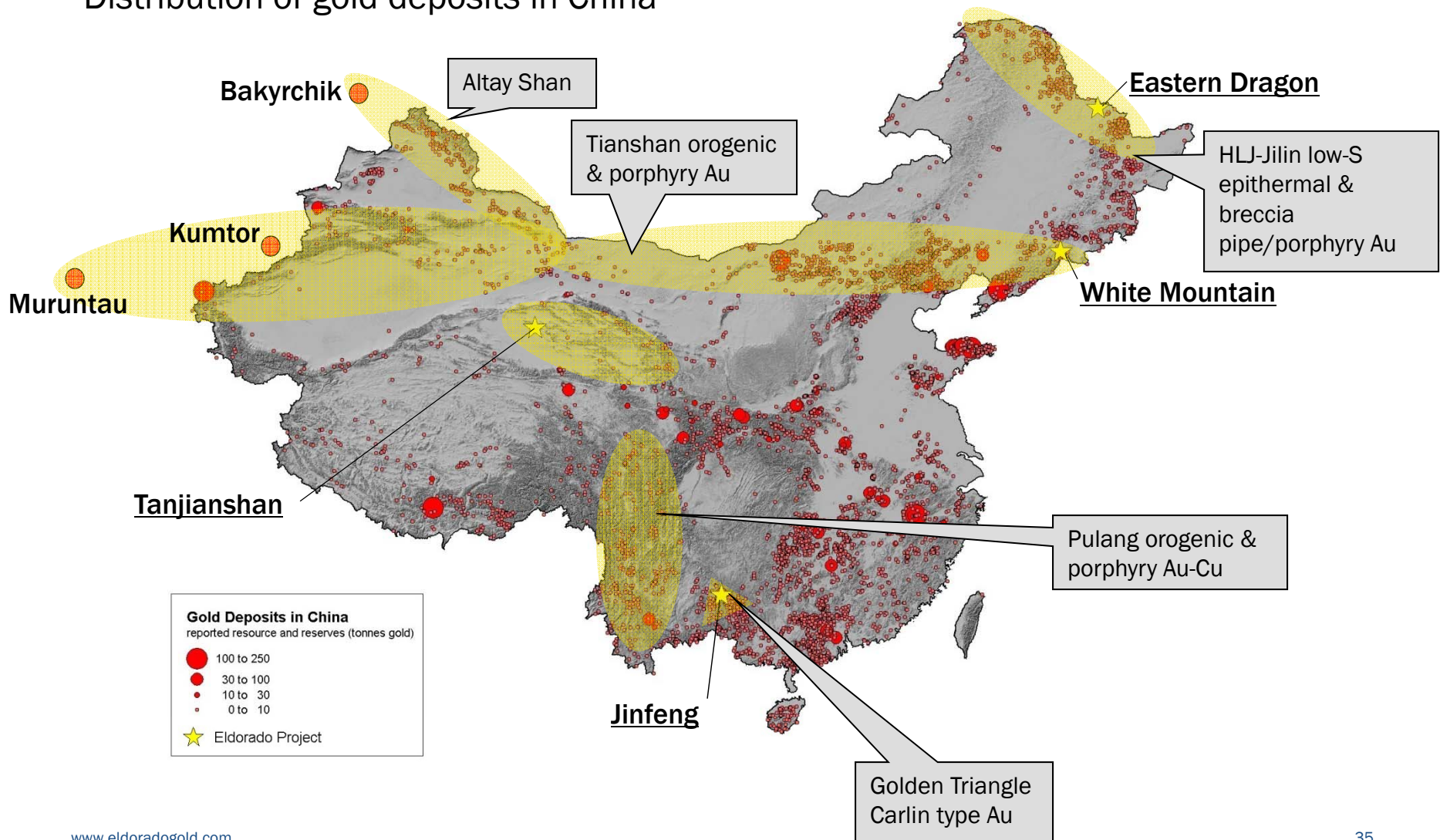


- Tanjianshan District Exploration 2010 Budget: \$3.8M
- 323 zone resource definition drilling
- QLT deeps resource definition drilling
- Target generation programs:
 - Mapping
 - RAB drilling programs

China Generative Exploration



Distribution of gold deposits in China



Turkey Exploration Budget



Generative Exploration: \$1.7 M

- Project generation and acquisition

Kışladağ: \$4 M

- Resource expansion drilling

AS porphyry target: \$0.9 M

- Geophysical surveys
- Drilling

Efemçukuru: \$1.5 M

- Stepout, new vein targets drilling

Sayaçık porphyry target: \$0.8 M

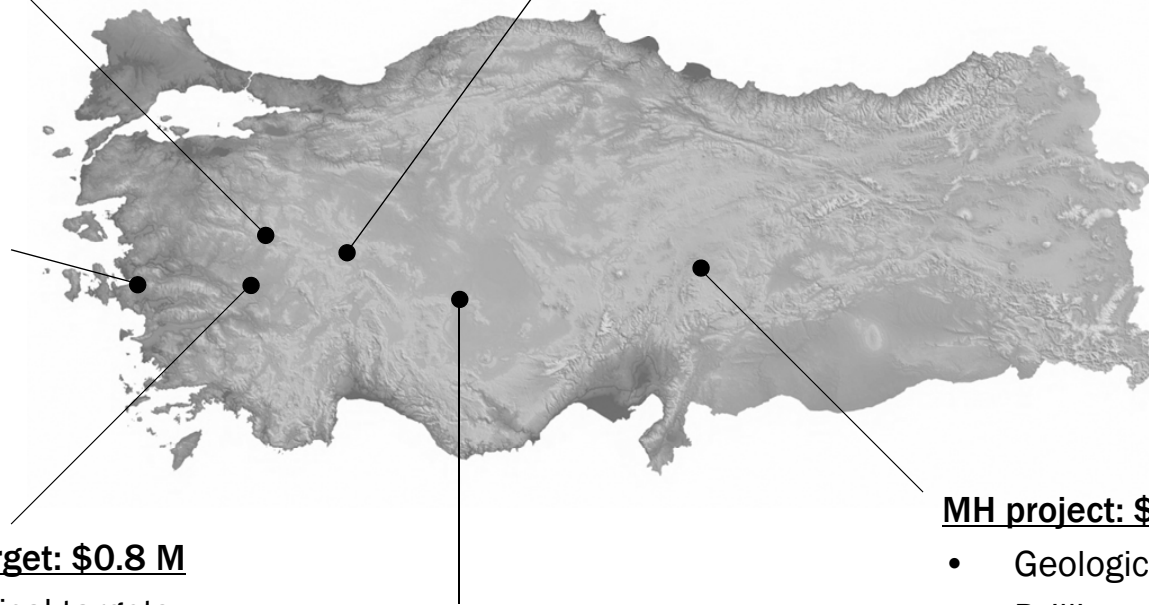
- Drilling geophysical targets

Konya-Sizma prospect: \$0.4 M

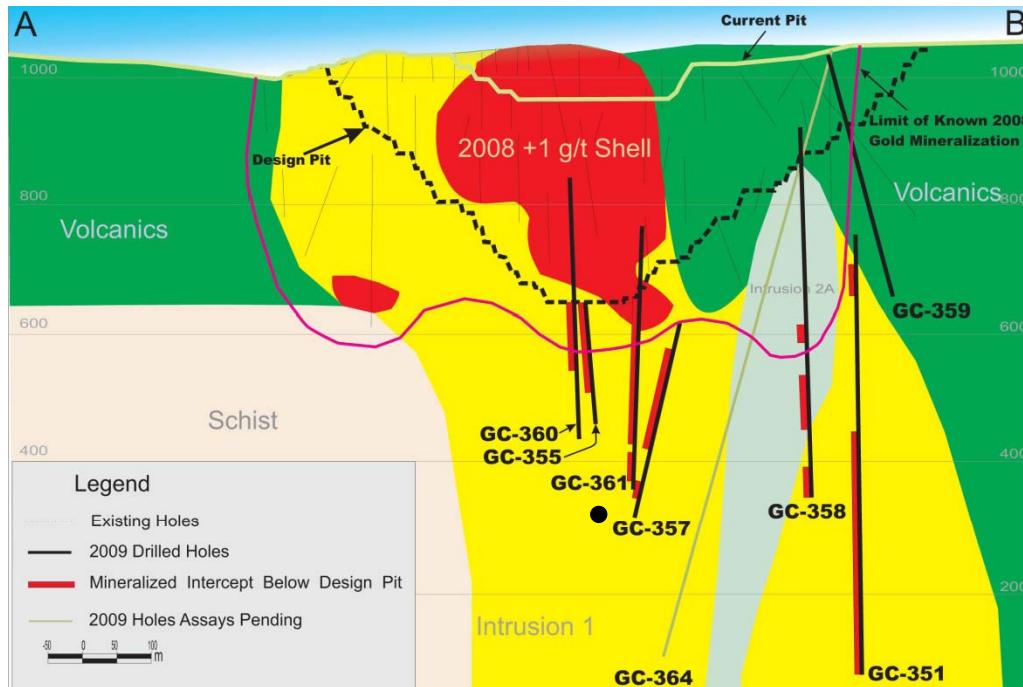
- Drill testing geochemical anomalies

MH project: \$2.0 M

- Geological programs
- Drilling

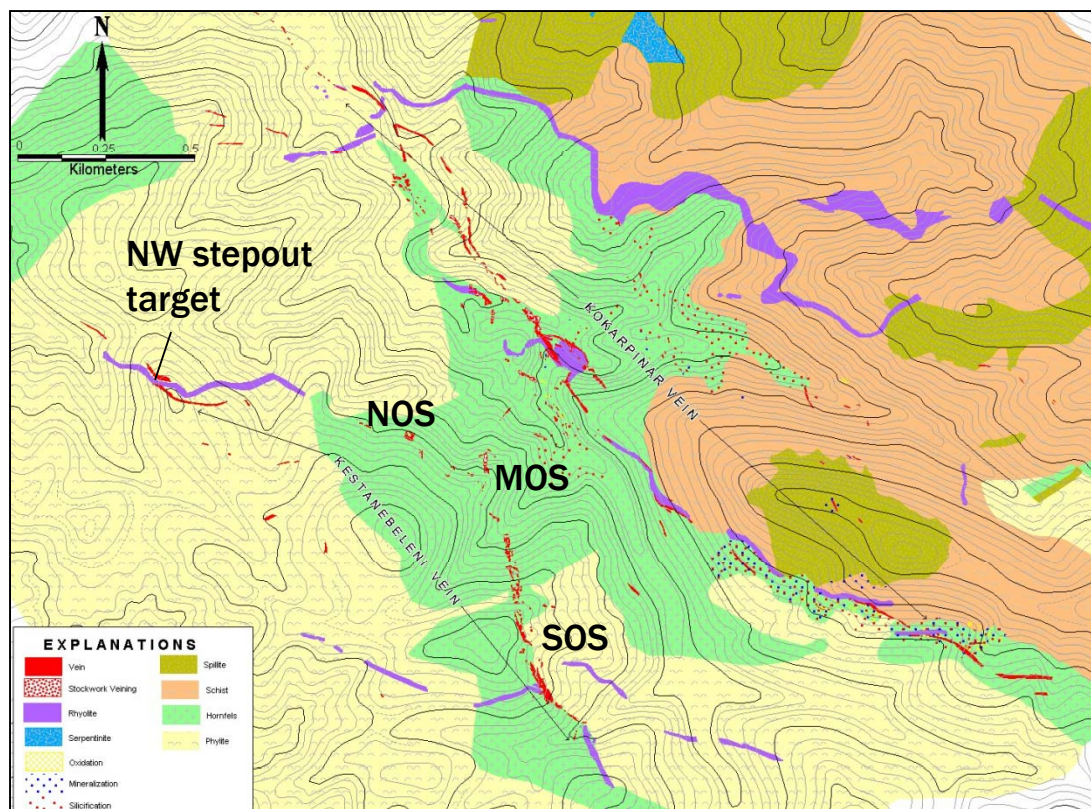


Kışladağ Resource Drilling

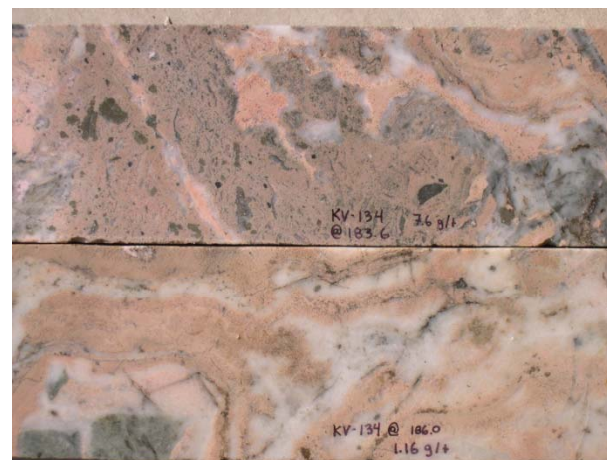


- Kışladağ Exploration 2010 Budget: \$4.0 M
- Continuation of successful 2009 program of defining additional resources contiguous with present reserve
- 2009 resource growth: 32% increase in Measured and Indicated ounces

Efemçukuru Exploration



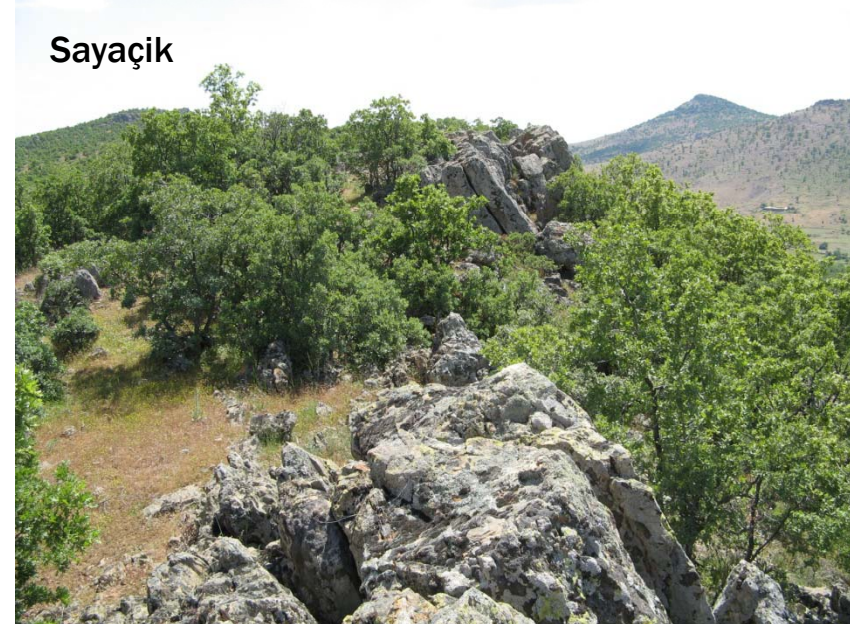
- Efemçukuru Exploration 2010 Budget: \$1.5 M
- Kestane Beleni northwest stepout
- Kokarpinar vein
 - Preliminary drill test 2009: 3.7m @ 11.1 gm/t Au
- North ore shoot infill drilling



Advanced Stage Porphyry Targets



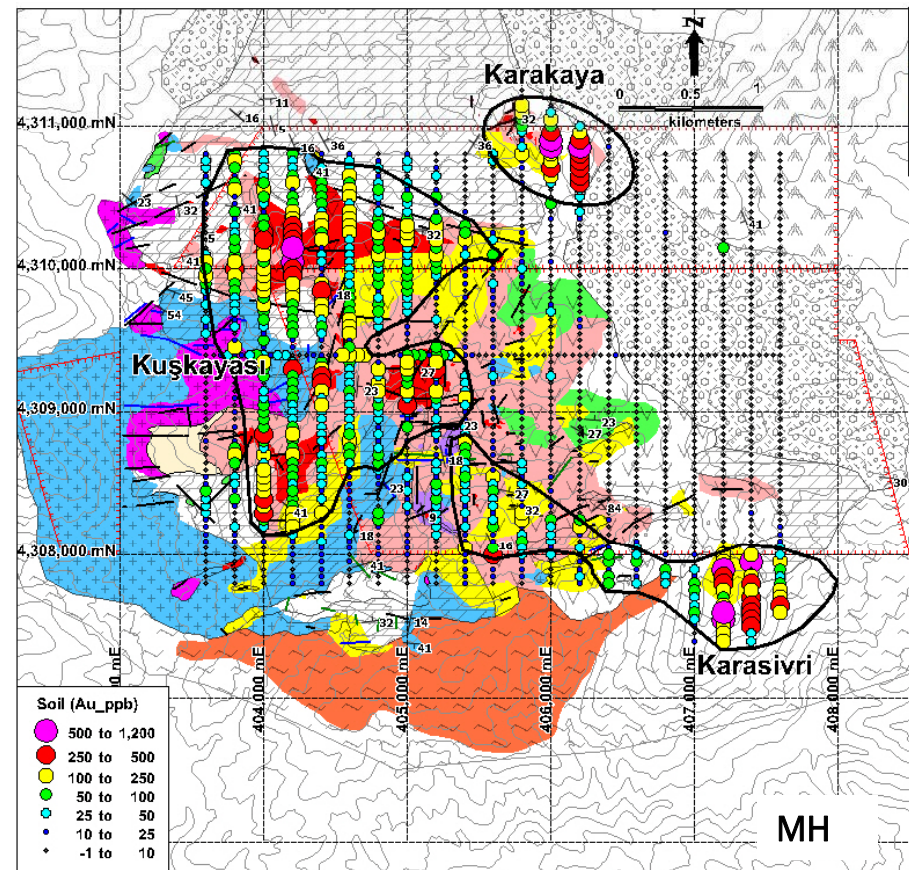
- 2010 Exploration Budget: \$1.8 M
- AS: mapping, geophysics target definition + drilling
- Savaşık: drilling geophysical/geological targets defined in 2009 exploration program



Early-stage Exploration Programs



- 2010 Exploration Budget: \$2.7 M
- MH IOCG prospect
 - Detailed mapping
 - Drilling of four targets defined by 2009 geophysical / geochemical / geological programs
- Konya-Sizma
 - Phyllite-hosted Au anomaly
 - Drill testing two target areas



Brazil Exploration



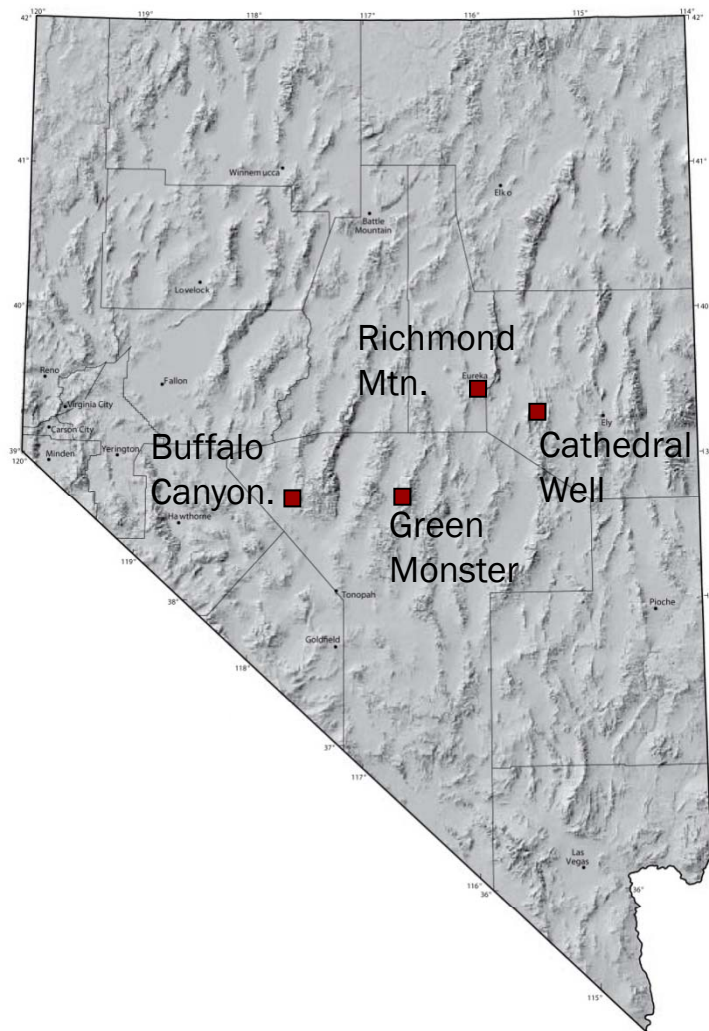
- 2010 Exploration Budget: \$4.1 M
- Tocantinzinho
 - Six month program to test target areas outside of main deposit
 - 4000m diamond drilling targeting geochemical, geophysical anomalies
 - Reconnaissance mapping, sampling of artisanal workings



Nevada Exploration Budget



- Nevada Exploration 2010 Budget: \$3.5 M
- Early stage, Carlin-style gold targets
- Option agreements



Nevada Exploration



- Drill-testing 4 grassroots projects through option agreements
 - AuEx Ventures properties
 - Buffalo Canyon
 - Green Monster
 - Bronco Creek properties
 - Richmond Mountain
 - Cathedral Well

