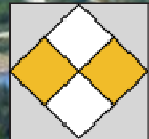


Emerging Intermediate Gold Producer



KIRKLAND LAKE
GOLD INC.

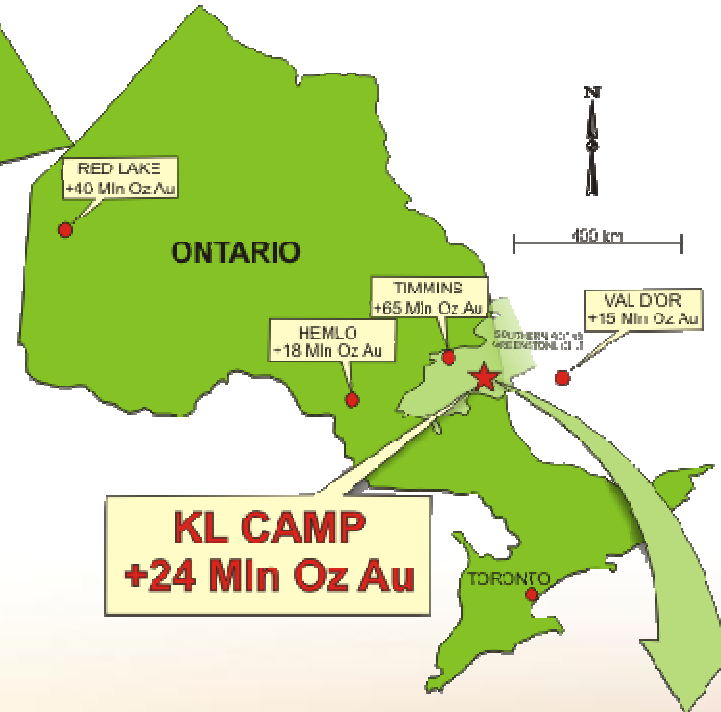
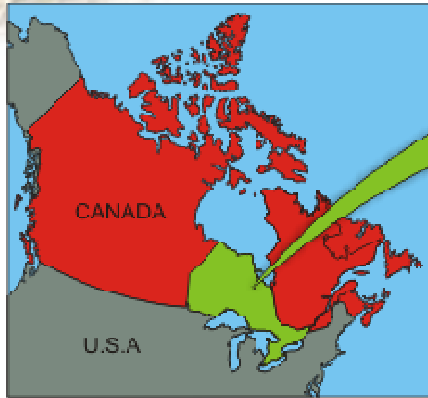


Kirkland Lake Gold Inc.

Cautionary Note Regarding Forward Looking Statements

This Press Release may contain statements which constitute ‘forward-looking statements’ within the meaning of the Private Securities Litigation Reform Act of 1995 of the United States of America, including statements regarding the plans, intentions, beliefs and current expectations of the Company, its directors, or its officers with respect to the future business activities and operating performance of the Company. The words “may”, “would”, “could”, “will”, “intend”, “plan”, “anticipate”, “believe”, “estimate”, “expect” and similar expressions, as they relate to the Company, or its management, are intended to identify such forward-looking statements. Investors are cautioned that any such forward-looking statements are not guarantees of future business activities or performance and involve risks and uncertainties, and that the Company’s future business activities may differ materially from those in the forward-looking statements as a result of various factors. Such risks, uncertainties and factors are described in the Company’s periodic filings with the Securities and Exchange Commission, including the Company’s annual report on Form 20-F and current report on Form 6-K, which may be viewed on EDGAR at www.sec.gov, and its periodic filings with the Canadian securities regulatory authorities, including the Company’s Annual Information Form and quarterly and annual Management’s Discussion & Analysis, which may be viewed on SEDAR at www.sedar.com. Should one or more of these risks or uncertainties materialize, or should assumptions underlying the forward-looking statements prove incorrect, actual results may vary materially from those described herein as intended, planned, anticipated, believed, estimated or expected. Although the Company has attempted to identify important risks, uncertainties and factors which could cause actual results to differ materially, there may be others that cause results not be as anticipated, estimated or intended. The Company does not intend, and does not assume any obligation, to update these forward-looking statements.

Kirkland Lake Gold Profile



LISTINGS: KGI - TORONTO (TSX)
KGI - LONDON (AIM)

SHARES OUTSTANDING: BASIC 67,572,635
FULLY DILUTED 72,718,099

RECENT: 52 WEEK HIGH \$10.96
52 WEEK LOW \$6.25

MARKET CAP: \$556 MILLION (SEPT. 14, 2010, \$8.30)

CASH BALANCE: C\$46 MILLION, NO DEBT (SEPT. 14, 2010)

OWNERSHIP: EUROPEAN INSTITUTIONS 40%
NORTH AMERICAN INSTITUTIONS 21%
MANAGEMENT AND DIRECTORS 27%
RETAIL 12%

ANALYST COVERAGE: WELLINGTON WEST CAPITAL MARKETS
DUNDEE SECURITIES
SCOTIA CAPITAL
CIBC WORLD MARKETS
OCEAN EQUITIES
MIRABAUD SECURITIES
RAYMOND JAMES
PANMURE GORDON

KGI OWNED MINES - HISTORIC PRODUCTION

MINE	GOLD OUNCES RECOVERED	GOLD OUNCES PER TON
WRIGHT-HARGREAVES	4,821,296	0.49
LAKE SHORE	8,602,791	0.50
TECK HUGHES	3,709,007	0.38
KIRKLAND MINERALS	1,172,955	0.37
MACASSA	3,569,253	0.44
1917 TO 2004	21,875,302	0.44



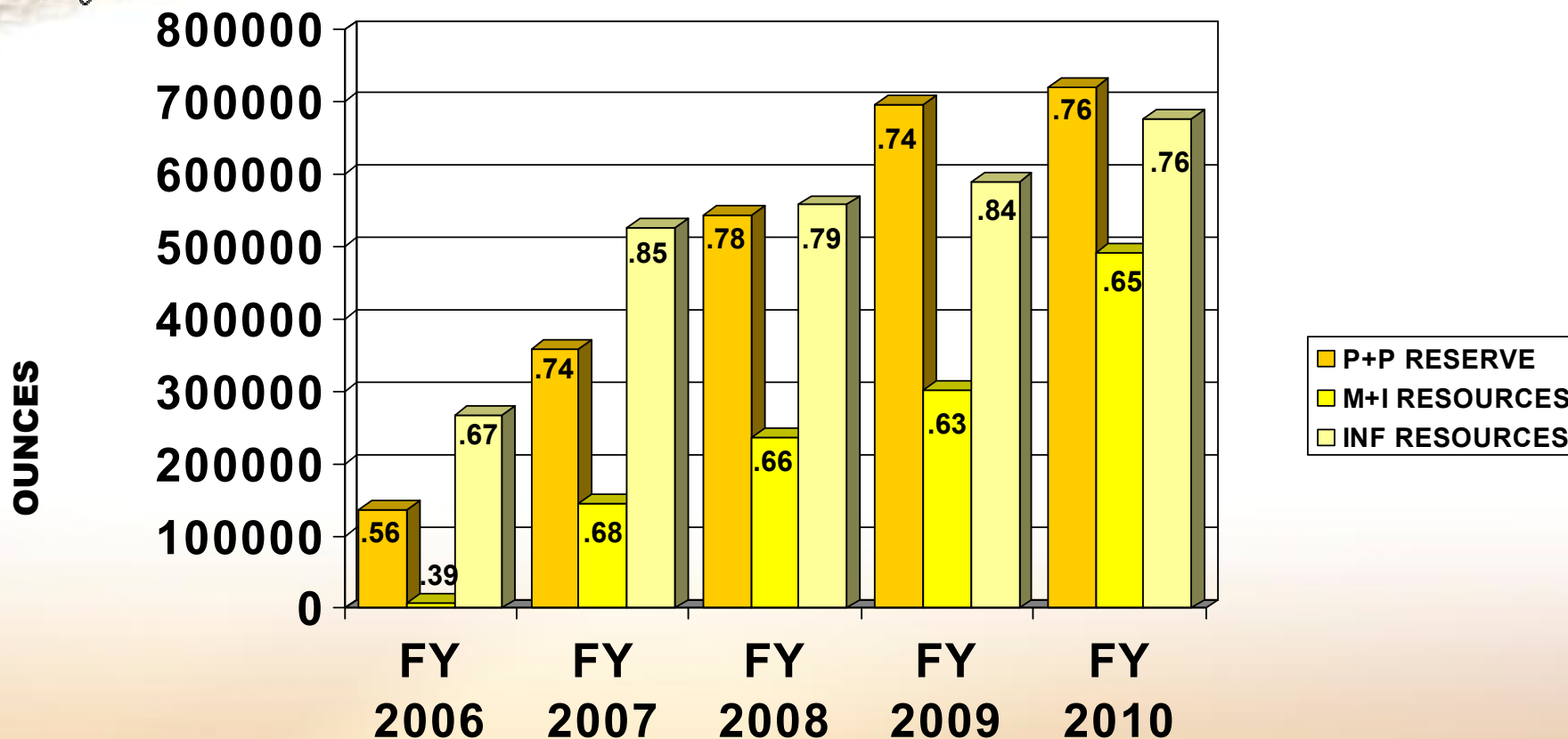
Corporate Overview

Corporate Goal: Develop +5 Million High Grade Gold Ounces and Expand Production

- **Record Q1 News**
 - Monthly record gold production in August 9,390 ounces
 - New man hoist installed for shaft #3
 - New “dry” for 300 positions opened June 2010
- **Production Vision and Growth Phases**
 - Phase one 90,000 to 100,000 ounces in fiscal year to April 2011
 - Phase two 180,000 to 200,000 ounces per year by Q3 2011 calendar year
 - Phase three further production expansion currently under evaluation
- **Capital Spending and Mine Expansion**
 - Hoist capacity increase from 1,000 tpd to 3,600 tpd utilizing existing shaft
 - No capex required at mill for phase one or phase two expansion
- **Reserve and Resource Development: FY 2011 Exploration Programs**
 - Exploration drilling to increase 56%; 172,000 ft to 283,000 ft
 - FY 2010 reserve and resource gains in excess of 388,000 ounces



South Mine Complex Reserve/Resource Growth

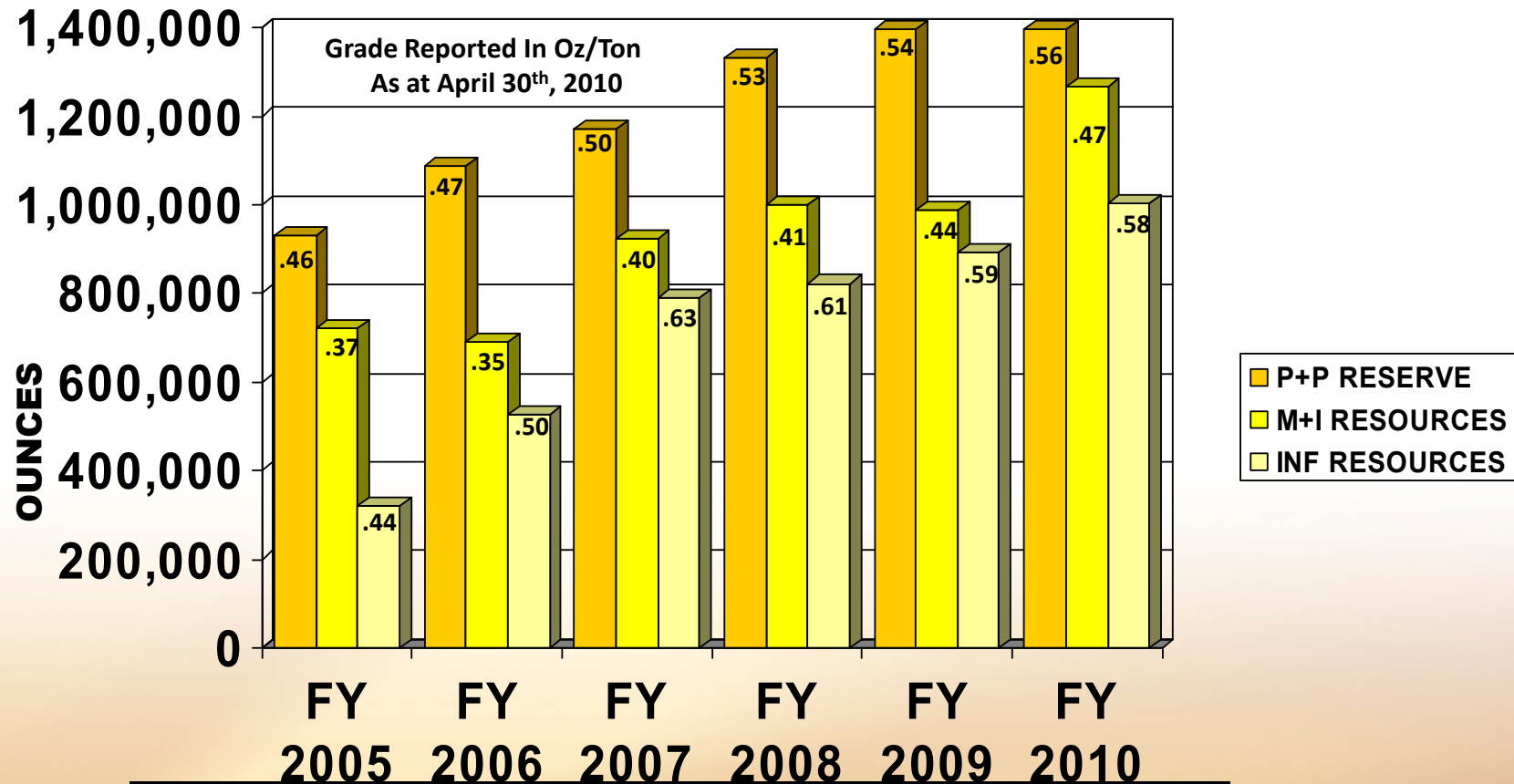


Category (FY 2010)	Tons	Grade	Ounces
Proven	127,000	0.64	82,000
Probable	827,000	0.77	639,000
Measured	8,000	0.42	3,000
Indicated	750,000	0.65	489,000
Inferred	893,000	0.76	677,000

See Kirkland Lake news release dated July 14th, 2010, a copy of which has been filed on SEDAR for further particulars
The contents of the above slide have been verified and approved by the Company's Chief Exploration Geologist, Stewart Carmichael,



Mine Wide Reserve/Resource Growth



Category (FY 2010)	Tons	Grade	Ounces
Proven	1,071,000	0.45	477,000
Probable	1,410,000	0.65	920,000
Measured	1,024,000	0.40	410,000
Indicated	1,668,000	0.51	857,000
Inferred	1,740,000	0.58	1,002,000

See Kirkland Lake news release dated July 14th, 2010, a copy of which has been filed on SEDAR for further particulars
The contents of the above slide have been verified and approved by the Company's Chief Exploration Geologist, Stewart Carmichael,



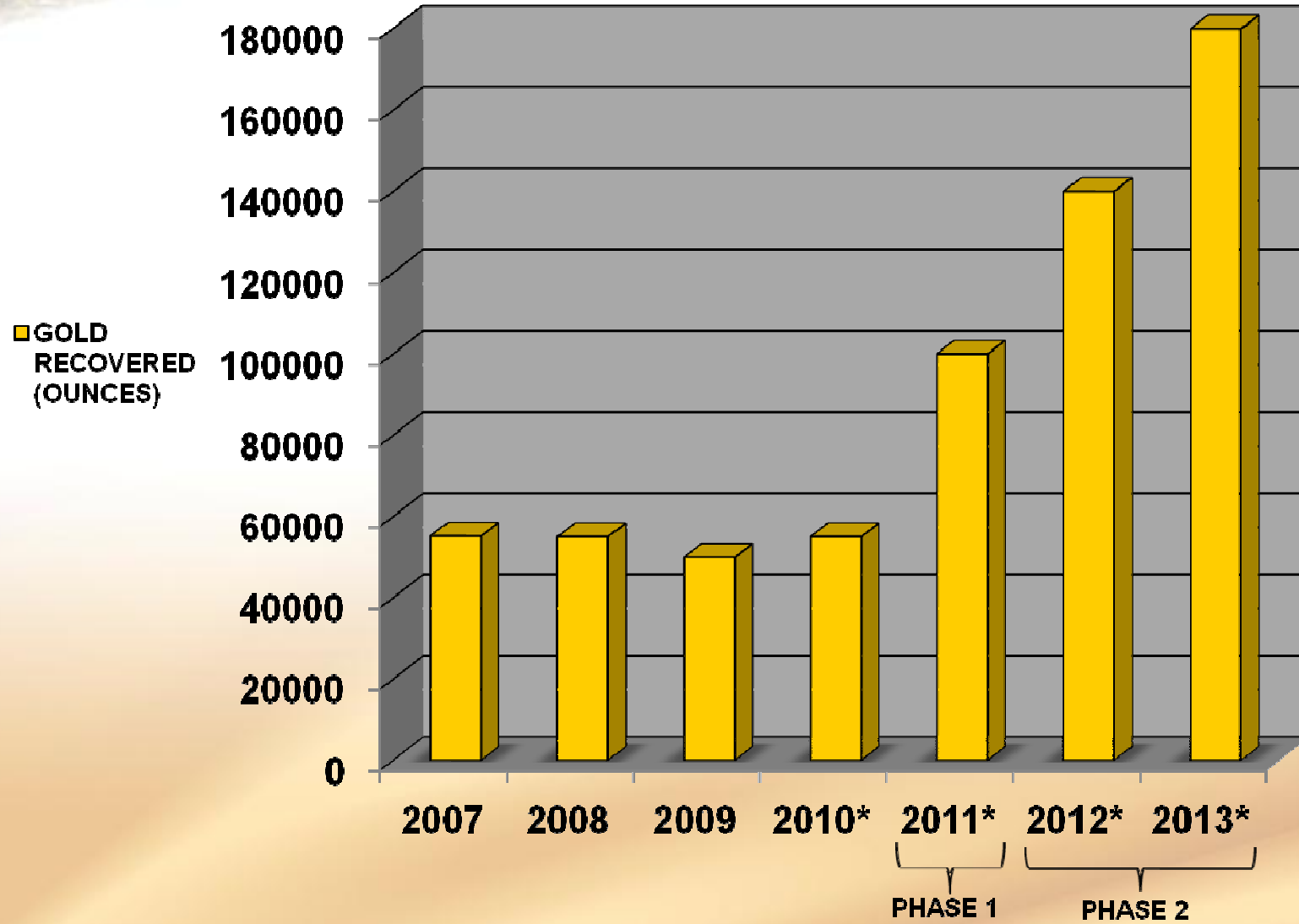
Production Growth

Phases

Production

- | Phases | Production |
|----------------------|--|
| 1 | <ul style="list-style-type: none">• Current ore production of 600 – 700 tpd translates to 90,000 – 100,000 ounces per year of gold production |
| 2 | <ul style="list-style-type: none">• Build ore production to 1,200 – 1,400 tpd, 7 days a week translates to 180,00 – 200,000 ounces per year of gold production• 700 tpd from high-grade SMC; 600 tpd from Main Break• Target date November 2011 |
| 3 – Under Evaluation | <ul style="list-style-type: none">• Build ore production to 1,800 – 2,400 tpd, 7 days a week which translates to 275,000 - 300,000 ounces per year• Current reconfiguration of hoisting capacity from 1,000 tpd to 3,600 tpd supports phase 3 ore production levels• Increase production ratio from the high grade SMC |

Production Forecasts

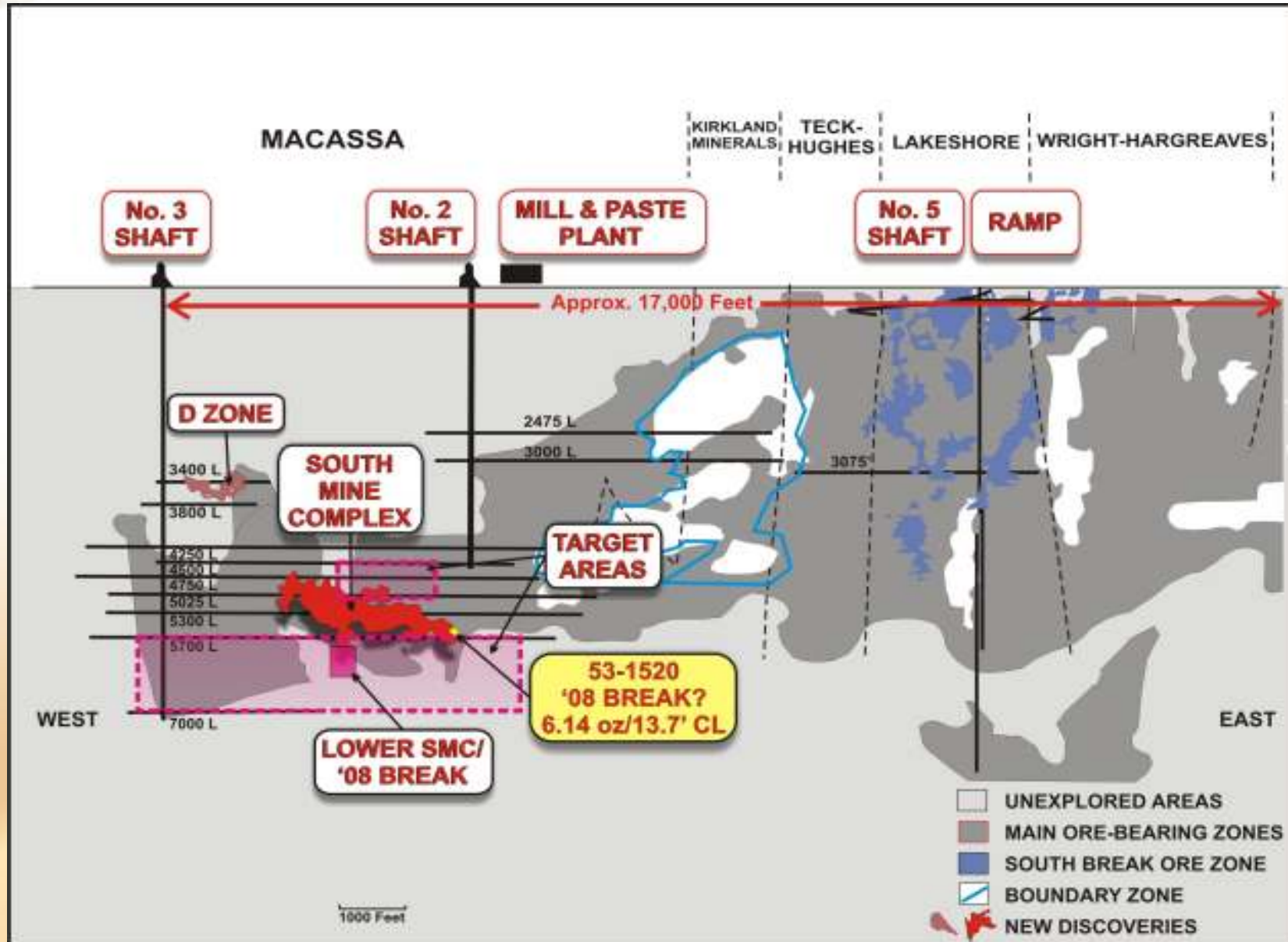


Fiscal Year Ends April 30th

* Projected figures



Longitudinal Section KL Gold Camp

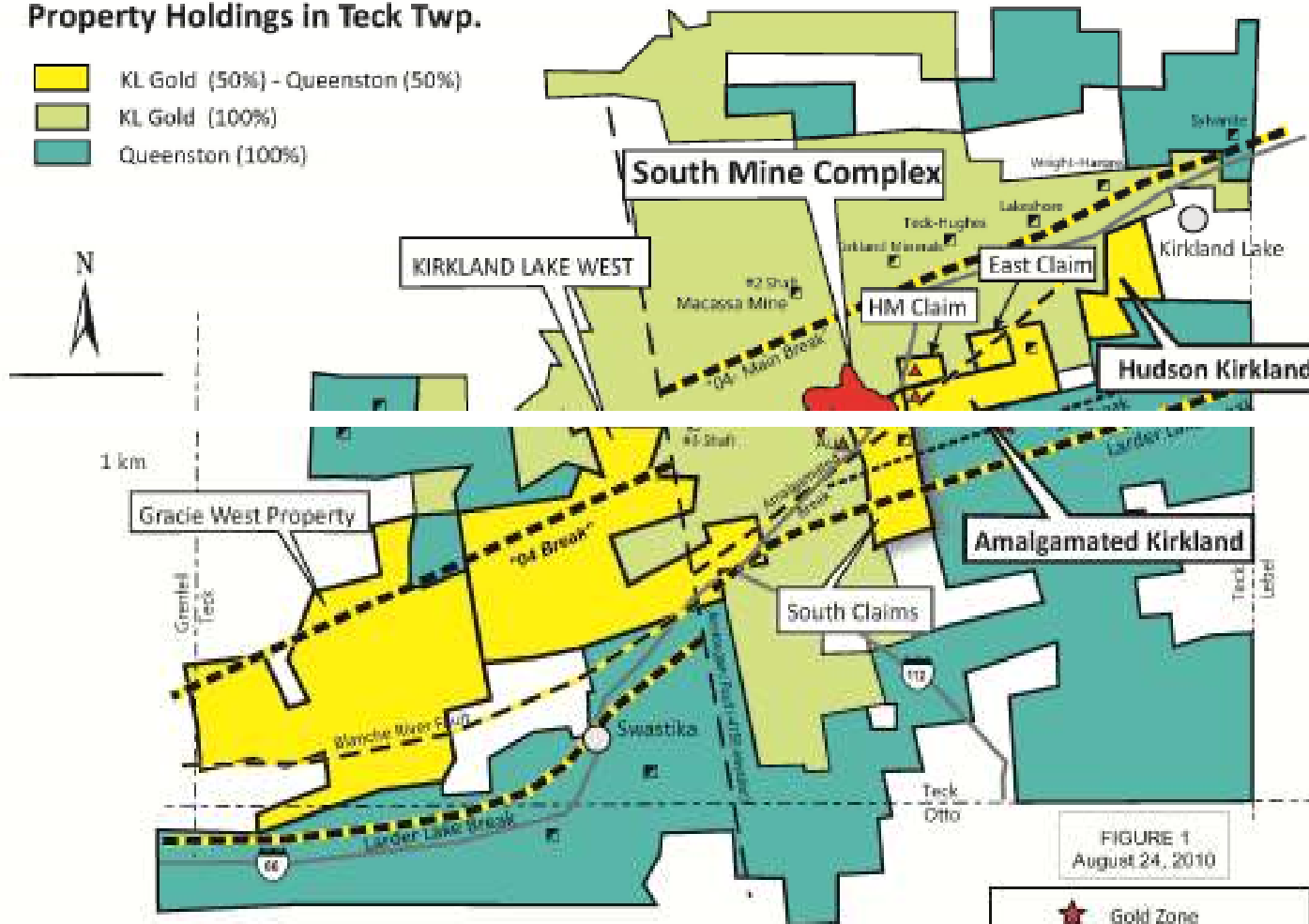




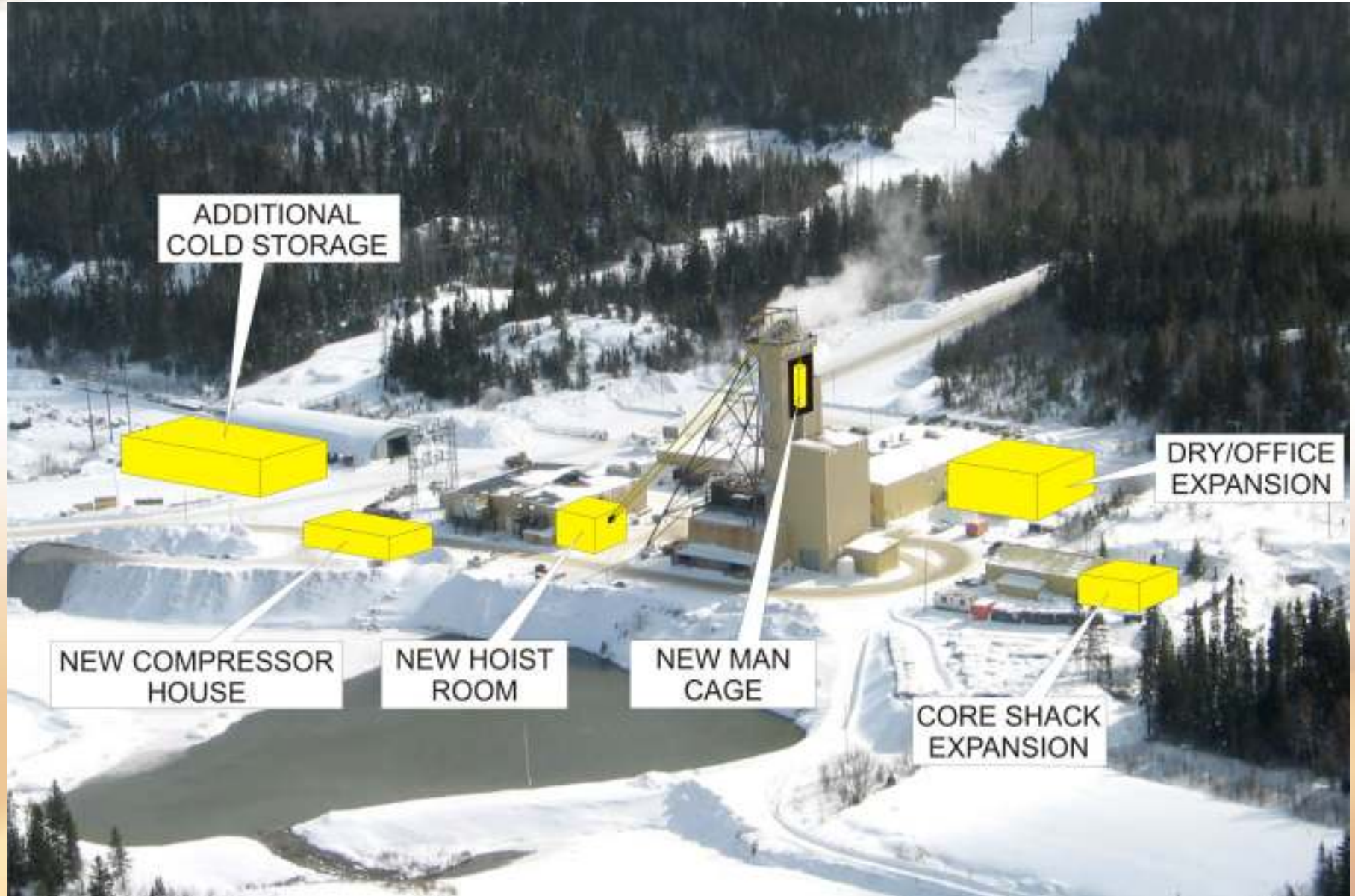
10 KMS of Strike Length Today

Property Holdings in Teck Twp.

- KL Gold (50%) - Queenston (50%)
- KL Gold (100%)
- Queenston (100%)



January 2009 Launched Hoist and Labour Expansion





New Man Hoist Built & 300 Man Dry Opened



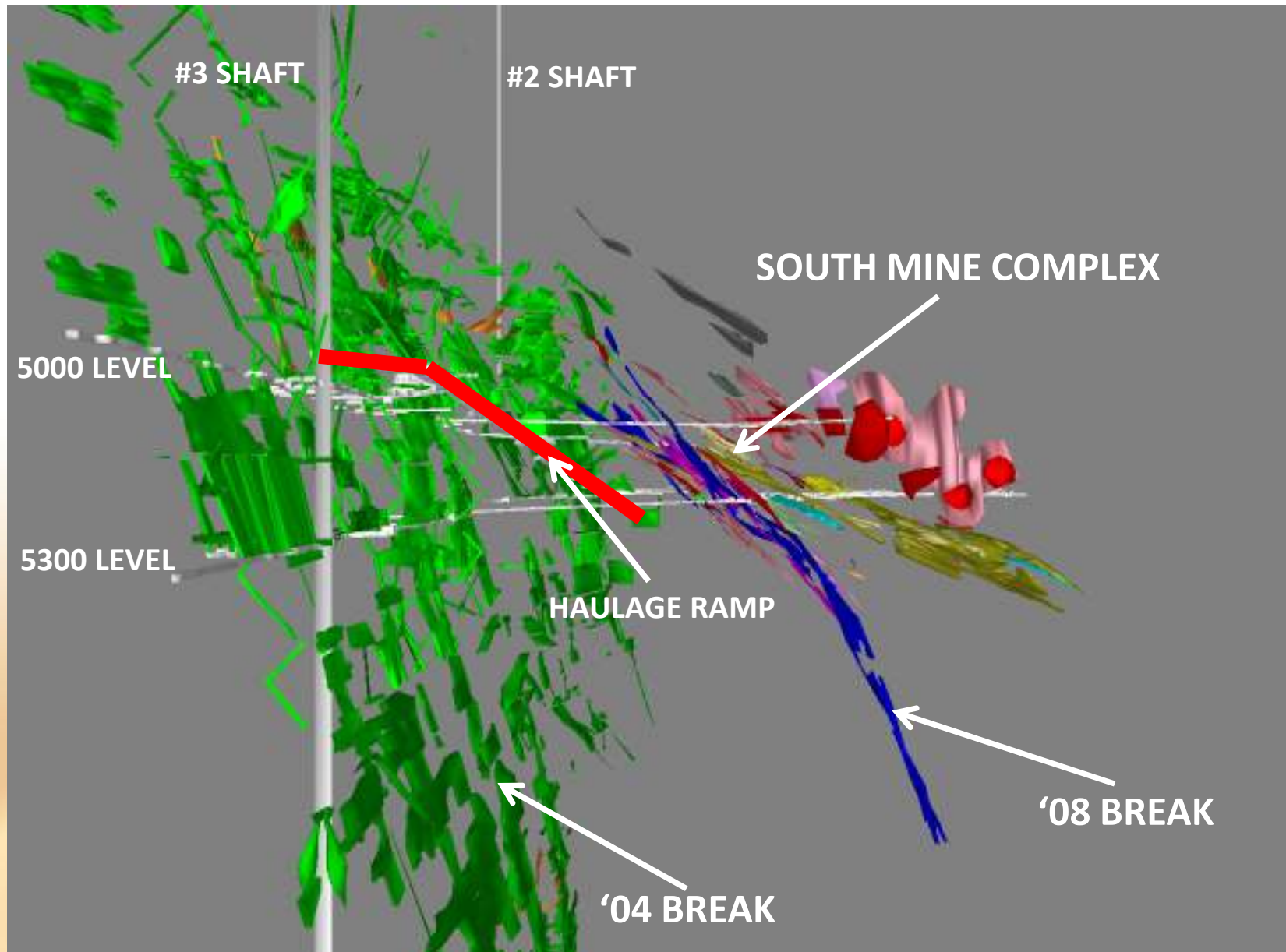


Current Mill Capacity 1,450 TPD; Minimal Capex Required



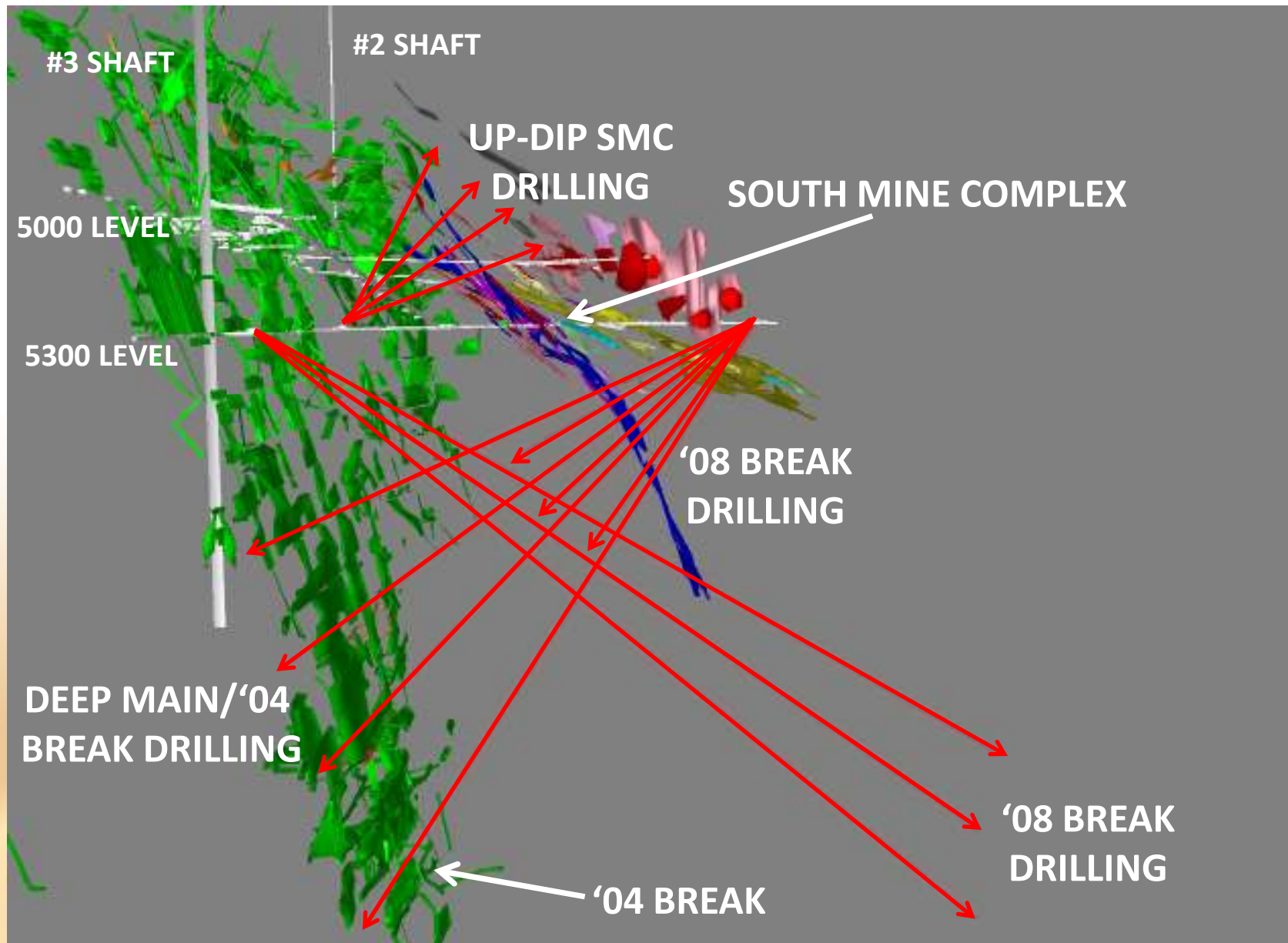


Exploration: FY 2010 Important New Discovery '08 Break





FY2011 Exploration Drill Program- Looking East





Positioned for Growth

High Grade Deposit

- Proven+Probable: 1,397,000 oz @ 0.56 opt or 19.2 gpt
- Measured+Indicated: 1,267,000 oz @ 0.47 opt or 16.1 gpt
- Inferred: 1,002,000 oz @ 0.58 opt or 19.9 gpt

Production Growth Forecast in Following Ranges:

- FY 2011 90,000 to 100,000 ounces
- FY 2012 120,000 to 140,000 ounces
- FY 2013 180,000 to 200,000 ounces

Existing Infrastructure Significantly Lowers Expansion Capex

- 1,450 tons per day mill on property and 2 deep shafts
- Increase to Hoisting Capacity to 3,600 tpd (Currently 1,000 tpd) achievable with less than \$10 m in incremental capex

Potential Phase 3 Expansion to 1,800 to 2,400 tons per day

- Decision in FY 2011

Exploration Upside: Doubling Exploration Spend to CAD \$7 million in FY 2011

- FY 2010 reserve and resource gains in excess of 388,000 ounces

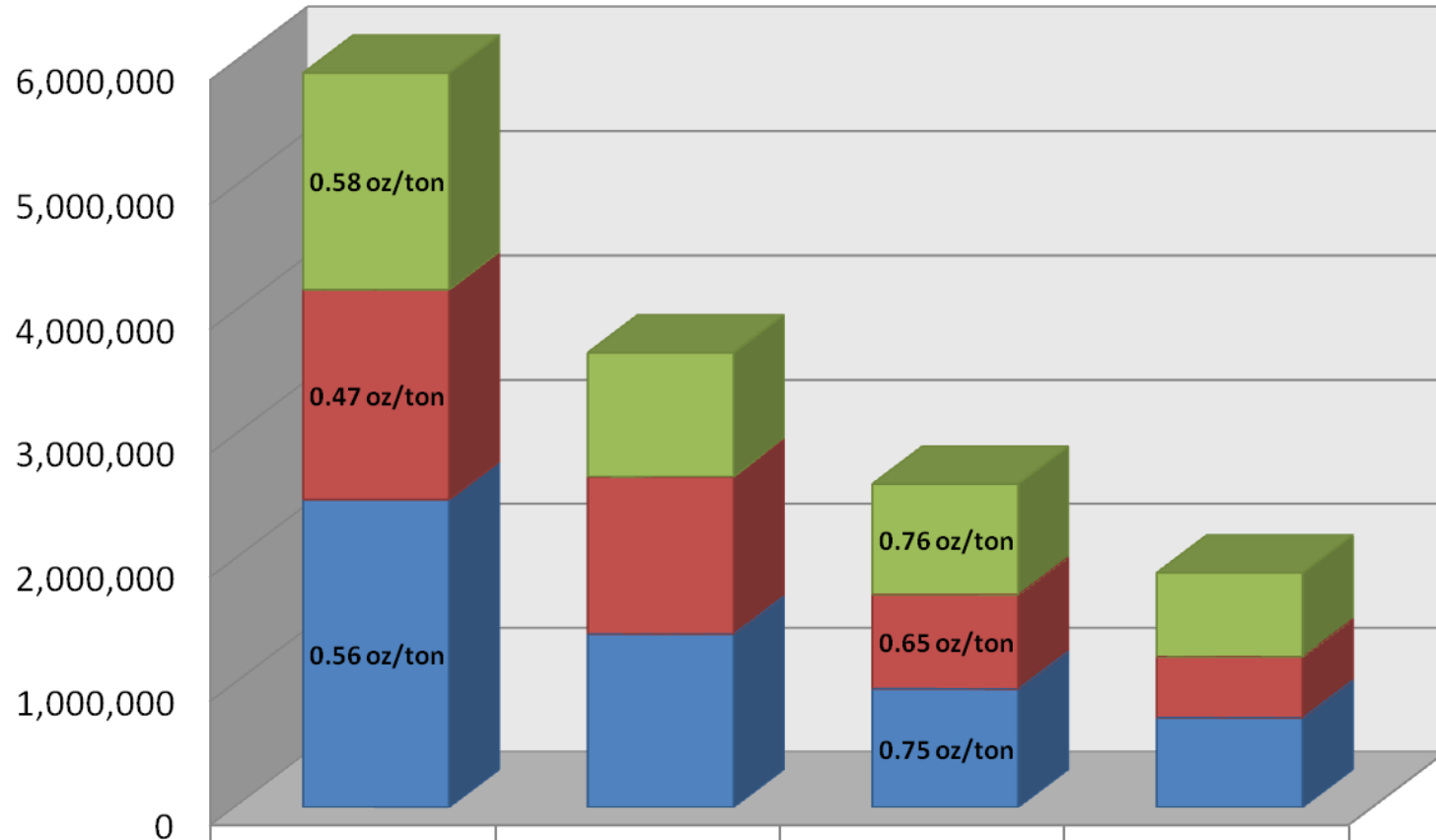


Appendix



Current Reserve and Resource Base Supports Production Growth

FY 2010 RESERVE/RESOURCE SUMMARY AS AT APRIL 2010



	WHOLE MINE TONS	WHOLE MINE OUNCES	SMC TONS	SMC OUNCES
INFERRED	1,740,000	1,002,000	893,000	677,000
MEASURED/INDICATED	1,692,000	1,267,000	758,000	492,000
PROVEN/PROBABLE	2,481,000	1,397,000	954,000	721,000



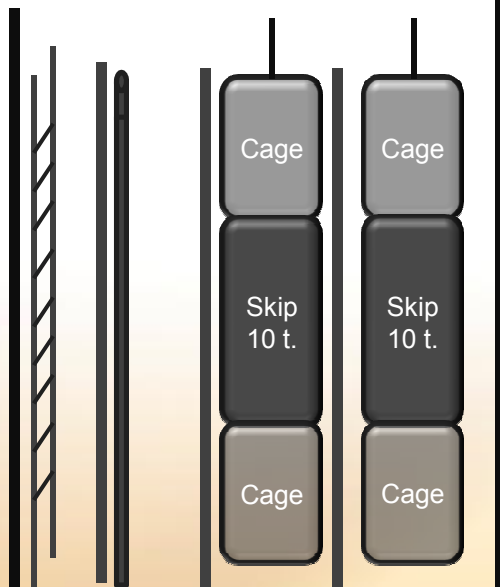
Capital Projects – Timeline

Task	Start	End	2009												2010												2011											
			Jan	Feb	Mar	Apr	May	June	July	Aug	Sept	Oct	Nov	Dec	Jan	Feb	Mar	Apr	May	June	July	Aug	Sept	Oct	Nov	Dec	Jan	Feb	Mar	Apr	May	June	July	Aug	Sept	Oct	Nov	Dec
New Dry Facility Accommodates 300 New Workers	1/1/2009	30/6/2010	█																																			
New Underground Haulage Ramp	1/1/2009	1/6/2011	█												█																							
300% Increase to Hoist Capacity from 1,000 tons per day to 3,000 tons per day	1/11/2009	1/6/2011													█																							
180,000 to 200,00 Ounces of Yearly Production	2/10/2011	30/11/2011																									█											



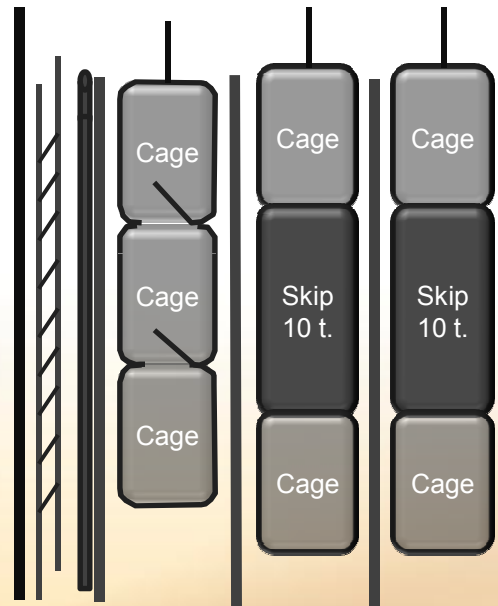
300% Increase to Hoisting Capacity

ACTUAL CONFIGURATION



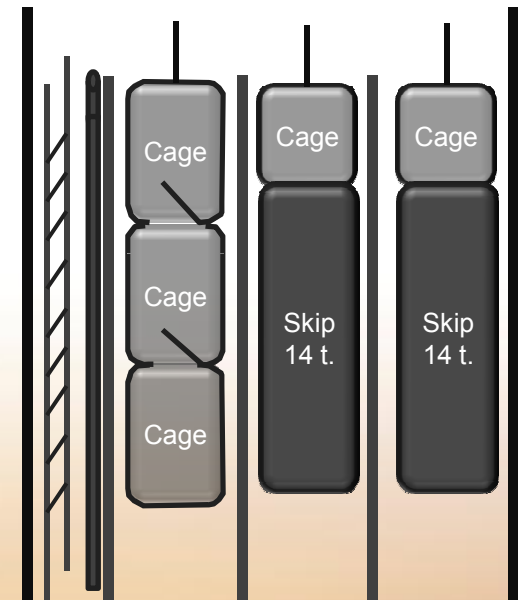
- 8 hours/day
 - 13 skips/hour
 - 10 tons/skip
- 1,040 tpd

INTERMEDIATE CONFIGURATION



- 16 hours/day
 - 13 skips/hour
 - 10 tons/skip
- 2,080 tpd

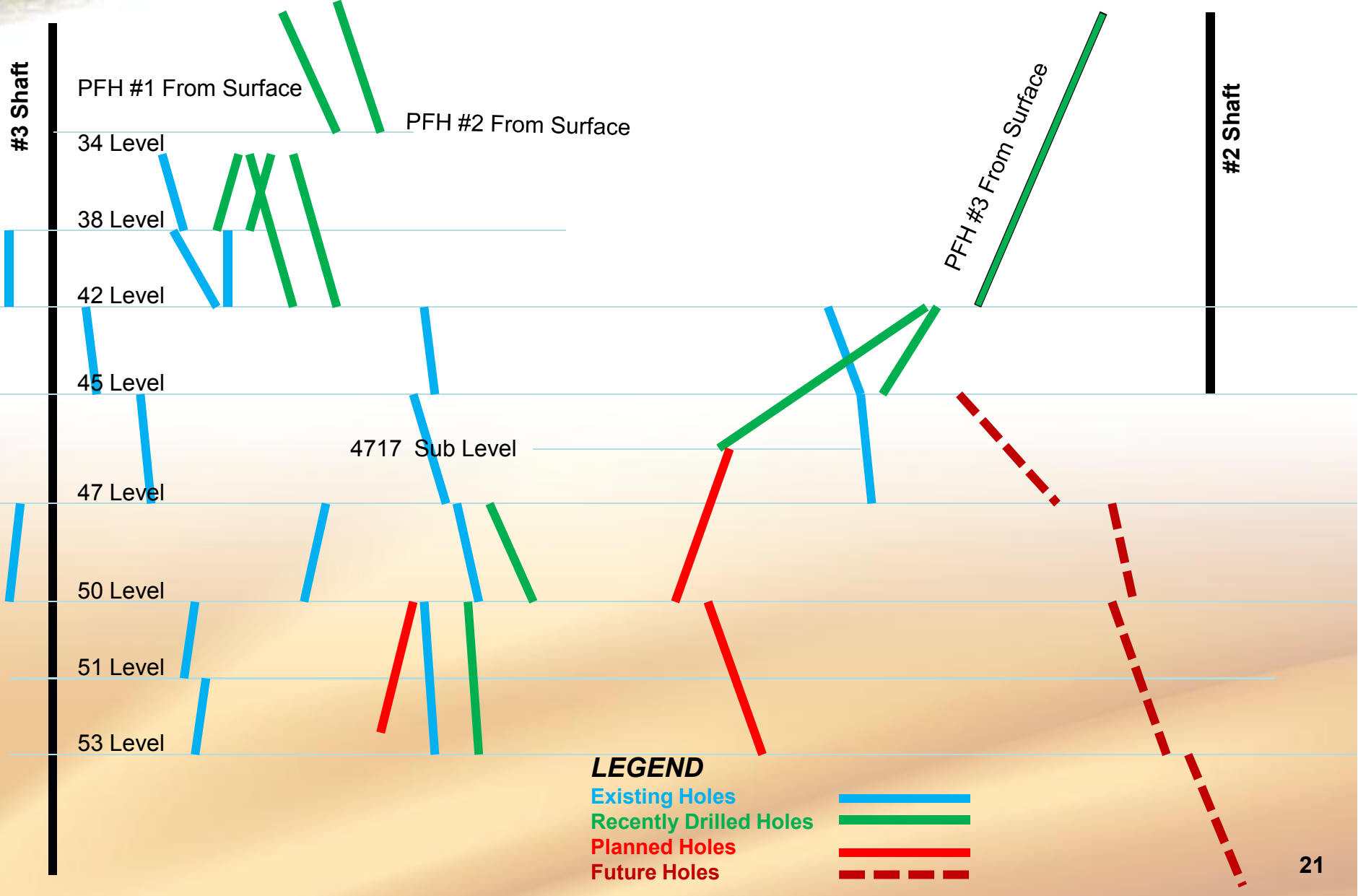
FINAL CONFIGURATION



- 20 hours/day
 - 13 skips/hour
 - 14 tons/skip
- 3,640 tpd



Pastefill System



FY 2011 Exploration Drilling Program Plan View

