

Disclaimer and Competent Person's Statement

This presentation is not a prospectus nor an offer for securities in any jurisdiction nor a securities recommendation.

The information in this presentation is an overview and does not contain all information necessary for investment decisions.

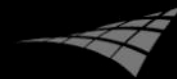
In making investment decisions in connection with any acquisition of securities, investors should rely on their own examination of Focus Minerals Ltd (**Focus Minerals** or the **Company**) and consult their own legal, business and/or financial advisers.

The information contained in this presentation has been prepared in good faith by Focus Minerals Ltd, however no representation or warranty expressed or implied is made as to the accuracy, correctness, completeness or adequacy of any statements, estimates, opinions or other information contained in this presentation.

To the maximum extent permitted by law, Focus Minerals Ltd, its directors, officers, employees and agents disclaim liability for any loss or damage which may be suffered by any person through the use or reliance on anything contained in or omitted from this presentation.

Certain information in this presentation refers to the intentions of Focus Minerals Ltd, but these are not intended to be forecasts, forward looking statements or statements about future matters for the purposes of the Corporations Act or any other applicable law. The occurrence of events in the future are subject to risks, uncertainties and other factors that may cause Focus Minerals Ltd's actual results, performance or achievements to differ from those referred to in this presentation. Accordingly, Focus Minerals Ltd, its directors, officers, employees and agents do not give any assurance or guarantee that the occurrence of the events referred to in the presentation will actually occur as contemplated.

The information in this report relating to Exploration Results, Mineral Resources or Ore Resources is based on information compiled by Dr Garry Adams who is a Member of the Australian Institute of Mining and Metallurgy and has sufficient exploration experience which is relevant to the style of mineralisation and type of deposit under consideration to qualify as a Competent Person as defined in the 2004 Edition of the 'Australasian Code for Reporting of Exploration Results, Mineral Resources and Ore Reserves'. Dr Garry Adams is a full time employee of Focus Minerals Ltd and consents to the inclusion in the report of the matters based on his information in the form and context in which it appears.



The background of the slide is a bright yellow gradient with a faint grid pattern. In the lower right quadrant, there is a small golden drop and a larger golden splash, both rendered with a metallic sheen and reflections.

Production, Profits, Potential

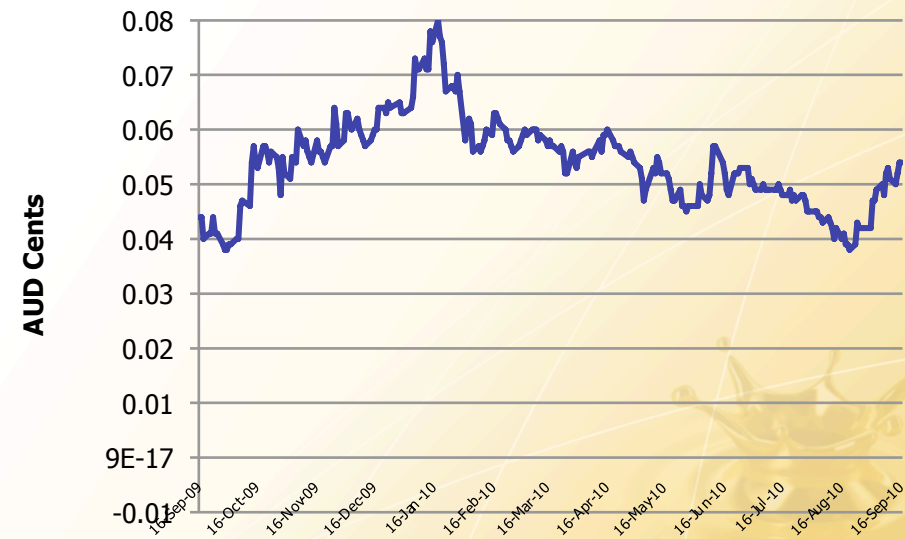
Building a substantial mid-tier producer

Focus Minerals

ASX Code	FML
Ordinary Shares	2,863m
Market Cap	A\$160m
Unlisted Options	110.7 m
Cash and Bullion	\$10m <small>(30 June 10)</small>
Debt	\$0.0m
Enterprise value	\$150m
Range 12 month	A\$0.035 – A\$0.08
Average Daily Volume	30 m shares ~A\$1.5m

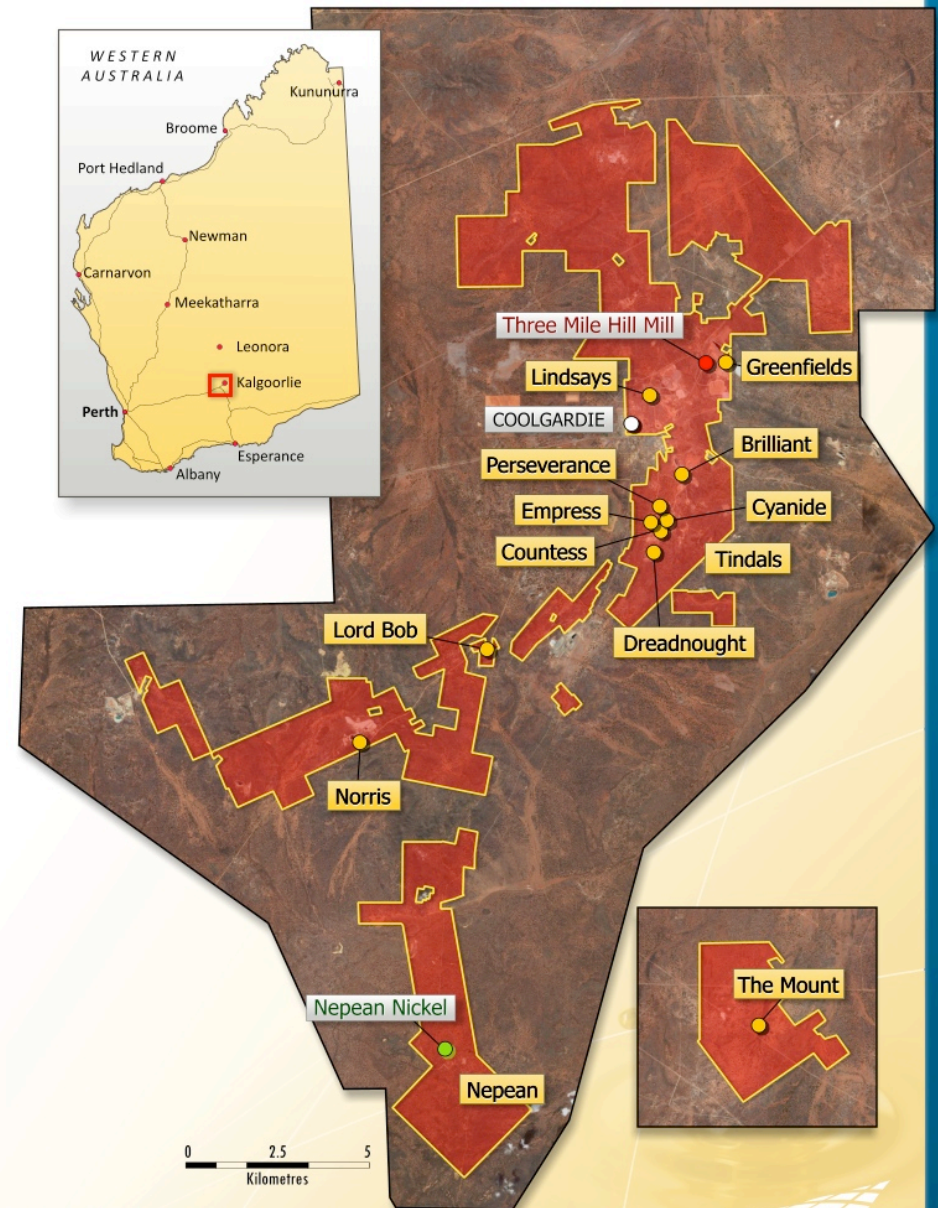
Board and Management	
Don Taig	Executive Chairman
Phillip Lockyer	Non Executive
Chris Hendricks	Non Executive
Campbell Baird	Chief Executive Officer
Jon Grygorcewicz	Chief Financial Officer
Peter Williams	Chief Operating Officer
Brad Valiukas	Chief Mining Officer
Gary Adams	Exploration Manager

Shareholder	Shares	%
ANZ Nominees	352.3 m	12.3%
New City Investment Managers Limited	80.3 m	2.80%
Old Mutual (Institutional Group)	74.5 m	2.60%
Kinetic Investment Partners Limited	33.0 m	1.15%
Management	70.5 m	2.44%

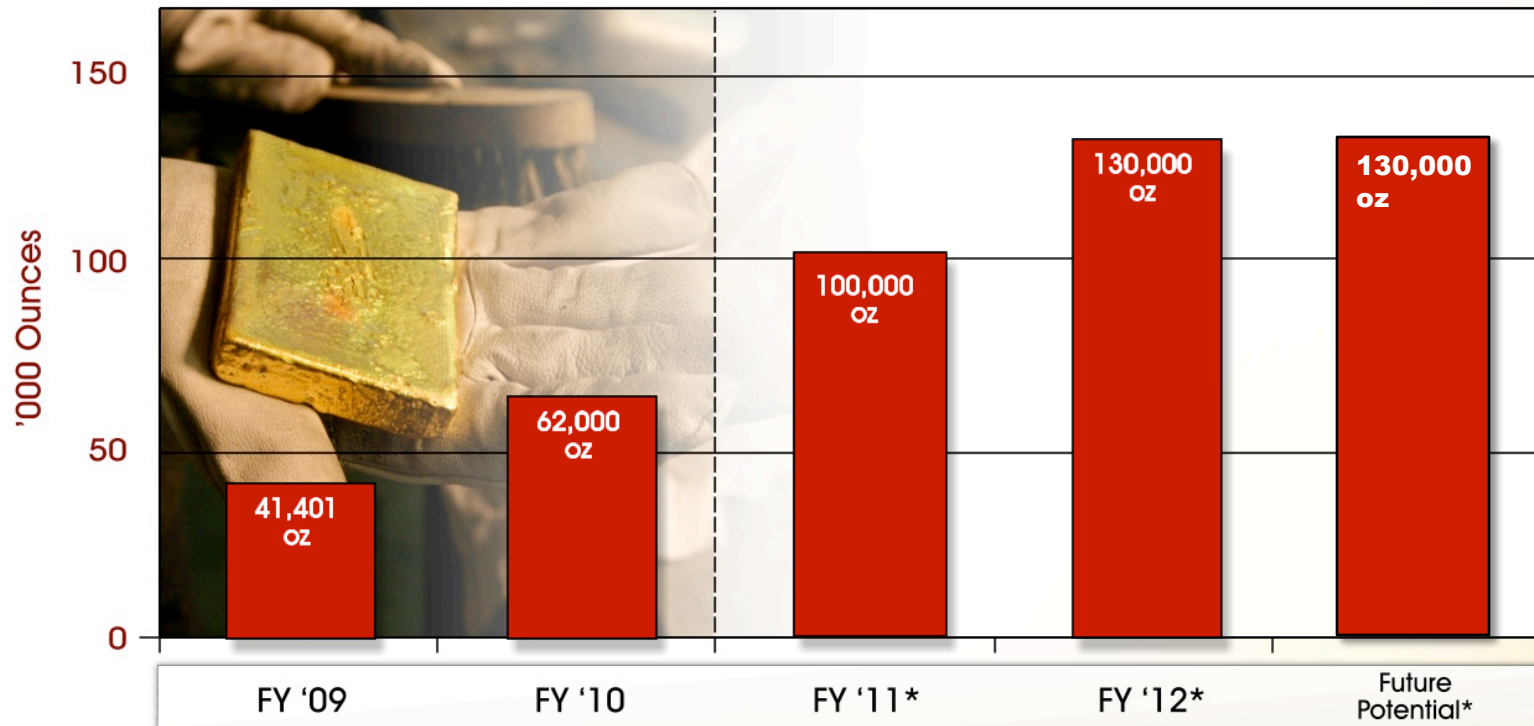


Bringing Focus...*into Focus*

- Situated In Prolific Eastern Goldfields Gold Belt – 2.6Moz production endowment
- Total Resources of 26 million tonnes @ 2.6 g/t for 2.0 million ounces
- Targeting Sustained production of 130,000 oz by 2012
- NPAT A\$3.4million 08/09
- NPAT A\$10.9 million 09/10
- Two producing Underground Mines
- Ore Reserves of 207,000 oz
- 40,000 ounce surface stockpile
- Pipeline of Open Pits pending in 2011
- Overwhelming endowment of riches in exploration



Bringing Focus...*into Focus*



Production, Profits, Potential



3D Fly-Through



Flagship Project – Tindals Mining Centre



- Ramp-up to full production continuing over next two quarters
- Average operating depth 300 m
- Gold endowment of 2,500 ounces per vertical metre
- 2.4 million tonnes @ 4.1 g/t Resource in Measured, Indicated and Inferred
- Building Reserves off a sustainable base of 100,000 ounces
- Down hole geophysics delivering fresh exploration success not just at depth but to North and South



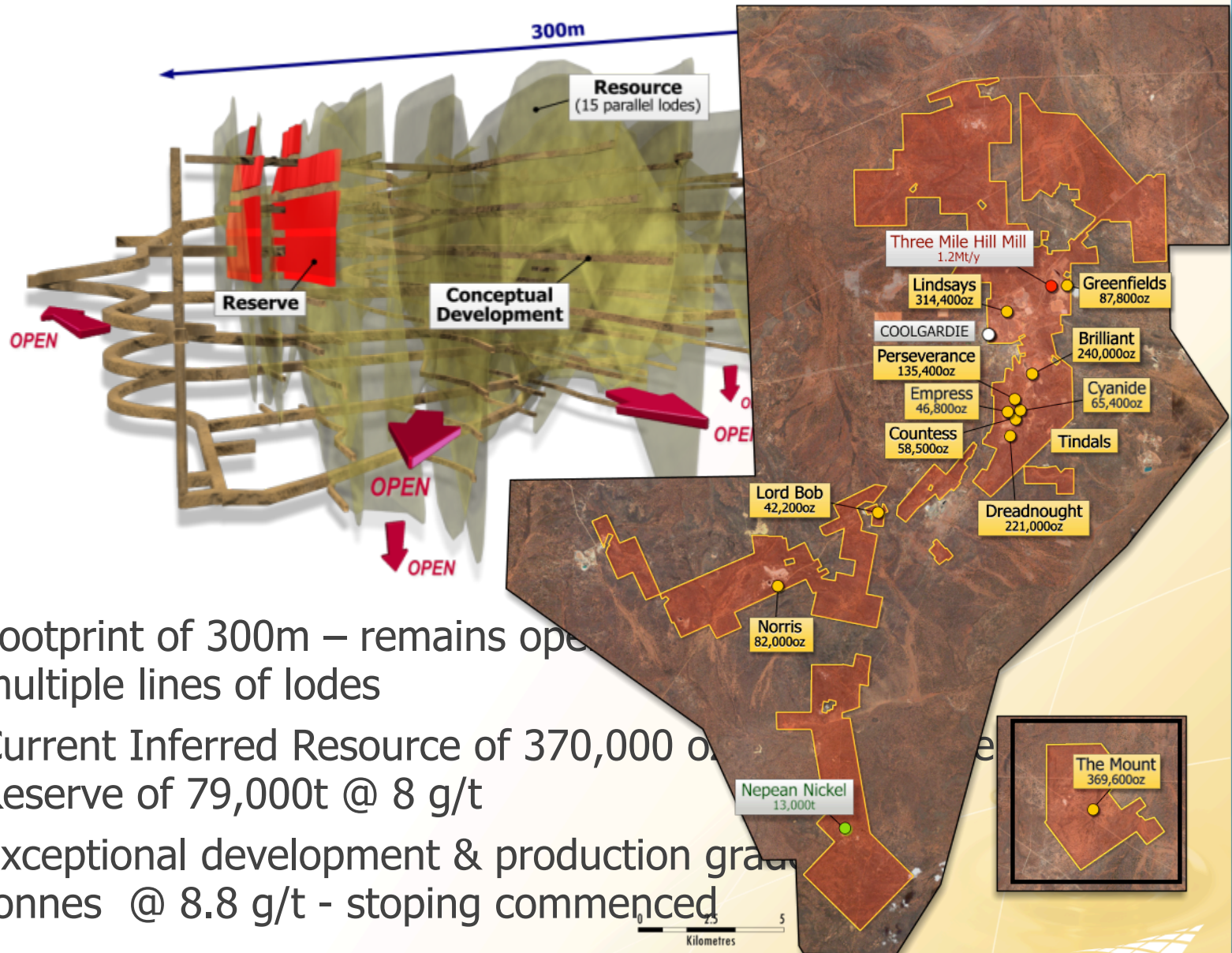
Flagship Project – Tindals Mining Centre



- Ramp-up to full production continuing over next two quarters
- Average operating depth 300 m
- Gold endowment of 2,500 ounces per vertical metre
- 2.4 million tonnes @ 4.1 g/t Resource in Measured, Indicated and Inferred
- Building Reserves off a sustainable base of 100,000 ounces
- Down hole geophysics delivering fresh exploration success not just at depth but to North and South

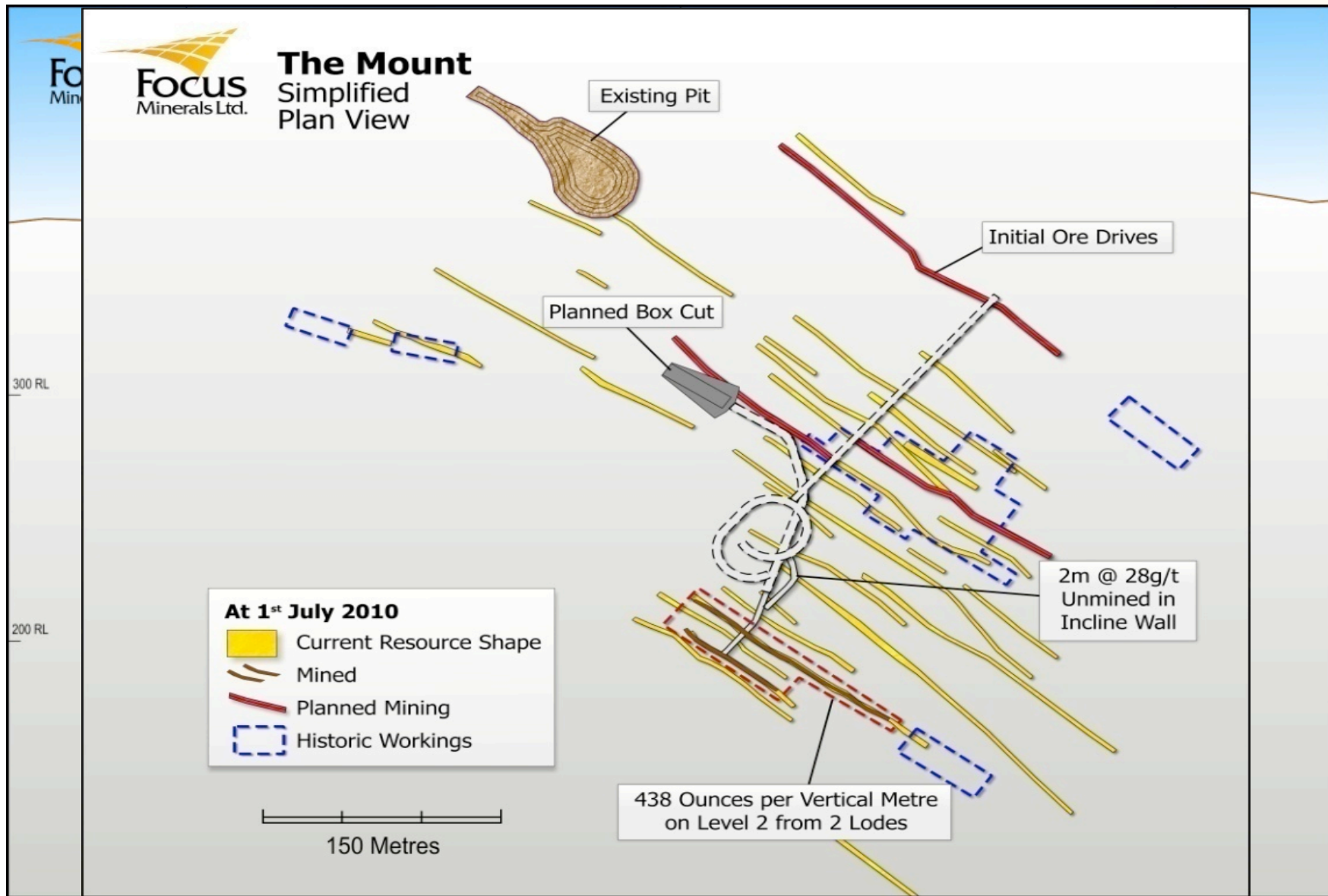


The Mount – A Potential Company-Maker



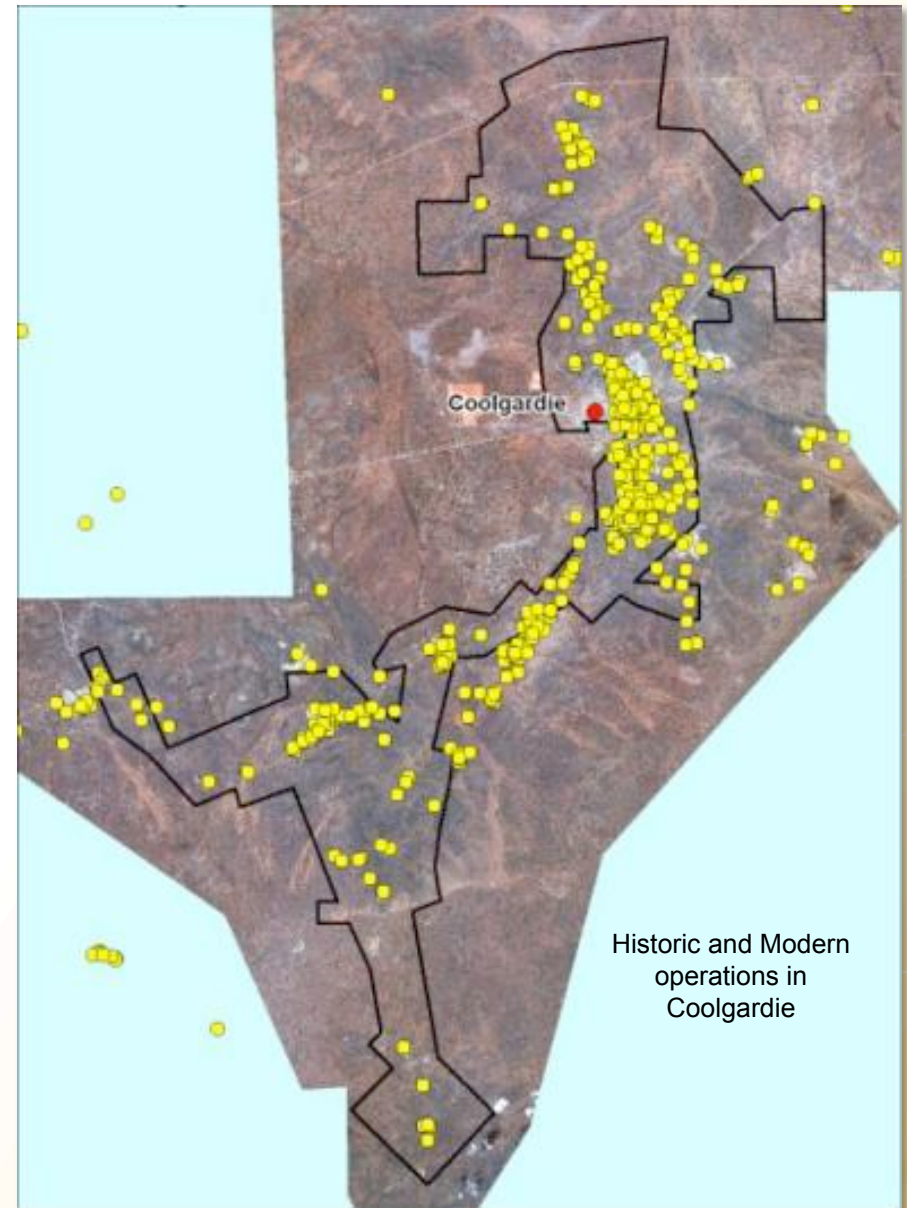
- Footprint of 300m – remains open multiple lines of lodes
- Current Inferred Resource of 370,000 oz
Reserve of 79,000t @ 8 g/t
- Exceptional development & production grades
tonnes @ 8.8 g/t - stoping commenced

Next Phase – from trial mining to potential 60,000 oz pa



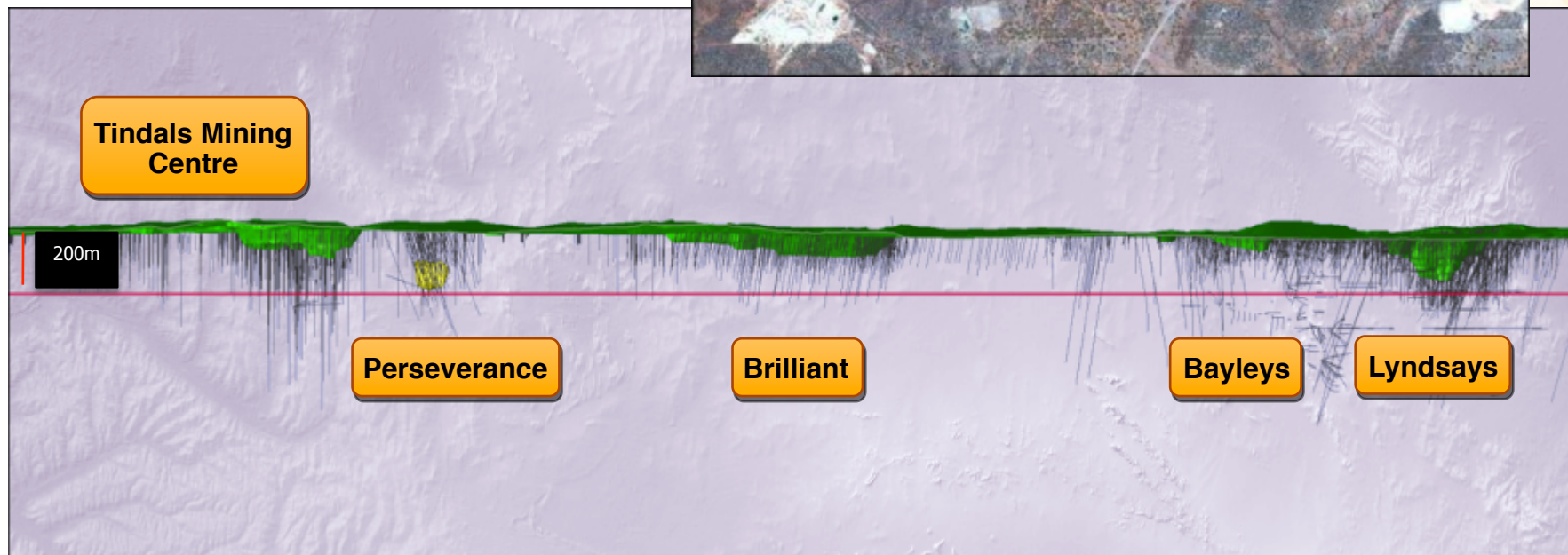
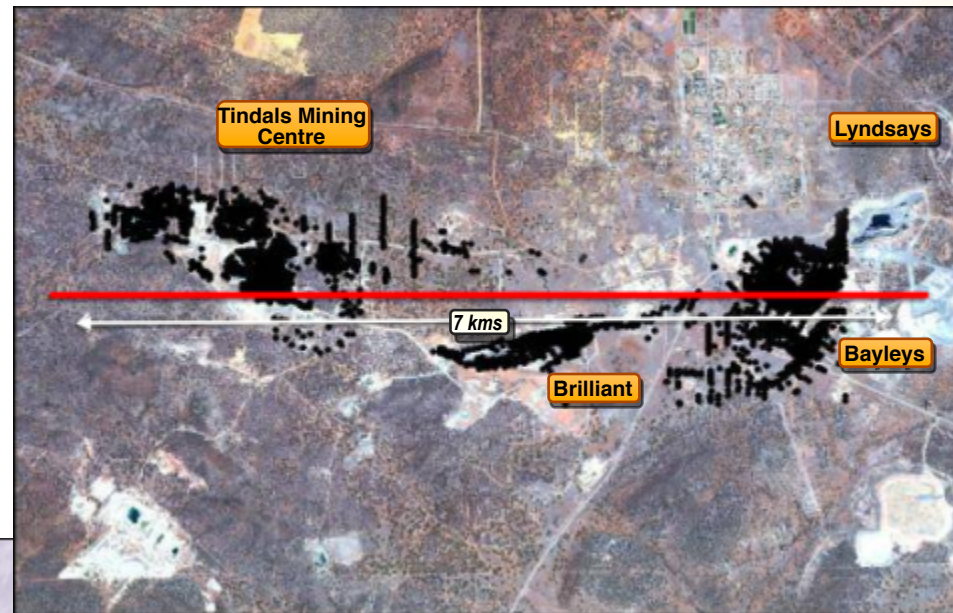
Exploration: A Rich Portfolio of History and Potential

- Continuous gold production for over 100 years (2.6m ounces produced)
- 1st time in history that the Coolgardie region has been consolidated by a single company
- Discrete projects can be assessed effectively as part of a much bigger system
- Areas Of Interest
 - Coolgardie Exploration
 - The Mount
 - Lake Cowan



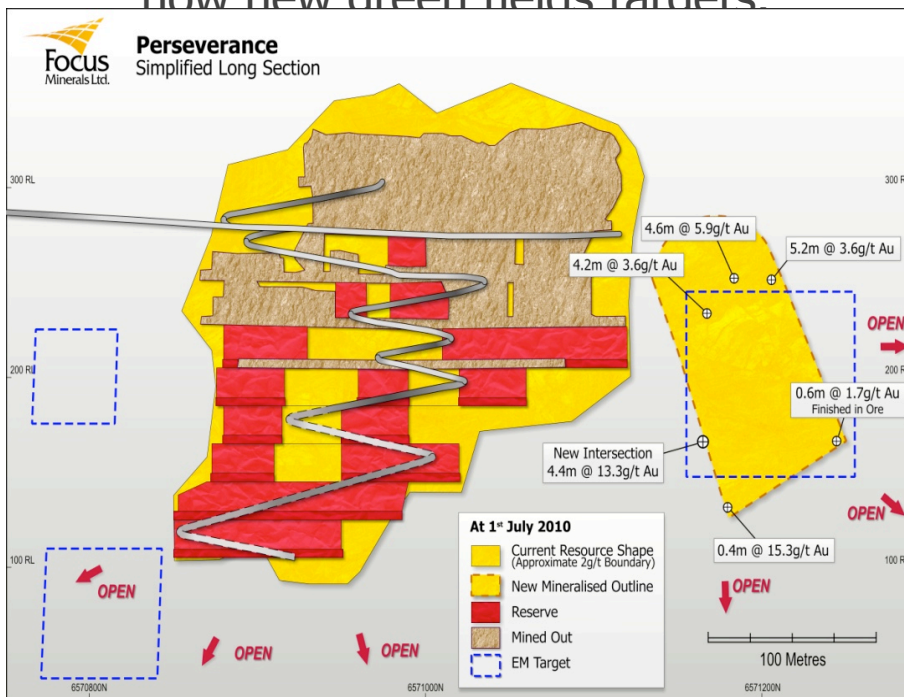
How and where do you start?

- Endowment of projects and targets can be overwhelming
- Regional QA/QC has been ongoing since 2008
- Regional geophysics flown in 2009
- January 2010 exploration really got started
- Use of geophysics is driving success



Coolgardie – Tindals and Geophysics

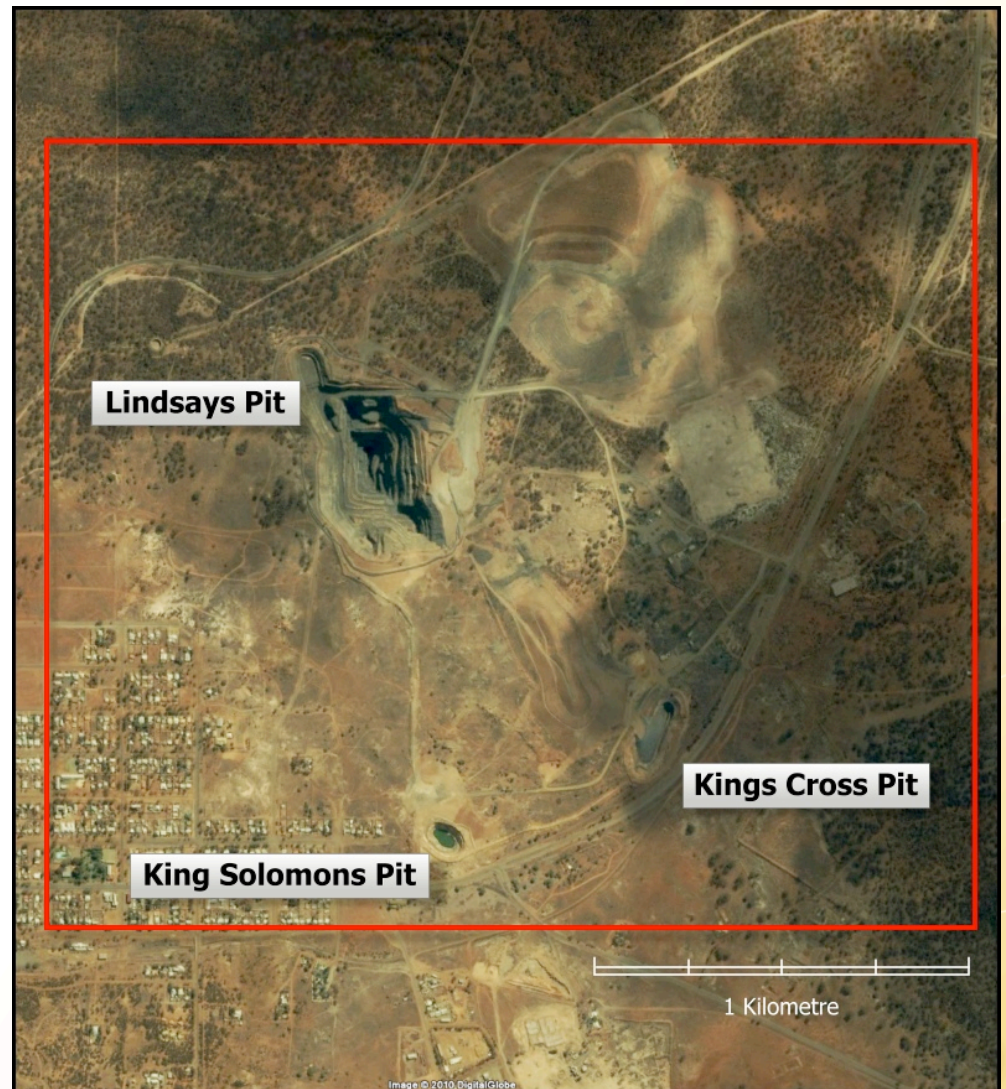
- The use of EM has driven exploration success at Tindals
- Has been used only in strength over past 9 months
- Recent success in opening up Perseverance North, Big Blow and now new green fields targets



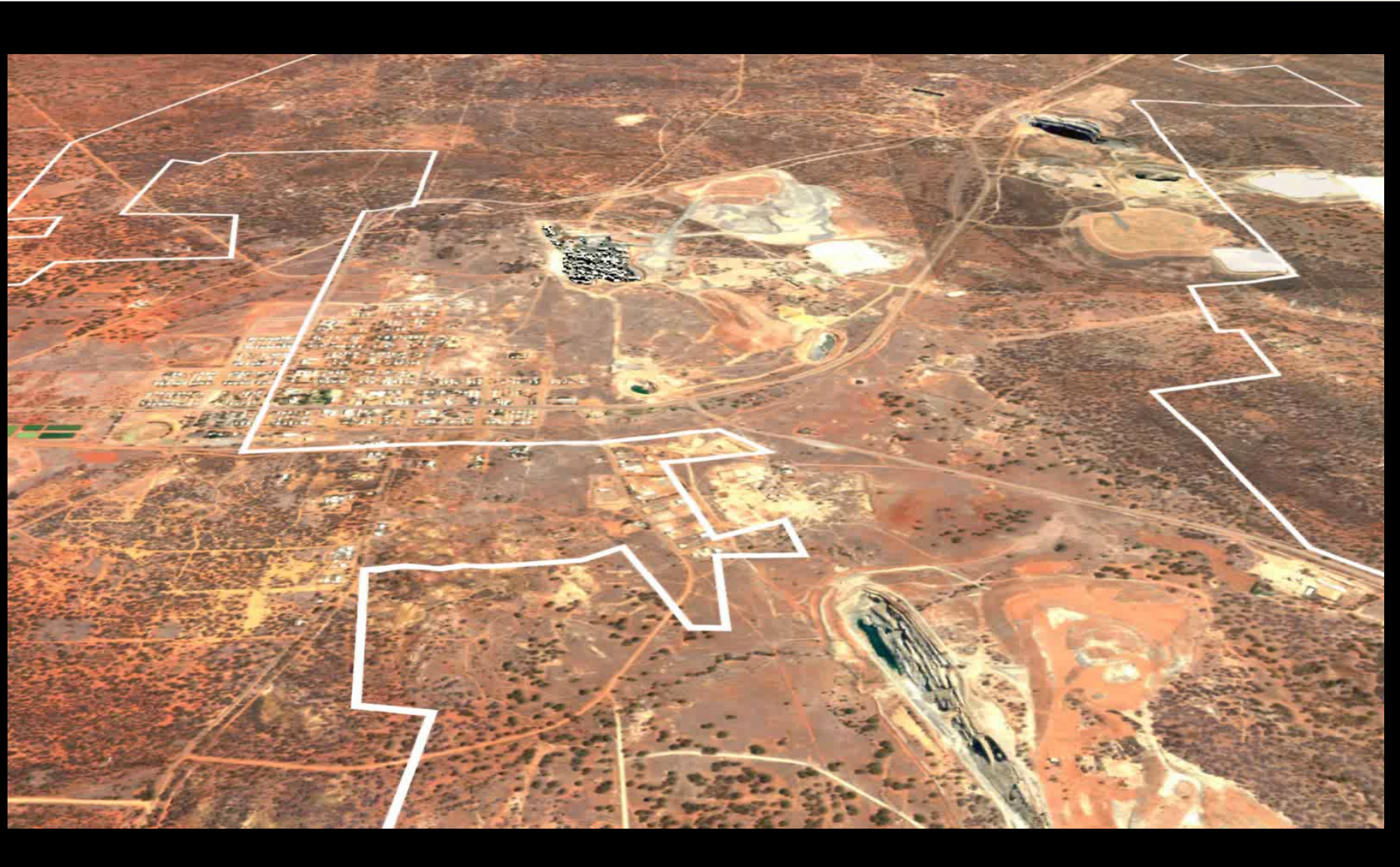
Coolgardie – The Potential

The Endowment – A Macro View

- Lindsays open pit (Resources)
- Bayleys underground
- Prices (Resource)
- Kings Cross (Resource)
- King Solomon (Resource)
- Hillside (Resource)
- Ashes



The Future



Our Future... The Priorities



- ✓ Growing, Quality Assets, Profitable,
- ✓ Reserve Growth to Continue!
- ✓ Expanding Mining at the Tindals Mining Centre
- ✓ Fast Track Development at The Mount Project
- ✓ Rich Organic Growth Pipeline

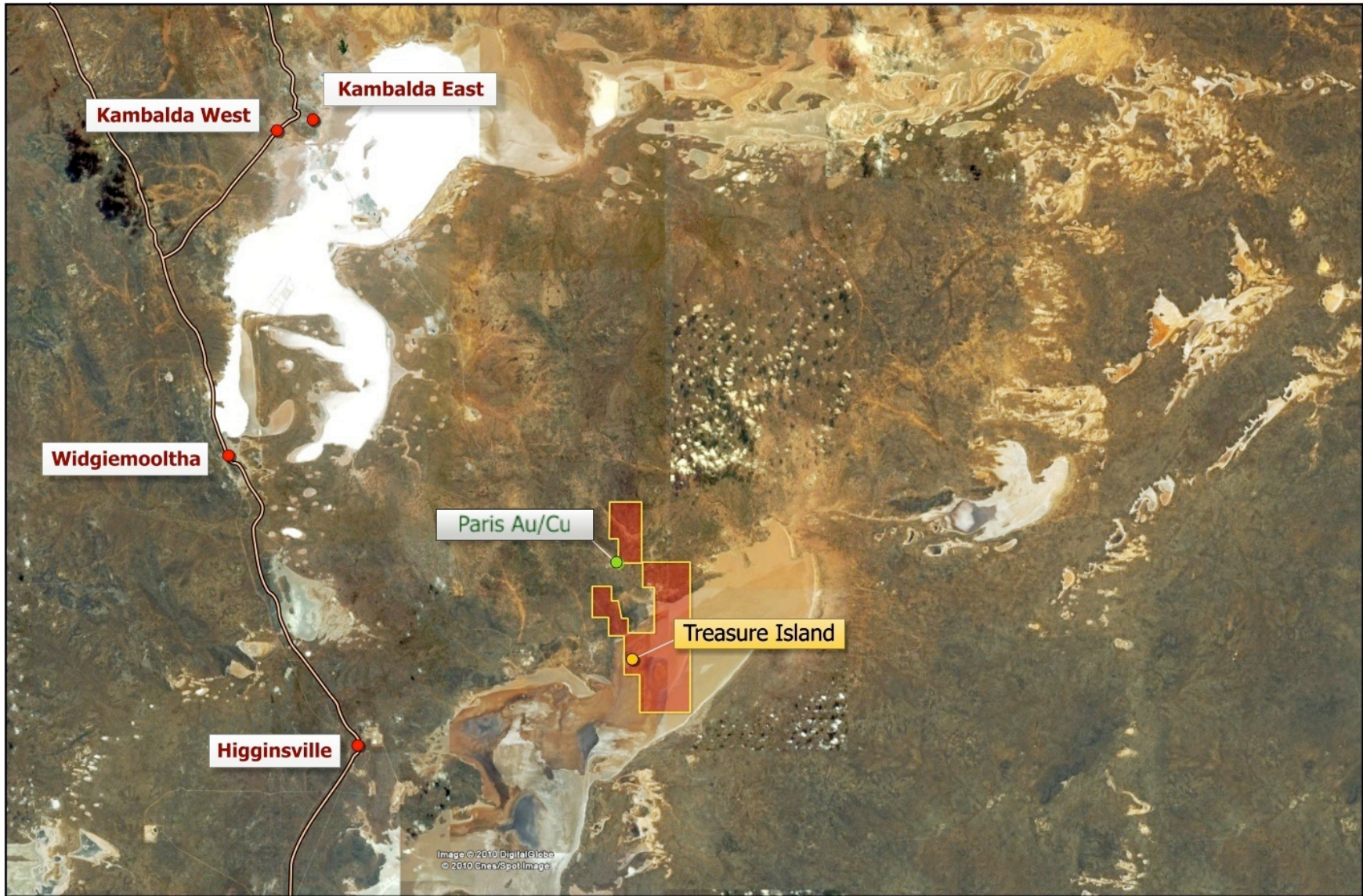
Build Production to +100,000oz in 2011





Production, Profits, Potential
Building a substantial mid-tier producer

Lake Cowan Project – Gold & Copper Exploration



Lake Cowan Project

A World Class Location

- Greenfields exploration in the gold fields
- Gold-copper project on the southern extension of the Boulder-Lefroy Fault system
- A detailed geophysical survey and field work underway to identify drill targets



Three Mile Hill Plant – *A Game-Changer*

- Operating at 1.2 Mtpa
- Enables Focus to unlock full value of all deposits on its tenements
- Strategic location as a largest-capacity treatment facility in Coolgardie region
- Surface stockpile of 40,000 ounces, 1.5 million tonnes at ~ 1.3 g/t

