



COMPANY PRESENTATION
11 September 2011

DISCLAIMER



This presentation does not constitute or form part of any offer for sale or solicitation of any offer to buy or subscribe for any securities in Smash Minerals Corp., nor shall it or any part of it form the basis of or be relied on in connection with or act as any inducement to enter into any contract or commitment whatsoever. No reliance may be placed for any purpose whatsoever on the information or opinions contained in this presentation or on any other document or oral statement or on the completeness accuracy or fairness of any such information and/or opinions. No undertaking, representation, warranty or other assurance express or implied is made or given by or on behalf of Smash Minerals Corp. or any of its directors, employees or advisors, as to the accuracy or completeness of the information or opinions contained in this presentation and, save in the case of fraud, no responsibility or liability is accepted by any of them for any such information or opinions or for any errors, omissions, misstatements, negligence or otherwise contained or referred to in this presentation. The contents of this presentation have not been approved by an authorized person.

OVERVIEW OF SMASH MINERALS



Poised to Repeat:

Smash's all star team made the first major gold discovery, White Gold District, Yukon, in 2008 with Underworld Resources.

Major Upside:

Fully funded, approx. 26.4 M shares outstanding, one of the few to drill in the Yukon this year.

Focus:

Exceptional land package, applying knowledge and experience from nearby Underworld Resources Discovery with drilling to be completed in 2011.



Geologists at Camp



XRF on site analyser

CAPITAL STRUCTURE



| DESCRIPTION | SHARES |
|--|-------------------|
| Issued Common Shares | 23,876,390 |
| Share Purchase Options (\$0.80 / Share Strike Price) | 2,040,000 |
| Share Purchase Options (\$1.20/share strike price) | 474,578 |
| TOTAL – FULLY DILUTED | 26,390,968 |
| CASH ON HAND - \$8,985,000 | |

Ownership:

Insiders and close associates own 3.5 M shares

Major Shareholders:

- Dynamic Funds
- Sprott Asset Management
- Acker Finlay

TEAM



Adrian Fleming, President & Director, is an Australian geologist with 35 years diversified experience in the mining industry, including exploration, project development and operations. Exploration continues to be his passion. He has been a member of teams that made gold discoveries at Porgera, PNG; Big Bell, W.A.; Gross Rosebel, Suriname; Hope Bay, Nunavut and most recently White Gold, Yukon, Canada with Underworld Resources. A Director of Goldminex Resources, Tarsis Resources and Entourage Metals.

Dennis Arne, Principal Consultant – Geochemistry.. Dennis worked closely with Underworld Resources in the White Gold District. He is a principal of Revelation Geoscience.

Phil Smerchanski, Principal Consultant – Geology, specializes in field assessment of targets, target generation and opportunity recognition. He is a principal of Revelation Geoscience.

Colin Brodie, Senior Geologist, has over 30 years of exploration experience in Australia, South America and North America. He has worked extensively on porphyry copper – gold and epithermal gold systems. Colin was member of the Underworld Resources team. He completed preliminary work on the Smash claims in 2010.

David M. Johnson, Principal Consultant – Geophysics. Since 1990, he has explored for gold, base metals and diamonds in Australia, Africa, Asia and Scandinavia.. He is a principal of Revelation Geoscience.

Darryl Cardey, CFO & Director, is a venture capital financier.. He was a co-founder and Director of Underworld Resources. He has extensive corporate finance contacts both in North America and Europe.

Steve Swaffield, Director, the principal of CarbEx Consulting Inc.. He has over 25 years of experience in senior financial advisory and operational roles and as an investment banker. He holds a BA and MA in Engineering Science and an MBA.

Greg Fekete, Director, is a Yukon lawyer with extensive experience in mineral exploration in Canada, Greenland and Southeast Asia. He is a director of Hinterland Metals Inc. and numerous private companies.

Darren Devine, Corporate Advisor, principal of Chelmer Consulting Corp. provides corporate finance and securities consulting services to companies in the resource and energy sectors. He is a founder, director, officer and advisor to a number of private and public companies including Crazy Horse Resources.

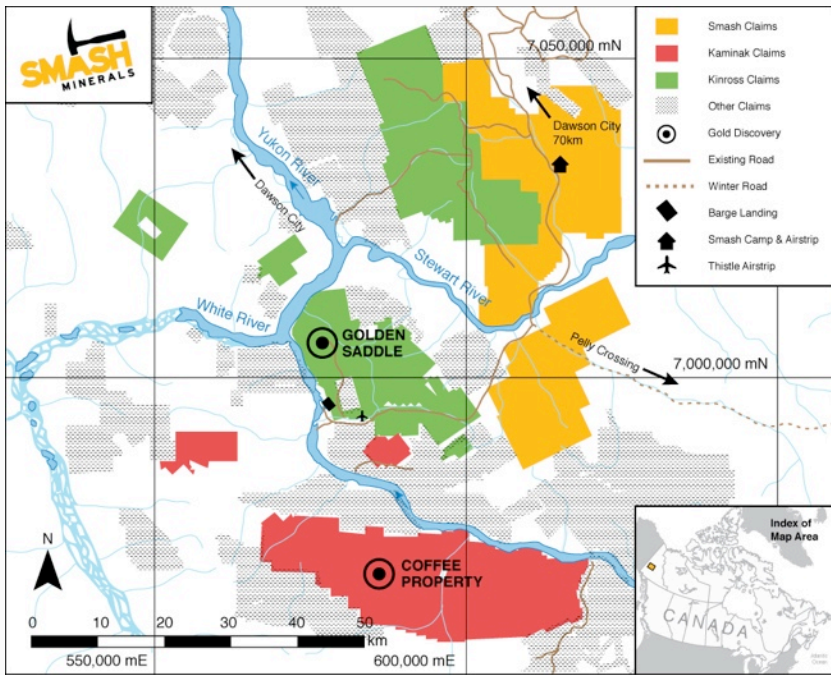
YUKON GOLD RUSHES



The first rush 1898

- The area 90 km south of Dawson City had until early 2000's seen little hard rock exploration.
- Despite it having produced over 100,000 ozs of placer gold since the early 1900's.
- Underworld's drilling in 2008 was the first in this part of the Yukon. No drill holes within 60 km radius!
- There are now over 50 companies actively exploring in the area but none as aggressively as Smash and few companies will drill in 2011.

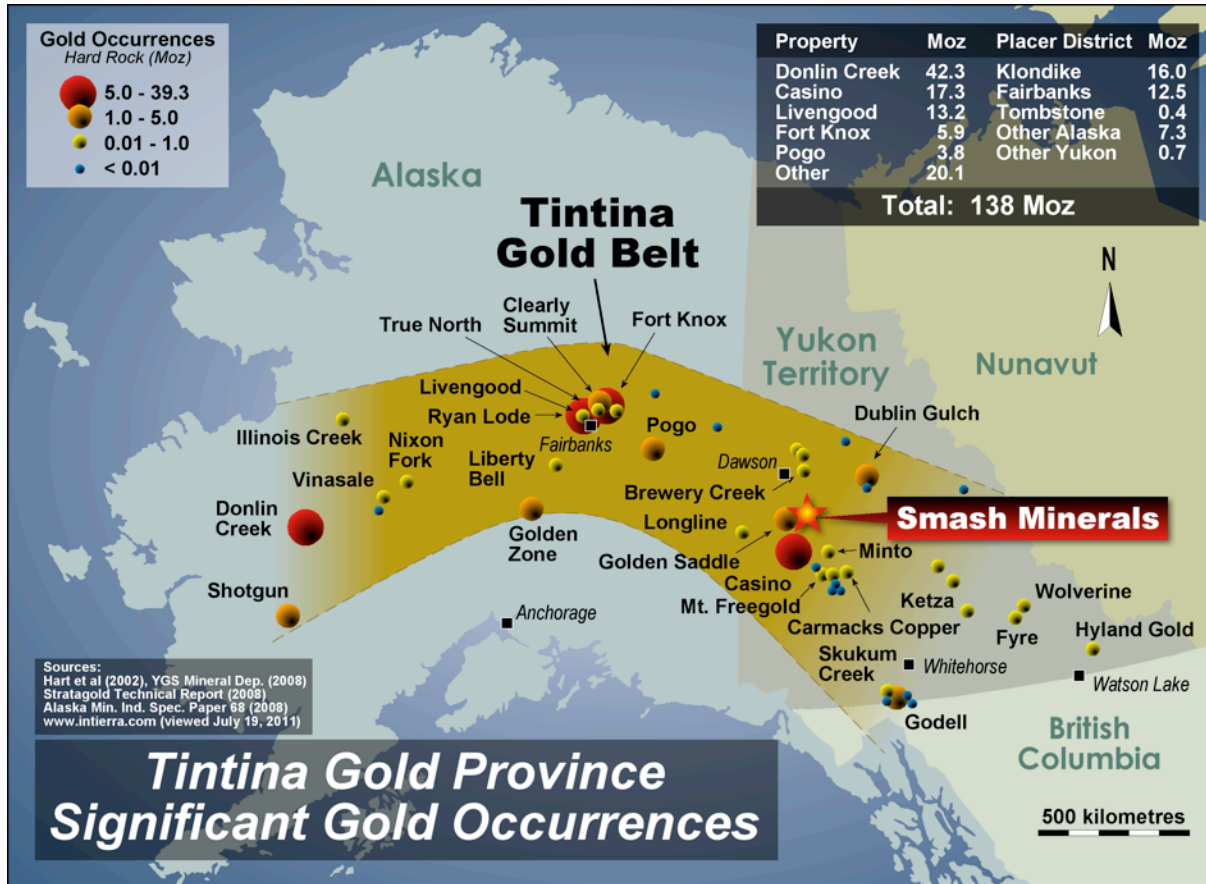
WHITE GOLD DISTRICT



White Gold District, two new hard rock gold discoveries, Golden Saddle and Coffee.

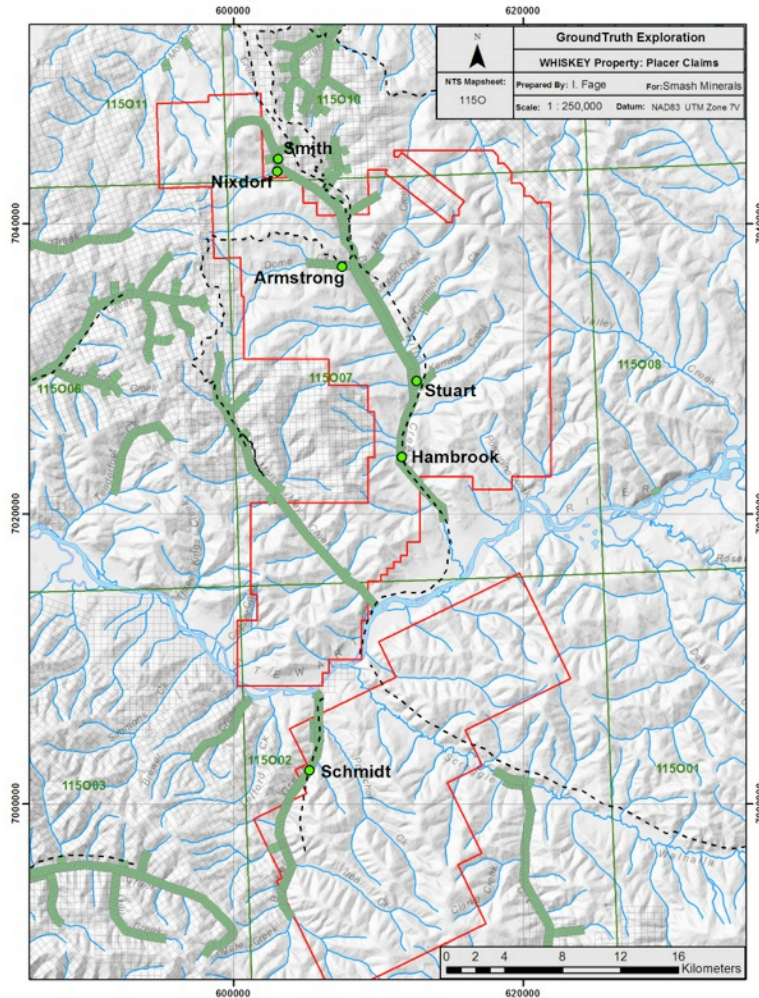
- Smash’s principals from Ryanwood and Underworld Resources made the first gold discovery south of Dawson City in 2008.
- Underworld’s hole 31 in 2009 with 100m of 3 g/t Au started the White Gold District staking rush. Golden Saddle Indicated Resources were 1 M oz at 3.2 g/t Au. Underworld was acquired in a takeover by Kinross Gold in April 2010.
- Kaminak Gold was the second discovery in 2010 at its Coffee Property.
- Prior to Kinross Shawn and Adrian flagged area to the east as highly prospective. After Kinross aggressive staking.
- 2010 soil sampling flagged 10 anomalous areas.
- 2011 exploration program now in drilling stage.

REGIONAL SETTING



- It is surprising that until early 2000's there had been no systematic gold exploration in the White Gold District
- Additional discoveries can be expected in this prolific belt.

PLACER GOLD ENDOWMENT



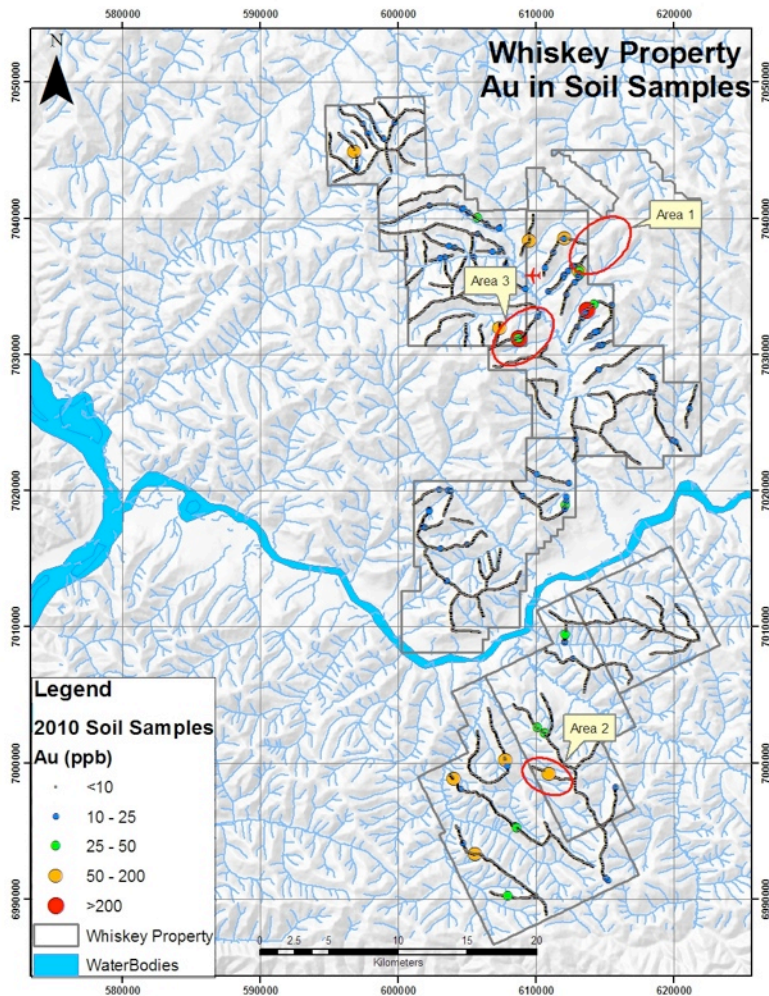
Placer claims and active placer mines

- Extensive placer gold mining has been ongoing here for 100 years.
- There are 6 active placer operations on Smash's property.
- West trending, second order structures localize gold mineralization.



Barker Creek placer gold mining operation

2010 FIELD WORK RESULTS



- In 2010 property wide ridge soil geochemistry program was completed for 7,146 samples.
- 10 areas returned anomalous gold samples.
- Follow up field reconnaissance identified three areas with Golden Saddle style alteration/mineralization.
- High mercury values in soil and rock in one area perhaps indicates new style of mineralization.
- This work confirmed the prospectivity of the area

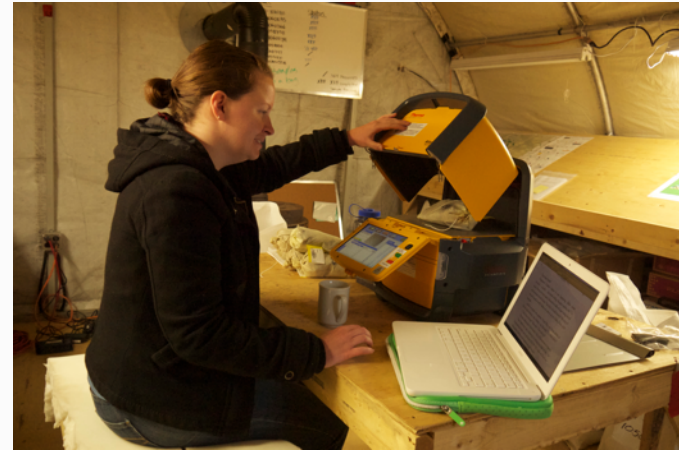
Gold in ridge soil samples, three Target Areas

2011 FIELD WORK



Smash's \$5 million exploration program has the objective of assessing the entire claim block, defining targets and drilling. Work completed includes;

- 14,700 ridge and grid soil samples
- 1,600 rock samples
- 159 stream sediment samples
- 996 geological mapping days
- 10,600 line km helicopter geophysics
- 83 trenches, 2,500 m
- 10,080 on site XRF analysis of soil samples
- core drill program underway

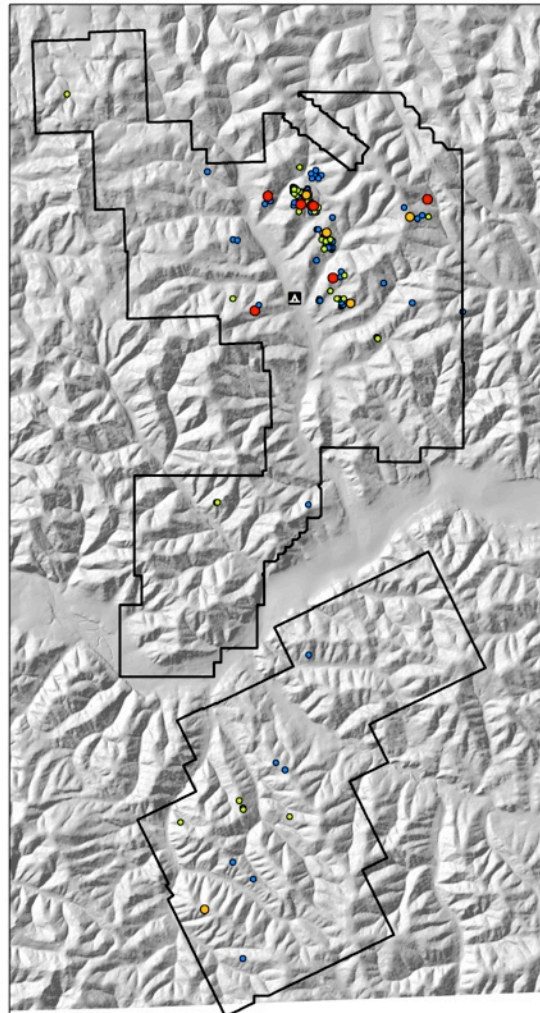


Field based XRF analyser



Helicopter Geophysics

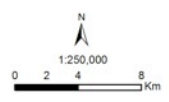
2011 FIELD WORK RESULTS, SOIL GEOCHEMISTRY



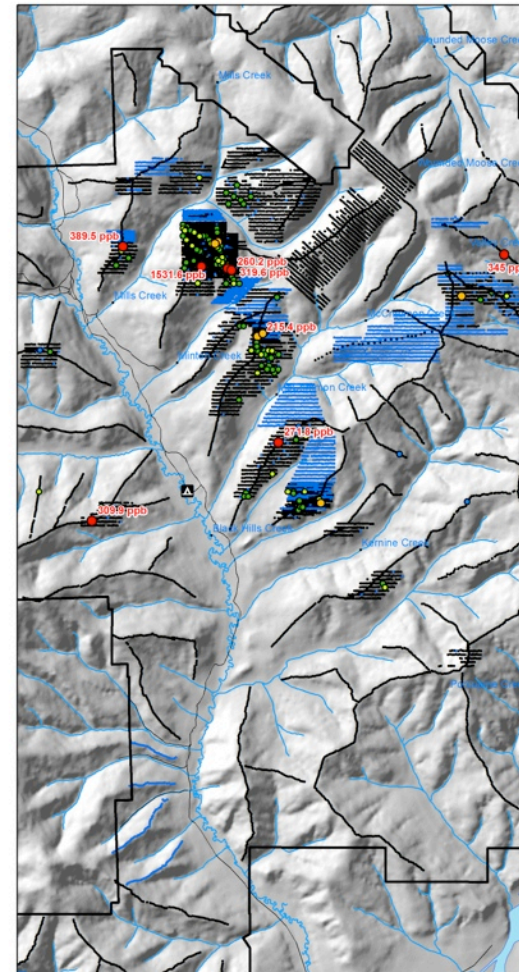
Whiskey Property
- Soil Sample Geochemistry -



- Legend**
- Camp
 - Property Outline
- Anomalous Soil Samples**
- Au_PPb**
- 216 - 1532
 - 101 - 215
 - 51 - 100
 - 25 - 50



Aug 21 2011

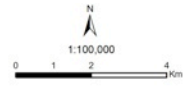


Whiskey Property
- Soil Sample Geochemistry -



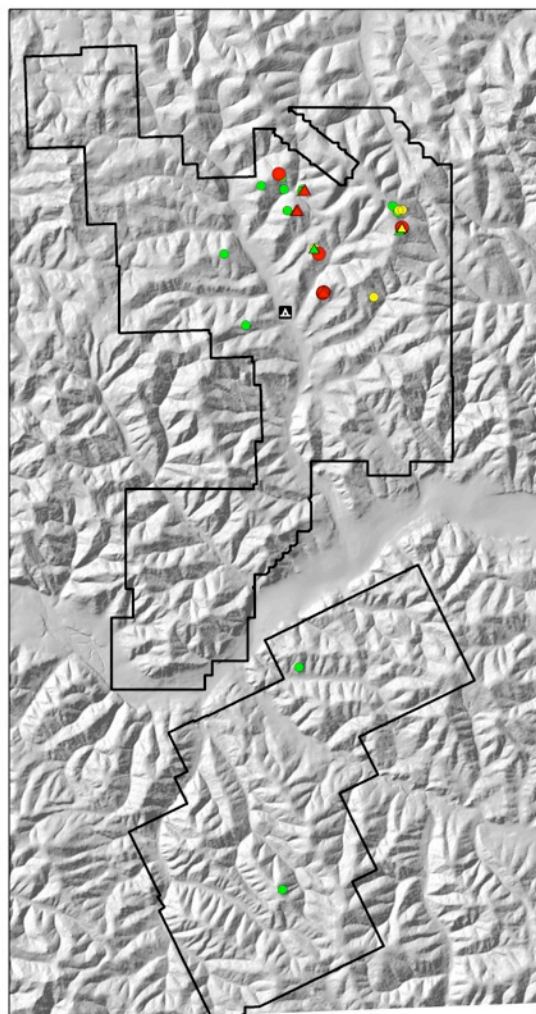
- Legend**
- Camp
 - Property Outline
- Anomalous Soil Samples**
- Au_PPb**
- 216 - 1532
 - 101 - 215
 - 51 - 100
 - 25 - 50

* Au values are posted for samples with >200 ppb Au



Aug 21 2011

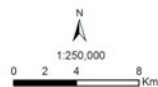
2011 FIELD WORK RESULTS, ROCK GEOCHEMISTRY



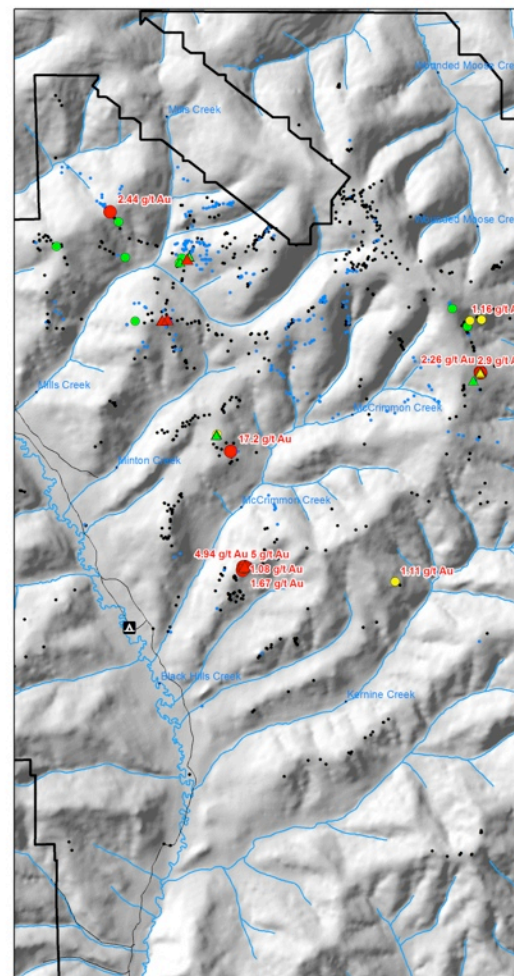
Whiskey Property
- Rock Sample Geochemistry -



- Legend**
- Camp
 - Property Outline
 - Anomalous channel samples**
 - AU_PPB**
 - 501 - 1350
 - 201 - 500
 - 103 - 200
 - Anomalous grab samples**
 - AuPPB_Comb**
 - 1201 - 17200
 - 601 - 1200
 - 103 - 600



Aug 21 2011

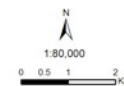


Whiskey Property (Northeast)
- Rock Sample Location
& Geochemistry -



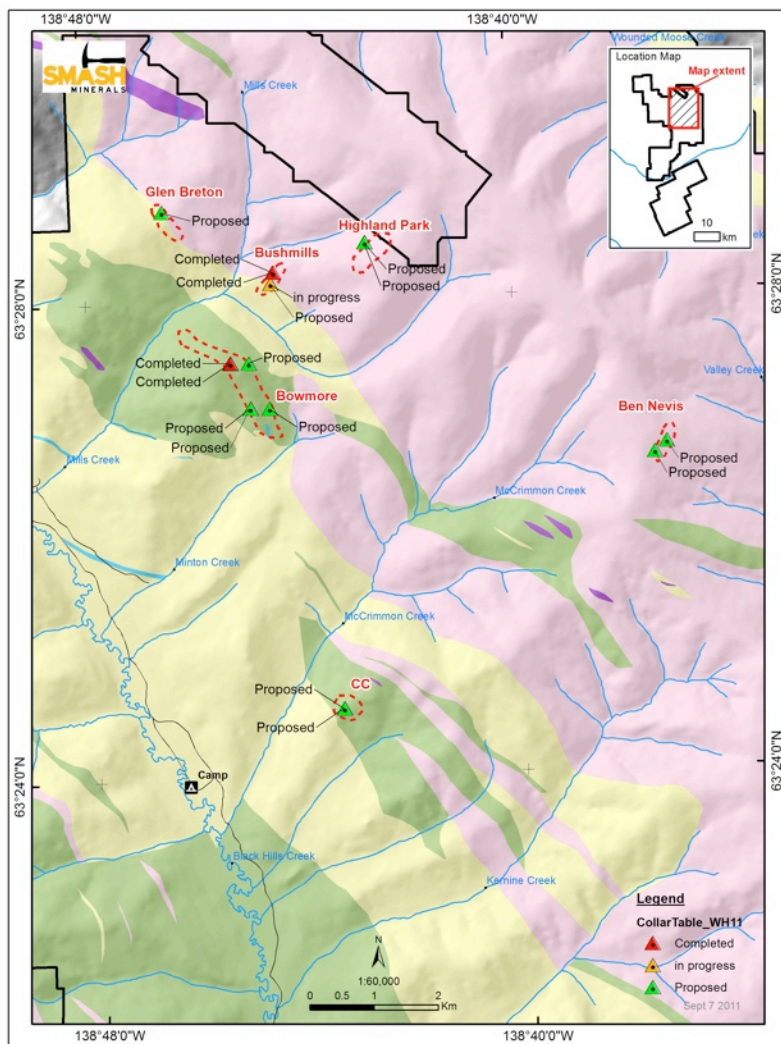
- Legend**
- Camp
 - Property Outline
 - Anomalous channel samples**
 - AU_PPB**
 - 501 - 1350
 - 201 - 500
 - 103 - 200
 - Anomalous grab samples**
 - AuPPB_Comb**
 - 1201 - 17200
 - 601 - 1200
 - 103 - 600
 - Grab samples**
 - results received
 - results pending

* Au values are posted for rock samples with > 1 g/t Au



Aug 21 2011

DRILL TARGETS



A core drill program is currently underway with the objective of testing at least three targets in 2011

Six identified drill targets

Glen Breton: Northwest-trending area of strong silicification and stockwork quartz-sericite-pyrite veining in sericitized felsic orthogneiss. Area is defined by elevated Au and Mo.

Bowmore: Two Km north- to northwest-trending gold soil geochemistry anomaly coincident with magnetic low identified from airborne geophysics.

Bushmills: Northeast-trending silicified zone marked by intense stockwork quartz-sericite-pyrite veins cutting felsic orthogneiss. The siliceous core has strong sericite-limonite alteration and coincident gold and silver in channel samples.

Highland Park: Northeast-trending zone of intensely silicified felsic gneiss and elevated Hg in soils.

Ben Nevis: North-trending quartz-pyrite veins cutting sericitized felsic orthogneiss. Surface grab and trench channel samples show elevated Au, Ag, and Mo.

CC: Gold-bearing quartz veins hosted in metagabbro. Rock grab samples and trench channel samples show strong gold-bismuth association.

YUKON GOLD COMPARABLES



| Company | Ticker | Price | Market Cap* (C\$ Millions) | Enterprise Value* (C\$ Millions) |
|-----------------------------|------------|---------------|----------------------------|----------------------------------|
| Advanced Exploration | | | | |
| ATAC Resources | ATC | \$8.00 | \$768 | \$730 |
| Kaminak Gold | KAM | \$4.00 | \$276 | \$250 |
| Initial Drilling | | | | |
| Golden Predator | GPD | \$1.10 | \$128 | \$108 |
| Silver Quest Resources | SQI | \$1.03 | \$112 | \$95 |
| Northern Tiger Resources | NTR | \$0.40 | \$38 | \$33 |
| Early Exploration | | | | |
| Ryan Gold | RYG | \$1.62 | \$152 | \$135 |
| Ethos Capital | ECL | \$1.10 | \$44 | \$28 |
| Pacific Ridge | PEX | \$0.50 | \$30 | \$26 |
| Smash Minerals | SSH | \$0.94 | \$23 | \$14 |

*Calculated on a basic shares outstanding basis as at Sept 1, 2011

KEY POINTS



- POISED TO REPEAT
- MAJOR UPSIDE
- FOCUS

CONTACT INFORMATION:

Dwane Brosseau
T 604 662 3380
Toll Free 1 855 23SMASH

SSH:TSX.V
www.smashminerals.com
info@smashminerals.com



Drilling at Bushmills target