



Eurasian Minerals™



- **Eurasian Minerals is a prospect generator and royalty company focused on the discovery of gold and copper.**
- **140+ properties on 4 continents**
- **94 properties in partnership with companies such as Newmont, Vale, Freeport-McMoRan, Antofagasta, Inmet, Centerra Gold, Entrée Gold, etc.**



- **JV partner reimburses Eurasian for cost of land acquisition & all exploration, thereby completely de-risking the venture for our shareholders.**
- **We can be exploring 60 properties simultaneously where a conventional could only explore a few, thereby increasing the odds for a major discovery.**
- **We utilize not only our partners \$ but their proprietary technologies and intellectual capital.**
- **Increases odds for exploration success, minimizes dilution and preserves cash.**

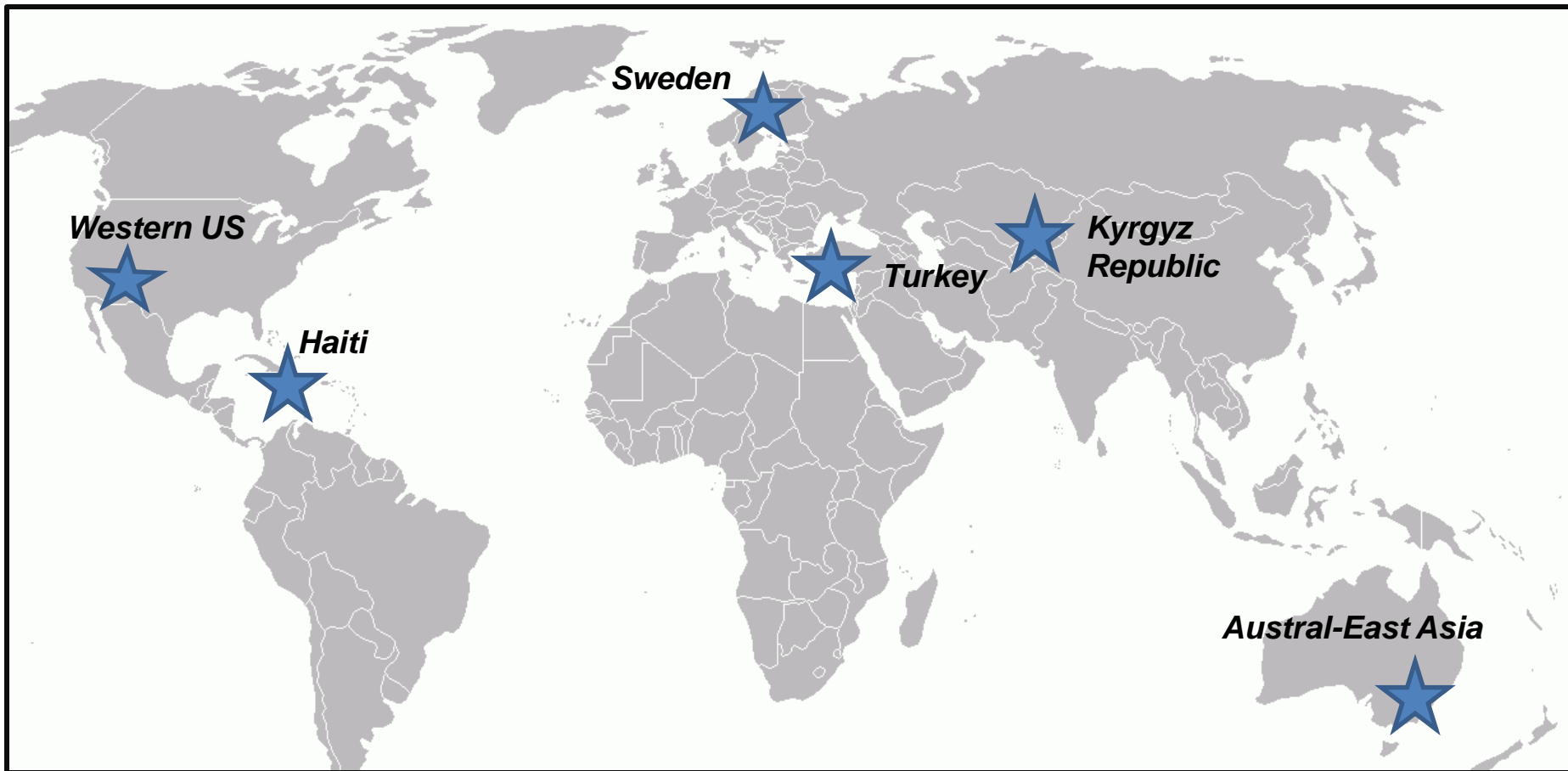


- **In 2012, EMX Joint Venture partners expected to spend \$15 - \$20 million on our properties**
- **EMX will also receive \$1.6 million in cash and share payments this year from partners.**
- **In 2011 EMX had 27,400 m of drilling performed on its properties at a cost of \$4.1 million. EMX funded only \$240k of the total expenditure or 6% of the drilling.**



- **Announced on February 7th, the merger /acquisition of Bullion Monarch Mining which holds 1% gross smelter returns on several of Newmont's operations on the Carlin Trend. This cash flowed Bullion Monarch \$6.2 million in fiscal 2011.**
- **Balya Pb-Zn-Ag royalty property expected to be in production in September. 4% uncapped NSR.**
- **By this time next year Eurasian Minerals will be at least cash flow neutral and likely cash flow positive.**
- **Expecting to receive \$4+ million in royalties in 2012.**





Western US

20 Cu and/ or Au properties with 11 under agreement.

Haiti

6 JV's w/ Newmont. Gold-Copper-Silver discoveries w/ district potential.

Sweden

20 exploration & 2 royalty properties.

Turkey

3 JV's. Balya & Sisorta Royalty Properties headed for production.

Kyrgyz Republic

The Orgatash gold prospect continues to expand. New discovery at Gezart.

Asia-Pacific

Gold property in Australia hosted in massive quartz veins. 2360 km² land package.



- **Strong treasury - \$40+ million in cash coupled with low cash burn rate.**
- **Responsible stewards of the shareholders' investment.**
- **Shares Outstanding: 53 million**
- **Shares Fully Diluted: 71 million**



- **Newmont Mining**
 - **Antofagasta**
 - **Freeport-McMoRan**
 - **International Finance Corp. (World Bank)**
 - **Barrick**
 - **Lundin Mining**
 - **Rick Rule**
 - **Sprott Asset Management**
- 



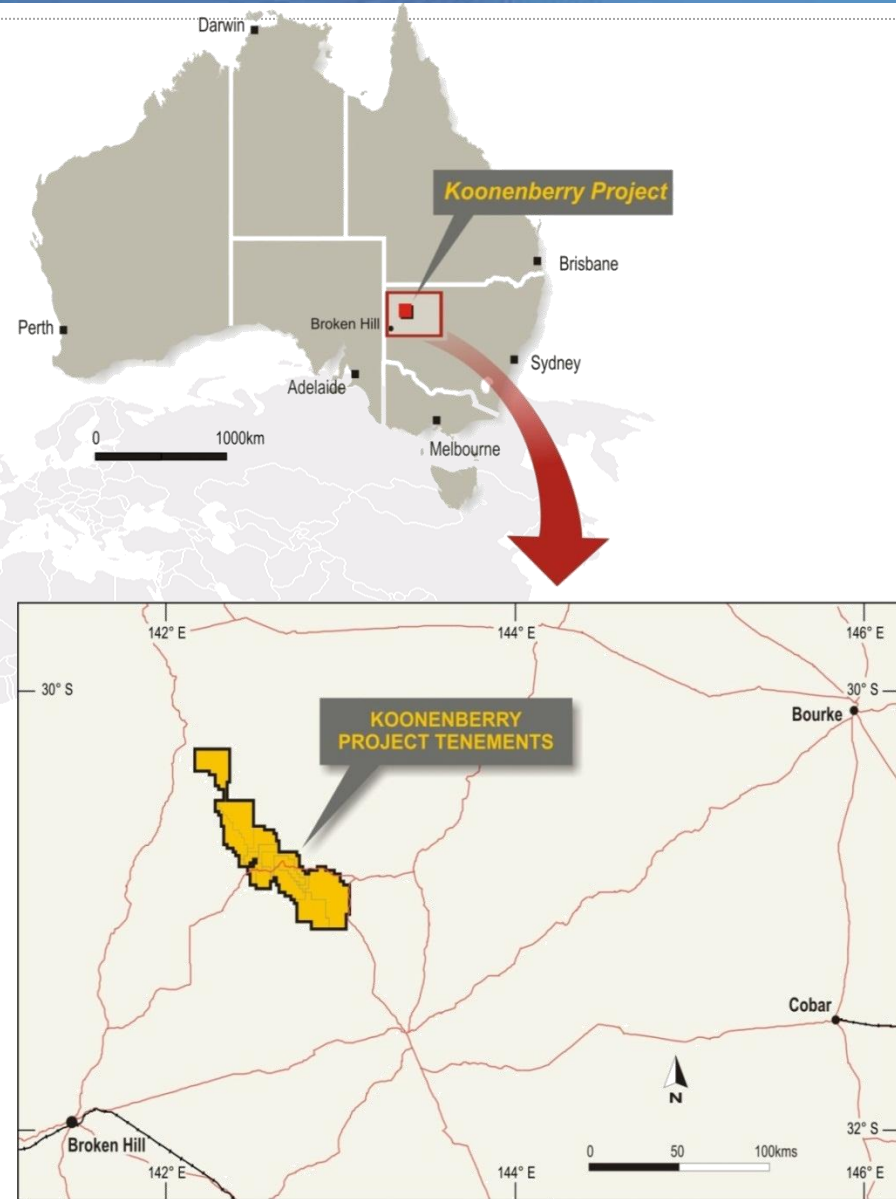
- **The best collection of geologic and management talent for any company within our market capitalization.**

Recent additions:

- **Brian Levet – former Group Executive of Worldwide Exploration for Newmont. Instrumental in the discovery in a number of major deposits.**
- **Heading up royalty acquisition is former President of International Royalty Corp., Paul Zink.**
- **M. Stephen Enders was recently appointed our Executive Chairman of the Board. Former Sr VP of Worldwide Exploration for Newmont Mining and former President of Phelps Dodge Exploration.**

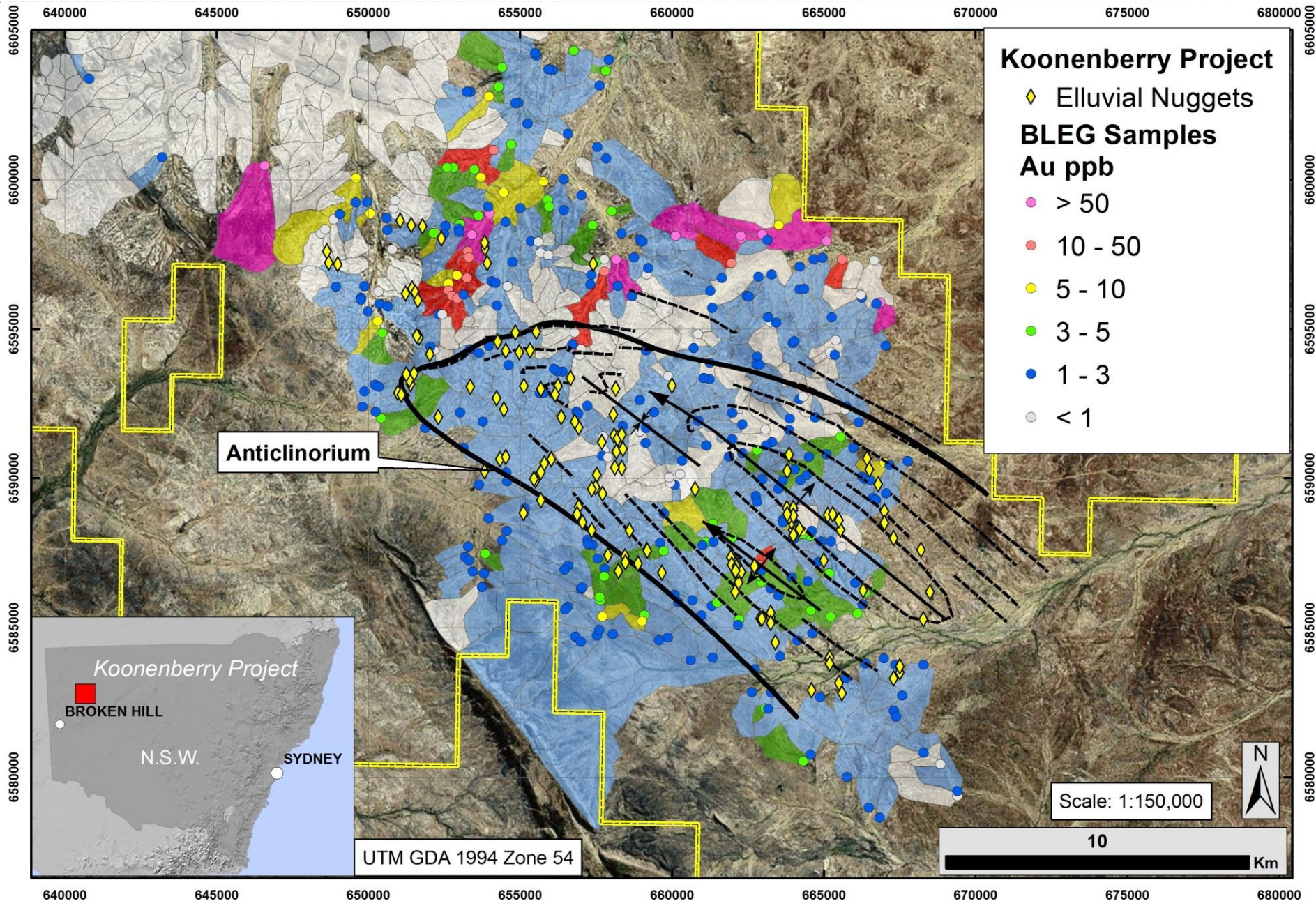


- **New, district-size gold belt under Eurasian's control.**
- **13 granted exploration licenses totaling 2,360 km² land package.**
- **100 kms of strike length along the Koonenberry fault-zone**
- **Gold in outcropping quartz veins**
- **Intrusive related gold systems as well as Victorian-style mineralization**



Koonenberry, Australia

TSX-V: EMX





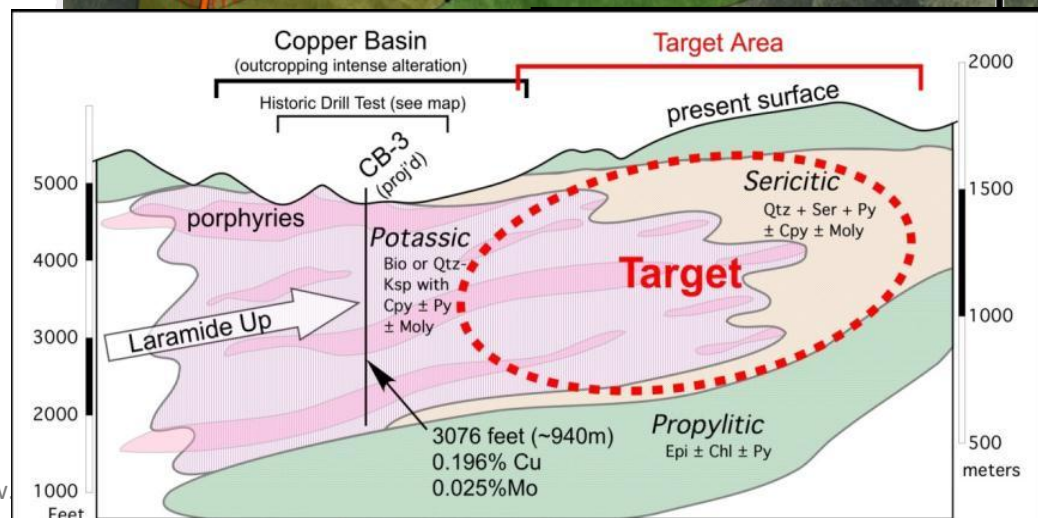
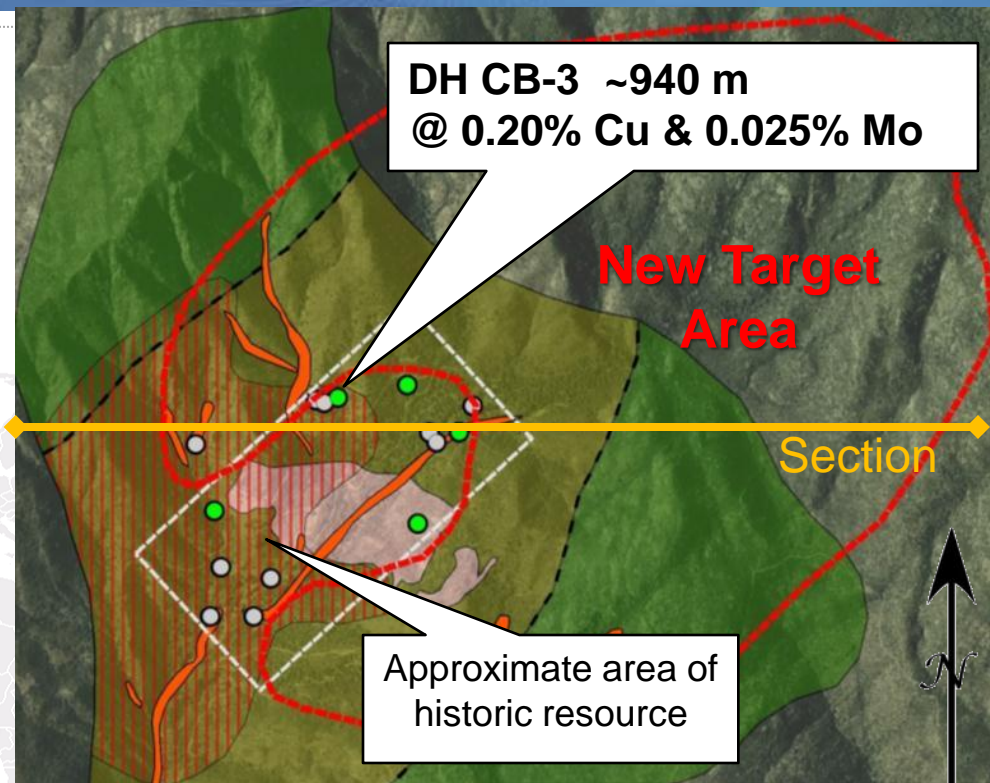
USA – Copper Basin (Arizona)

TSX-V: EMX

- New regional geological work indicates the system has been tilted (*not previously recognized*), leaving significant untested exploration potential

- Only partially drill tested in the 1960-1970's (~ 940m of 0.20% Cu & 0.025% Mo)

- Outcropping porphyry style mineralization, in a remote Arizona location



www

Historic, non-NI 43-101 resource of 5 billion lbs / 2.3 billion kgs of contained Cu equivalent @ 0.25%



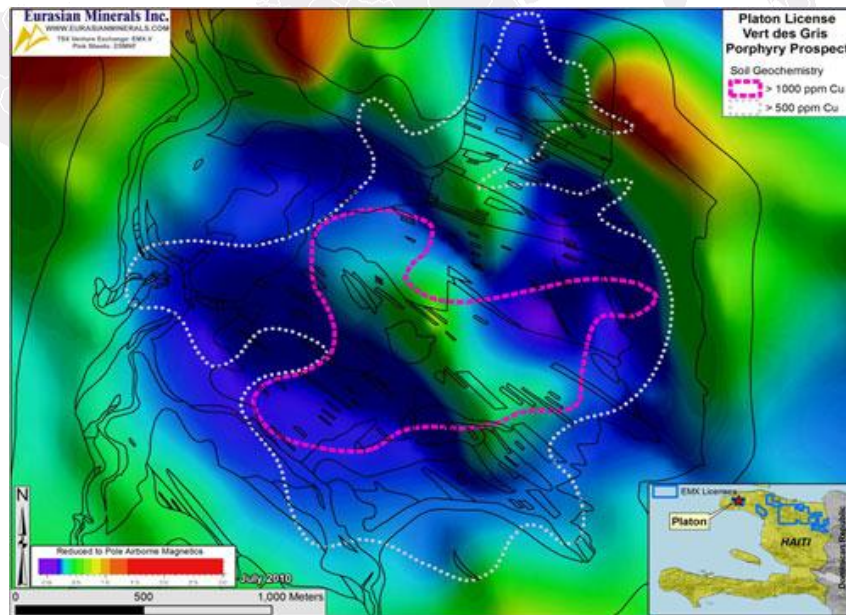
- **12 km² area of gold & silver mineralization with district scale potential.**
- **7 separate & distinct areas of gold & silver mineralization.**
- **2011 drilling has discovered 3 new vein systems.**
- **Hole AKC 36- 62 meters averaging 2.3 g/t gold**
- **Hole AKC 37- 50 meters averaging 3.4 g/t gold**
- **Joint Ventured with Centerra Gold.**



- **Similar geology to the Pueblo Viejo deposit which contains 20+ million oz gold, 120 + oz silver and 420+ million lbs of copper.**
- **Very under-explored terrain with excellent discovery potential.**
- **EMX controls large land position $\approx 2,500 \text{ km}^2$**
- **7 Joint Ventures with Newmont**



- **2 km x 2.5 km geological, geophysical and geo chemical anomaly.**
- **Footprint compares very favorably to Newmont's Batu Hijau.**
- **In August 2010 we closed an unsolicited Private Placement with Newmont for 2 million shares with no warrants @ \$2.20 – a 10% premium to the market price.**
- **Newmont owns 10% of Eurasian shares.**



A JUNIOR COMPANY WITH A MAJOR'S PORTFOLIO

SEVERAL EXCELLENT PROSPECTS

STRONGEST EXPLORATION & MANAGEMENT TEAM FOR OUR SIZE IN THE SECTOR

230+ YEARS OF COLLECTIVE GEOLOGICAL EXPERIENCE AMONG MANAGEMENT

GROWING ROYALTY PORTFOLIO OF CURRENT (PENDING MERGER W/ BULM) AND NEAR TO MIDTERM PRODUCTION POTENTIAL

CREATING VALUE THROUGH DISCOVERY, GROWTH AND ROYALTIES

