

TAUNG GOLD | TAUNG GOLD INTERNATIONAL LIMITED  
壇金礦業有限公司

SEHK Stock Code: 0621

2-4 NOVEMBER 2016



# A WORLD CLASS DEVELOPMENT OPPORTUNITY IN AFRICA'S PREMIER GOLD DESTINATION

Neil Herrick  
Chief Executive Officer  
Precious Metals Summit  
Zurich and London  
[www.taunggold.com](http://www.taunggold.com)

## **Disclaimer**

This presentation, which has been compiled from information provided by the directors of Taung Gold International Limited ("Taung") and from publicly available sources, involves elements of subjective judgment and analysis which may or may not be correct and have not been independently verified.

The information contained in this presentation is also subject to completion, revision, verification and amendment without prior notice and without liability to compensate or reimburse any person.

No representation or warranty, express or implied is or will be given by Taung or its directors, partners, employees or advisors or any other person as to the accuracy, completeness or fairness of this presentation and, so far as permitted by law and except in the case of fraud by the party concerned, no responsibility or liability whatsoever is accepted for the accuracy, completeness or fairness thereof or for any errors, omissions or misstatements (negligent or otherwise) relating thereto.

This presentation includes certain forward-looking statements, estimates, targets, forecasts and projections provided by Taung with respect of its anticipated future performance. Such forward-looking statements, estimates, targets, forecasts and projections reflect significant assumptions and subjective judgments and analysis by Taung's management concerning anticipated results which may or may not prove to be correct and there can be no assurance that any forward-looking statements, estimates, targets, forecasts or projections are attainable or will be realised. Nothing contained in this presentation is, or shall be relied upon as a promise or representation, whether as to the past or the future. Accordingly, (subject as aforesaid) neither Taung nor its directors, partners, employees or advisors nor any other person, shall be liable for any direct, indirect or consequential loss or damage suffered by any person as a result of relying on any forward-looking statement in or omission from this presentation and any such liability is expressly disclaimed. In particular, but without limitation, no representation or warranty is given as to the achievement or reasonableness of, and no reliance should be placed on, any forward-looking estimates, targets, forecasts or projections contained in this presentation (or otherwise provided by or on behalf of Taung with respect to the subject matter of this presentation). In all cases, addressees should conduct their own investigation and analysis of Taung and the information contained in this presentation.

This presentation is for information purposes only and does not constitute an offer to sell or the solicitation of an offer to buy shares in Taung. Further, it does not constitute a recommendation by Taung or any other party to sell or buy shares in Taung or any other securities. All written or oral forward-looking statements attributable to Taung or persons acting on their behalf are qualified in their entirety by this disclaimer.

This presentation has been prepared without reference to your particular investment objectives, financial situation, taxation position and particular needs. It is important that you view this presentation in its entirety. If you are in any doubt in relation to these matters, you should consult your stockbroker, bank manager, solicitor, accountant, taxation adviser or other independent financial adviser.



TAUNG GOLD | TAUNG GOLD INTERNATIONAL LIMITED  
壇金礦業有限公司

SEHK Stock Code: 0621

The only gold developer listed on SEHK



## INTRODUCING TAUNG GOLD

[www.taunggold.com](http://www.taunggold.com)

# Introducing Taung Gold



- Listed on the Stock Exchange of Hong Kong (HKG: 0621)
- 23Moz total resource and 11.4Moz in Probable Reserves
- Three brownfield projects in two well-known gold mining regions:

## South Africa

### Evander

BFS completed  
Advancing towards construction

### Jeanette

Mining Right under application  
PFS being finalized

## Indonesia

### Minex

Metallurgical testwork underway  
Near term cash flow potential

- South African projects have significant existing infrastructure
- Established engagement with strong and reputable Chinese partners for Evander Project:
  - China ENFI Engineering Corporation (ENFI)
  - MCC International Incorporation (MCCI)



# Taung Gold: the gold investment of choice



Very large, high-grade resource	<ul style="list-style-type: none"><li>• 23Moz Total Resource, 11.4Moz in Probable Reserves</li><li>• Probable Reserve head grades &gt;6.5g/t</li></ul>
Brownfield projects	<ul style="list-style-type: none"><li>• SA projects: existing infrastructure in the Witwatersrand Basin</li><li>• Indonesian assets in region previously mined by Newmont</li></ul>
Proven extraction techniques	<ul style="list-style-type: none"><li>• Mining methods used extensively in SA – high degree of confidence</li><li>• Very well understood SA metallurgy – metallurgical recovery of 96%</li></ul>
Attractive economics	<ul style="list-style-type: none"><li>• Anticipated AISC in lowest quartile of cost curve</li><li>• Low capital intensity</li></ul>
Expert management team	<ul style="list-style-type: none"><li>• Experienced board with global reach</li><li>• Executive management with extensive experience and local knowledge</li></ul>
Respected shareholders and partners	<ul style="list-style-type: none"><li>• Largest shareholders based in North America and Hong Kong</li><li>• Excellent Chinese technical partners – ENFI<sup>1</sup> and MCCI<sup>2</sup></li></ul>

## Notes

1. China ENFI Engineering Corporation, a subsidiary of Metallurgical Corporation of China

2. MCC International Incorporation, a subsidiary of Metallurgical Corporation of China

TAUNG GOLD | TAUNG GOLD INTERNATIONAL LIMITED  
壇金礦業有限公司

SEHK Stock Code: 0621



## THE EVANDER PROJECT

[www.taunggold.com](http://www.taunggold.com)



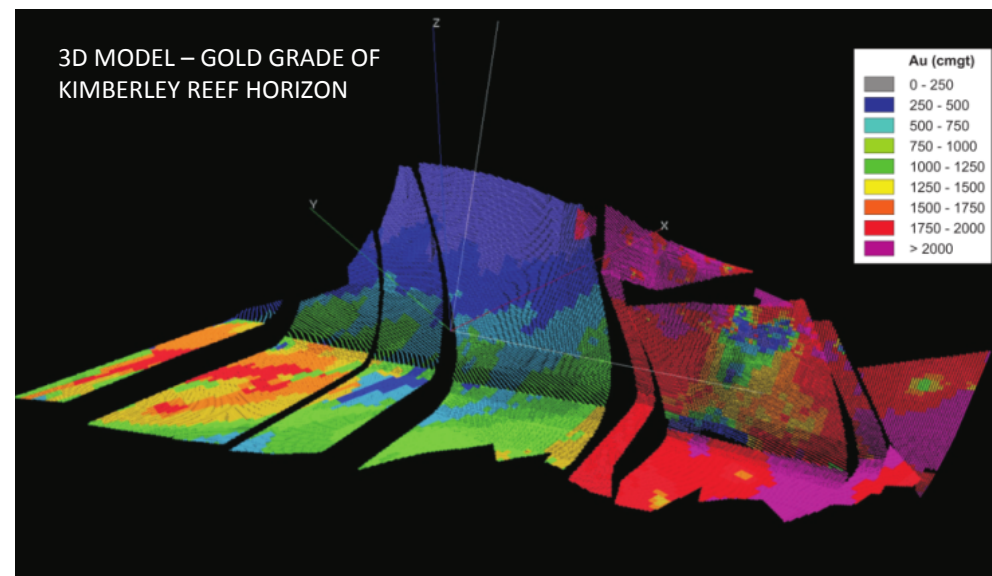
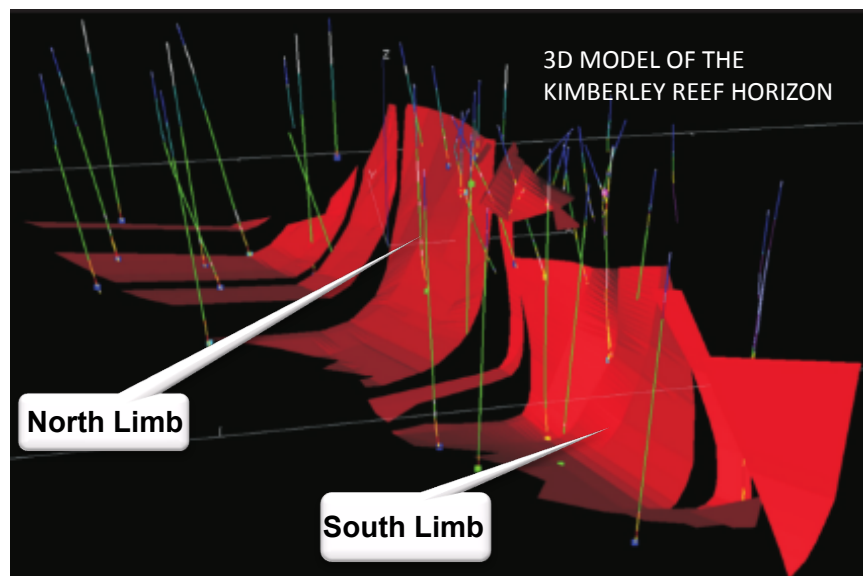
# Evander Project **overview**

- Project mined between 1992 and 1998
- Mining right registered in November 2013
- Bankable Feasibility complete
  - robust economics
  - 20-year life-of-mine with upside potential
- Project scope
  - site establishment and dewatering
  - extend shafts to access resource
  - ore reserve development
  - construct metallurgical plant and TSF
  - commission and operate
- Water disposal agreement in place
- Eskom 22kv 2MVA connection completed
- Permitting well advanced
  - mining right being amended
  - WUL application being prepared



# Evander Project resource and reserve

Classification category	Tonnes (Mt)	Mining grade (g/t)	Gold content (Moz)
Measured Resource	0.11	10.18	0.04
Indicated Resource	19.75	8.47	5.37
<b>Measured and Indicated Resource</b>	<b>19.85</b>	<b>8.47</b>	<b>5.41</b>
Inferred Resource	9.51	7.12	2.18
Total Mineral Resource	29.37	8.04	7.59
<b>Probable Reserve</b>	<b>19.64</b>	<b>6.80</b>	<b>4.29</b>



Substantial high grade M+I resource and probable reserve, with some upside



# Evander Project BFS: production

Key production indicators	Life of mine	Full production per annum
Tons milled	19.64Mt	1.46Mt
Head grade	6.80g/t	7.02g/t
Metallurgical recovery	96%	96%
Recovered grade	6.51g/t	6.75g/t
Gold produced	4.11Moz	0.309Moz
Waste tons	7.11Mt	0.64Mt



# Evander Project BFS: operating cost

Activity	\$/t
Mining	29.3
Metallurgical and TSF	7.2
Labour	35.1
Services and environmental	21.5
Other	8.6
<b>Total</b>	<b>101.7</b>

Unit Costs	Value
Cost per ton milled	\$101.7/t
Cash cost	\$486/oz
AISC	\$583/oz
AIC	\$724/oz

\$/oz costs as per World Gold Council Guidance Note on AISC and AIC Costs – 27 June 2013

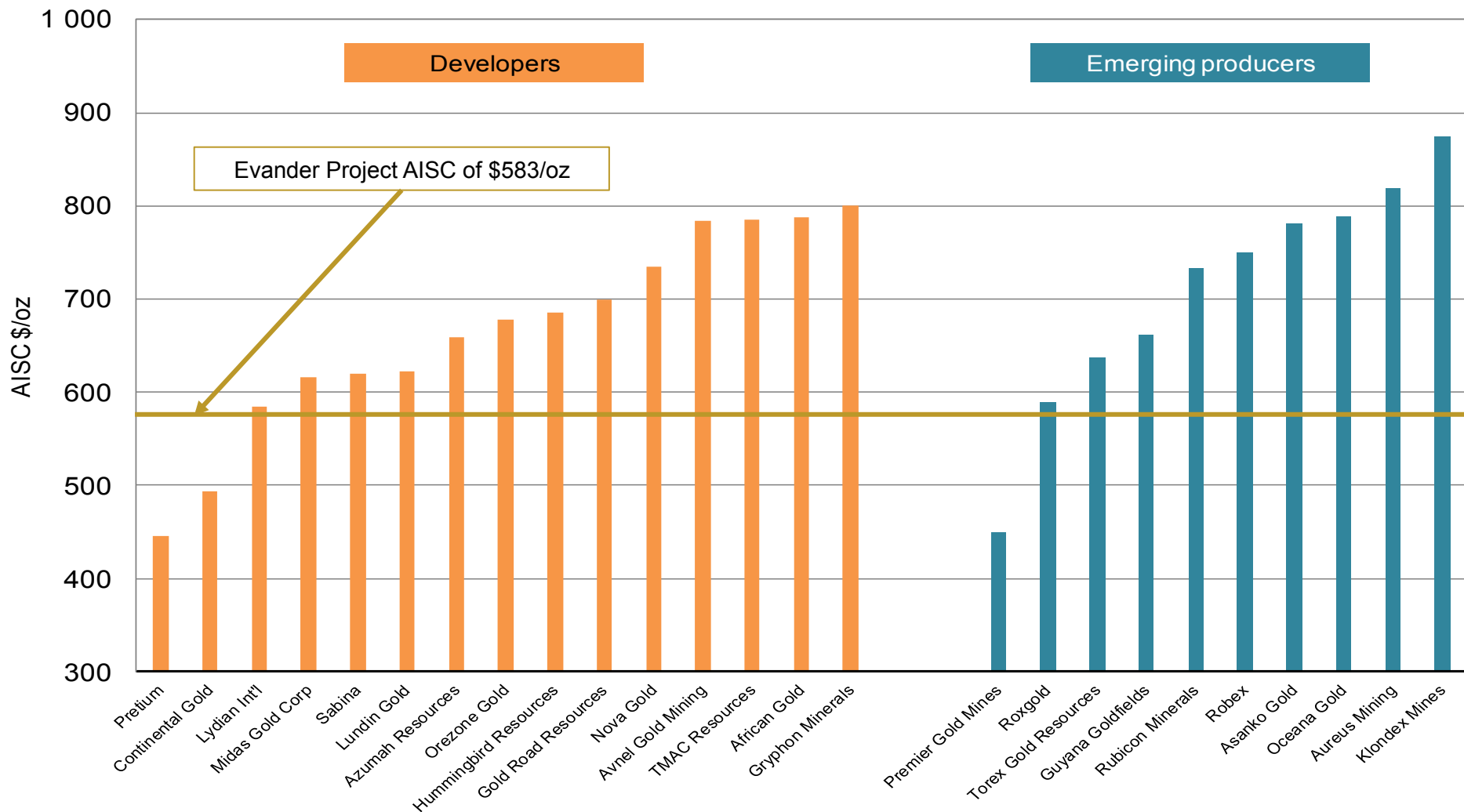
Basis of operating costs used in the BFS as of 29 February 2016:

1. Zero based costing using supplier quotations and industry benchmarked consumption factors for all consumables & supplies
2. OEM quotations for equipment based on new equipment
3. Manpower costed using prevailing salary conditions in the SA gold mining sector with benchmarked productivity factors



# Few peers have AISC < \$600/oz

All-in sustaining cost benchmarking



Source: Company presentations

AISC are typically US\$600-800/oz for gold developers

However, Evander's AISC is expected to be lower than \$600/oz

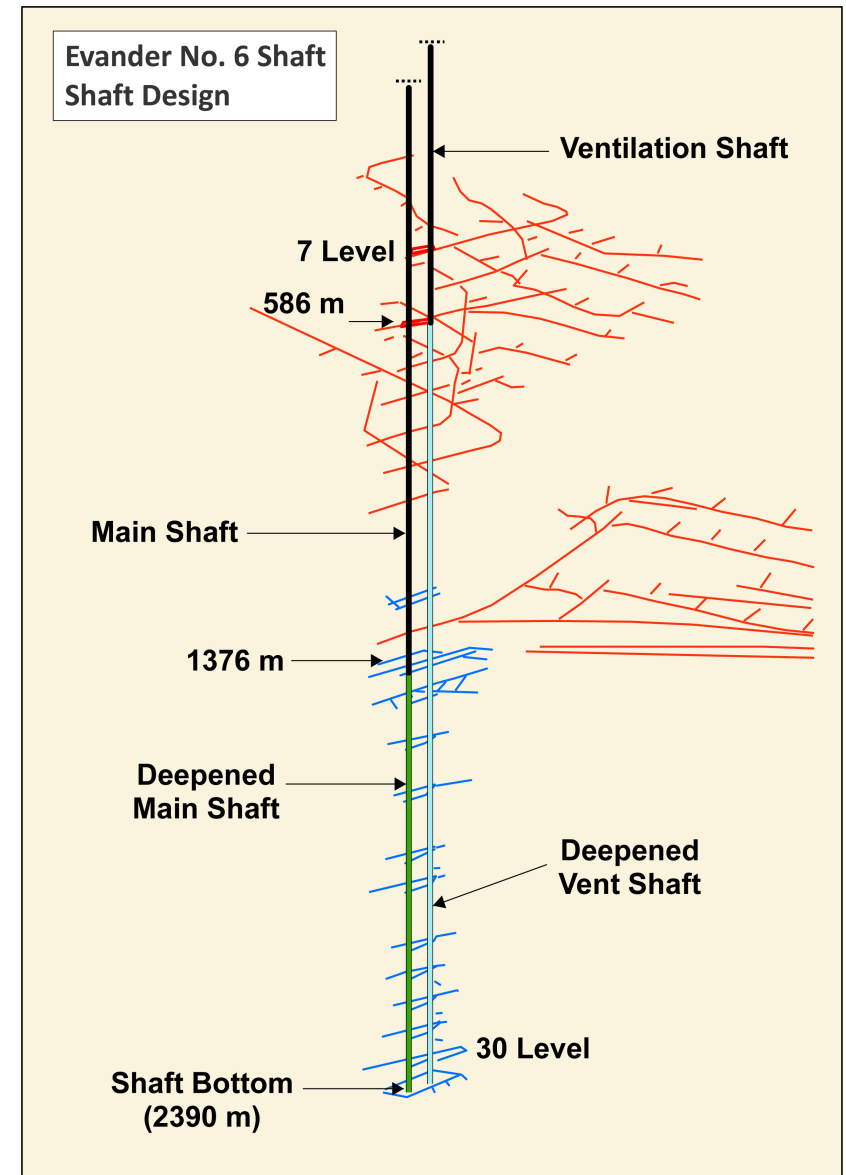
# Evander Project BFS: capital

TAUNG GOLD

Initial Capital Cost	\$m
Shaft rehabilitation and sinking	368.3
Development to reef	10.0
Metallurgical plant and TSF	55.5
Ventilation and refrigeration	24.9
Electrical power	26.4
Other	68.0
Owner's cost	7.4
Capitalised revenue	-3.1
<b>Sub-Total</b>	<b>557.4</b>
Contingency	21.9
<b>Total</b>	<b>579.3</b>

Total project capital is \$714.7m including:

1. Additional contingency of \$28.3m
2. Additional development of \$100.4m
3. Additional other of \$6.8m



Existing infrastructure results in significantly reduced capital



# Evander Project BFS: economic results

Indicator	Value
Gold produced	4.11Moz
Initial capital cost estimate	\$579.3m
Total capital estimate	\$714.7m
Capital efficiency	\$2 696/oz
After-tax NPV <sup>5%</sup>	\$724.8m
After-tax IRR	17.6%
Payback	3.6 years
Cash cost	\$486/oz
Profit margin	57.5%
AISC	\$583/oz

## Sensitivity to gold price

Gold price (\$/oz)	After-tax NPV <sup>5%</sup> (\$m)	After-tax IRR (%)
1 000	390.7	12.2
(Base) 1 290	724.9	17.6
1 500	979.9	20.8
2 000	1 598.1	26.9

## Sensitivity to discount rate

Discount rate (%)	After-tax NPV (\$m)
(Base) 5	724.9
7.2	471.2
10	258.5

### Assumptions used in the BFS:

1. Gold price of ZAR580 638/kg – US\$1 290/oz and an exchange rate of US\$1.00 = ZAR14.00.
2. Capital estimate accuracy of ±10%.
3. Payback calculated from date of first production.
4. Mineral Royalty calculated based on revenue generated using a sliding scale formula with a minimum royalty of 0.5% and a maximum of 5%.
5. Tax calculated on mining profits after capital and other input costs have been recuperated. The maximum rate of taxation is 34% and tax is zero if the profit margin is less than 5%.
6. A 12% Capital Allowance for post 1990 gold mines is added to the unredeemed capital at the beginning of each financial year, provided that the mine is not in commercial production.

# Evander Project **permitting**

- Mining Right registered in November 2013
  - Section 102 application submitted to update and amend:
    - Environmental Management Plan
    - Social and Labour Plan
    - Mining Works Program
- Environmental Authorisation for dewatering surface pipeline already approved
  - Dewatering Water Use Licence (“WUL”) application submitted in September 2016
- Application for Integrated WUL being prepared for total project
- Finalizing surface right acquisitions and servitudes
  - Tailings Storage Facility and associated pipelines
  - waste rock dump
- National power utility (“Eskom”)
  - 22kv 2MVA line installed and operational
  - pending confirmation for 88kv 20MVA supply to be available by Q1 2018
  - 132kv 68MVA supply required in Q2 2020

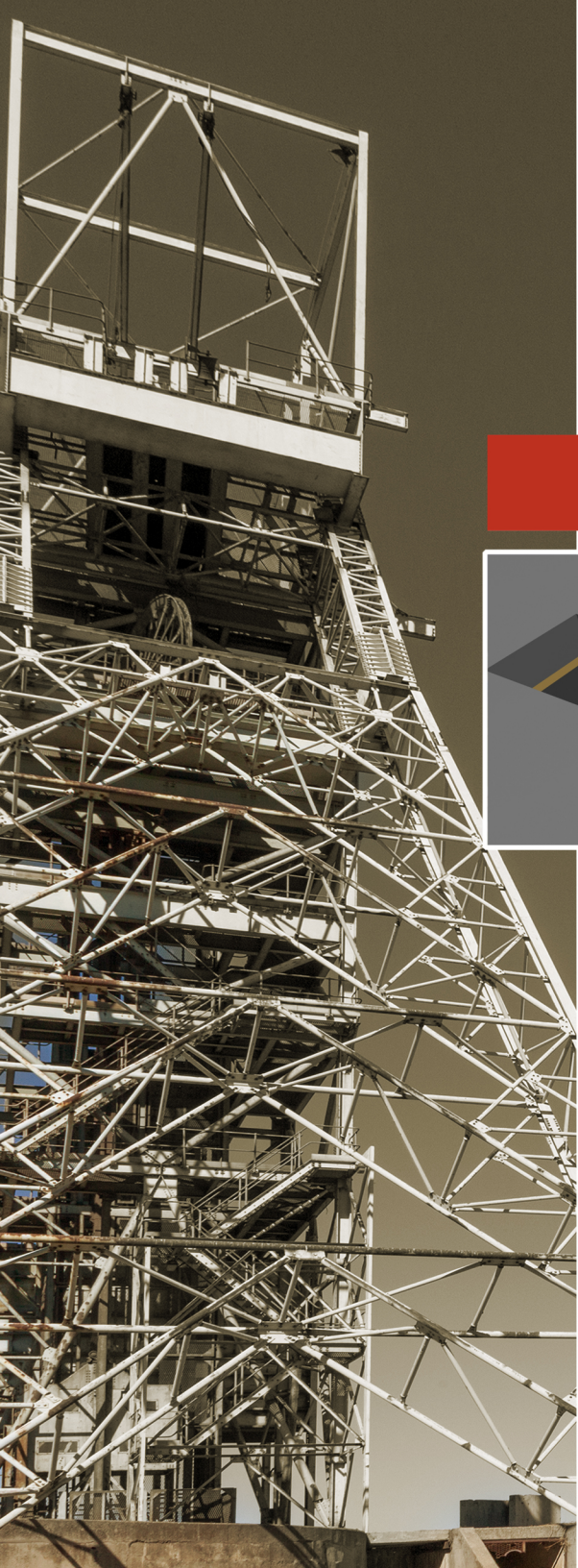
# Evander Project ENFI & MCCI

TAUNG GOLD

- Technical Consultancy Agreement executed with ENFI in May 2014
  - ENFI review of draft Evander Project BFS
  - opportunity to reduce capital through procurement, productivity
- Framework Agreement executed with MCCI in 2014
  - co-operate towards agreement to construct Evander Project
  - contract value to be “based” on ENFI capital estimate
- FIDIC Employer Requirements document being finalized
  - scope of work
  - work breakdown structure
  - roles and responsibilities
- Technical and design DD by end of October 2016
- Drafting of Design and Build Contract in progress
- MCCI to assist with financing through PRC banks

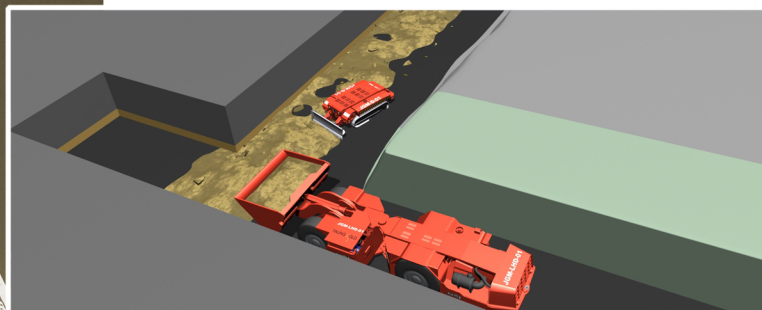






TAUNG GOLD | TAUNG GOLD INTERNATIONAL LIMITED  
壇金礦業有限公司

SEHK Stock Code: 0621

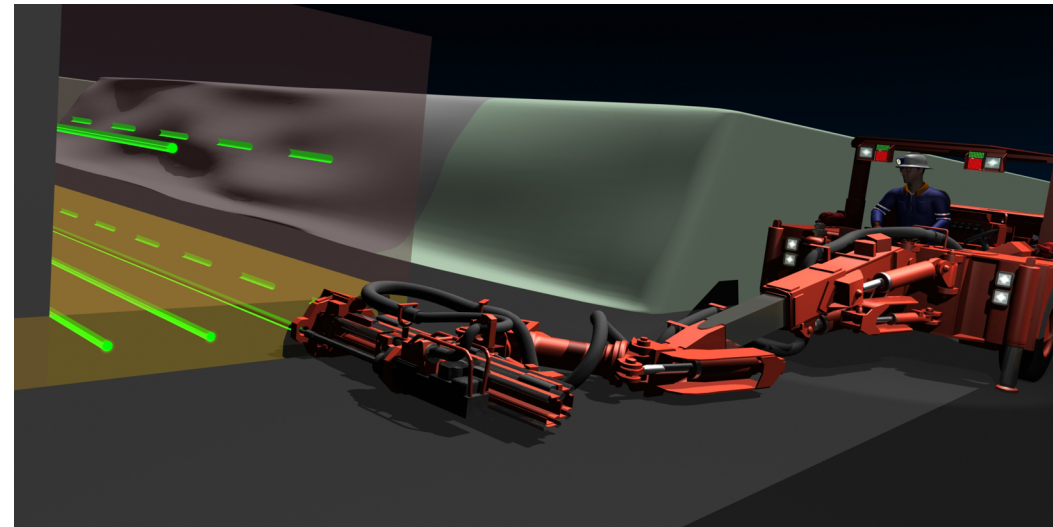
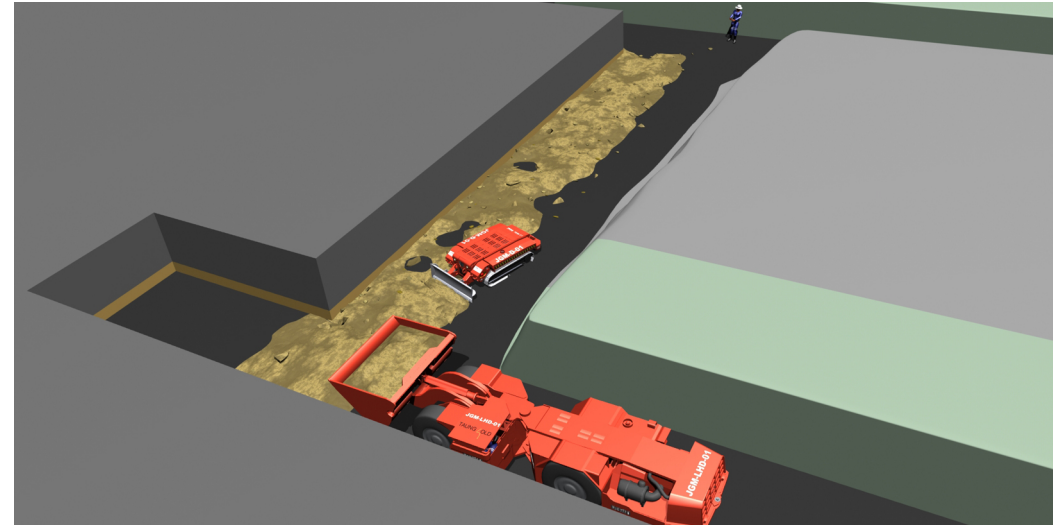


## THE JEANETTE PROJECT

[www.taunggold.com](http://www.taunggold.com)

# Jeanette Project **overview**

- New high-grade, mechanised project
- Existing shaft to be deepened to 2 300m
  - 9.4Moz M+I Resource
  - 7.1Moz Probable Reserve
  - 11.21g/t recovered grade
  - low \$/oz cost potential
  - 400koz pa peak production
- Two shafts to be sunk for men, material and rock
- Dedicated processing facility
  - established technology with 96% RF
- Permitting well-advanced
  - mining right application submitted in May 2015, grant expected in H1 2017
- PFS review being completed
- BFS to commence after grant of mining right



# Jeanette Project resource and reserve



Classification category	Tonnes (Mt)	Channel grade (g/t)	Gold content (Moz)
Measured Resource	-	-	-
Indicated Resource (Black Chert Facies – Basal Reef)	13.10	22.41	9.44
<b>Measured and Indicated Resource</b>	<b>13.10</b>	<b>22.41</b>	<b>9.44</b>
Inferred Resource (Black Chert Facies – Basal Reef)	0.84	17.63	0.48
Inferred Resource (Overlap Facies – Basal Reef)	2.49	8.03	0.64
Inferred Resource (A Reef)	30.08	4.86	4.70
Total Inferred Resource	33.41	5.42	5.81
Total Mineral Resource	46.51	10.20	15.26

Classification category	Tonnes (Mt)	Head grade (g/t)	Gold content (Moz)
<b>Probable Reserve</b>	<b>19.21</b>	<b>11.52</b>	<b>7.12</b>



TAUNG GOLD | TAUNG GOLD INTERNATIONAL LIMITED  
壇金礦業有限公司

SEHK Stock Code: 0621



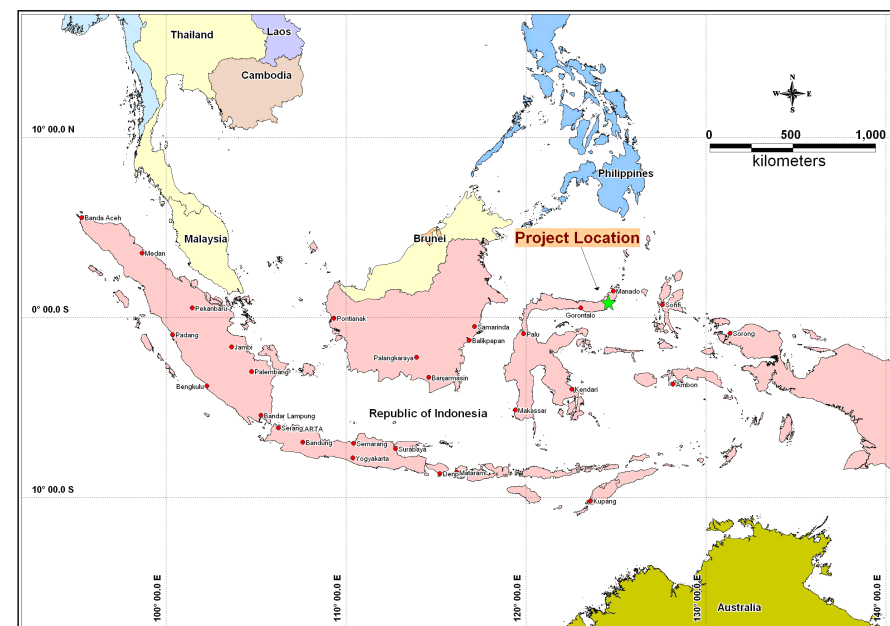
**INDONESIA**

[www.taunggold.com](http://www.taunggold.com)

# Minex: North Sulawesi, Indonesia



- July 2015 acquisition of Minex saw Taung acquire two Indonesian assets:
  - 95% interest in PT Bolmong Timur Primanusa Resources
  - 75% interest in PT Rihendy Tri Jaya subject to completion of conversion of its legal status to permit direct foreign ownership
- Assets in a well-established gold mining region, previously explored, partially mined by Newmont
- Short-term production and cashflow potential
- Minex may form platform for growth in South East Asia, given region's high exploration potential



Classification category	Tonnes (kt)	Resource grade (g/t)	Gold content (koz)
Indicated Resource – Eastern Zone	923.81	2.82	83.62
Inferred Resource – Eastern Zone	723.36	2.59	60.14
Inferred Resource – Western Zone	87.73	3.06	8.62
<b>Total Mineral Resource</b>	<b>1 734.90</b>	<b>2.73</b>	<b>152.37</b>

Potential for significant uplift in resource





## CONCLUSION



# Conclusion

- Substantial high-grade gold endowment in world-renowned gold mining jurisdictions
- Brownfield development projects significantly lower risk and less expensive than greenfield
- Strong financial position – \$25m in cash, no debt
- Strong board with global reach
- Management with extensive experience, local knowledge
- Engagement with MCCI evolving towards Design and Build Contract with financing support for Evander
- Permitting for Evander well-advanced
- Eskom situation rapidly improving



# Attractive valuations for world-class assets



## Pre-production developers

Company	Location	Total resource M, I & I (Moz)	Valuation EV/resource (\$/oz)
1 Gold Standard Ventures	USA, Nevada	1.4	337.6
2 TMAC Resources	USA, Canada	5.9	184.6
3 Pretium	Canada	13.6	132.7
4 Dalradian Resources	Northern Ireland	3.5	81.6
5 Novagold	USA, Alaska	45.0	60.3
6 Gold Road Resources	Western Australia	5.6	57.7
7 Lundin Gold	Ecuador	9.8	48.9
8 Midas Gold Corp.	USA, Idaho	5.4	46.5
9 Corvus Gold	USA, Nevada	1.5	41.6
10 Continental Gold	Colombia	9.0	40.5
11 Sabina	Canada	7.2	28.0
12 Gold Quest	Dominican Republic	2.5	27.9
13 Avnel Gold Mining	Mali	2.9	24.4
14 Xtra-Gold Resources	Ghana	0.4	22.0
15 Orezone Gold	Burkina Faso	3.8	20.7
16 Helio Resources	Tanzania, Namibia	0.3	17.3
17 Gryphon Minerals	Burkina Faso	3.7	11.9
18 Lydian International	Armenia	5.0	9.3
19 Taung Gold International	South Africa, Indonesia	23.0	9.0
20 Gabriel Resources	Romania	18.6	8.9
21 African Gold	Mali	2.4	8.3
22 Legend Gold	Mali	0.3	5.7
23 Azumah Resources	Ghana	2.0	4.9
24 International Tower Hill	USA, Alaska	20.1	4.1
25 Hummingbird Resources	Mali, Liberia	6.0	3.9
26 Castle Minerals	Ghana	0.4	1.9
<b>Average</b>		<b>47.7</b>	

## Emerging producers

Company	Location	Total resource M, I & I (Moz)	Valuation EV/resource (\$/oz)
1 Klondex Mines	USA, Nevada, Canada, Manitoba	1.2	567.2
2 Roxgold	Burkina Faso	1.1	351.9
3 Torex Gold Resources	Mexico	5.4	265.5
4 Premier Gold Mines	Canada	6.0	213.7
5 Guyana Goldfields	Guyana	8.3	111.4
6 Robex	Mali	0.4	80.6
7 Asanko Gold	Ghana	7.9	87.0
8 Oceana Gold	USA, NZ, Philippines	1.7	67.3
9 Aureus Mining	Liberia, Cameroon	2.8	34.4
11 Rubicon Minerals	Canada, Ontario	6.0	6.4
<b>Average</b>		<b>178.5</b>	

Source: TGIL own analysis based on company reports and share prices as at 3 October 2016

TGIL has world-class assets but is relatively unknown in the market





## APPENDICES



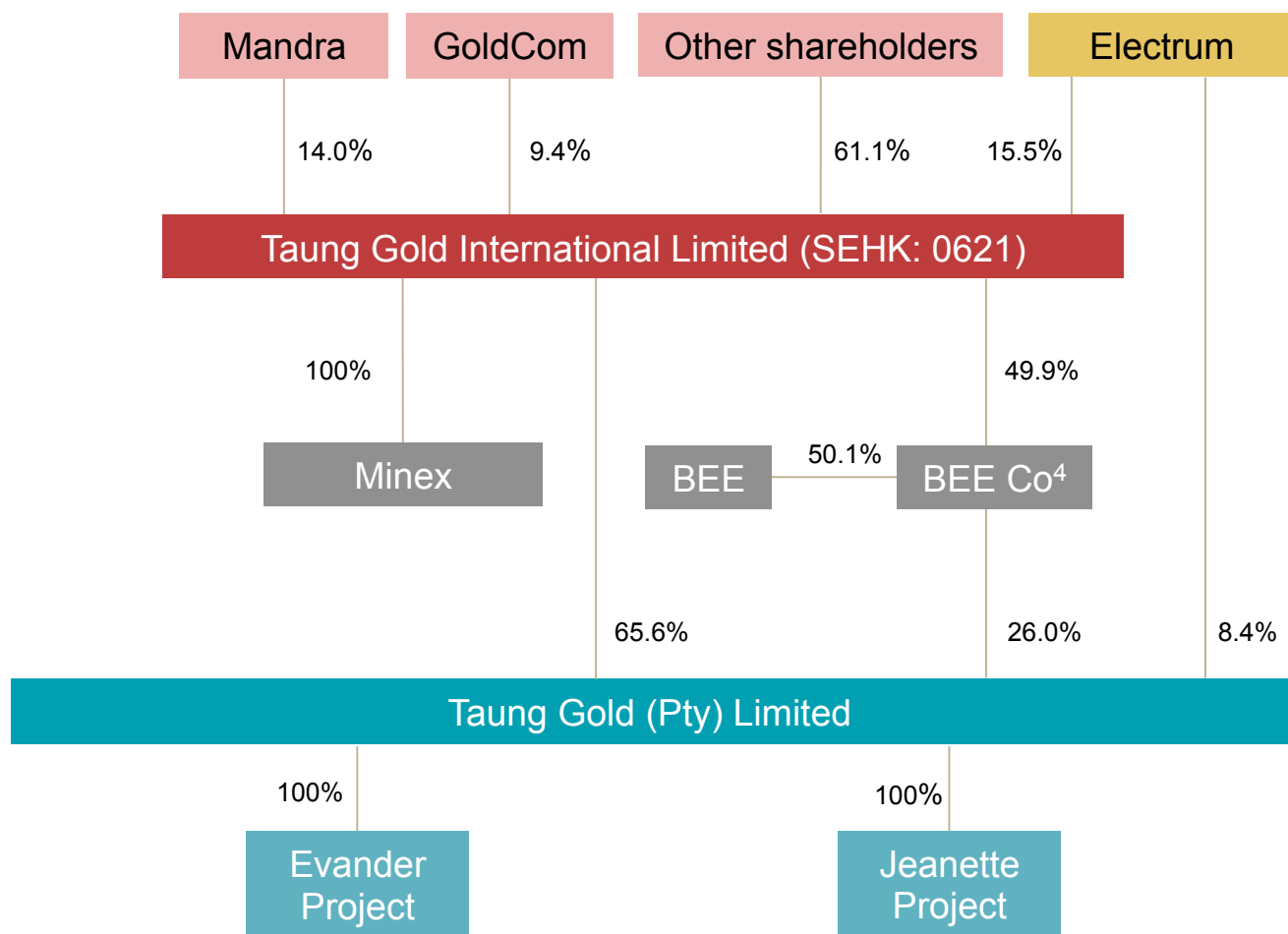
# South Africa

- Stable and maturing constitutional democracy with dependable judicial system
- Leading and enabling minerals legislative framework that works
- Strong tradition of gold mining dating back more than 130 years
- World-class expertise in geosciences, mining, engineering, metallurgy, etc.
- Well-developed infrastructure in gold mining areas
- Rapidly improving electricity situation
- Sophisticated financial, banking systems
- Global transport links, excellent logistics systems
- World-class IT, communication infrastructure

## **For post-1990 gold mines:**

- Attractive capital allowance that recognizes the cost and time involved to build new gold mines

# Corporate structure and ownership



## Corporate information

Shares in issue	14.87bn
Share price <sup>1</sup>	HK\$0.122
Market capitalisation	US\$237m
Net cash <sup>2</sup>	US\$25m

TGIL	%
Electrum Strategic Exploration	15.5
Mandra Materials	10.9
Gold Commercial Services <sup>3</sup>	9.4
Woo Foong Hong	2.9
Mandra ESOP	0.2
<b>Sub-total</b>	<b>38.9</b>
Public	61.1
<b>Total</b>	<b>100.0</b>

### Notes

1. Share price as at close of business on 24 October 2016
2. Net cash as at 31 July 2016
3. Gold Commercial Services (GoldCom) holds TGIL shares on behalf of SA shareholders (SASH), who exercised put options and sold their TGL shares, through GoldCom, to TGIL
4. BEE Co is Sephaku Gold Holdings (Pty) Limited (24.02%) and Taung Gold EPP (Pty) Limited (1.98%)

TGIL has a total interest of 78.57% in TGL

# Directors and management



## Directors

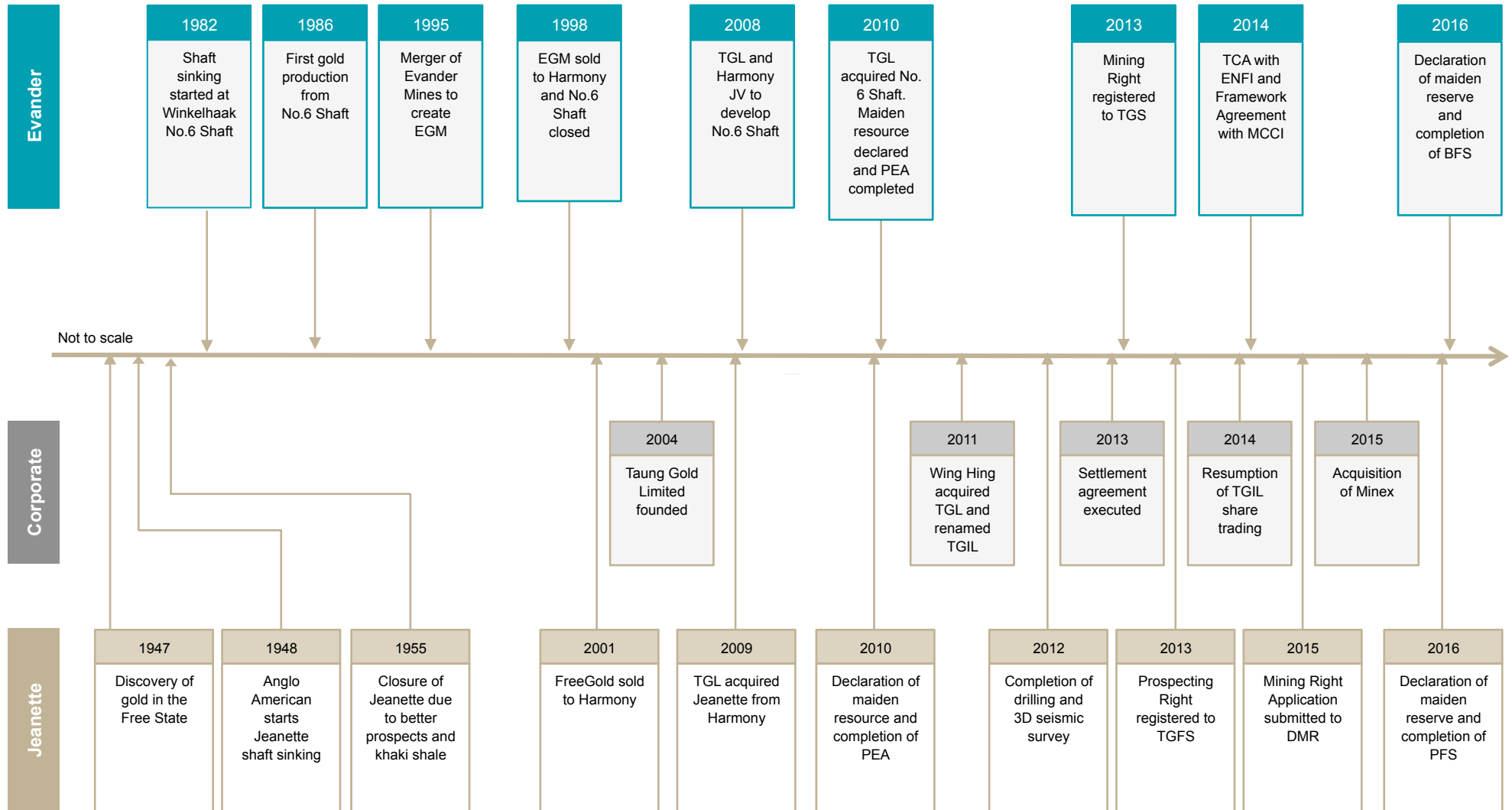
Rudolph de Bruin	<ul style="list-style-type: none"> <li>• Co-Chairman, Executive Director, LLB</li> <li>• Visionary, co-founder of TGL</li> </ul>
Li Hok Yin	<ul style="list-style-type: none"> <li>• Co-Chairman, Executive Director; B Eng</li> <li>• Businessman, investment manager</li> </ul>
Neil Herrick	<ul style="list-style-type: none"> <li>• CEO; B Eng Hons Mining, Pr. Eng.</li> <li>• 28 years' industry experience, &gt;23 years in gold</li> </ul>
Igor Levental	<ul style="list-style-type: none"> <li>• ED; BSc Eng, MBA, &gt;30 years experience</li> <li>• President of Electrum Group of Companies</li> </ul>
Ms. Cheung Pak Sum	<ul style="list-style-type: none"> <li>• Executive Director</li> <li>• HR/administration manager</li> </ul>
Phen Chun Shing	<ul style="list-style-type: none"> <li>• Non-Executive Director, BDeg in Bus &amp; Mar</li> <li>• Investment/corporate banking professional</li> </ul>
Chui Man Lung	<ul style="list-style-type: none"> <li>• Independent Non-Executive Director, BSSc, ICA</li> <li>• Director of Cen-1 Partners</li> </ul>
Li Kam Chung	<ul style="list-style-type: none"> <li>• Independent Non-Executive Director</li> <li>• Director of Zhidao International Holdings</li> </ul>
Tsui Pang	<ul style="list-style-type: none"> <li>• GM of Chang Yang Mining Ltd,</li> <li>• BA Arts and Design in Education</li> </ul>

## Management

Neil Herrick	<ul style="list-style-type: none"> <li>• CEO; B Eng Hons Mining, Pr. Eng.</li> <li>• 28 years' industry experience, &gt;23 years in gold</li> </ul>
Tung Yee Shing	<ul style="list-style-type: none"> <li>• CFO; BSSc Econ. &amp; MBA, HKICPA, ACCA</li> <li>• Chairman of Zhidao International Holdings</li> </ul>
Steven Steyn	<ul style="list-style-type: none"> <li>• CFO TGL; B Com Hons Accounting,</li> <li>• Chartered Accountant</li> </ul>
Peter Warring	<ul style="list-style-type: none"> <li>• Executive - Commercial</li> <li>• BA, LLB, HND Labour Law</li> </ul>
Ms. Annelise Barradale	<ul style="list-style-type: none"> <li>• Executive - Legal</li> <li>• LLB (UK &amp; RSA)</li> </ul>
Jacques du Plessis	<ul style="list-style-type: none"> <li>• Executive - Mining &amp; Projects</li> <li>• BSc Mining, MBA</li> </ul>
Andre du Plessis	<ul style="list-style-type: none"> <li>• Executive - Mineral Resources</li> <li>• BSc Geology &amp; Soil Science, GDE</li> </ul>



# Company and project history



# Notes

TAUNG  OLD

# Notes

TAUNG  OLD



# Notes

TAUNG  OLD

## Contact details

Neil Herrick, CEO

**Tel:** +27 (0)82 807 4632

**E-mail:** [neilh@taunggold.com](mailto:neilh@taunggold.com)

[www.taunggold.com](http://www.taunggold.com)

Andrew Hayes

**Tel:** +44 7932 040630

**E-mail:** [andrew@taunggold.com](mailto:andrew@taunggold.com)