



KTN – TSX.V

SILVER ASSET DEVELOPMENT NEW DISCOVERIES CONSOLIDATION



PROMONTORIO



LA NEGRA



LA CIGARRA



FORWARD LOOKING STATEMENTS

FORWARD LOOKING STATEMENTS

This presentation may contain “forward-looking statements” with the meaning of Canadian securities legislation. These statements can be identified by the use of words such as “expected”, “may”, “will” or similar terms.

Forward-looking statements are necessarily based upon a number of factors and assumptions that, while considered reasonable by Kootenay as of the date of such statements, are inherently subject to significant business, economic and competitive uncertainties and contingencies. Many factors, known and unknown, could cause actual results to be materially different from those expressed or implied by such forward-looking statements. Readers are cautioned not to place undue reliance on these forward-looking statements, which speak only as of the date made. Except as otherwise required by law, Kootenay expressly disclaims any obligation or undertaking to release publicly any updates or revisions to any such statements to reflect any change in Kootenay’s expectations or any change in events, conditions or circumstances on which any such statement is based.

Cautionary Note to US Investors: This presentation may contain information about adjacent properties on which we have no right to explore or mine. We advise U.S. investors that the SEC’s mining guidelines strictly prohibit information of this type in documents filed with the SEC. U.S. investors are cautioned that mineral deposits on adjacent properties are not indicative of mineral deposits on our properties. This presentation may contain forward-looking statements including but not limited to comments regarding the timing and content of upcoming work programs, geological interpretations, receipt of property titles, potential mineral recovery processes, etc. Forward-looking statements address future events and conditions and therefore involve inherent risks and uncertainties. Actual results may differ materially from those currently anticipated in such statements.

QUALIFIED PERSON STATEMENT

The Kootenay technical information in this presentation has been prepared in accordance with the Canadian regulatory requirements set out in National Instrument 43-101 (Standards of Disclosure for Mineral Projects) and reviewed on behalf Kootenay by James McDonald, P.Geo, President, CEO & Director for Kootenay, a Qualified Person.

CAUTION TO U.S. INVESTORS CONCERNING MEASURED, INDICATED or INFERRED RESOURCES

We advise U.S. investors that while the terms “measured resources”, “indicated resources” and “inferred resources” are recognized and required by Canadian regulations, the U.S. Securities and Exchange Commission does not recognize these terms. U.S. investors are cautioned not to assume that any part or all of the material in these categories will be converted into reserves. It should not be assumed that any part of an inferred mineral resource will ever be upgraded to a higher category.

INVESTMENT HIGHLIGHTS

LARGE DIVERSIFIED RESOURCE BASE

- +144 Moz AgEq M&I with 35Moz Ag Eq Inf. – provides strong leverage to silver price

CAPITAL STRUCTURE

- \$7.25M cash to execute business plan over next 12 to 18 months
- Strategic shareholders: Pan American, Coeur, Agnico, Gold 2000, Sprott

PATH TO PRODUCTION – FUTURE CASH FLOW

- Promontorio & La Negra optioned to Pan American Silver – Carried to Production Interest

DISCOVERY UPSIDE

- Creating value with the drill bit on highly prospective green field targets
- Aggressive drilling and development plan underway at La Cigarra & La Negra
- Discovery through multiple joint ventures partners with PROSPECT GENERATOR PORTFOLIO

PLATFORM FOR AGGRESSIVE GROWTH

- Continued pursuit of other acquisition/ consolidation opportunities

MILESTONES - PAST 36 MONTHS

2013 Q2 - UPDATED RESOURCE CALCULATION ON PROMONTORIO - 92Moz AgEq in M&I categories with 24.3Moz AgEq INF.

2014 Q3 - DRILLING CONFIRMS 2nd NEW SIGNIFICANT SILVER DISCOVERY ON PROMONTORIO MINERAL BELT – (La Negra Silver Discovery)

2015 Q1 - ACQUIRES 52 Moz Ag M+I and 11 Moz Ag Inf. - Merger with Northair Silver; Creating A Leading Mexican Silver Consolidator

2016 Q1 - PATHWAY TO PRODUCTION – Options Promontorio Mineral Belt to Pan American; KTN retains 25 % CARRIED TO PRODUCTION INTEREST

2016 Q2 - ACQUIRES 2.5% NSR from Coeur Capital on La Cigarra Project

2016 Q3 - Pan American Begins 3,400m Drill Program on La Negra

2016 Q3 - CLOSES C\$6M in Financings – Includes Participation by Pan American to maintain 10% Interest

2016 Q3 - INITIATES 3,000m Drill Program at La Cigarra Silver Project

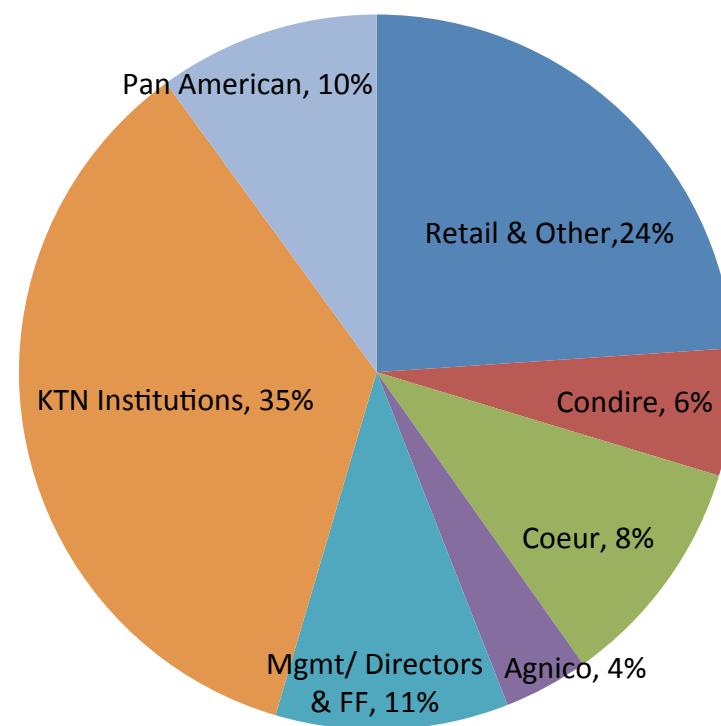
GOALS - NEXT 18 MONTHS

- RESOURCE EXPANSION
 - Drilling underway at La Cigarra and La Negra – Results Pending
 - Drilling scheduled to test 12 targets at La Cigarra and La Negra
- RESOURCE UPDATE on La Cigarra with Initial Resource on La Negra
- ECONOMIC ASSESSMENT on La Cigarra
- RESOURCE ADDITION via acquisition/consolidation
- ATTAIN new high impact early stage projects via prospect generation
- GENERATE RESULTS from Joint Venture Partners

CAPITAL STRUCTURE

Exchange (Tier 1)	TSX.V (“KTN”)
Issued & Outstanding ⁽¹⁾	173.92m
Options	9.66m
Warrants	61.03m
Fully Diluted ⁽¹⁾	244.61m
Current Market Cap ⁽²⁾	CAD ~\$73.04m
KTN (shares 52-week High/Low)	C \$0.60/ \$0.165
Average Daily Volume ⁽³⁾	~206,057
Cash Position	~\$7.25m

KTN.WT (Warrants 52 week High/Low)	C \$0.15/ \$0.40
Average Daily Volume ⁽³⁾	~20,577

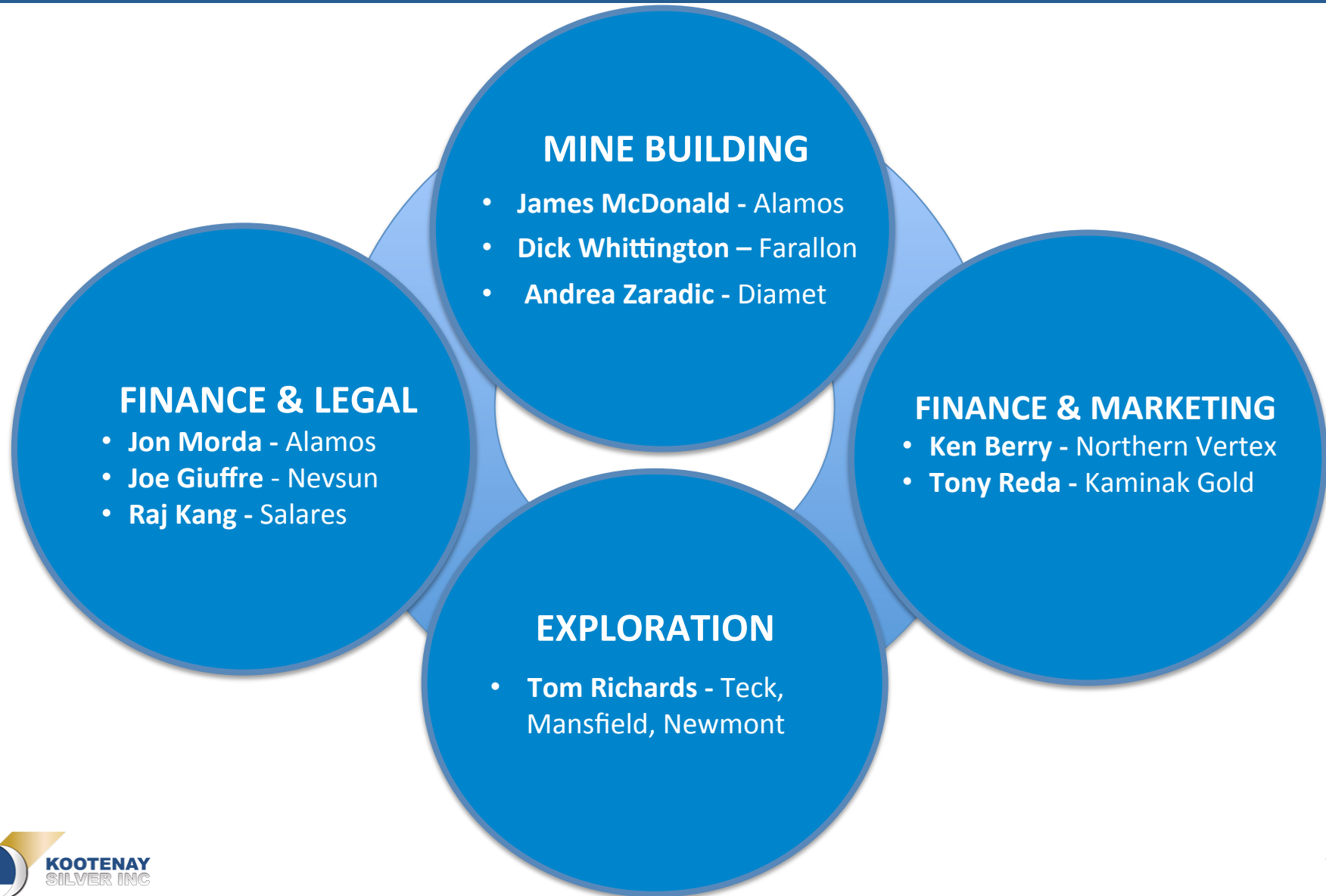


⁽¹⁾ Shares issued and outstanding as at Oct. 21, 2016

⁽²⁾ Slide assumes closing price of C\$0.42 per share, Oct. 21, 2016

⁽³⁾ Average daily volume last 30 days

WELL ROUNDED BOARD AND MANAGEMENT TEAM FROM DISCOVERY TO OPERATIONS



CONSOLIDATION STRATEGY

CONSOLIDATION THESIS

- Purchasing silver resources at less than finding costs provides an efficient way to build a large resource base and leverage to silver price
- Opportunity to consolidate silver exploration & development assets among a highly fragmented peer group
- KTN's Projects provide a large resource base and upside in Mexico
 - 144Moz Ag Eq. of M+I and 35 Moz Ag Eq of Inferred with Good Upside - excluding La Negra⁽¹⁾

(1) Refer to slides 11 and 16 for the required NI 43-101 Technical disclosure related to breakdown of resources in the M, I and I categories, including tonnes, grades and metals. Which assumes 100% recovery of all metals.

CONSOLIDATION PRECEDENT

HISTORIC SECTOR PERFORMANCE



Pan American:
\$2.50/sh to \$41/sh

Silver Standard:
\$1.25/sh to \$37/sh

First Majestic:
\$0.05/sh to \$23/sh

- ***Kootenay is pursuing strategic acquisitions and partnerships in the current low silver price environment***

PROJECTS PROVIDE INTERGRADED PIPELINE FOR DISCOVERY, DEVELOPMENT & CONSOLIDATION

- DISCOVERY in prospect generator portfolio
- RESOURCE DEVELOPMENT at La Cigarra
- PATH TO PRODUCTION with carried interest at Promontorio & La Negra

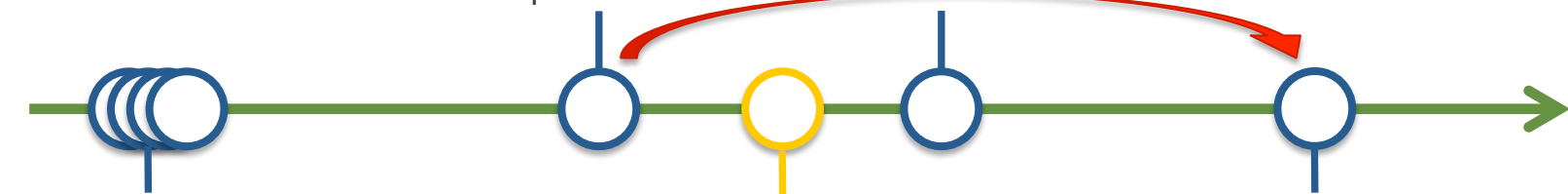


La Negra:

- Exploration drill program
- Focus on resource expansion

Promontorio:

- Evaluating regional prospectivity



Prospect Generation Portfolio

La Cigarra:

- Drill program focused on resource expansion

La Negra Development:

- Carried to Production Interest with Pan American Silver

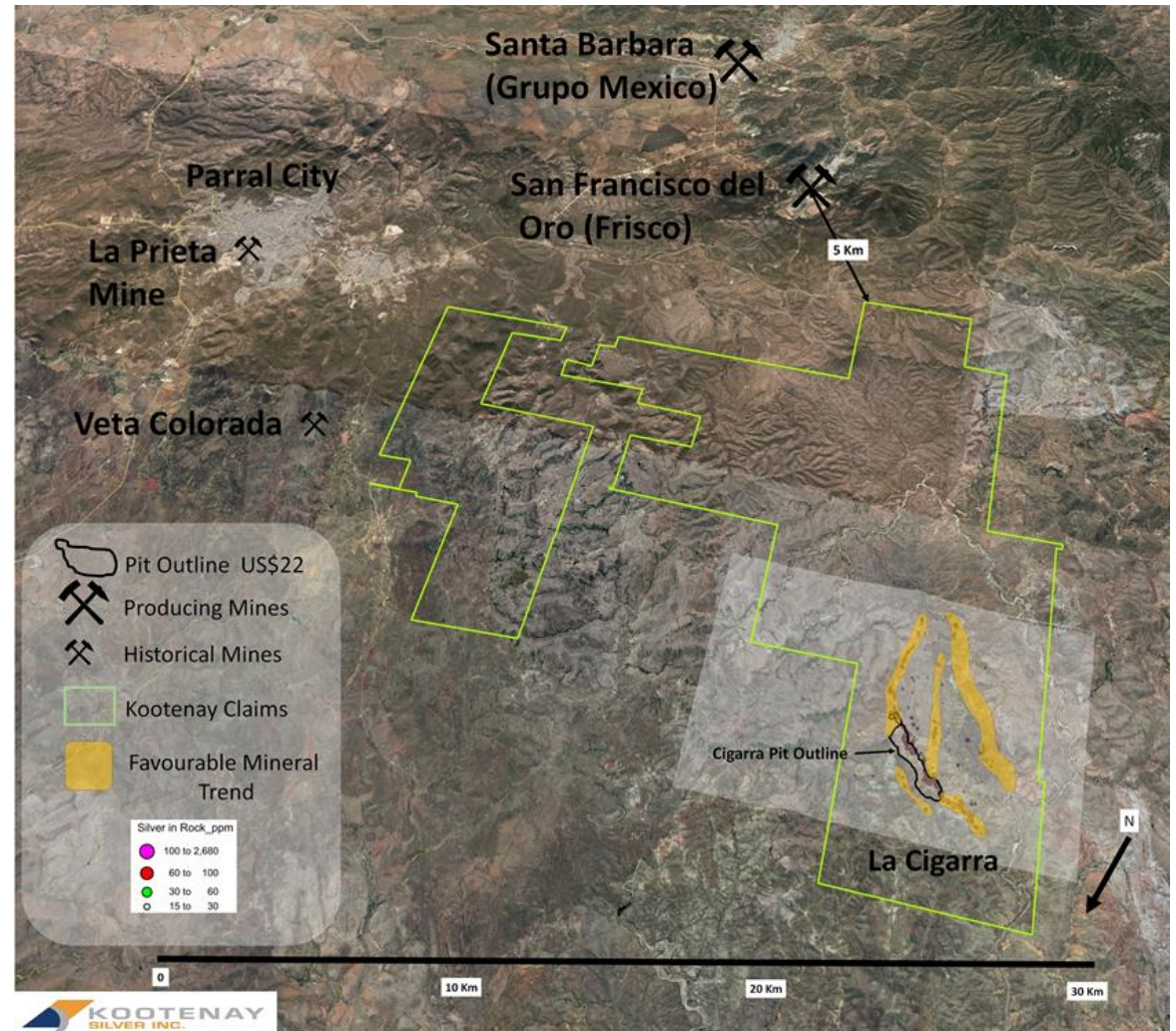
Grassroots Exploration

Resource Definition

Project Development

LA CIGARRA OVERVIEW

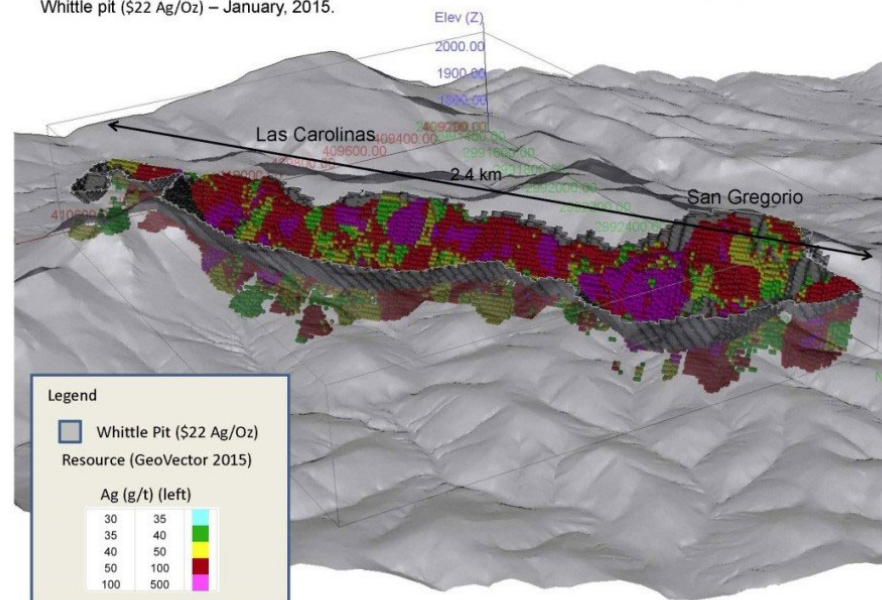
- Located in Chihuahua State, Mexico, within the Historic Parral Silver District
 - over 18,000 hectares in size
 - 26 Km from the city of Parral close to power, rail and highway
- 100% owned with surface rights obtained for mining operations
- Excellent relations with local community and Ejido



LA CIGARRA RESOURCE

- Resource estimate incorporates data from 156 of 173 drill holes
- Pit constrained, potentially surface minable area comprised of the San Gregorio and Las Carolinas mineralized zones
- Significant expansion potential; open along strike at both ends and at depth
- PEA level metallurgy study shows up to 88% silver recoveries and excellent concentrate grades

3D view looking southwest of the San Gregorio/Las Carolinas resource blocks (>35 g/t Ag), Whittle pit (\$22 Ag/Oz) – January, 2015.

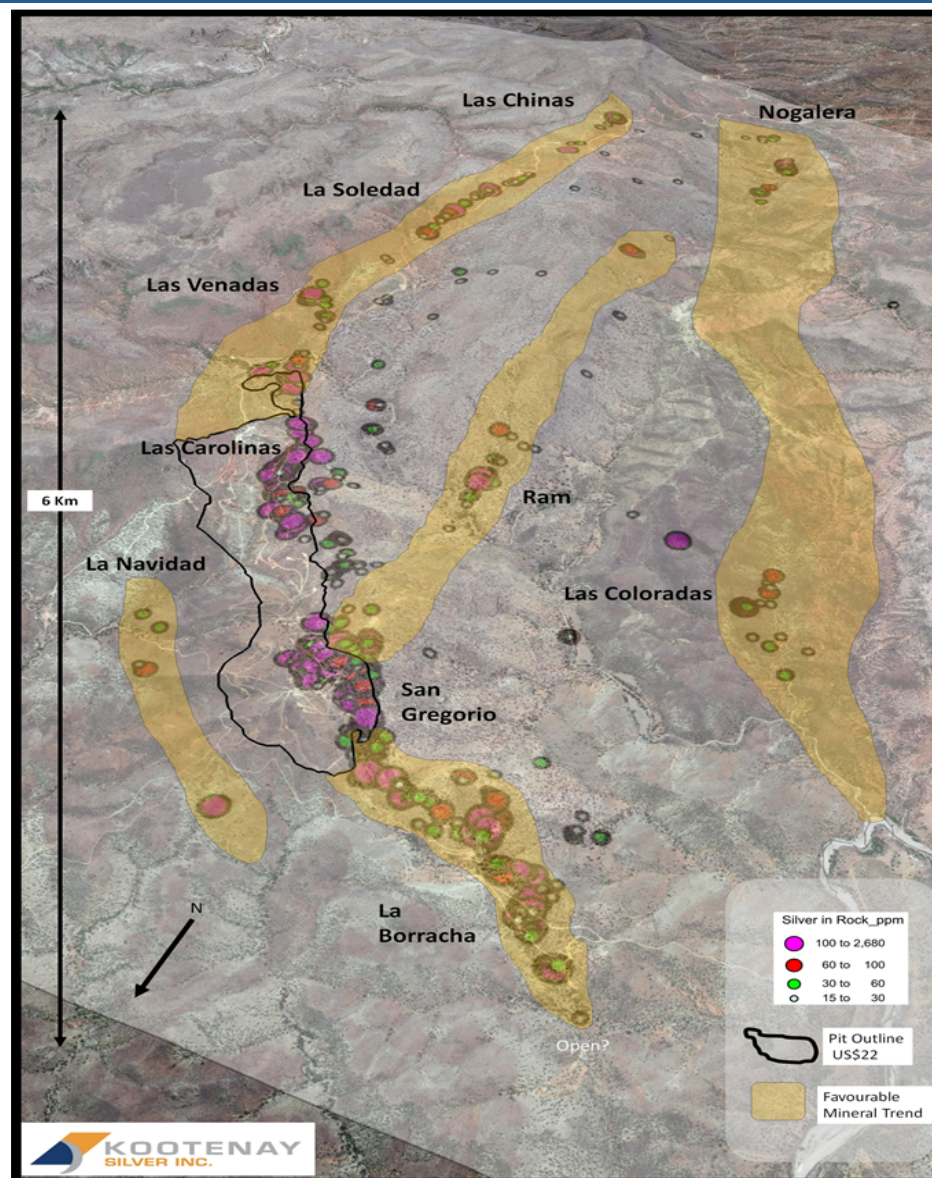


La Cigarra (2015)*	Tonnage	Grade	Contained
Resources			
• M&I	18.5 Mt	86.3 g/t Ag	51.5 Moz Ag
• Inferred	4.5 Mt	80.0 g/t Ag	11.5 Moz Ag

(1) "NI 43-101 Technical Report on the Updated Mineral Resource Estimate on the San Gregorio/Las Carolinas Zones, La Cigarra Silver Project, Chihuahua, Mexico", effective date January 14, 2015 prepared by GeoVector Management Inc.. Mineral resources are reported in relation to a conceptual pit shell at a silver cut-off grade and a \$22/oz silver price.

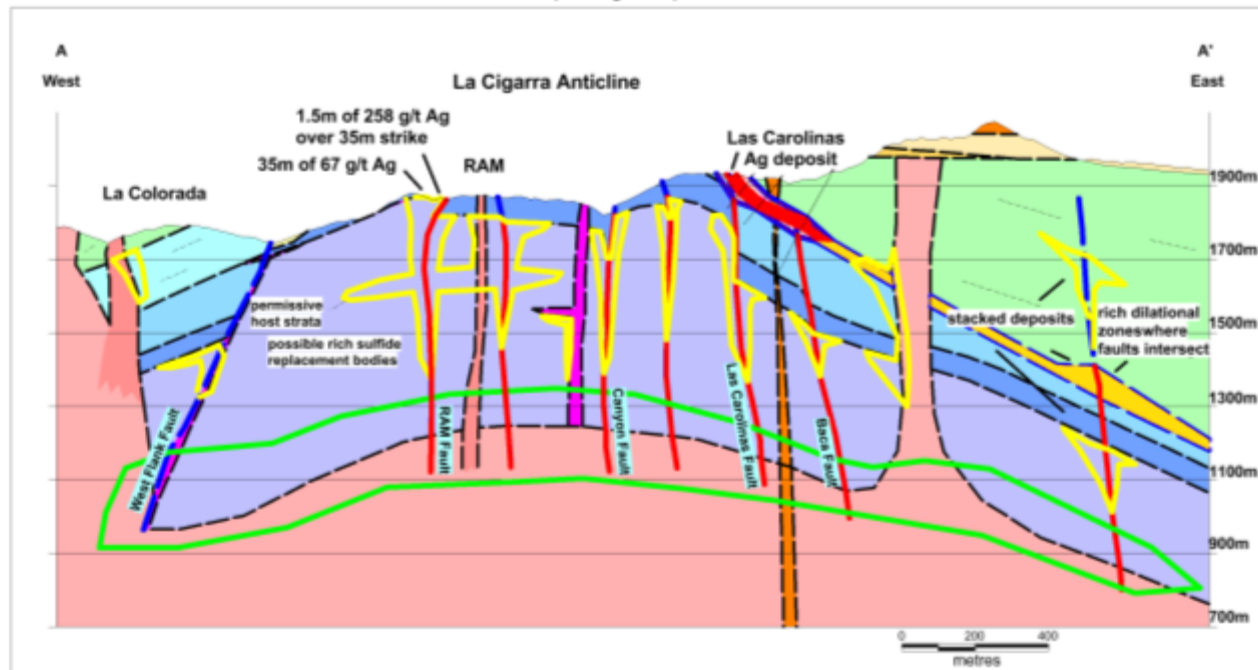
LA CIGARRA EXPLORATION POTENTIAL

- Numerous targets provide potential to increase resource and grade
- Mineralized structure over 6 km of strike
 - Hosts La Cigarra Resource
- Deposit remains open along strike to the NW and SE, and at depth
- Undrilled targets include:
 - RAM Zone
 - La Soledad Zone
 - La Navidad Zone
 - La Colorada Zone
 - Nogalera Zone
- **+3,000m Drill Program underway at RAM Zone**



LA CIGARRA E-W CROSS-SECTION

La Cigarra Project
Schematic Cross-section A-A'
La Colorada-RAM-Las Carolinas
(looking north)



Explanation

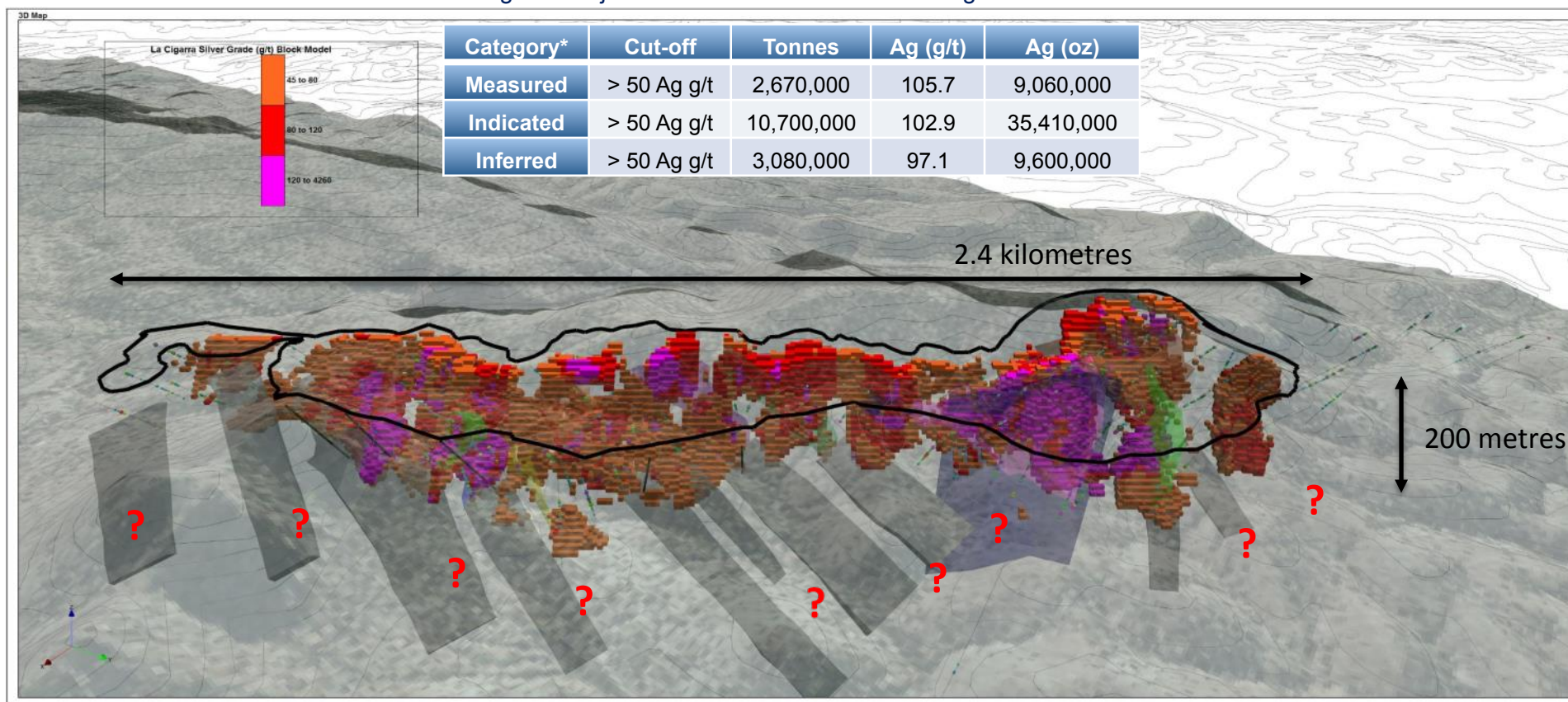
Quaternary-Tertiary	Cretaceous	Targets
Quaternary colluvium	Cretaceous (?) granodiorite	Potential extension to known silver deposit
Tertiary rhyolite	Cretaceous Mezcilara shale/micrite	Potential high-grade polymetallic veins
Tertiary conglomerate	Cretaceous Mezcilara arenite/shale	Potential disseminated and/or stockwork vein deposits of moderate silver grade
Tertiary dacite tuff	Cretaceous Mezcilara greywacke/shale	Potential skarn deposits
Tertiary dacite porphyry	Cretaceous Mezcilara quartzite	
Tertiary trachyandesite-dacite	Cretaceous Mezcilara undifferentiated	

Date: 10/00/15	La Cigarra E-W Cross-section La Colorada-RAM-Las Carolinas
Author: ORE	
Office:	
Drawing:	
Scale: 1:15,000	
Projection: Custom Projection	

HIGH GRADE POTENTIAL

Geological modeling to evaluate potential to expand higher grade zones and improve grade
(Resource blocks shown below are modeled above a 50 gpt silver cutoff)

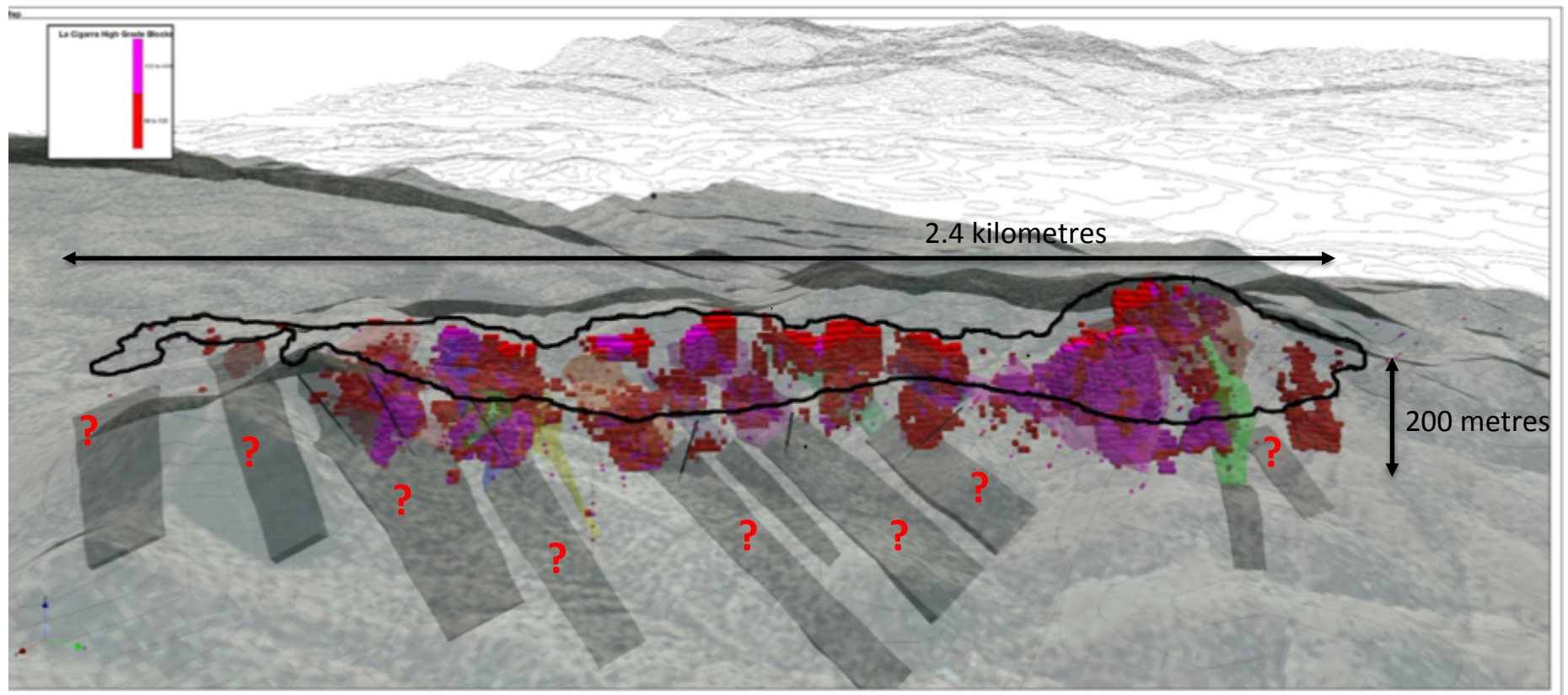
La Cigarra Project 2015 Mineral Resource at 50 g/t silver cut-off*



Note: * Values in this table are reported in relation to a conceptual pit shell at a \$22/oz silver price and for cut-off grades above 35 g/t silver should not be misconstrued with a Mineral Resource Statement. The figures are only presented to show the sensitivity of the block model estimates to the selection of cut-off grade. All figures are rounded to reflect the relative accuracy of the estimate and numbers may not add due to rounding.

HIGH GRADE POTENTIAL

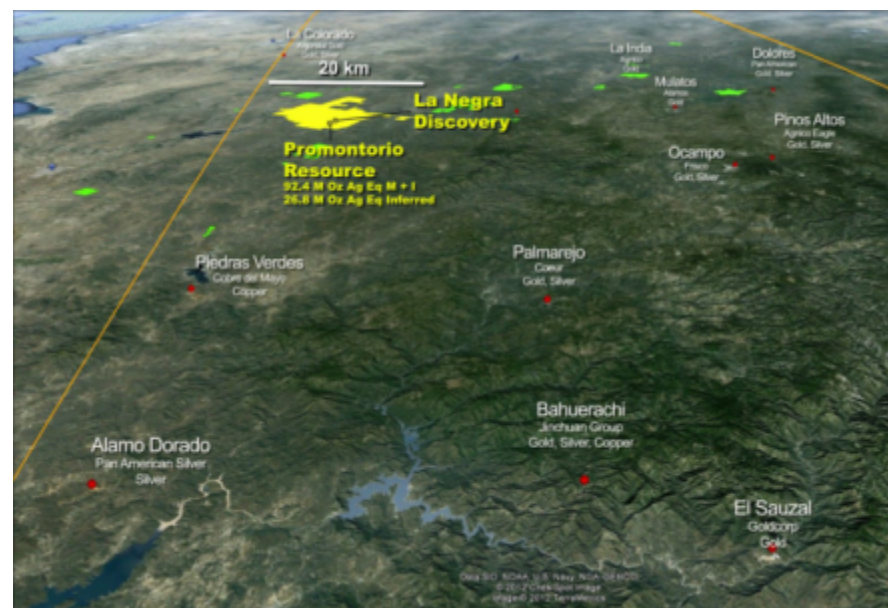
Higher cut offs show continuity of blocks and potential for expansion.
(Resource blocks shown below are modeled above a 75 gpt silver cutoff)



Note: * Values in this table are reported in relation to a conceptual pit shell at a \$22/oz silver price and for cut-off grades above 35 g/t silver should not be misconstrued with a Mineral Resource Statement. The figures are only presented to show the sensitivity of the block model estimates to the selection of cut-off grade. All figures are rounded to reflect the relative accuracy of the estimate and numbers may not add due to rounding.

PROMONTORIO MINERAL BELT

- Optioned to Pan American Silver
- Hosts two major silver discoveries: Promontorio & La Negra
- New high-grade La Negra silver discovery
- Numerous additional targets within a 6.5km x 15km area, including the Cameron-Vania trend
- Pan American to spend 32% or US \$3.7M of its 2016 exploration budget on greenfield and Joint Venture projects such as La Negra

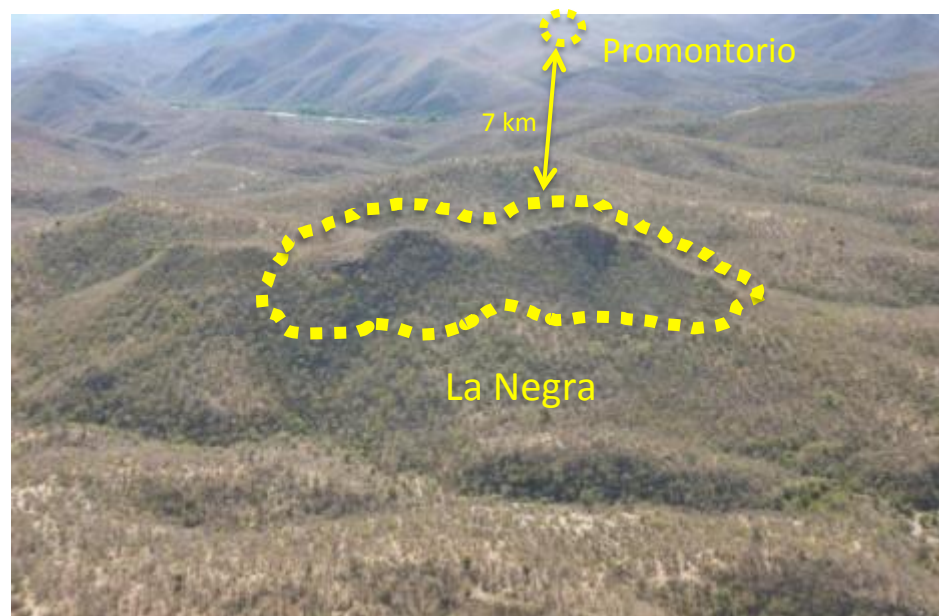


Promontorio (2013)*	Tonnage	Grade	Contained
In-Pit Resources			
• M&I	44.5 Mt	64.3 g/t AgEq	92.0 Moz AgEq
• Inferred	14.6 Mt	52.0 g/t AgEq	24.3 Moz AgEq
Underground Potential			
• M&I	0.2 Mt	57.0 g/t AgEq	0.4 Moz AgEq
• Inferred	1.3 Mt	61.1 g/t AgEq	2.5 Moz AgEq

(1) "NI 43-101 Technical Report on Resources, Promontorio, Mexico", Report by SRK Consultants Inc. Effective date March 31, 2013. Calculated at a pit-constrained cut-off of 20 g/t AgEq, and an underground cut-off of 45 g/t AgEq using a \$31/oz silver price. AgEq calculated using \$31/oz Ag, \$1,650/oz Au, \$0.96/lb Pb, \$0.89/lb Zn, assuming 100% recovery of all metals.

LA NEGRA DISCOVERY

- High-grade silver intercepts to 300m vertically from surface
- Open Pit Low Cost Potential
- Surface footprint of ~500m x 200m
- 41 Holes to Date
- Metallurgy indicates potential for leach extraction in 80 to 90% Range
- **Original 3,400m diamond drill program currently underway by Pan American Silver recently expanded by 2,000m**



High-grade drill results to date

- 3,040 g/t Ag over 1m
- 1,338 g/t Ag over 6m
- 468 g/t Ag over 18m
- 420 g/t Ag over 50m
- 213 g/t Ag over 28m
- 156 g/t Ag over 200m

LA NEGRA RECENT DRILL RESULTS

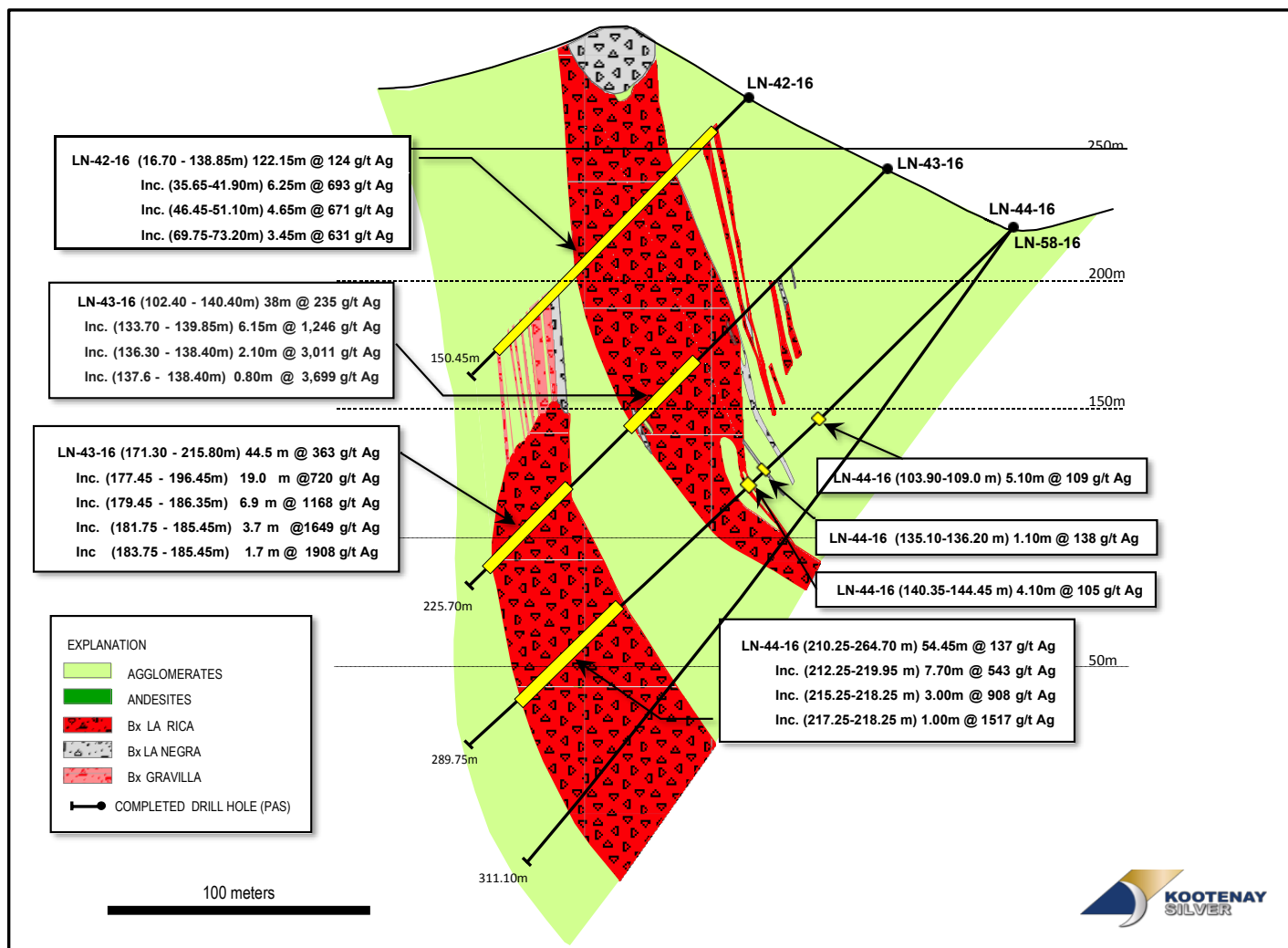
Drill hole	From (m)	To (m)	Interval (m)	Ag gpt
LN-42-16	16.7	138.85	122.15	124
Incl.	35.65	41.90	6.25	693
Incl.	46.45	51.10	4.65	672
Incl.	69.75	73.20	3.45	631
LN-43-16	88.20	89.10	0.90	373
and	92.60	93.20	0.60	161
and	95.35	95.85	0.50	146
and	102.40	140.40	38.00	235
Incl.	133.70	139.85	6.15	1,246
and	171.30	215.80	44.50	363
Incl.	177.45	196.45	19.00	720
LN-44-16	103.90	109.00	5.10	109
and	135.10	136.20	1.10	138
and	140.35	144.45	4.10	105
and	210.25	264.70	54.45	137
Incl.	212.25	219.95	7.70	543
LN-45-16	82.20	102.40	20.20	73
and	120.30	147.80	27.50	59
Incl.	120.30	121.40	1.10	951

Drill hole	From (m)	To (m)	Interval (m)	Ag gpt
LN-46-16	151.80	212.55	60.75	76
Incl.	178.40	192.00	13.60	137
LN-47-16	165.20	182.25	17.05	65
Incl.	165.20	170.80	5.60	116
and	205.50	206.50	1.00	158
LN-48-16	108.55	116.05	7.50	81
Incl.	109.30	114.10	4.80	109
and	142.9	147.70	4.80	113
Incl.	146.40	147.70	1.30	305
and	165.70	193.75	28.05	97
Incl.	179.85	193.75	13.90	141
Incl.	180.75	182.60	1.85	648
LN-50-16	39.05	73.00	33.95	66
Incl.	43.70	56.05	12.35	81
Incl.	66.65	73.00	6.35	103
Incl.	68.00	69.00	1.00	263
LN-52-16	116.70	117.70	1.00	163
LN-53-16	0.00	27.15	27.15	74
Incl.	10.70	15.35	4.65	131

Note: all intervals are downhole. Holes are oriented approximately perpendicular to the mineralized trends, and downhole lengths may be slightly shorter than the stated interval.

LA NEGRA CROSS SECTION

LA NEGRA - 627,500 DRILL HOLE SECTION



KOOTENAY - PAN AMERICAN (PAS) CARRIED TO PRODUCTION DEAL

- Provides pathway to production and future cash flow
- Augments and strengthens consolidation platform
- KTN carried interest mitigates project and finance risk
- To earn 75% PAS invests:
 - US\$16 million in work and cash payments; pay up front C\$350k
 - PAS invests C\$2 million in equity at \$0.22 per share
 - Provides all capital to production⁽¹⁾

⁽¹⁾ PAS Preferred Capital Recovery – Upon PAS earning 75%, KTN is carried to production. All capital invested to the commencement of commercial production by PAS over their 75% interest shall be deemed Preferred Capital and recoverable by them plus interest charged at Libor plus 2% on an accelerated basis being 60% of KTN's 25% interest until repayment. This will make the pro rata interest until repayment of preferred capital equal to 90% PAS and 10% KTN. Upon repayment the JV will revert to ownership of 75% PAS and 25% KTN.

PROSPECT GENERATOR PORTFOLIO

Canada	Exploration Properties	Optioned Properties
	Copley Spike's Big Adventure Walter the Water Buffalo Connors Creek	Silver Fox – Antofagasta 2X Fred, Fox – Theia Resources
Mexico	Exploration Properties	Optioned Properties
	Santa Lucia Guadalupe Male San Diego	Cervantes – Aztec Metals

Continued strategy of pursuing JV opportunities feeding the development pipeline and reducing capital and project risk

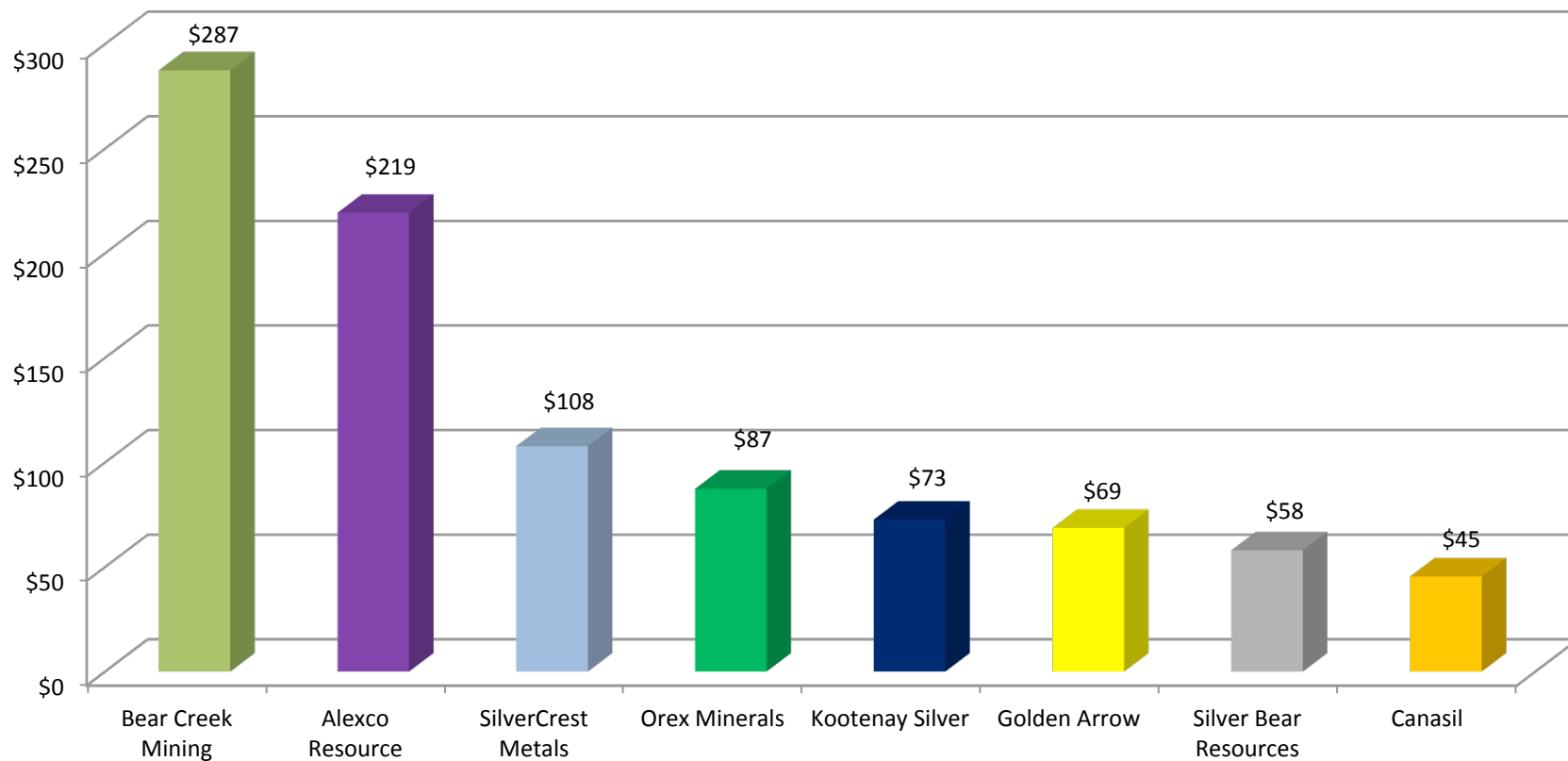
FORWARD PLAN & CATALYSTS

	Near Term	Mid Term
La Cigarra	<ul style="list-style-type: none"> 3,000m drill program underway Three phase drill plan to test undrilled targets and strike of La Cigarra Resource 	<ul style="list-style-type: none"> Update Resource Calculation PEA
Promontorio / La Negra	<ul style="list-style-type: none"> Under Option to Pan American Silver 5,400m of drilling underway at La Negra with surface exploration program 	<ul style="list-style-type: none"> Pan American Silver to evaluate project development options Initial Resource Calculation at La Negra
Prospect Generator Portfolio	<ul style="list-style-type: none"> JV Partners to determine work programs amongst the three active ventures Evaluate on-going joint venture opportunities 	<ul style="list-style-type: none"> Acquire new high impact early stage projects via prospect generation Results from Joint Venture Partners
Corporate	<ul style="list-style-type: none"> Continue to evaluate other consolidation targets 	<ul style="list-style-type: none"> Resource addition via acquisition/consolidation

Strong continuum of assets to provide steady news flow

SILVER DEV. / EXP. PEER GROUP

Market Cap. (C\$M)
As at Oct. 21, 2016



KOOTENAY'S KEY TAKE-AWAYS

- LEADING MEXICAN SILVER CONSOLIDATOR & DEVELOPMENT COMPANY
 - Combined 144Moz AgEq M&I with 35Moz AgEq Inf. ...with more to come
- LARGE CAPITAL MARKETS PRESENCE
 - GREATER LIQUIDITY for shareholders
- PLATFORM FOR AGGRESSIVE GROWTH through:
 - RESOURCE DEVELOPMENT at La Cigarra
 - PATH TO PRODUCTION with carried interest at Promontorio & La Negra
 - DISCOVERY by drilling new zones and within prospect generator portfolio
- CONTINUATION OF ACQUISITION/ CONSOLIDATION STRATEGY
 - Silver ounces are cheaper to buy than they are to find
- POTENTIAL VALUE RE-RATING
 - RESOURCE EXPANSION and advancement to ECONOMIC ASSESSMENT
 - LEVERAGE to silver price

CONTACT US

KOOTENAY SILVER INC.

1055 West Hastings Street, Suite #1820
Vancouver, BC, V6E 2E9, Canada

Tel: (604) 601-5650

Fax: (604) 683-2249

Toll free: (888) 601-5650

E-Mail: info@kootenaysilver.com

Website: www.kootenaysilver.com

Twitter: <https://twitter.com/KootenaySilver>