



**El Tigre Project, Sonora, Mexico**

TSXV:OCN

OTCQB:OCNSF

# FORWARD LOOKING STATEMENTS

This Oceanus Resources Corporation (“**Oceanus**” or the “**Company**”) presentation contains certain statements, which may constitute “forward-looking information” under Canadian securities law requirements and “forward looking statements” under applicable securities laws (“**forward-looking information**”). All statements other than statements of historical fact contained in this presentation, including, but not limited to, statements with respect to the future financial position and results of operations, strategy, plans, objectives, goals and targets, anticipated commencement dates of exploration and development programs and mining operations, projected quantities of future production, costs and expenditures and conversion of mineral resources to reserves of Oceanus, may constitute forward-looking information.

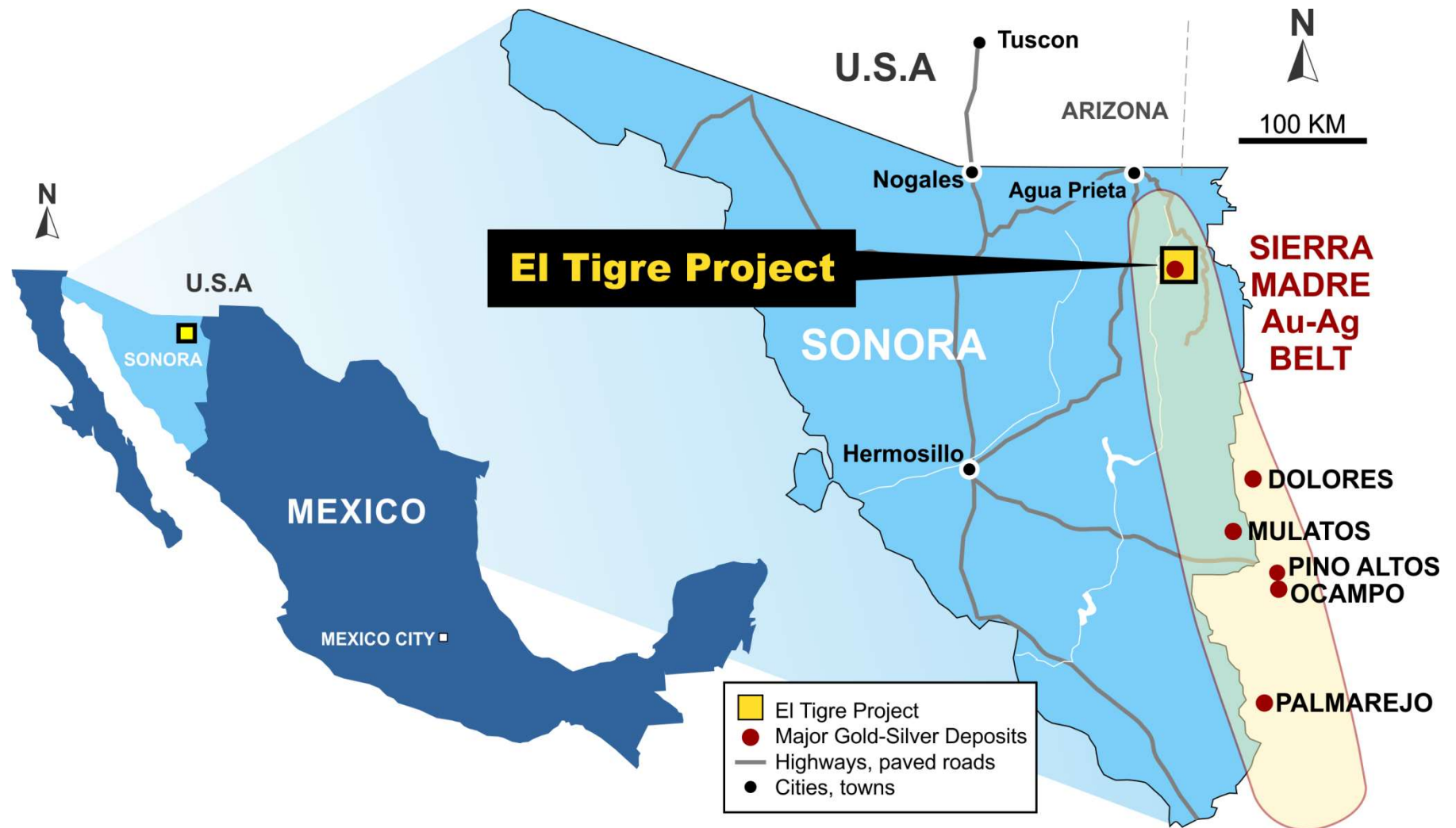
Forward-looking information can be identified by the use of words such as “could”, “expect”, “believe”, “will”, “may”, “intend”, “plan”, “estimate”, “anticipate”, “predict”, “project” and similar expressions and statements relating to matters that are not historical facts. Forward-looking information involves known and unknown risks and uncertainties and other factors, including those described under the heading “Risk Factors” in the annual information form of Oceanus dated September 1, 2015 and in documents incorporated by reference therein, which may cause the actual results, performance or achievements of Oceanus to be materially different from any future results, performance or achievements expressed or implied by such forward-looking information. These factors include, among others, the ability of Oceanus to operate as a going concern; mineral exploration, development and operating risks; the Company’s limited operating history; the Company’s capital requirements for current and planned exploration and development; the trading price and volatility of the Company’s common shares; global financial volatility; volatility of commodity prices; risks related to operating in a foreign jurisdiction; and reliance on key members of management.

Forward-looking information is based on assumptions that Oceanus believes to be reasonable. Key assumptions upon which the Company’s forward-looking information is based include, but are not limited to: that commodity prices will not decline significantly nor for a lengthy period of time; that the Company’s mineral resource and reserve estimates are accurate; that the Company will have sufficient working capital and be able to secure additional funding necessary for the continued exploration and development of the Company’s property interests; and that key personnel will continue their employment with the Company.

Although the Company has attempted to identify important factors that could cause actual actions, events or results to differ materially from those described in forward-looking information, there may be other factors that cause actions, events or results not to be as anticipated, estimated or intended. There can be no assurance that forward-looking information will prove to be accurate, as actual results and future events could differ materially from those anticipated in such statements. Accordingly, readers should not place undue reliance on forward-looking information. The forward-looking information in this presentation is made as of September 14, 2017 and the Company undertakes no obligation to publicly update or revise any forward-looking information, whether as a result of new information, future events or otherwise, other than where a duty to update such information or provide further disclosure is imposed by applicable law.

The Technical Information contained in this presentation has been reviewed and approved by David R. Duncan, P. Geo., VP Exploration, Oceanus Resources, who is a Qualified Person as defined in NI 43-101.

# EL TIGRE PROJECT, SONORA, MEXICO

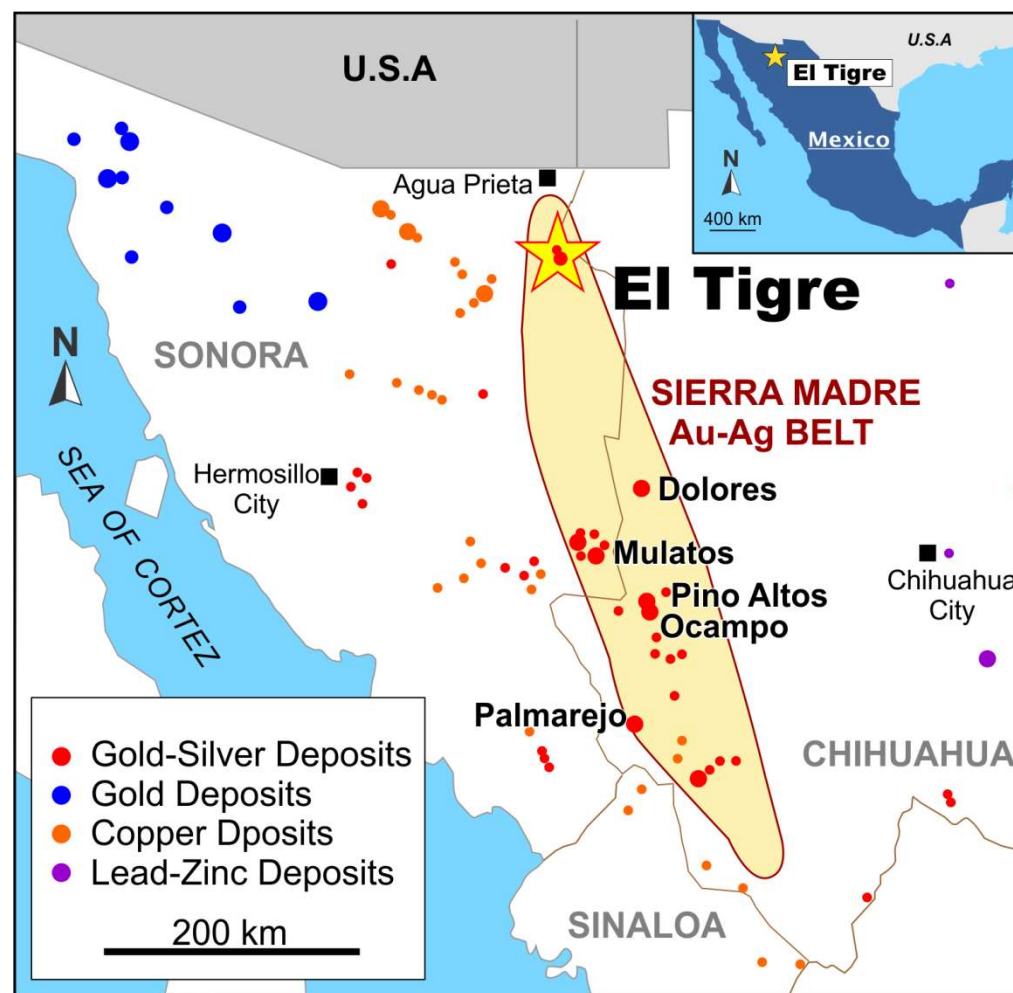


# EL TIGRE PROJECT IN THE SIERRA MADRE OCCIDENTAL

## A PROLIFIC GOLD BELT

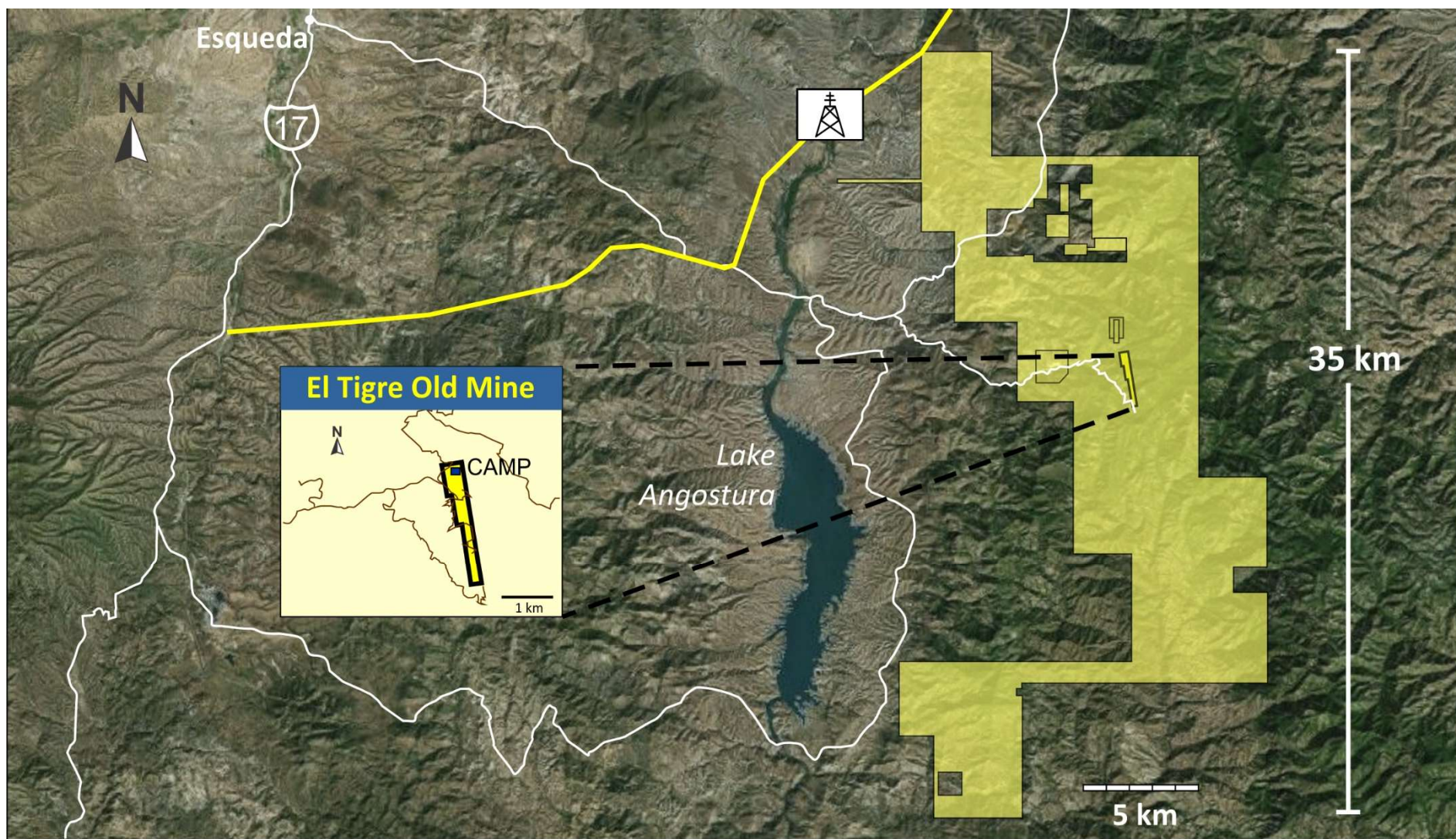
Next Door to Multi-Million Ounce Deposits in the Sierra Madre Occidental including  
**Palmarejo, Pinos Altos, Mulatos,  
Dolores and Ocampo**

- The Sierra Madre Occidental is a 2,000 km long mountain chain with many Ag-Au veins mined during Spanish times
- El Tigre is the most northern Ag-Au deposit in the Sierra Madre Occidental, untouched by Spaniards, with multi-million ounce potential
- Excellent infrastructure, roads to property, nearby power, water supply and skilled labour force



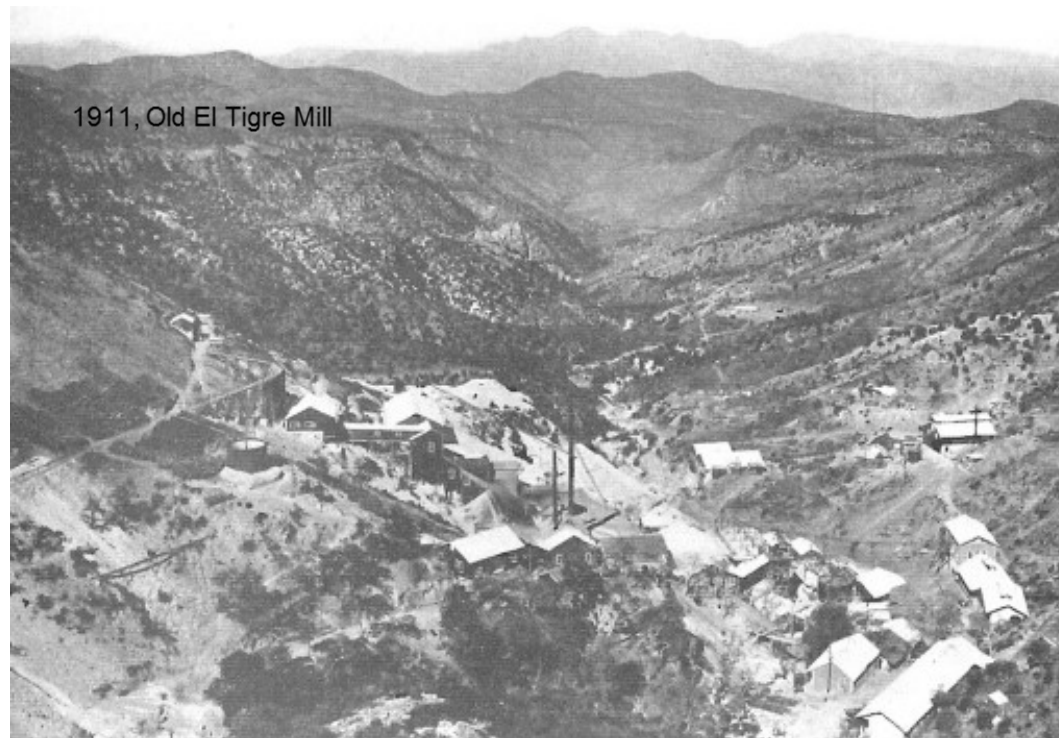


# EL TIGRE CLAIMS – 100% OWNED & ROYALTY FREE



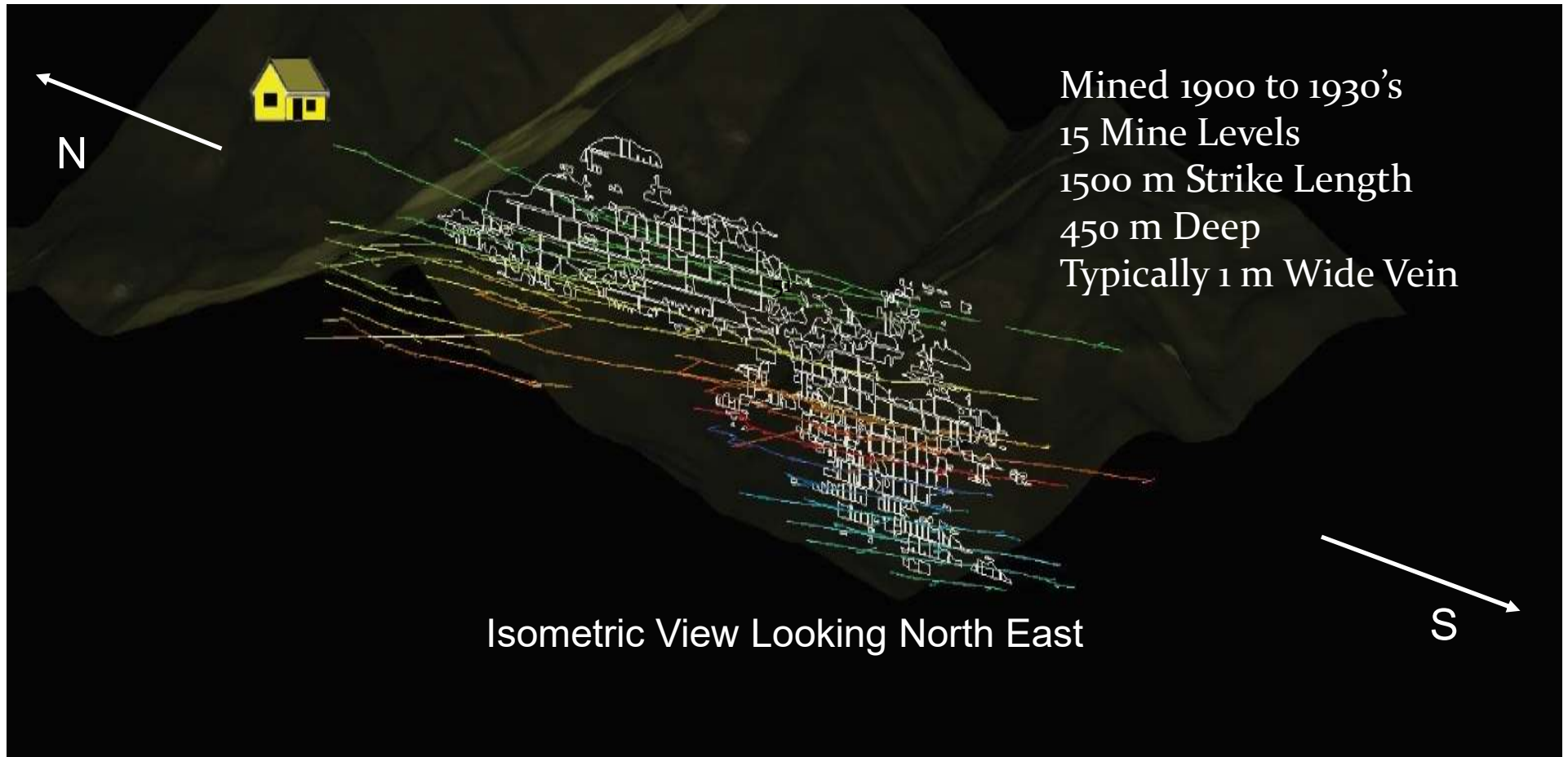
# EL TIGRE HISTORICAL PRODUCTION - TENOR OF DEPOSIT

- Historical underground mine (1903 to 1938) following high grade silver and gold veins:
  - **353,000 ounces of gold produced**
  - **67.4 million ounces of silver produced**
  - Reported production through 1938 was 1.87 Million tons averaging 1,308 g/t Ag and 7.54 g/t Au (Craig, 2012)





# EL TIGRE HISTORIC UNDERGROUND WORKINGS

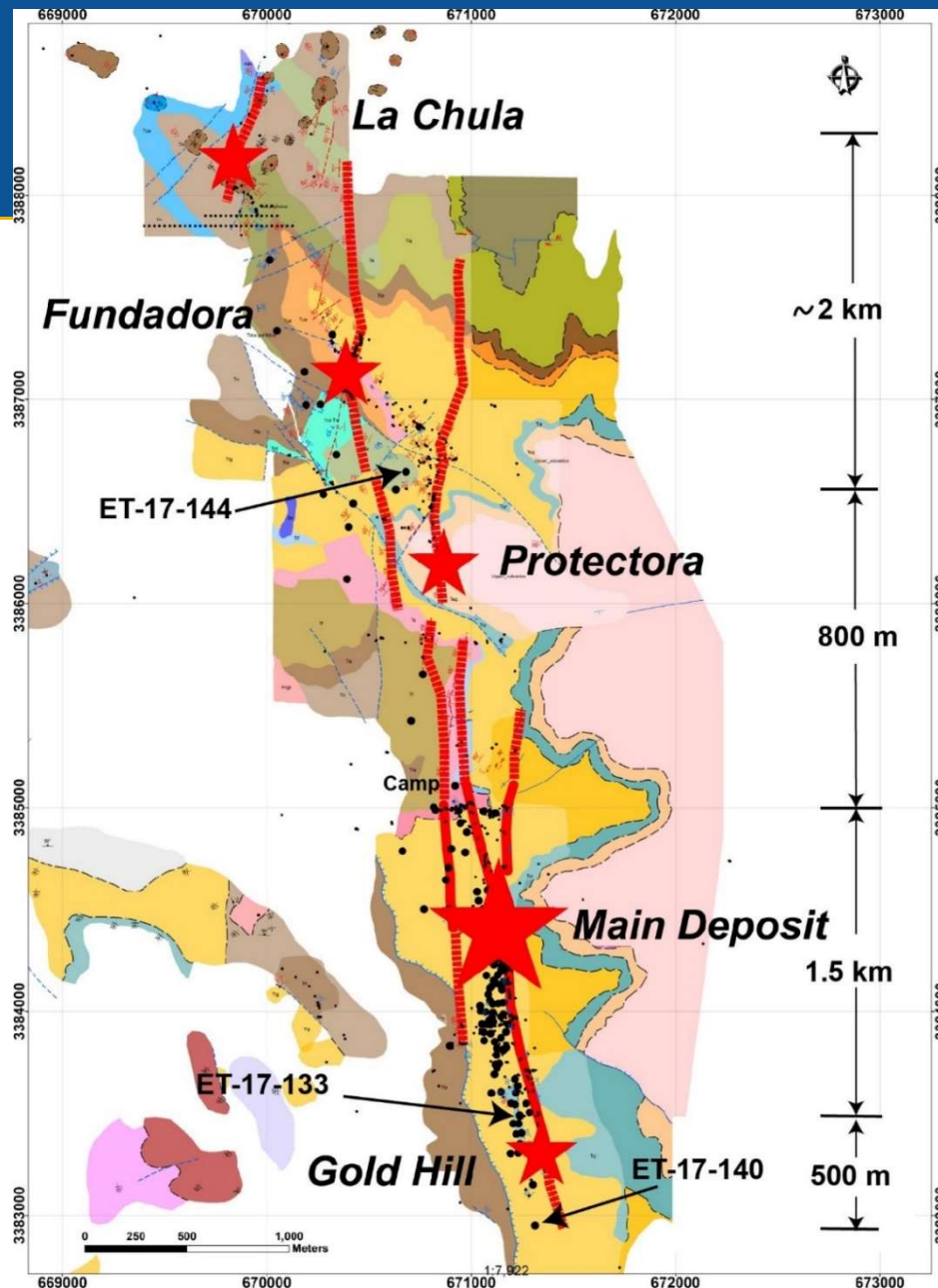


# 2017 NI 43-101 MINERAL RESOURCE ESTIMATE (1-11)

Zone	Class	AuEq g/t Cut-Off	Tonnes (000's)	Ag g/t	Ag ozs (000's)	Au g/t	Au ozs (000's)	Au Eq g/t	AuEq ozs (000's)
El Tigre Pit	Indicated	0.20	25,170	15	11,906	0.51	416	0.69	559
	Inferred	0.20	2,791	12	1,093	0.38	34	0.52	47
El Tigre Underground	Indicated	1.50	207	156	1,041	0.46	3	2.33	16
	Inferred	1.50	11	82	29	1.27	0	2.26	1
Fundadora Pit	Indicated	0.20	451	167	2,428	0.93	14	2.94	43
	Inferred	0.20	1,774	150	8,554	0.69	39	2.49	142
Fundadora Underground	Indicated	1.50	80	118	306	1.03	3	2.45	6
	Inferred	1.50	2,003	140	9,044	0.60	38	2.28	147
Sub Total Indicated		0.20, 1.50	25,908	19	15,681	0.52	436	0.75	624
Sub Total Inferred		0.20,1.50	6,579	89	18,720	0.52	111	1.59	337
El Tigre Tailings	Indicated	0.37	939	78	2,345	0.27	8	1.21	37
	Inferred	0.37	101	79	254	0.27	1	1.22	4
Total Indicated		0.20,0.37,1.50	26,847	21	18,026	0.51	444	0.77	661
Total Inferred		0.20,0.37,1.50	6,680	88	18,974	0.52	112	1.59	341

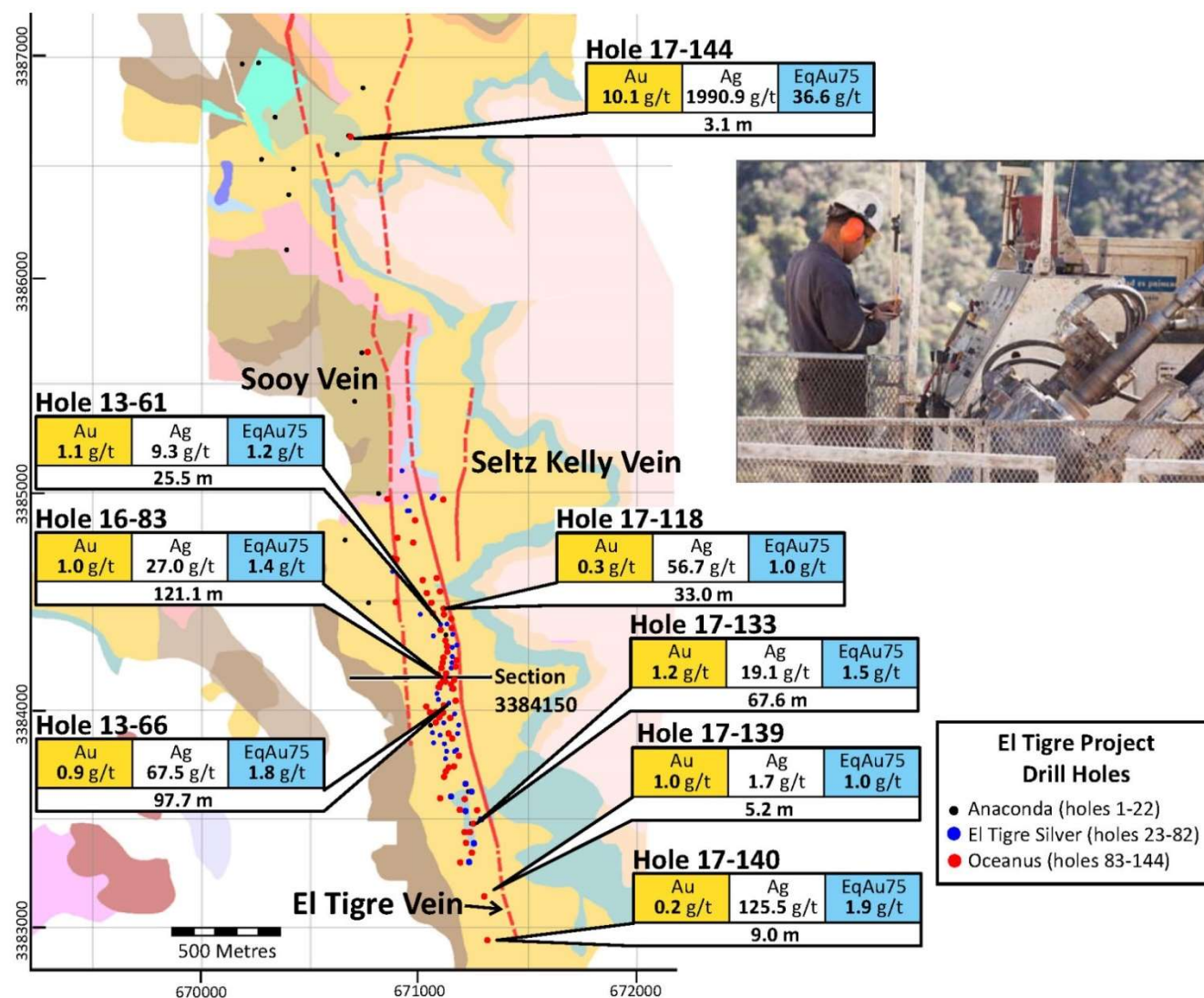


# DRILL TARGETS

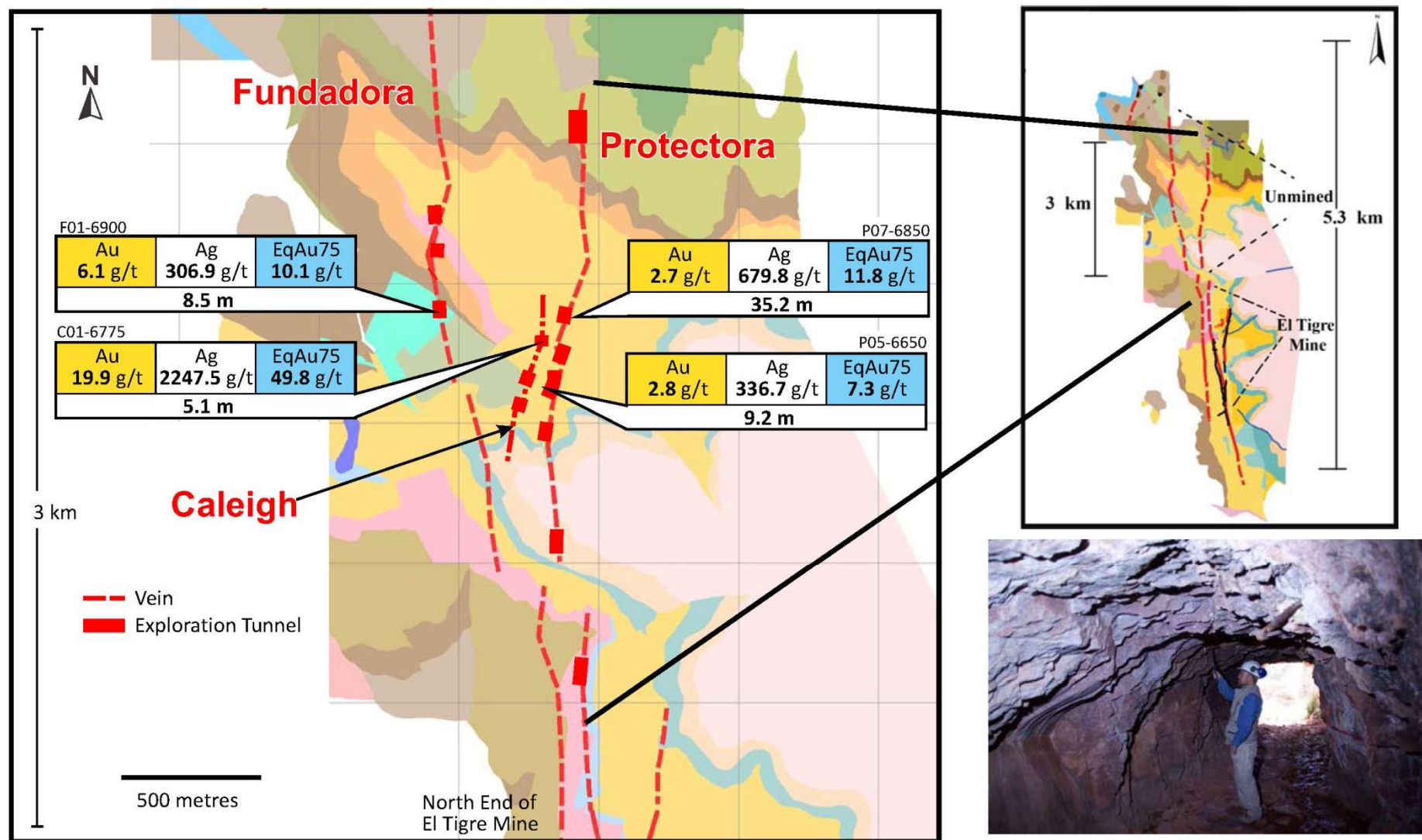


- Hole ET-17-144 returned 3.15 meters of 36.6 g/t gold equivalent from a depth of 88.25 meters to 91.40 meters consisting of **10.1 g/t gold and 1990.9 g/t silver**. This intercept included 0.85 meters of 135.1 g/t gold equivalent consisting of **37.2 g/t gold, 7,338.9 g/t silver, 2.84% copper, 4.06% zinc and 1.38% lead**
- Hole ET-144 also returned **1,107.36 g/t silver and 0.024 g/t gold** over 1.5 meters from a depth of 188.65 meters to 190.15 meters

# DRILL HOLE INTERSECTIONS

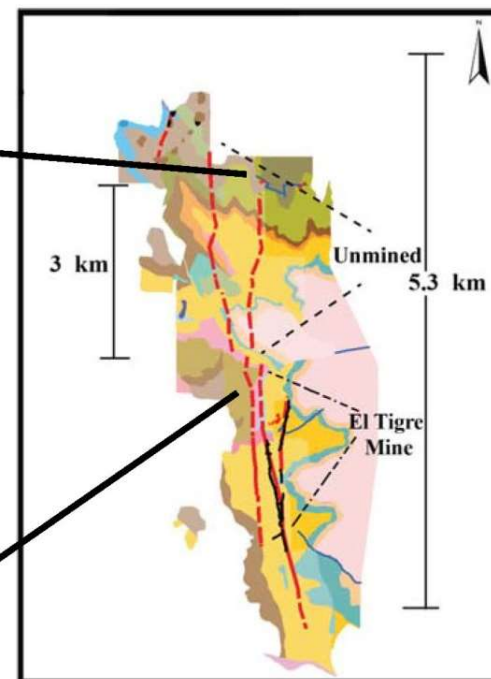
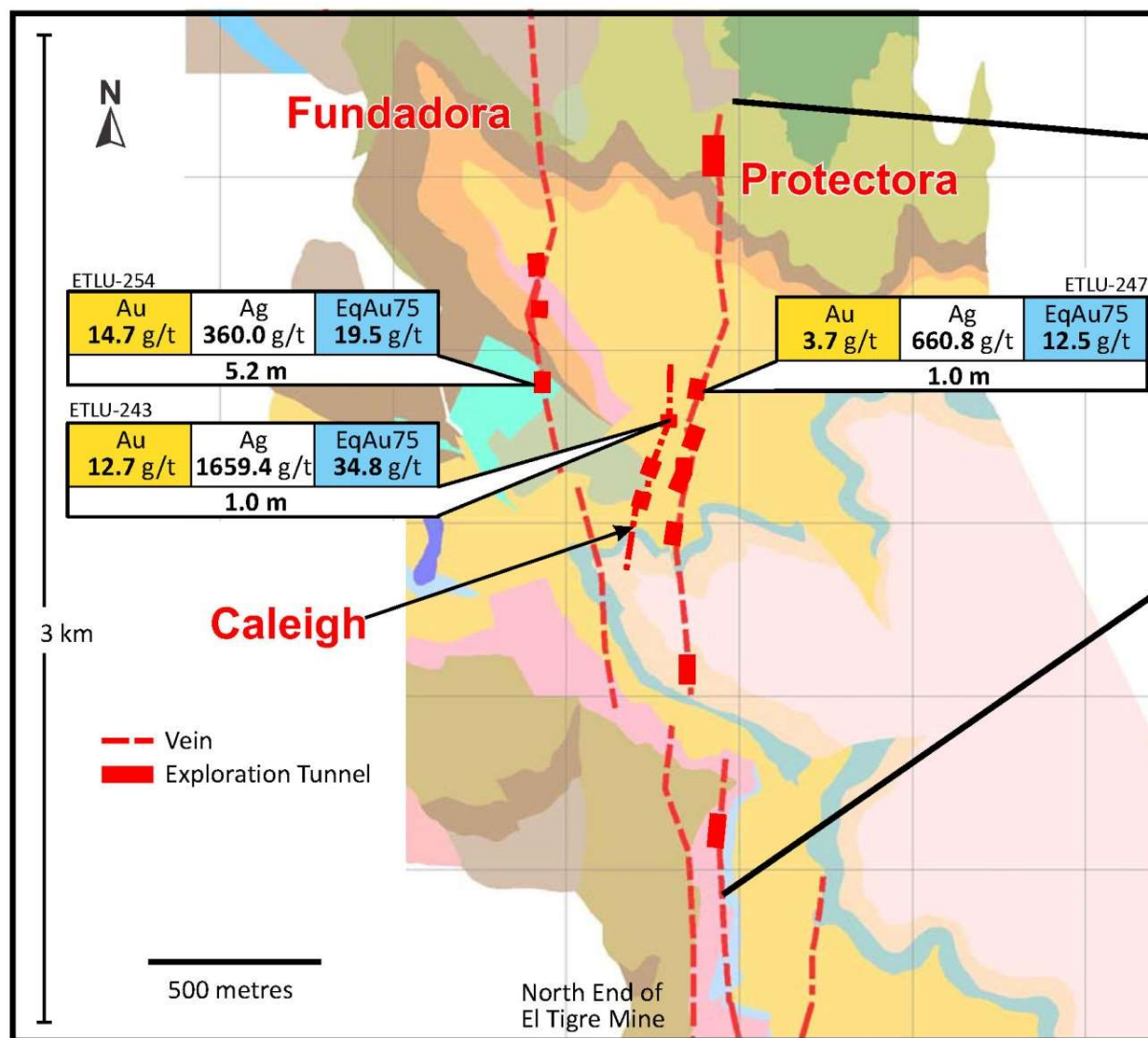


# UNDERGROUND CHANNELS - ALONG STRIKE OF VEINS



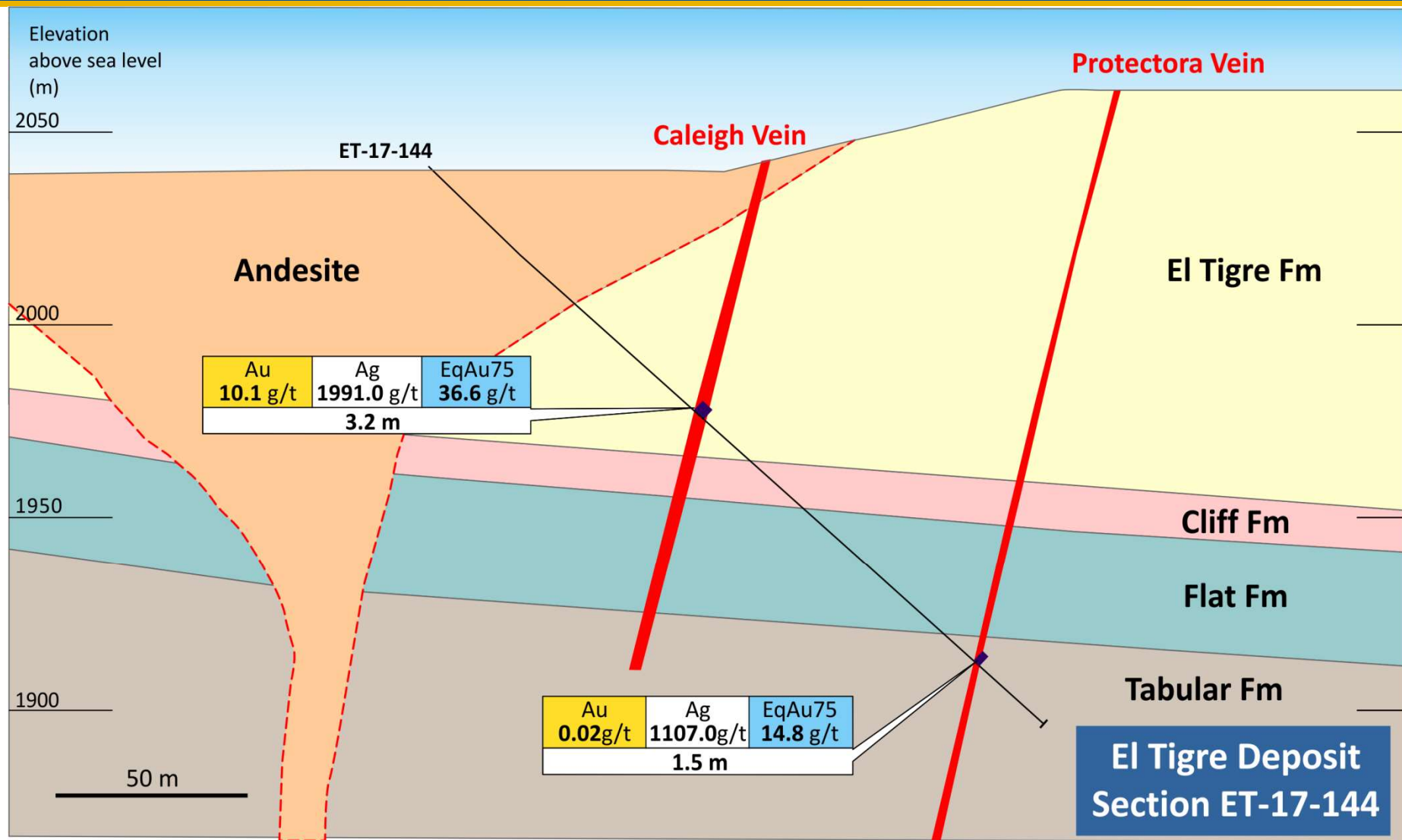


# UNDERGROUND CHANNELS - ACROSS VEINS

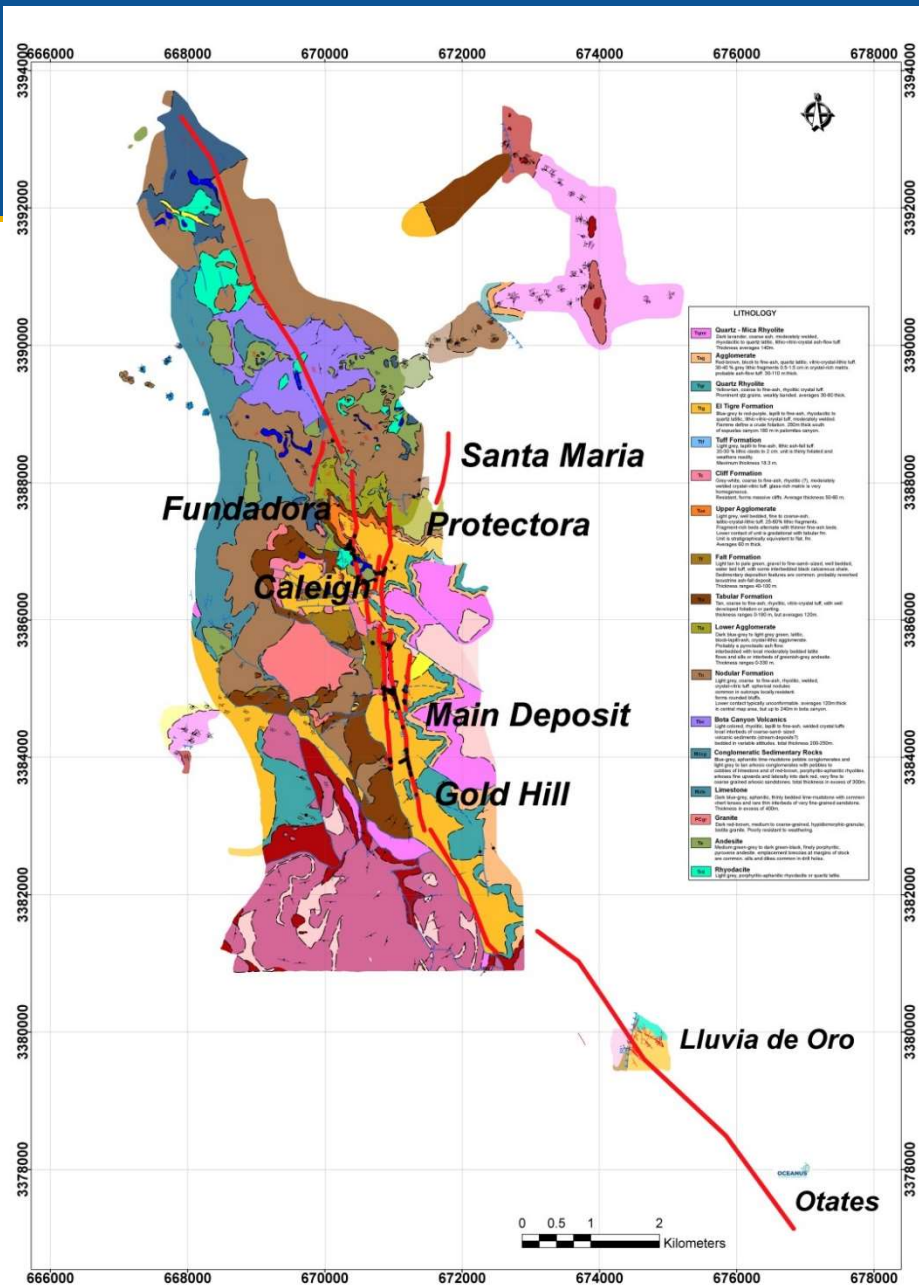




# DRILLING SECTION 6650N CALEIGH VEIN



# GEOLOGY MAP



# CONTACT INFORMATION

## Corporate Office



902.492.0298



[www.oceanusresources.ca](http://www.oceanusresources.ca)



[info@oceanusresources.ca](mailto:info@oceanusresources.ca)



Suite 2108, Purdy's Tower II

1969 Upper Water Street

Halifax, Nova Scotia

Canada B3J 3R7



TSXV:OCN and OTCQB:OCNSF