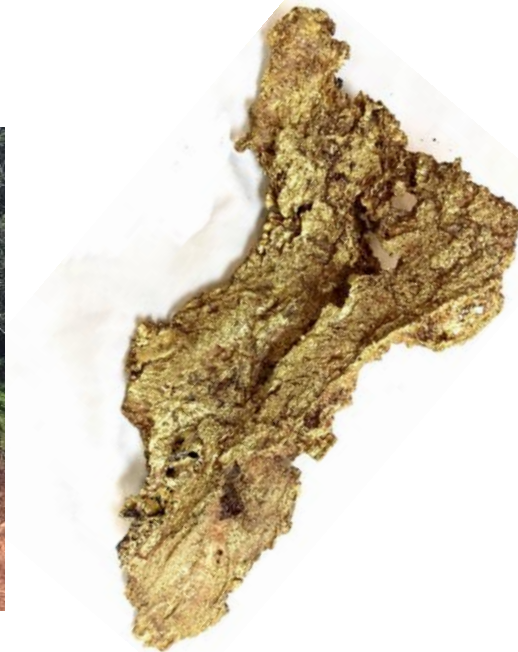


# Exciting Gold Portfolio of Tier 1 development assets in the Guiana Shield

Precious Metals Summit, Beaver Creek, Colorado.  
September 20-22<sup>nd</sup> , 2018



- **Qualified Person:** The technical information in this presentation has been approved by Carlos H. Bertoni, M.Sc., P. Geo., a consultant to Reunion.
- **Disclaimer:** The business of Reunion Gold Corporation is subject to considerable risks and uncertainties, including financial, operational, environmental and political risks which even a combination of careful evaluation, experience and knowledge may not eliminate. Few properties that are explored are ultimately developed into producing mines.

Certain statements made in this presentation, including, without limitation, those concerning the outlook for Reunion's operations, the planned exploration and development activities, plans to validate historical resources, potential mineralization, and the ability of the Company to meet the conditions to exercise the options to acquire the projects described in the presentation constitute 'forward looking statements' or 'forward looking information' under applicable U.S. and Canadian securities legislation. By its nature, forward-looking information requires Reunion to make assumptions that may not materialize or that may not prove to be accurate. Forward looking information is subject to a variety of risks, both known and unknown, including risks related to the renewals of the concessions and permits for the French Guiana projects, fluctuation of gold prices, risks and dangers inherent to mining exploration and development, political and social uncertainties, imprecision of resource estimates, environmental and permitting risks, the state of global capital markets and the availability of capital resources to execute plans. Although Reunion believes that the expectations reflected in the forward-looking information contained in this presentation are reasonable, no assurance can be given that these expectations will prove to have been correct. Accordingly, results could differ materially from those set out in the forward-looking information.

The objectives expressed throughout this presentation are based on Reunion's assessment of the data currently available and are conceptual in nature.

- **Cautionary Note to U.S. Investors:** This presentation may use the terms "measured", "indicated" and "inferred" resources. We advise U.S. investors that while these terms are recognized and required by Canadian regulations, the U.S. Securities and Exchange Commission does not recognize them. U.S. investors are cautioned not to assume that any part or all of mineral deposits in these categories will ever be converted into reserves. In addition, "inferred" resources have a great amount of uncertainty as to their existence, and great uncertainty as to their economic and legal feasibility. It cannot be assumed that all or any part of inferred mineral resources will ever be upgraded to a higher category. U.S. investors are cautioned not to assume that any part or all of an inferred mineral resource exists or is economically or legally mineable.

## Projects

- Focused on exploring gold projects in the highly prospective and under-explored **Guiana Shield** gold district.
- **French Guiana:** options to acquire the 84 km<sup>2</sup> **Dorlin Project** (up to 80%), which contains a historical estimate of 1.6 M oz. of gold; and two historical gold producers: the 78.2 km<sup>2</sup> **Boulangier Project** (100%) located 40 km south of Cayenne; and the 122 km<sup>2</sup> **Haute Mana** (80%) Project.
- **Guyana:** early stage exploration is underway in the Northwest District, at the **Waiamu, Aremu, and Arawini Projects**, all with artisanal gold production. Waiamu and Aremu are 45 km and 90 km, respectively, from Guyana Goldfields's Aurora mine.

## People

- Proven technical & management team with enviable track record of success in the Guiana Shield
- Team discovered/developed four deposits, two of which became operating mines (Omai and Rosebel) and two which reached feasibility stage (Camp Cayman and Montagne D'Or), including **David Fennell**, founder of Golden Star Resources, who co-developed Omai and Rosebel with Cambior, and **Rejean Gourde** who was responsible for the development/operation of these mines in Guyana and Suriname.

## Capital Markets

- Solid cash position of ~\$8.2 million as at July 31, 2018.
- Strong support from major shareholder Dundee Corp. ( 16.5%) and Barrick Gold Corp. (15.0%). Other investors include Donald Smith Value Fund (~6.0%) and Gold 2000 (~4.0%).

# Reunion Gold Guiana Shield Timeline

## 2017

### February

- Reunion signs option to acquire up to 80% of Dorlin project, French Guiana.
- New management put in place.

### July

- Company signs option to acquire 100% of Boulanger project, French Guiana.

### September

- Reunion closes C\$10.9m non-brokered Private placement.

### November

- Reunion closes C\$9.1m Private Placement with Barrick Gold Corporation, Barrick has 15% interest in Reunion.

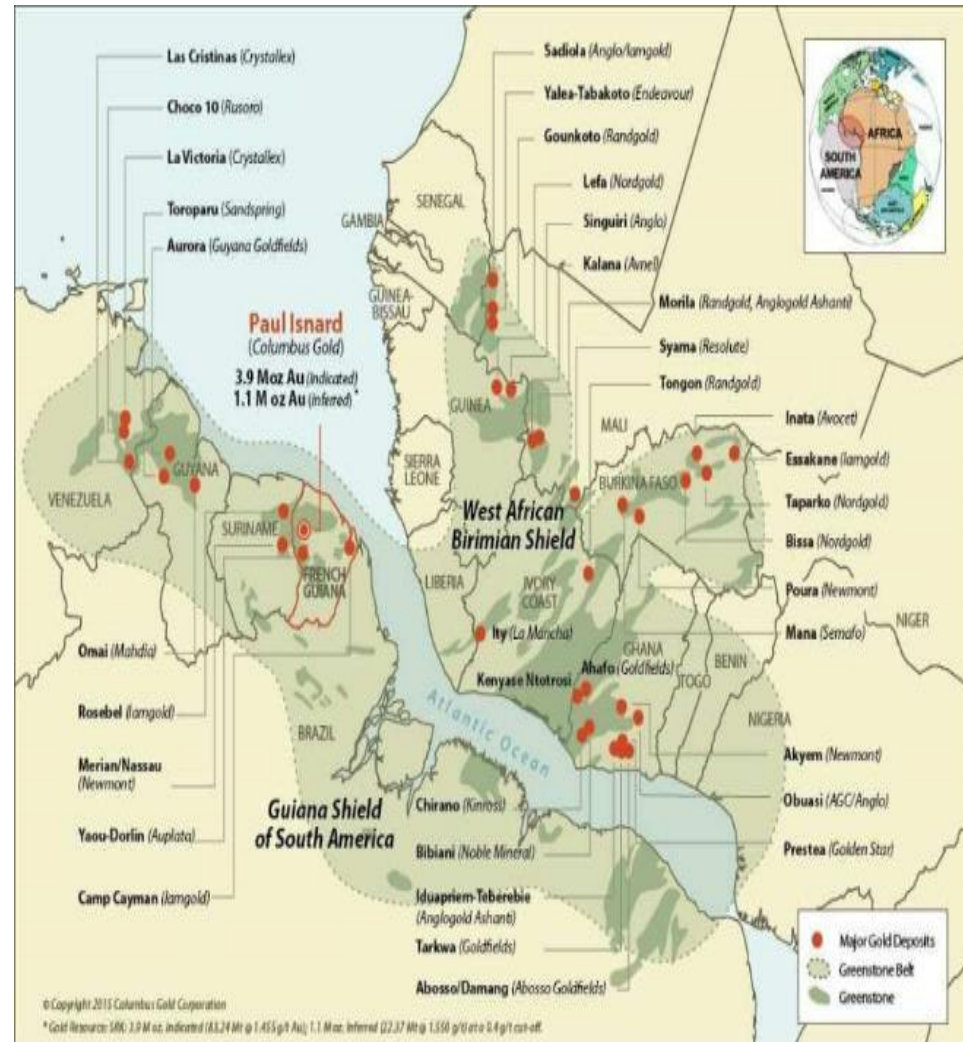
## 2018

### May

- Reunion announces options to acquire 100% interest in Waiamu and Arawini gold project in Guyana.

### June

- Company reports high grade drill results from Boulanger gold project, French Guiana.



Drilling underway at Dorlin and Waiamu...

Source: [www.mining.com](http://www.mining.com) 2016

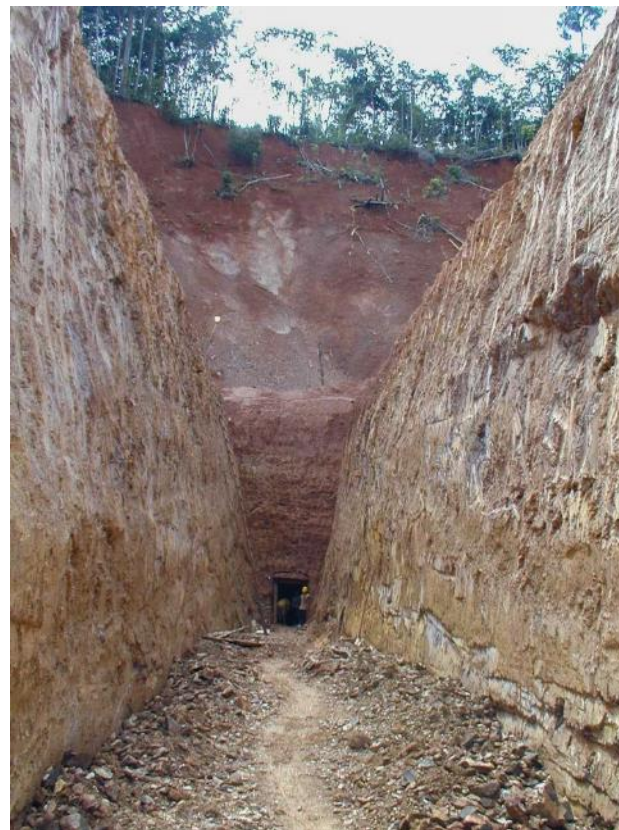


# Dorlin Gold Project

## French Guiana

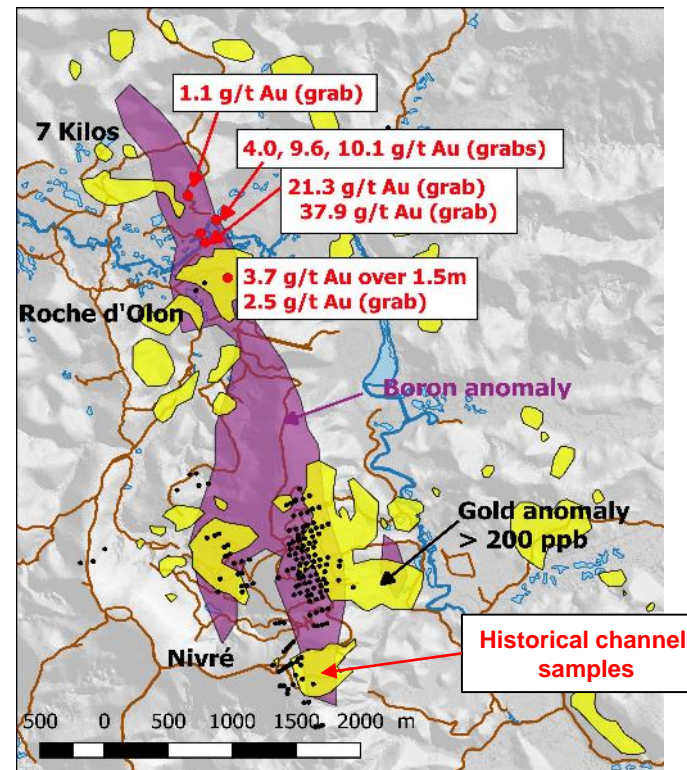


Nivre Mountain artisanal work



# Dorlin Project - Resource validation underway

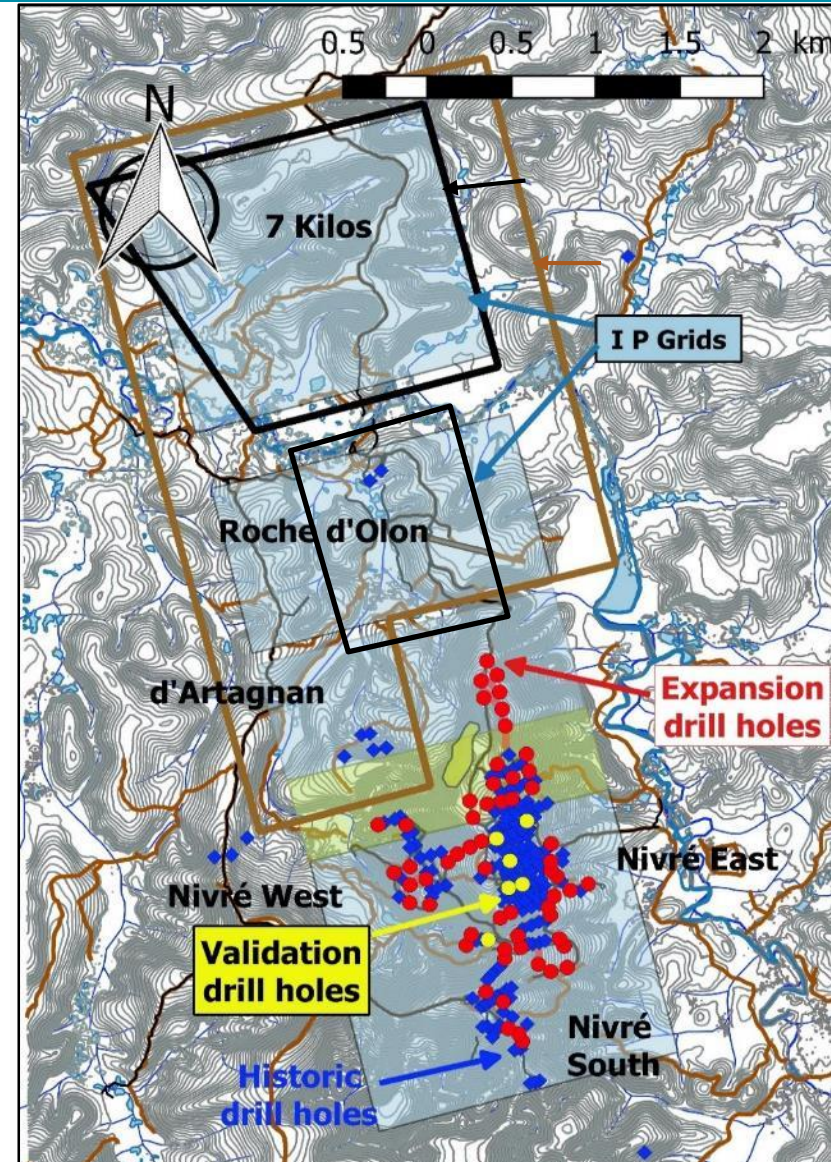
- Option to acquire up to **80%** interest from AUPLATA S.A. a 84 km<sup>2</sup> exploitation permit, 190 km SW of Cayenne. Application to renew Dorlin permit in July 2015 and still pending
- Access to the project site by road, river and air.
- Project area underlain by a Proterozoic greenstone belt hosting numerous small gold workings.
- Area was previously explored by BRGM/BHP, Guyanor and Cambior Inc. Total of 25,366 m (183 holes) in diamond drilling, mostly on Nivre Mountain target.



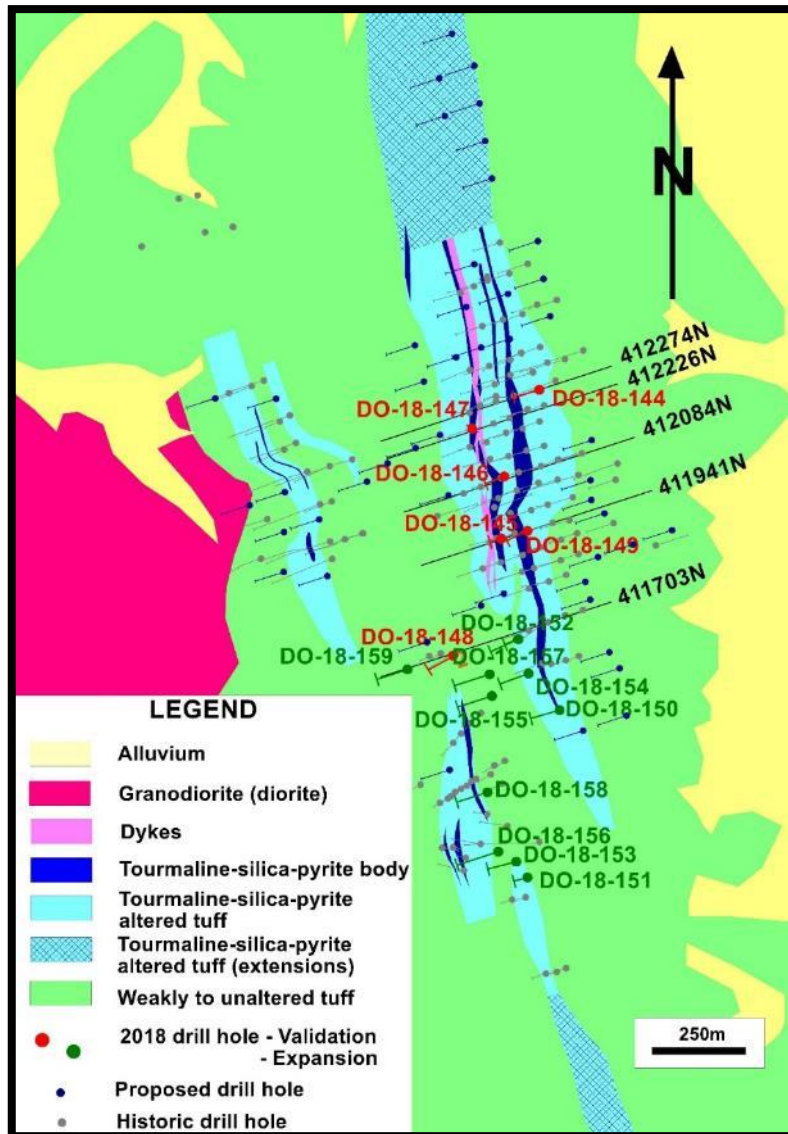
Dorlin Gold Project - 2018			
Q1	Q2	Q3	Q4
Drill permitting		Drilling (Nivre Mountain)	
Relogging - resampling		IP survey	
	Mapping & Sampling	Regolith Geochemistry	
		43-101 resources validation	

# Dorlin – Exploration Program

- Validation of Guyanor core - *Completed*
- Drilling phase 1 (8,000 m)
  - Nivré validation drilling - *Completed*
  - Nivré extension drilling- *Underway*
- IP surveys - *September-October*
- Deep auger on IP anomalies - *October*
- Historical data validation - *Q3 2018*
- Extension phase 1 drilling & NI 43-101 resource estimate - *4Q 2018*
- Drilling phase 2 – *Q1 2019*
  - Nivré – 7 Kilos – Roche d'Olon



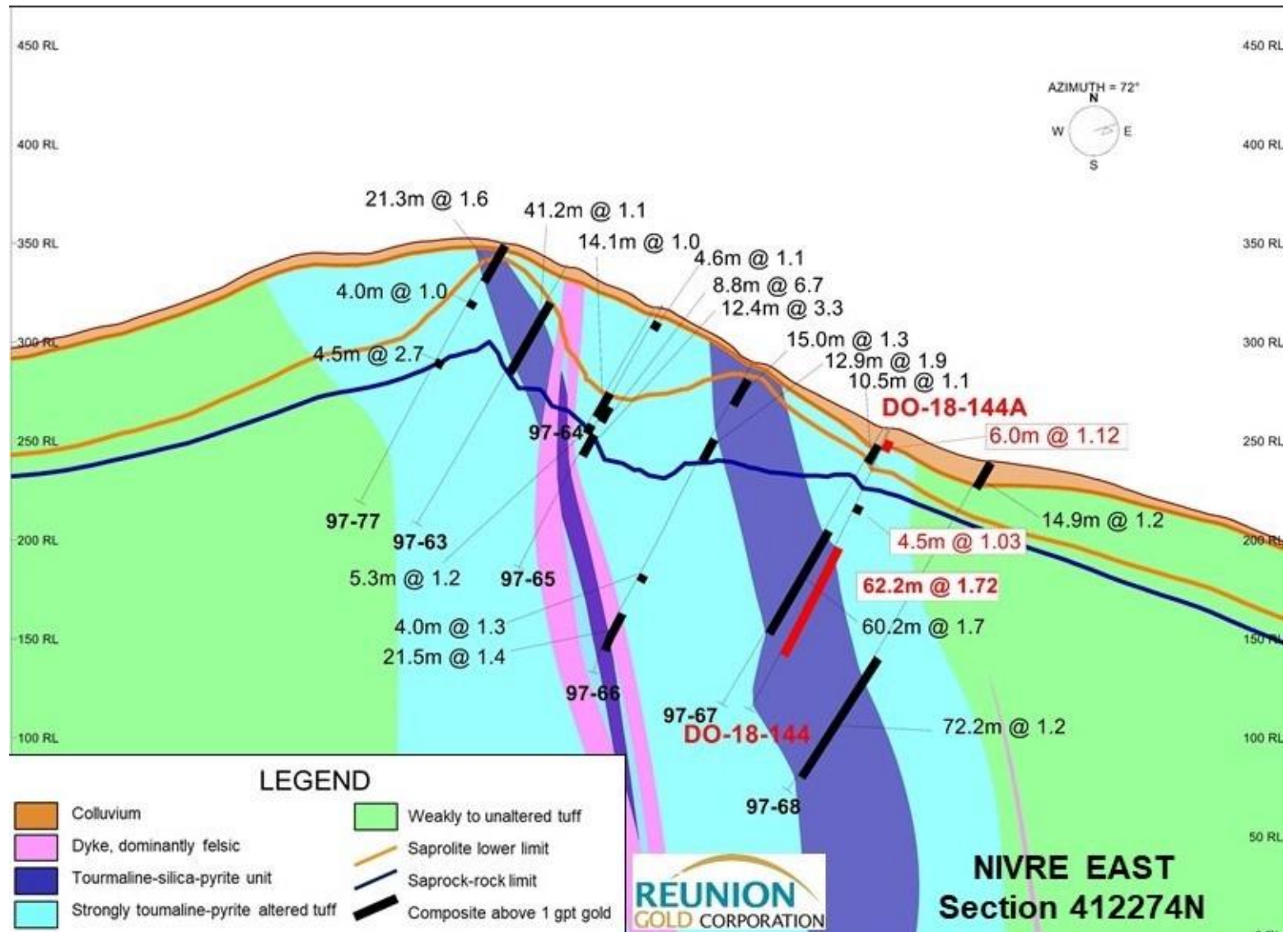
# Dorlin – Nivré validation drilling completed



- Six « near twin » holes selected by resource QP so that entire mineralized sections could be compared.
- Total of 760 m of core.
- Core drilling with HQ-size rods in saprolite and NQ-size rods in rock. Half-core samples analyzed by MS Analytical laboratory in Guyana.
- There is very good overall consistency between lithologies and gold mineralization between historical and duplicate holes.
- The geological information from historical and validation drill holes can be reliably used to do a new resource estimate in accordance with the NI 43-101. Expect NI 43-101 report by year end.



# Dorlin – Nivré validation drilling completed



## Highlights:

- **1.72 g/t** gold over **62.2 meters** in DO-18-144 from 65.8 meters comparing with 1.69 g/t gold over 60.2 meters from 59.0 meters in historical hole 97-67.
- **1.92 g/t** gold over **18.2 meters** in DO-18-145 from 18.8 meters comparing with 15.5 g/t gold over 9.5 meters from 18.5 meters in historical hole 97-100;
  - When cut to 10 g/t gold: **1.65 g/t** gold over **18.2 meters** in DO-18-145 compares with 3.92 g/t gold over 9.5 meters from 18.5 meters in historical hole 97-100.
- **1.96 g/t** gold over **69.0 meters** in DO-18-146 from collar comparing with 1.36 g/t gold over 47.45 meters from 13.7 meters in historical hole 97-37.
- **1.37 g/t** gold over **17 meters** in DO-18-148 from 77.0 meters and 1.76 g/t gold over 24 meters in DO-18-148 from 102.0 meters and comparing with 1.31 g/t gold over 47.25 meters from 77.9 meters in historic hole 97-43.
- **2.54 g/t** gold over **85.00 meters** in DO-18-149 or 2.17 g/t Au over 102.00 meters in DO-18-149 from collar, comparing with 1.69 g/t gold over 102.5 meters from collar in historical hole 97-104, including some dilution.

# Nivré historical resource estimate - Updated NI 43 101 in 4Q 2018



*The resources reported herein are provided as historical data only. A qualified person has not completed the work necessary to verify the quality of the historic exploration data or to classify the historical estimate as current mineral resources or mineral reserves. Reunion is not treating the historical estimate as current mineral resources or mineral reserves and the historical data should not be relied upon until they have been verified.*

Sector	Categories	Saprolite		Transition & Rock		Combined Rock Types		Total gold
		('000 t)	(g/t)	('000 t)	(g/t)	('000 t)	(g/t)	(ounces)
Nivré Ouest	Meas. & Indicated	577	1.2	2,639	1.4	3,216	1.4	143,200
	Inferred	645	1.5	3,734	1.6	4,738	1.6	222,700
Nivré Est &	Meas. & Indicated	7,941	1	10,748	1.1	18,689	1.1	635,800
Nivré Sud	Inferred	5,827	0.8	11,787	1.1	17,614	1	570,000
<b>TOTAL</b>	<b>Meas. &amp; Indicated</b>	<b>8,518</b>	<b>1</b>	<b>13,387</b>	<b>1.2</b>	<b>21,905</b>	<b>1.1</b>	<b>779,000</b>
	<b>Inferred</b>	<b>6,472</b>	<b>0.8</b>	<b>15,521</b>	<b>1.2</b>	<b>21,993</b>	<b>1.1</b>	<b>792,700</b>

*In-situ* recoverable resources at US\$ 400/oz Au (April 1998)

In saprolite with stripping ratio of 0.5: 1, in saprock with stripping ratio of 1.7: 1.

Source: "Compilation Report, Dorlin Gold Project", French Guiana, Guyanor Resources S.A., 1998



# Boulanger Gold Project

## French Guiana



- Re-log and resample Carapa (Ste-Marie) core- *in progress*
- Heliborne magnetometer/radiometrics survey - *October*
- IP survey at Doyle – Carapa– Devez- *line cutting in progress*
- Deep augering on geophysical targets - *November*
- 1st drill program at Doyle- *Completed*
  - Confirm historical results
  - Collect new structural information
- Develop new targets by prospecting- *in progress*

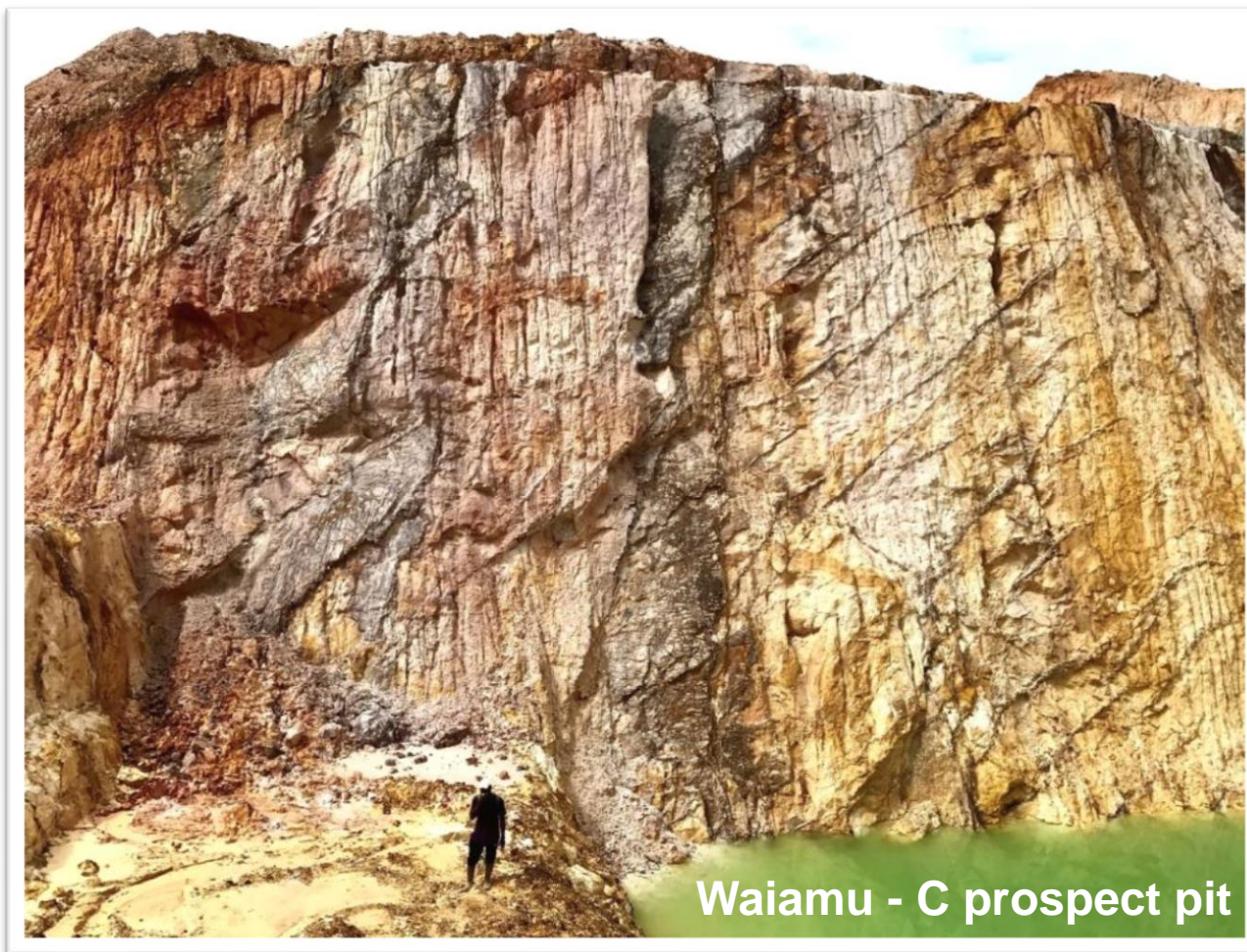
# Boulanger Project – Doyle recent drill results

Prospect	Drill Hole	From (m)	To (m)	Length (m)	True width (m)	Au (g/t)
Doyle 2	CB-18-01A <i>including</i>	12.15	15.00	<b>2.85</b>	2.68	<b>5.22</b>
		13.30	15.00	<b>1.70</b>	1.60	<b>8.46</b>
Doyle 2	CB-18-02A	<i>No significant results</i>				
Doyle 2	CB-18-03 <i>including</i>	8.00	15.50	<b>7.50</b>	6.53	<b>2.91</b>
		12.00	15.50	<b>3.50</b>	3.05	<b>5.03</b>
Doyle 2	CB-18-04	<i>No significant results</i>				
Doyle 1	CB-18-05	91.50	93.00	1.50	1.35	1.12
Doyle 1	CB-18-06	47.00	48.00	1.00	0.92	2.41
		52.70	53.25	0.55	0.49	1.94
Doyle 1	CB-18-07	<i>No significant results</i>				
Cr. Filon	CB-18-08 <i>and including</i>	55.80	58.50	2.70	2.08	2.92
		90.40	96.50	<b>6.10</b>	3.05	<b>12.23</b>
		92.00	96.50	<b>4.50</b>	2.25	<b>16.36</b>
Cr. Filon	CB-18-09	64.00	65.50	1.50	0.75	0.52
Doyle 3	CB-18-10 <i>and including</i>	34.50	36.00	1.50	unknown	0.51
		40.76	49.17	<b>8.41</b>	5.97	<b>8.62</b>
		40.76	44.83	<b>4.07</b>	2.89	<b>15.61</b>
Nilson	CB-18-11	<i>No significant results</i>				
Doyle 2	CB-18-12	<i>No significant results</i>				

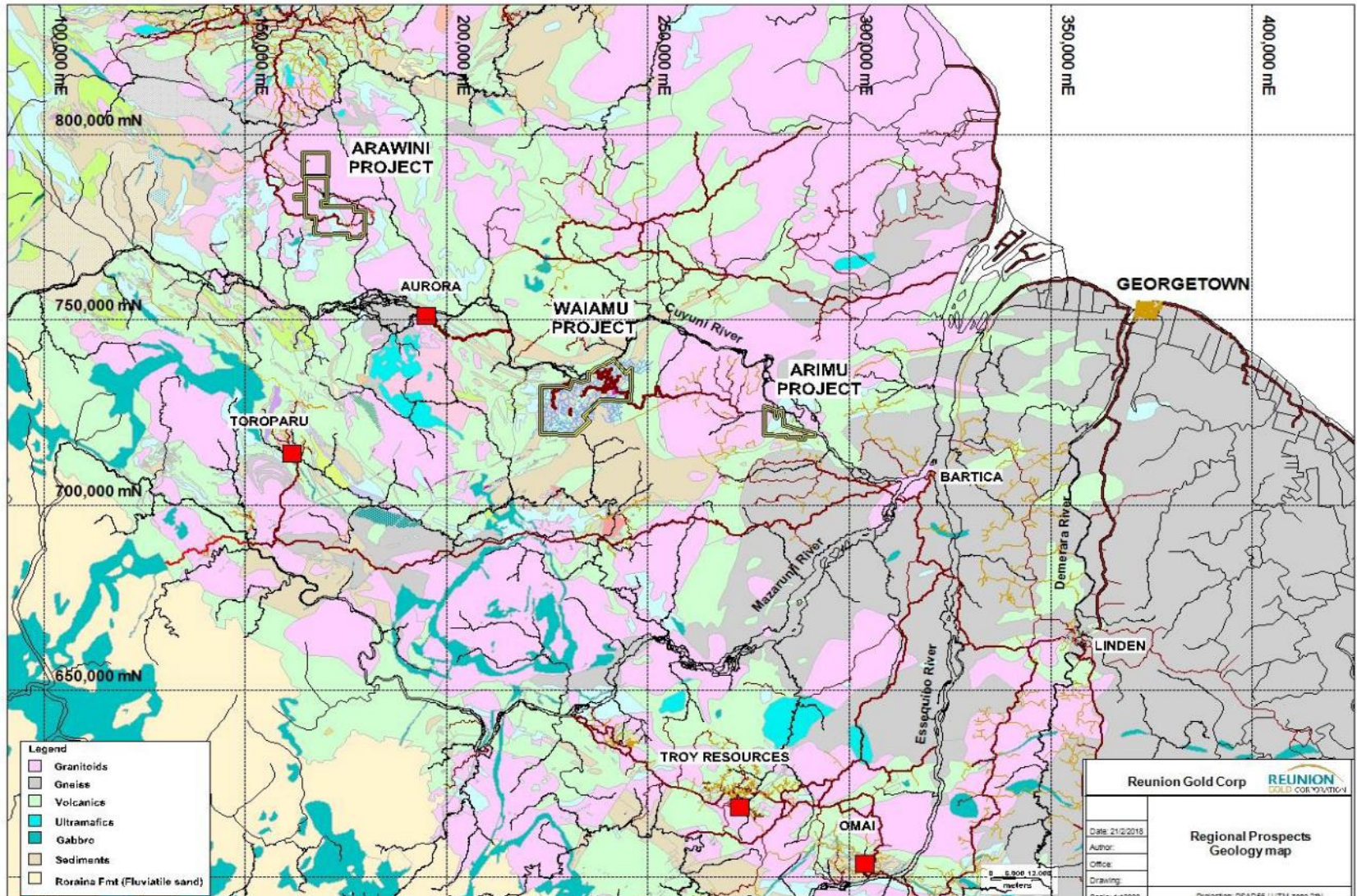


This initial drilling program confirmed the presence of significant gold mineralization in the northeastern corner of the Central Bief concession. These drill results are being interpreted and a better understanding of the local controls of gold mineralization is emerging.

## Gold Projects in Guyana



# Guyana - Project Locations





# Waiamu - New, highly prospective gold system

C prospect pit and trenches



- Small scale miners bulk mining **quartz vein “swarms”** in sedimentary sequence. Gold mineralization similar to Rosebel mine in Suriname.
- Project situated along Cuyuni river, 130 km W of Georgetown. Access bush road from the seaport of Bartica and by boat.
- Option agreement to acquire a 100% interest with a total surface of 39,000 acres licensed to local miners.

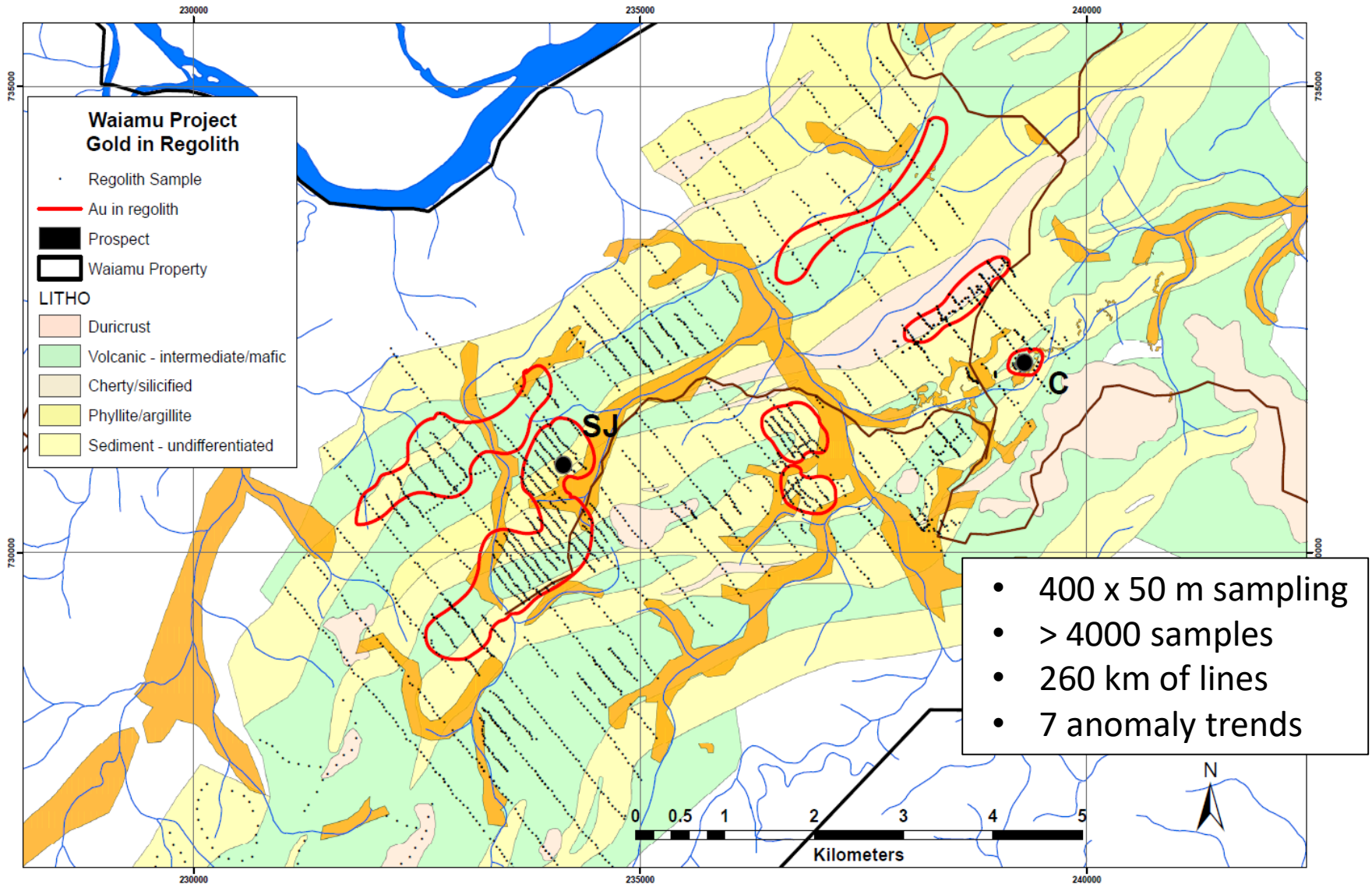
Waiamu Gold Project - 2018			
Q1	Q2	Q3	Q4
	Regolite Geochemistry		
Mapping & Sampling			
		Trenching	
			Drilling

# Waiamu - Exploration program on-going

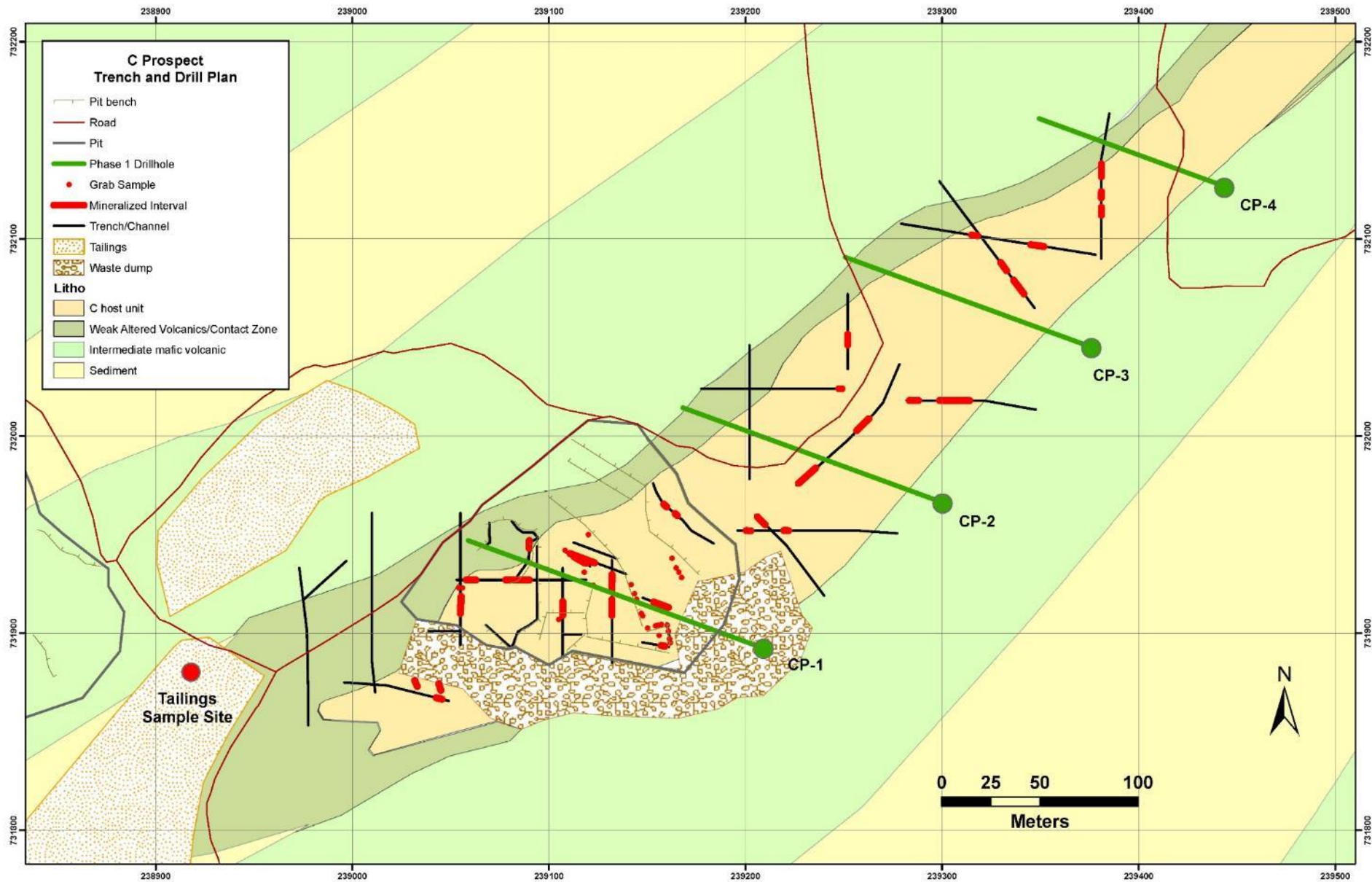
- **Exploration geochemistry** program completed, defined at least seven targets, independent from known artisanal prospects.
- **Helicopter mag and radiometric survey** in September to resolve geology and structures.
- **Trenching**
- **5,000 m drilling program** starting in September 2018 on C and SJ prospects.



# Waiamu - Geology and regolith gold anomalies



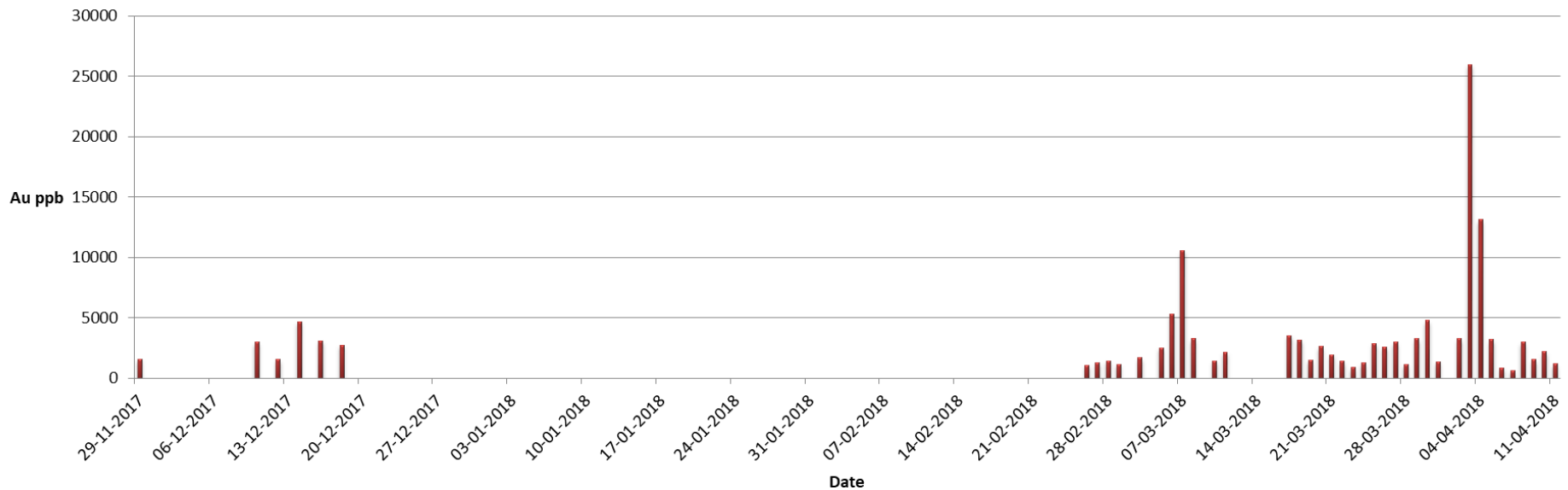
# C prospect channel sampling & drill plan



# C prospect tailings sampling

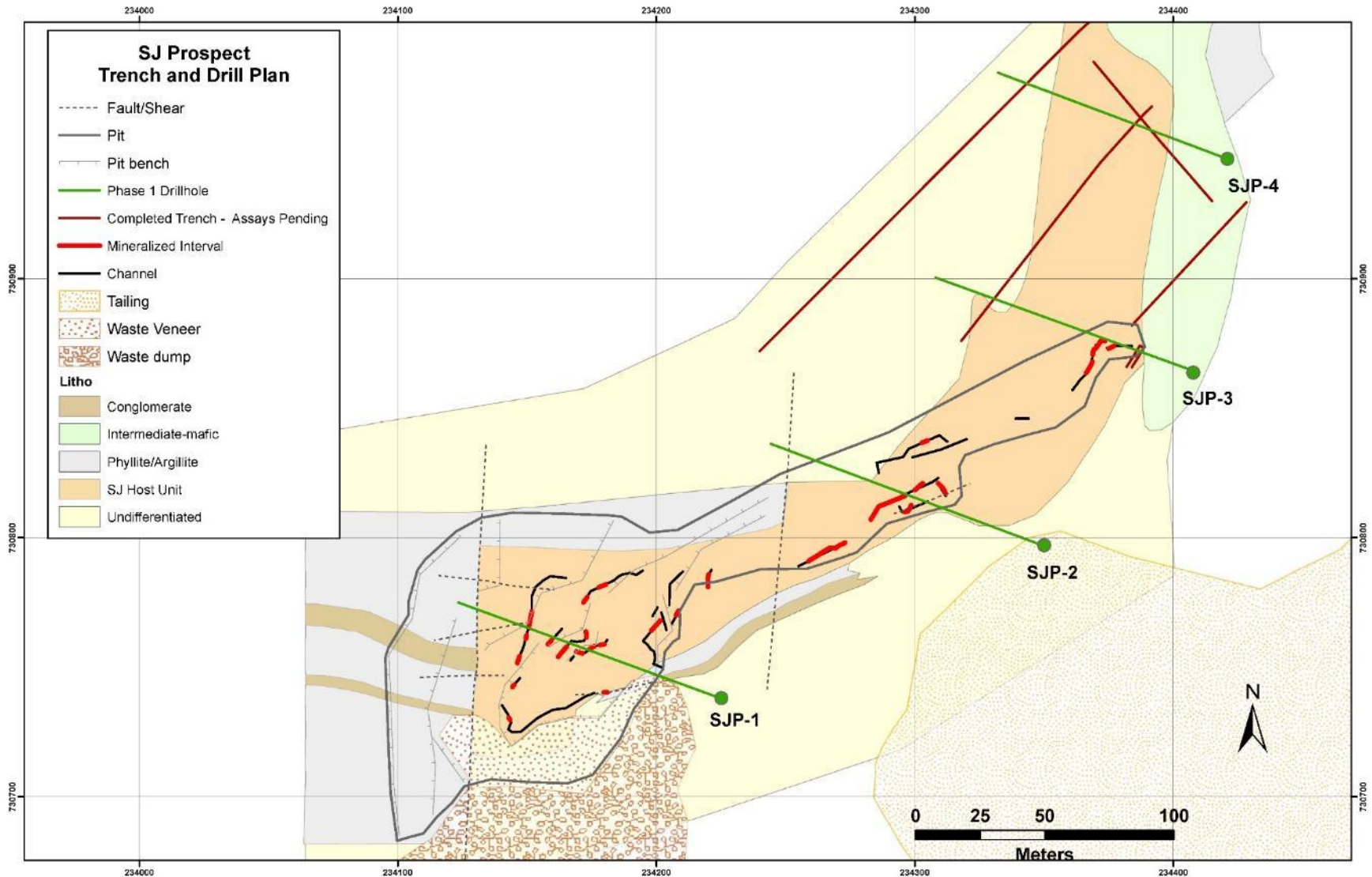
Artisanal gold production from bulk mining of C prospect pit and processing with one hammer mill and two centrifuges

*Graphical representation of daily gold content of C prospect tailings samples*

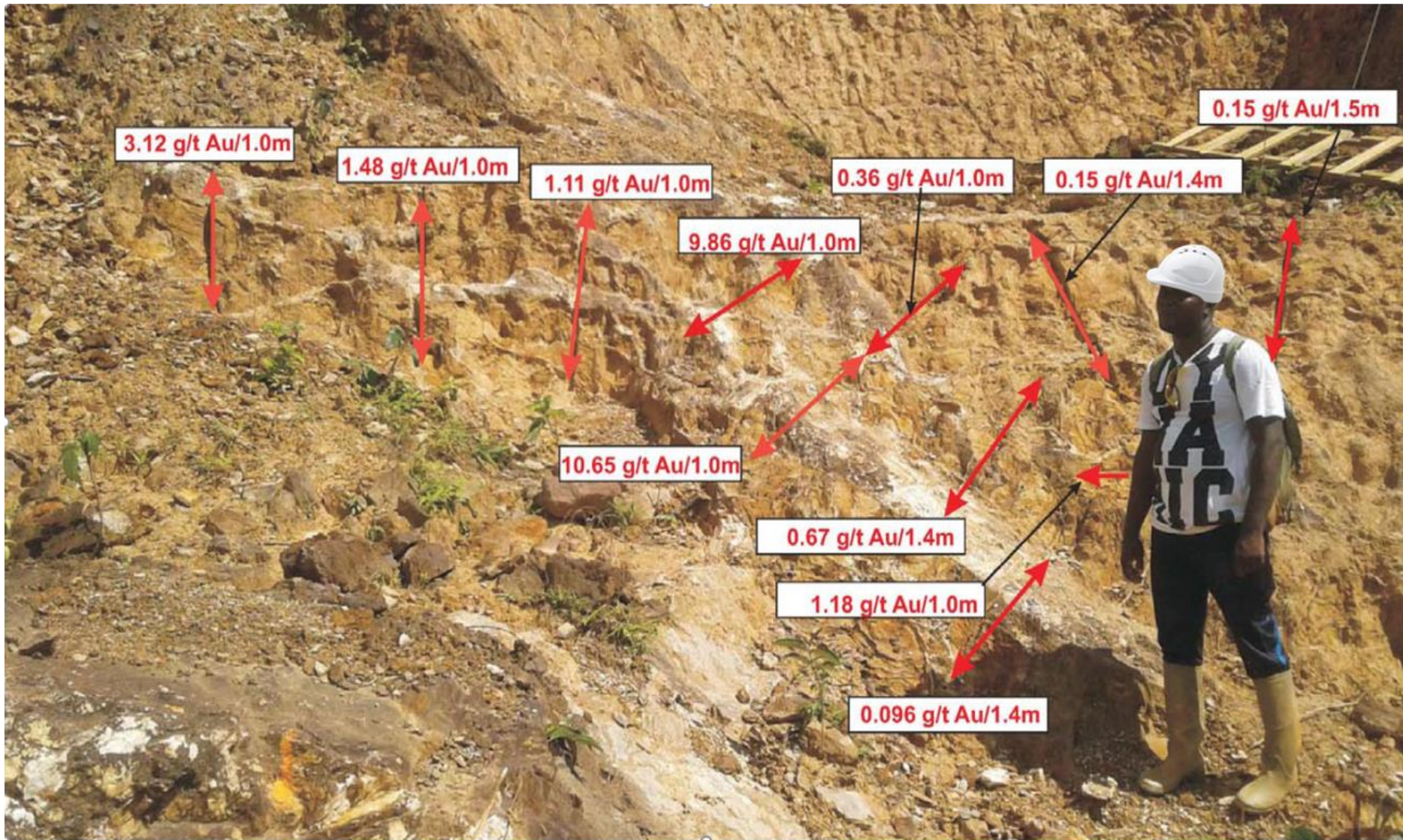


**Average daily tailing grade from Nov. 29, 2017 to April 11, 2018 = 3.3 g/t Au.**

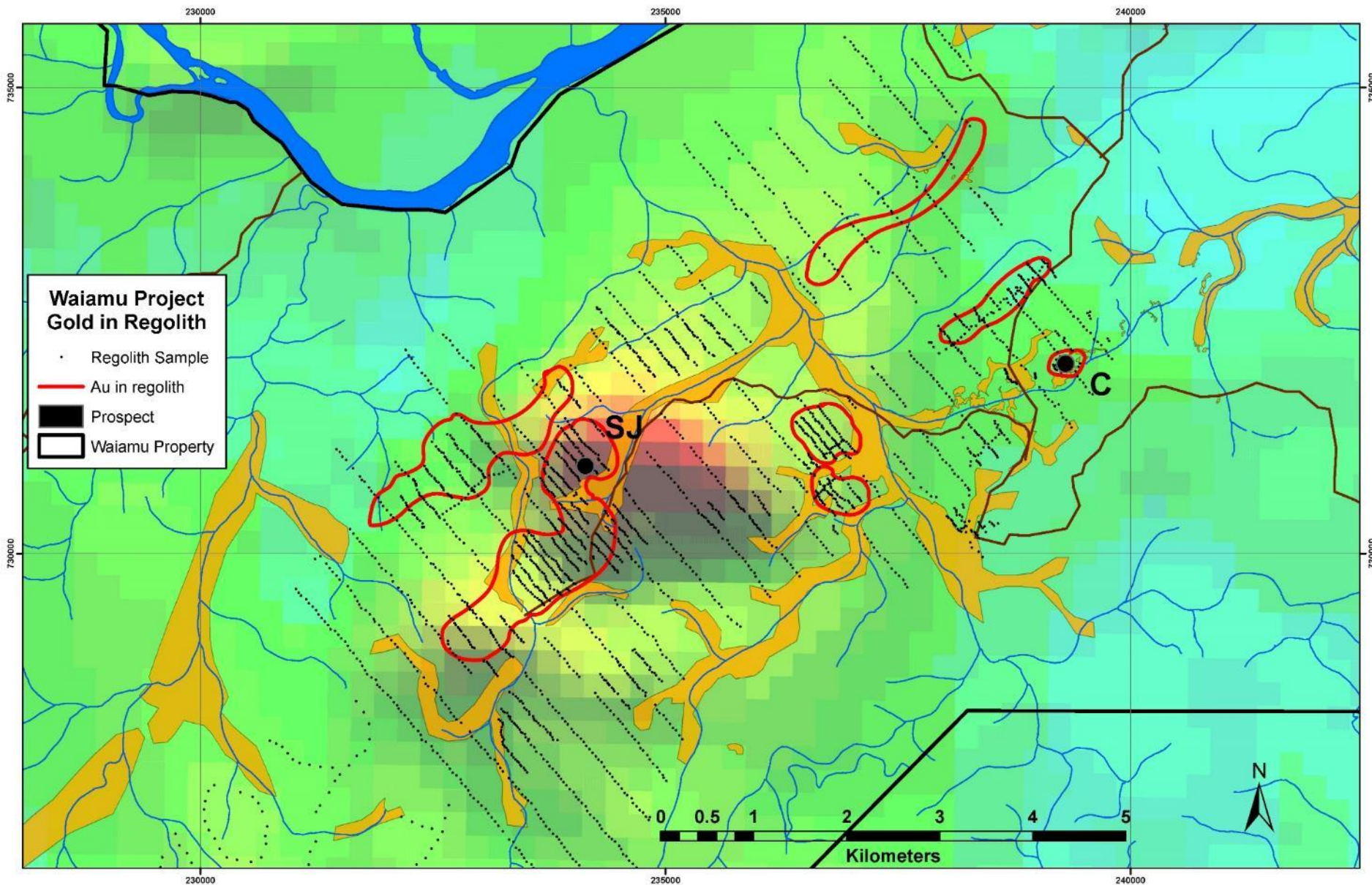
# SJ prospect – trenching and drilling program



# SJ prospect – trench channel sampling



# Regolith anomalies and historical mag (RTP)







## Contact Information

For more information visit our website at  
[www.reuniongold.com](http://www.reuniongold.com)

Or

contact us directly:

Rejean Gourde, President and CEO

David Charles CFA, Manager Investor Relations and Business Development

E: [info@reuniongold.com](mailto:info@reuniongold.com)

T: 450-677-2585

### **Administrative Offices**

Reunion Gold Corporation

1111 St.Charles Street W., West Tower - Suite 101

Longueuil, Quebec J4K 5G4

T: 450-677-2585 | F: 450-677-2601