

TSX.V:GBR | OTC: GTBDF
September 2018

GREAT  **BEAR**

R E S O U R C E S

***NEW HIGH-GRADE GOLD DISCOVERY IN
RED LAKE, ONTARIO***



Forward Looking Statement

Except for historical information contained herein, this presentation may contain forward-looking statements including but not limited to comments regarding predictions and projections. Forward-looking statements address future events and conditions and therefore involve inherent risks and uncertainties. Although Great Bear Resources Ltd. (GBR) believes that such expectations are reasonable, there can be no assurance that such expectations will prove to be correct, and therefore actual results may differ materially from those currently anticipated in such statements. You are cautioned not to place undue reliance on any such forward looking statements, whether made in this presentation or in any question and answer period related to this presentation.

Qualified Person

R. (Bob) Singh, P.Geo, is the Qualified Person as defined by NI 43-101 standards responsible for reviewing the technical content of this presentation.

Recent Developments



CORPORATE TIMELINE

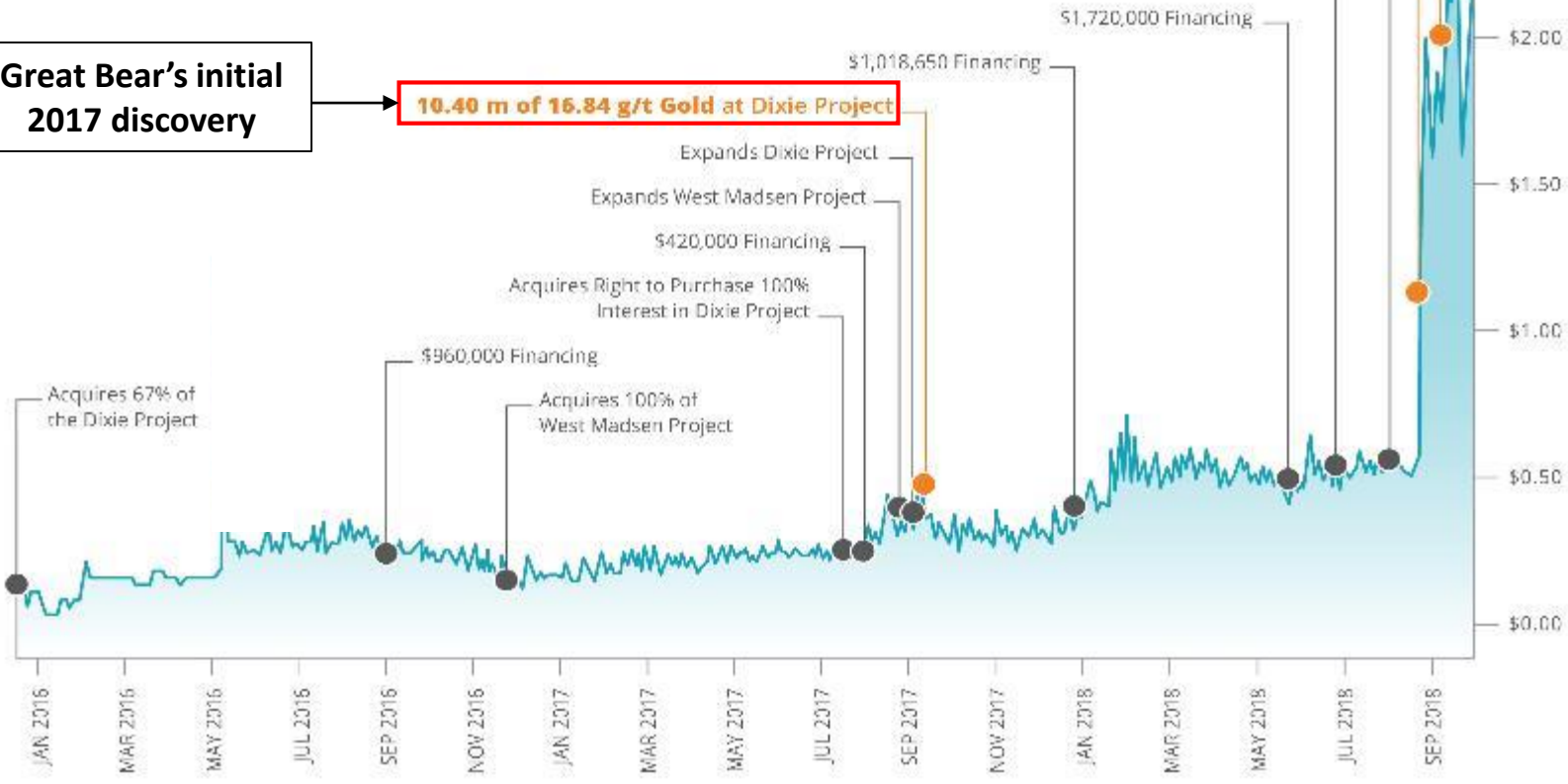
Great Bear's initial 2017 discovery

\$10M Private Placement incl. \$5.7M from Rob McEwen & McEwen Mining
 High-Grade Discovery - **16.35 m of 26.91 g/t Gold and 7.00 m of 44.47 g/t Gold in Two Holes at Hinge Zone, Dixie Project**

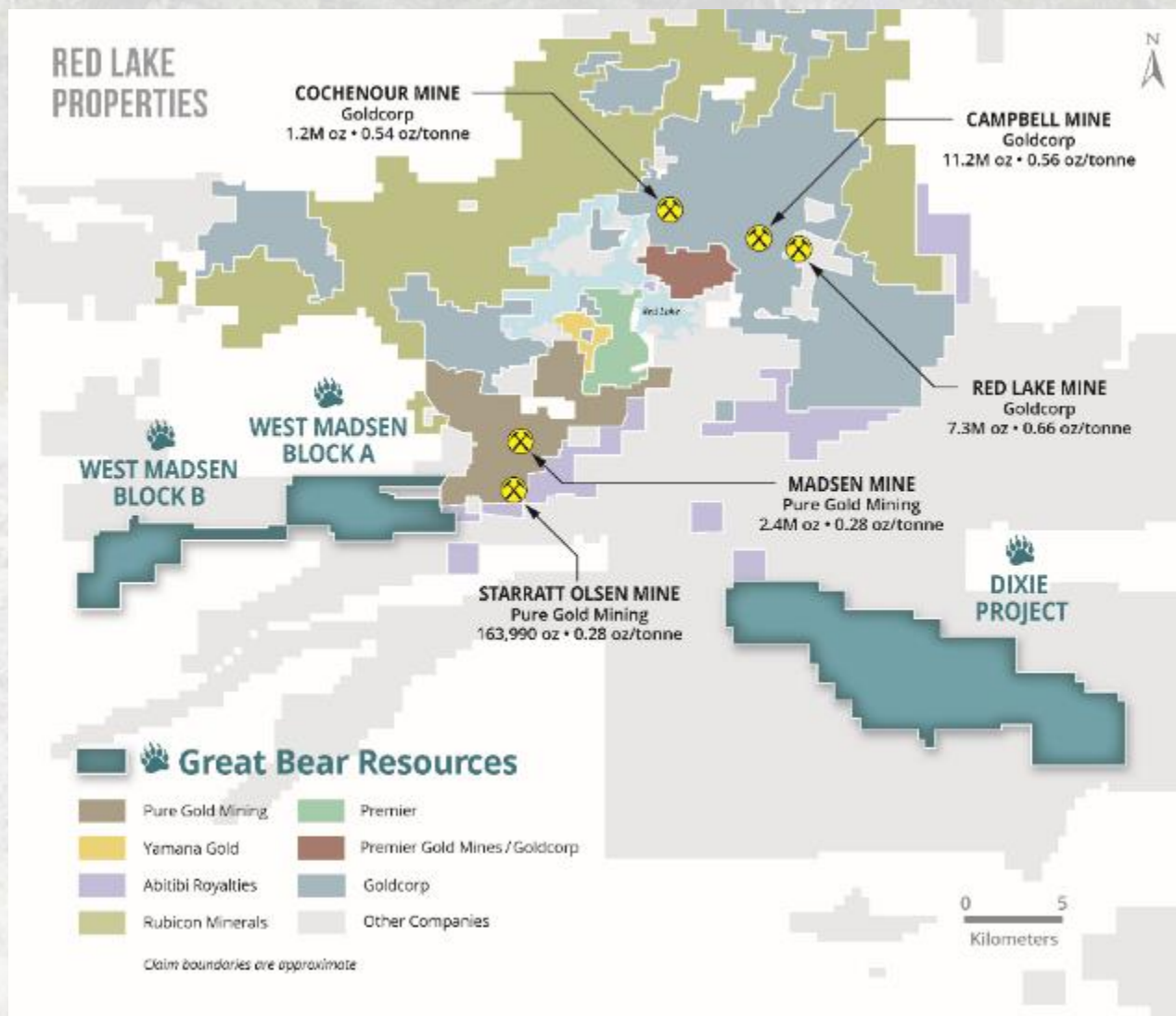
16.80 m of 5.60 g/t Gold incl. 2.70 m of 14.92 g/t Gold at Dixie Project

High-Grade Discovery on a 1.6 Km Step-Out Hole, and Additional Near Surface Interval of 40.30 m of 1.73 g/t Gold in Main Drill Area at Dixie Project

10.40 m of 16.84 g/t Gold at Dixie Project



About Great Bear Resources

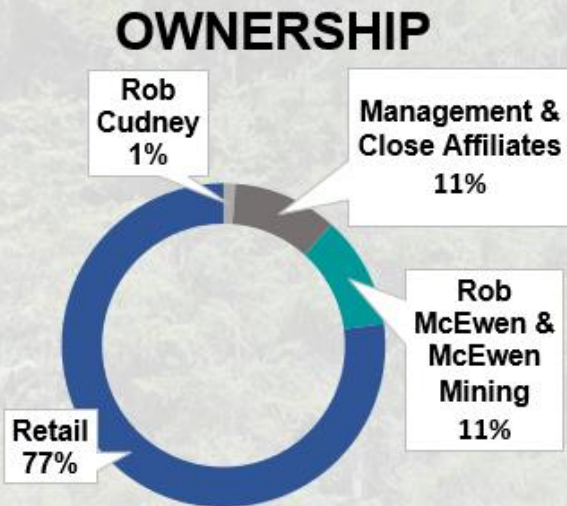


- Advancing precious metals projects in one of the world's premiere mining jurisdictions - Red Lake, ON
- District gold production of over 30,000,000 oz
- 13,000 hectares between 2 projects
 - Dixie
 - West Madsen
- No NSRs on any project
- New high grade, from-surface gold discoveries in 2017 and 2018



Company Ownership

SHARE STRUCTURE	
Shares Outstanding	35,048,661
Warrants (\$0.20 - \$1.75)	8,776,927
Options	3,324,000
Fully Diluted	47,149,588
Cash On Hand	~ \$11,600,000



Member of the Discovery Group, companies that collectively leverage strong industry relationships, global knowledge and proven technical skills, with a history of success with these firms:

A
DISCOVERY GROUP
COMPANY



Approx. \$200,000,000 raised by Discovery Group companies since 2016



Management & Advisors

Chris Taylor

President, CEO & Director

- 20 years experience in the mining industry
- Formerly a geologist with Imperial Metals, Inc., a TSXV company from 2004 to 2009, and was instrumental in the founding of Dunnedin Ventures and Solstice Gold

Bob Singh, B.Sc., P.Geo.

Director, VP Exploration

- Associated with the mineral exploration industry for over 23 years
- Strong technical background in evaluating and exploring gold and base metal systems and has outstanding geological, data management, computer and project management abilities

Rob Scott, CFA, CA Chief

Financial Officer

- 20 years of professional experience in accounting, corporate finance, and merchant and commercial banking
- Founder and president of Corex Management Inc

John Robins, P.Geo.,

Advisor

- Currently the Executive Chairman of Kaminak Gold Corp and a director of Northern Empire Resources Corp.
- Founder of Hunter Exploration, Stornaway Diamond Corp, Kivalliq Energy Corp, North Country Gold Corp. and Kaminak Gold Corp.

Jim Paterson, B.Comm.,

Advisor

- 19 years of corporate experience
- Director of Northern Empire Resources Corp and served as a director of Kaminak Gold Corp. from 2010 to 2016, when Goldcorp acquired Kaminak

David Terry, Ph.D.,

P.Geo., Director

- Professional economic geologist, senior executive and corporate director with more than 25 years of international experience in the mineral resources sector
- Director of Golden Arrow Resources Corporation.

Doug Ramshaw, B.Sc.

(ARSM), Director

- Earned B.Sc. (Hons) Mining Geology from the Royal School of Mines, Imperial College, London.
- For almost two decades Mr. Ramshaw has been a senior executive and a director of several exploration companies

Tony Ricci, CPA, CA,

Director

- CPA with over 25 years
- Former Director and CFO of mining companies including Norsmont Mining & Keegan Resources

A Track Record of Success



Dixie Project – Overview

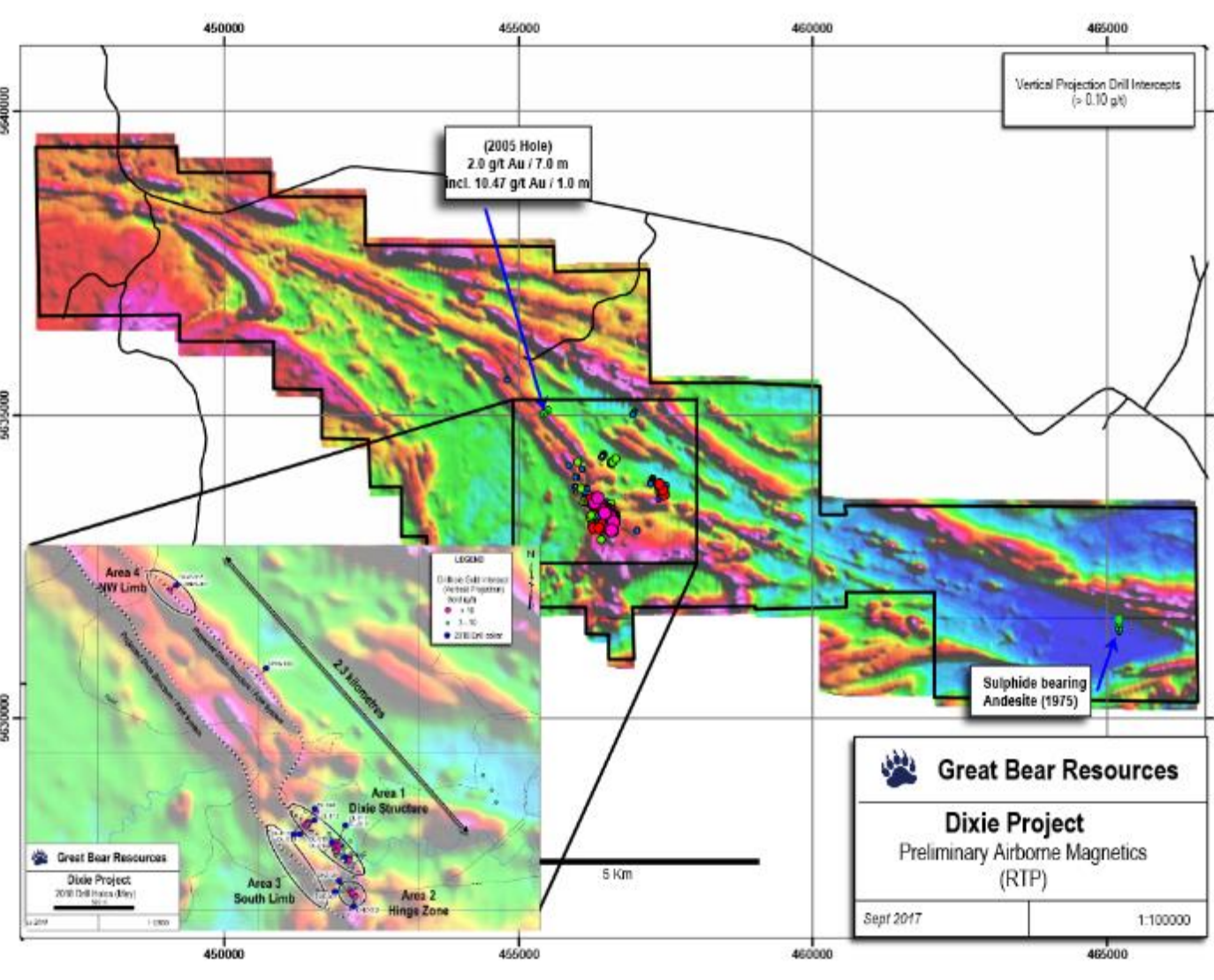
- Similar geological setting to the active mine & exploration projects (Mafic-Felsic sequences) within the Red Lake Greenstone Belt
- *Recent drilling returned:*
 - **16.35 m of 26.91 g/t gold, 7.00 m of 68.76 g/t gold & 10.4m of 16.84 g/t gold** in various zones
- Rapidly growing high grade gold target **goes to surface**
- Cost effective, **road accessible project** – 15 minutes drive from downtown Red Lake, straddles main access highway into town, extensive network of logging roads across properties, allowing all-year access
- Ongoing drill program: **30,000 metres of 150 drill holes** through 2018 - 2019



Dixie – Drill Result Highlights

Hole Number		From (m)	To (m)	Width (m)*	Au (g/t)	Zone
DC-10-07	and	181.83	182.30	0.47	163.75	Hinge Zone
	Including	201.12	203.12	2.00	32.65	
	and incl.	202.12	203.12	1.00	61.97	
		199.30	203.12	3.82	17.22	
DC-08-01R		127.60	129.80	2.20	17.20	
DHZ-003	including	118.30	141.15	22.85	19.33	
	including	124.80	141.15	16.35	26.91	
	including	124.80	137.10	12.30	34.00	
	including	132.05	137.10	5.05	51.39	
	including	127.10	128.10	1.00	112.63	
DHZ-004	including	124.50	131.50	7.00	68.76	
	including	124.50	128.30	3.80	125.84	
	including	124.50	126.50	2.00	228.27	
	including	125.50	126.50	1.00	302.48	
DC-08-01R	Including	127.60	128.90	1.30	22.93	Dixie Limb
DL-04-06		333.30	345.67	12.34	7.54	
	Including	335.42	342.49	7.07	12.26	
	and incl.	335.42	336.88	1.46	40.27	
DL-11-05		132.20	138.50	6.30	10.78	
	including	134.70	138.50	3.80	14.76	
	and incl.	135.80	137.00	1.20	30.48	
DL-005		162.60	173.00	10.40	16.84	
	including	164.60	172.45	7.85	21.53	
	and including	170.75	172.45	1.70	82.54	
	and including	171.40	172.45	1.05	130.10	
DNW-001		52.60	58.20	5.60	3.52	
	including	56.80	58.20	1.40	12.74	
DL-013		47.70	88.00	40.30	1.73	
	including	47.70	50.00	2.30	6.01	
	including	58.00	70.30	12.30	3.13	

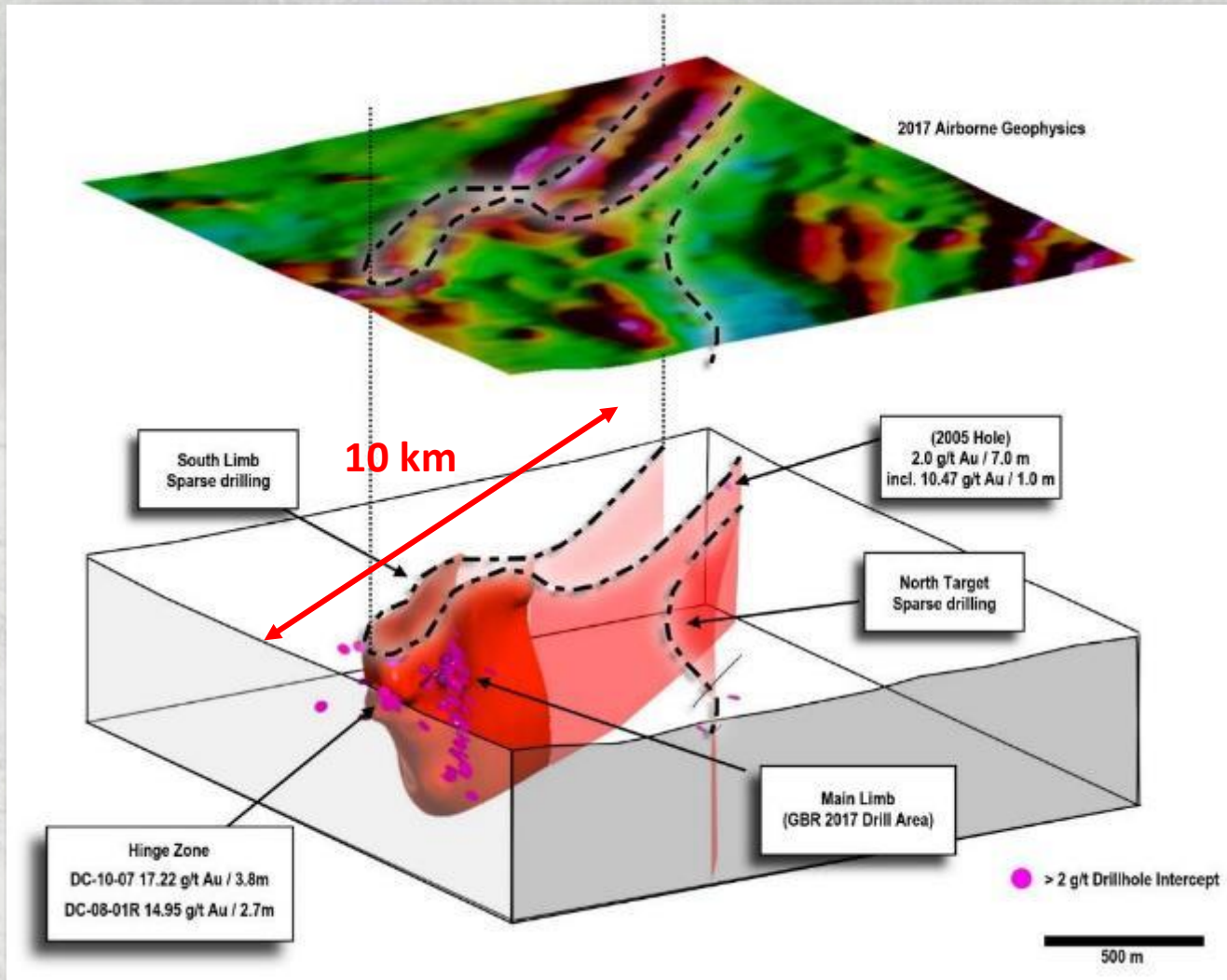
Dixie - New Airborne Geophysics



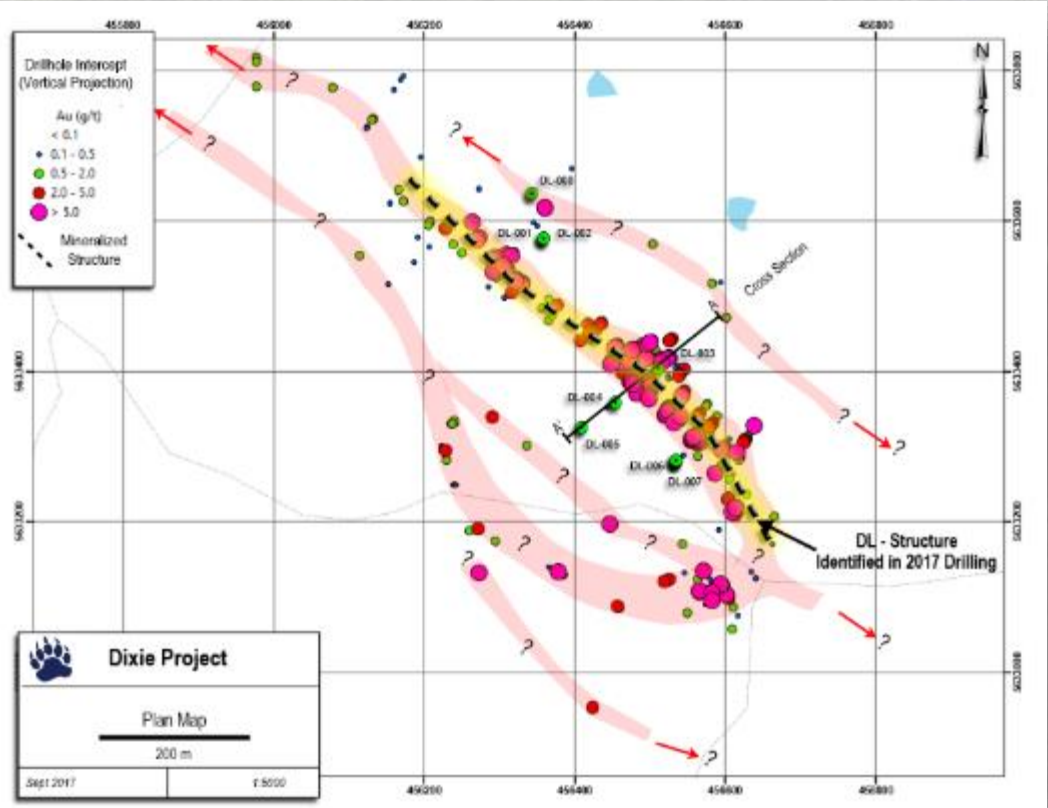
- Claims cover a district-scale gold target
- Primary gold-mineralized units resemble the gold-hosting geology of the main Red Lake district, and extend for over 10 kilometres on Great Bear's property
- This target is fold-repeated, yielding over 20 kilometres strike length of prospective geology to explore

Dixie - On Strike Potential 3D Modeling

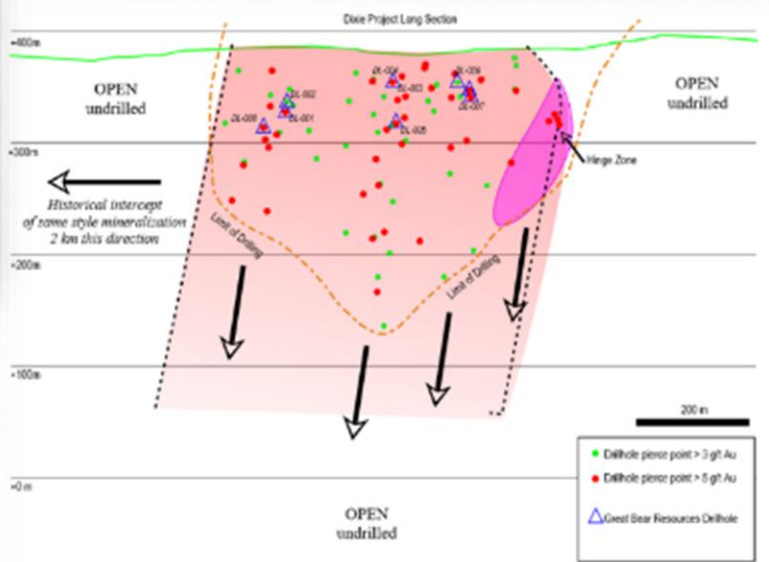
- 3D perspective view looking northwest shows strong correlation between known mineralized zones and geophysical response
- 2.5 kilometres drilled to-date, all 100+ holes hit gold
- More than 17 kilometres of strike length undrilled
- Gold confirmed to 450 metres depth, remains open



Dixie - Gold Zones Map & Long Section



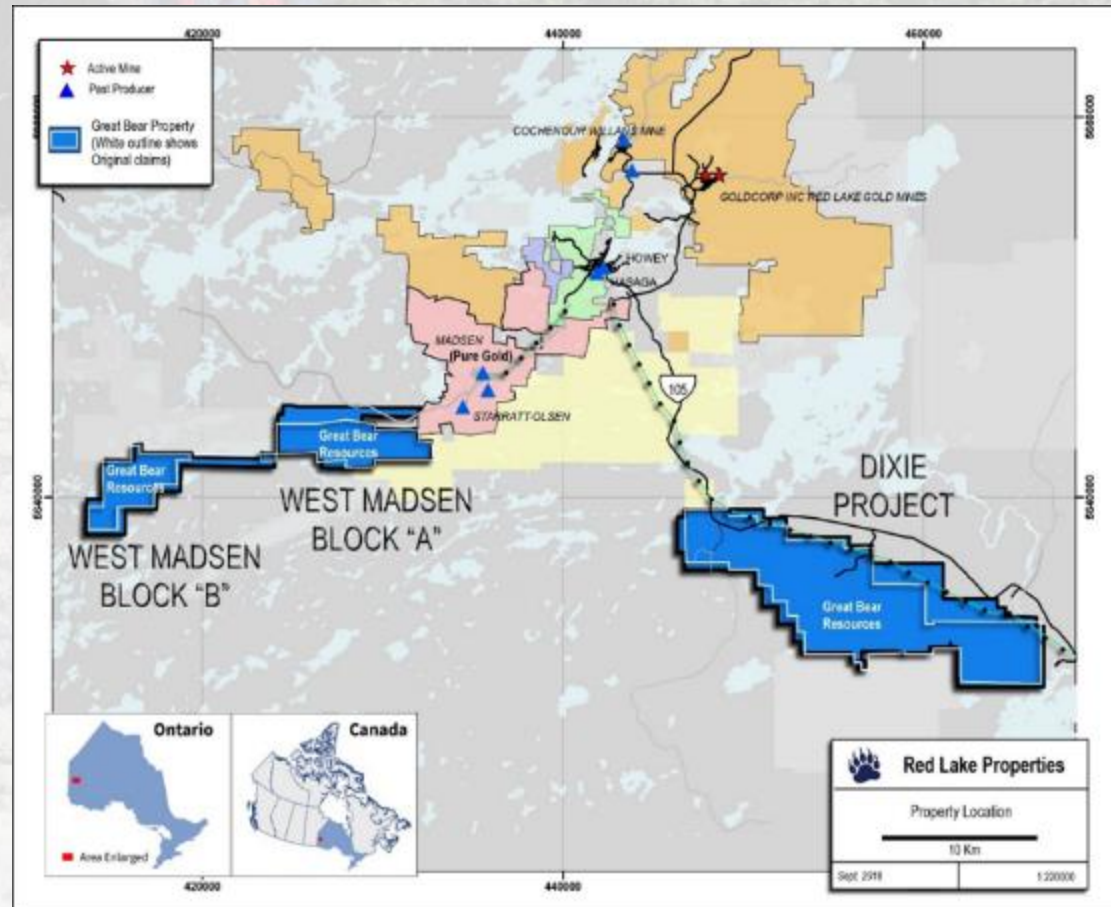
- Key geological controls recognized in 2017 drilling, core-relogging and 3D geological modelling.
- GBR carried out significant data validation, 3D modelling, core re-logging and sampling prior to initiating the drill program.
- Interpretation suggests multiple parallel zones with fold relationships



- Long section looking northeast shows four steeply plunging higher grade gold zones which are open at depth and along strike.
- **All of the 100+ drill holes that have targeted this contact have intersected gold mineralization**

West Madsen Project – Overview

- The West Madsen project comprises of two claims blocks – Block A and Block B. The easternmost (Block ‘A’) an on-strike extension of Pure Gold’s high-grade Madsen project
- Recent expansion of 1,136 hectares for a total of 3,860 for all of West Madsen
- Great Bear buying 100% interest for remaining cash payments of \$124,000 spread over 4 years & 100,000 common shares, no NSRs
- Within Greenstone belt host to the adjacent historical Madsen and Starratt-Olsen mines



Pure Gold's *Wedge Zone*
 (1.5 kilometres east of GBR's West Madsen Block "A" boundary)

- 33.3 g/t Au over 8.3m
- 21.3 g/t Au over 10.3m
- 22.5 g/t Au over 2m
- 15.1 g/t Au over 5.4m
 - Incl. 69.2 g/t Au /1m
- 9.8 g/t Au over 3m

GREAT **BEAR**

R E S O U R C E S

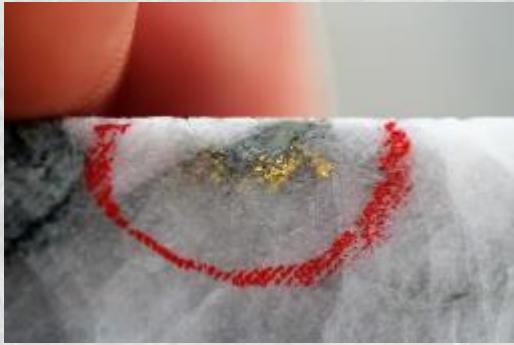
***NEW HIGH-GRADE GOLD DISCOVERY
IN RED LAKE, ONTARIO***

TSX.V: GBR / OTC: GTBDF

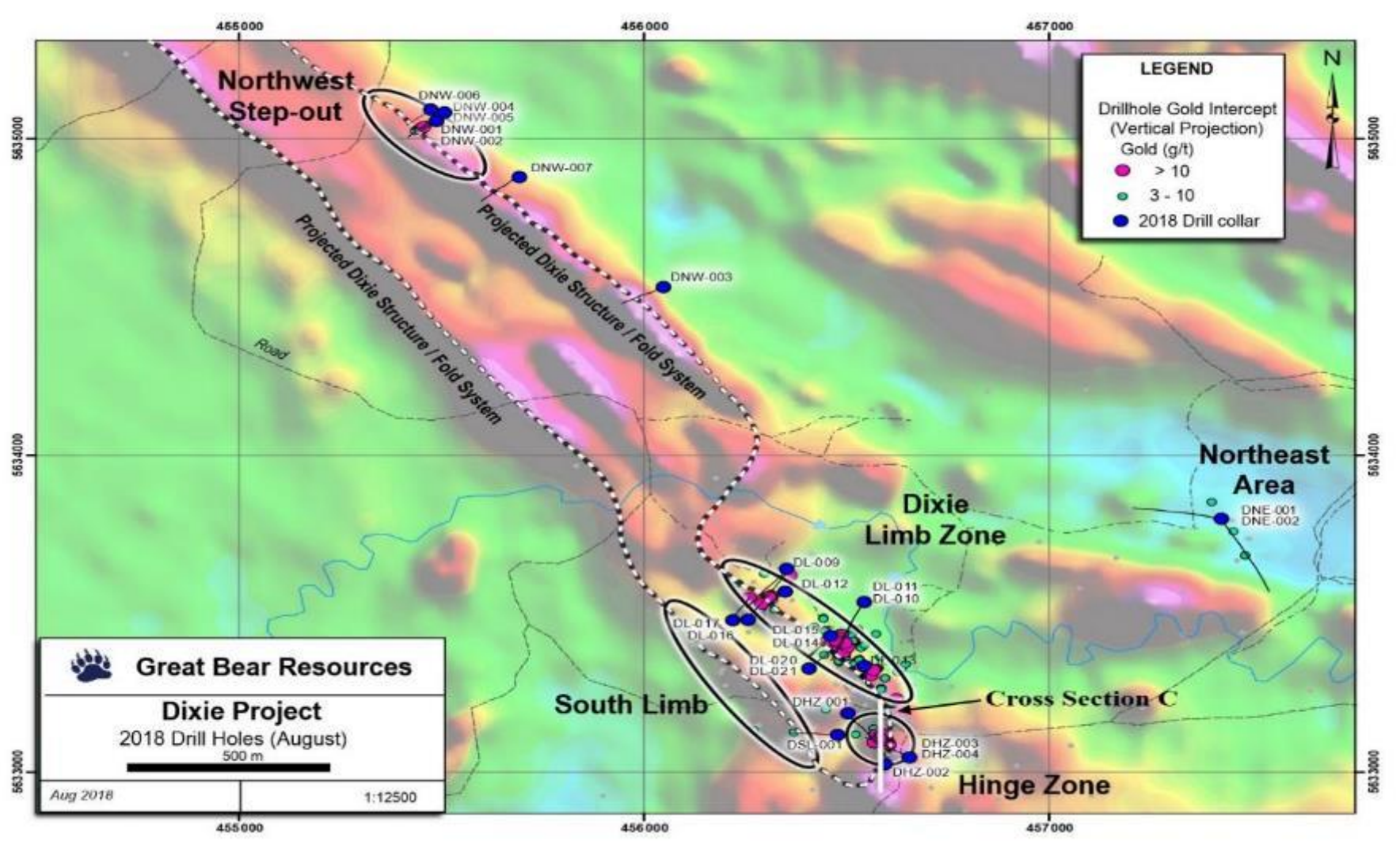
1020-800 West Pender Street
Vancouver, BC V6C 2V6

604 646 8354 info@greatbearresources.ca
www.greatbearresources.ca

Photo Gallery



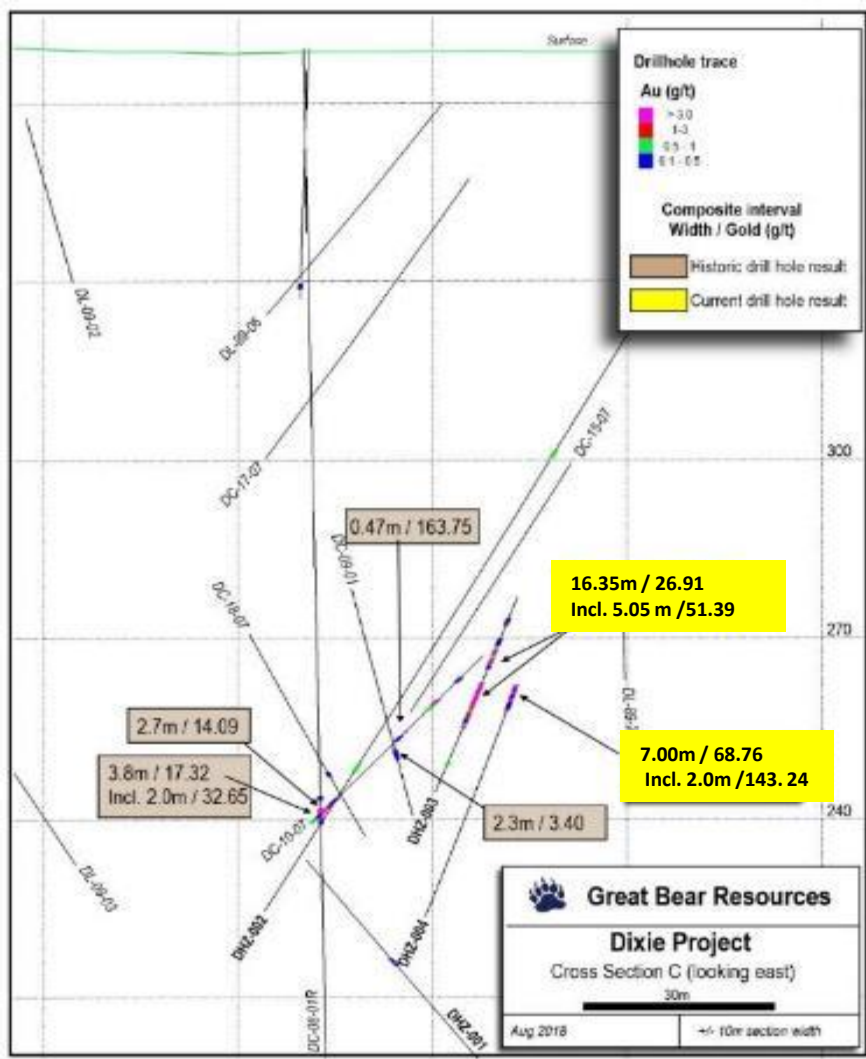
Appendix A: Dixie – Drilling In Progress



Plan map showing the locations of currently reported drill results

Appendix B: Dixie - Cross Section of Hinge Zone

Cross section through the Hinge Zone, showing drill results to-date. Looking East.



Appendix C: Dixie - Cross Section of Limb Zone

Cross section through the Dixie Limb Zone, showing drill results to-date. Looking Northwest.

