



VALUE THROUGH DISCOVERY

# Precious Metals Summit - September 2018

# Forward Looking Information



This presentation includes certain statements that may be deemed "forward looking statements". All statements in this presentation other than statements of historical facts, that address events or developments that Evrim Resources Corp. (the "Company") expects to occur, are forward looking statements. Forward looking statements are statements that are not historical facts and are generally, but not always, identified by the words "expects", "plans", "anticipates", "believes", "intends", "estimates", "projects", "potential" and similar expressions, or that events or conditions "will", "would", "may", "could" or "should" occur.

Although the Company believes the expectations expressed in such forward looking statements are based on reasonable assumptions, such statements are not guarantees of future performance and actual results may differ materially from those in the forward looking statements. Factors that could cause the actual results to differ materially from those in forward looking statements include market prices, exploitation and exploration successes, and continued availability of capital and financing, and general economic, market and business conditions. Investors are cautioned that any such statements are not guarantees of future performance and actual results may differ materially from those projected in the forward looking statements. Forward looking statements are based on the beliefs, estimates and opinions of the Company's management on the date the statements are made. Except as required by securities laws, the Company undertakes no obligation to update these forward looking statements in the event that management's beliefs, estimates or opinions, or other factors, should change.

## 100%-owned Projects

**Male HSE project** in  
Tlisco, Mexico  
Strategic investment of  
\$7.2 million by  
Newmont Mining

## Royalty Portfolio

- Ermitaño deposit\*  
(550,000 ounces gold):  
2% NSR
- Cumobabi project:  
1.5% NSR

## JV/Alliances

- Five exploration  
partnerships
- \$7-\$8 million partne  
funding in 2018
- Up to five drilling  
programs

*Source reported by FR on March 29, 2018 using \$1,450/oz Au; \$20/oz Ag*

## British Columbia

- Golden Triangle BC – Porphyry copper/gold
- South Central BC – Porphyry copper/gold

## Laramide Porphyry Belt, Mexico

- Epithermal gold and porphyry copper/gold

## Sierra Madre Occidental

- Epithermal gold

## Global Alliance in North America



## e – Jalisco, Mexico



High sulphidation epithermal gold target (HSE)

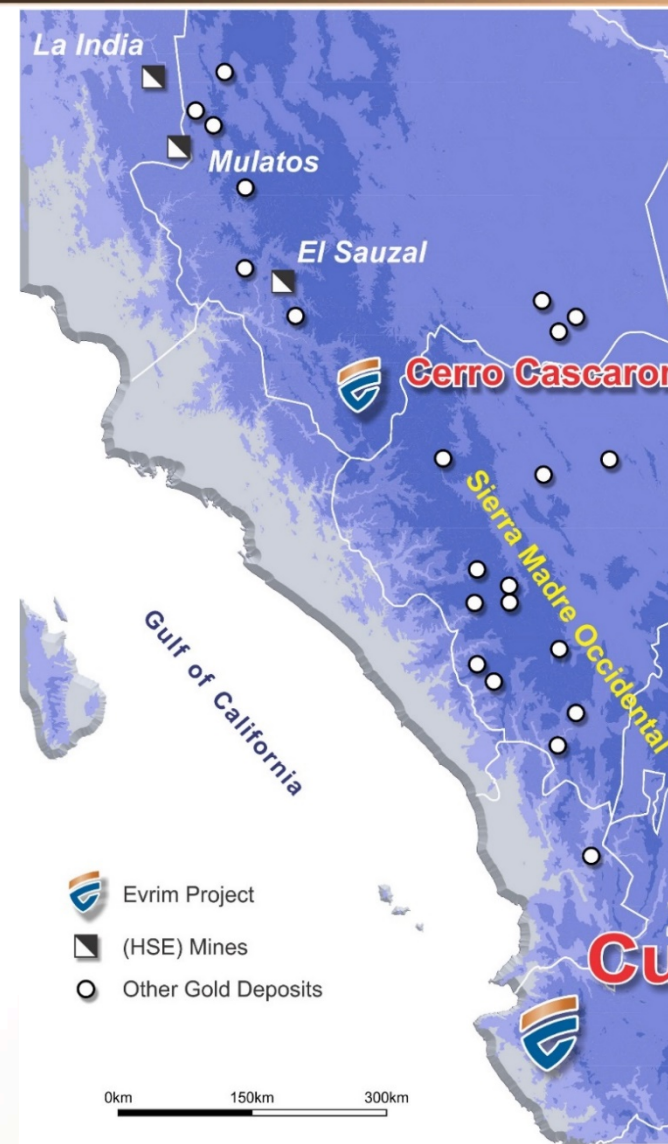
Low cost, large scale, long mine life

Examples of HSE mines in Mexico

- *Mulatos* (5.0M ounces gold)
- *La India* (3.0M ounces gold)
- *El Sauzal* (1.9M ounces gold)

**100% owned by Evrim**

1.5% precious metal and 1.0% base metal royalty payable to Altius Minerals



# e - Location



**hour drive from Puerto Vallarta**

**0 square kilometre claim size**

**cellent infrastructure with roads and  
power crossing the property**

**o previous exploration**

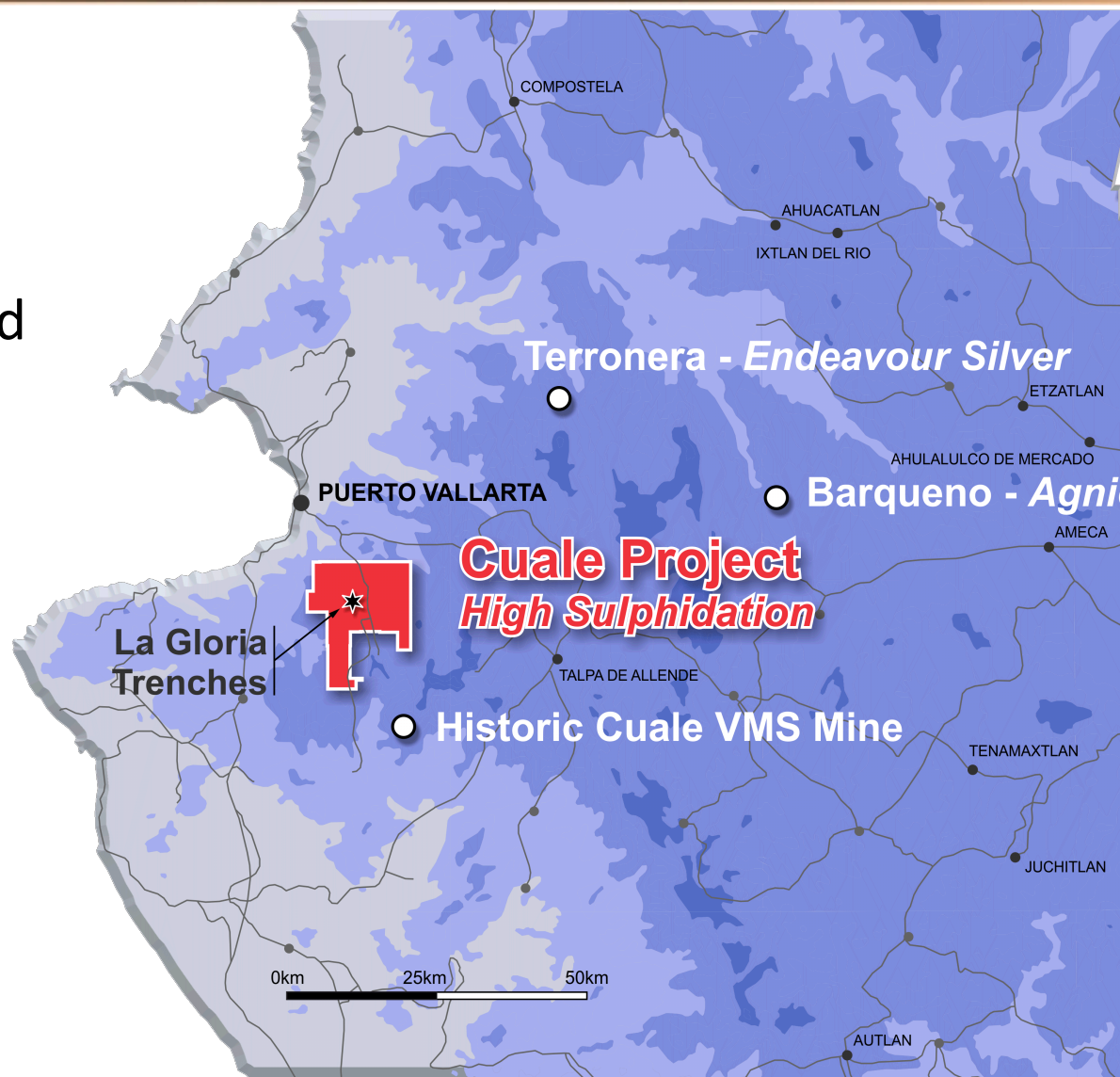
**ble development projects**

**gnico Eagle Mines' Barqueño project**

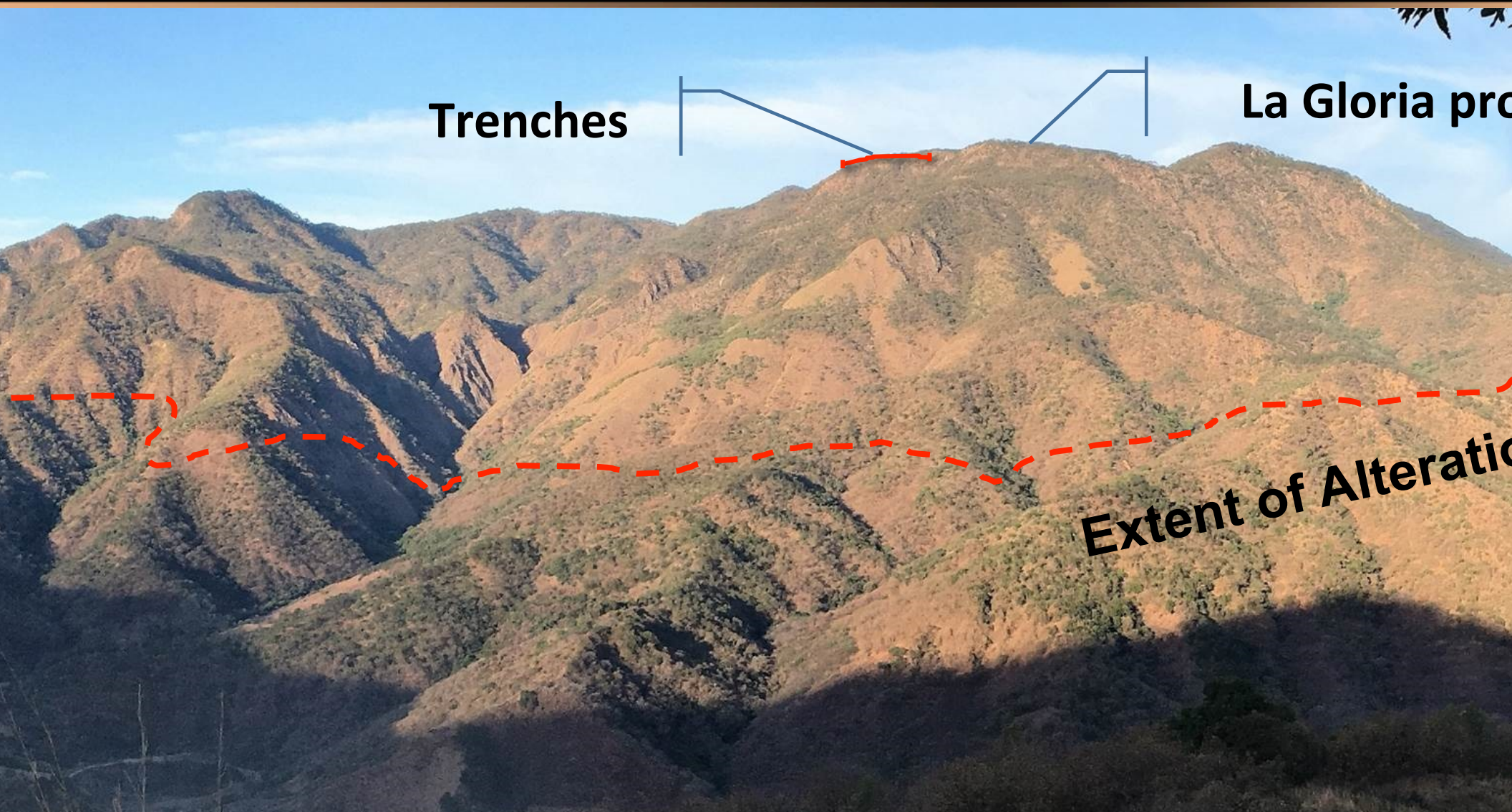
*45,000 ounces of gold and 38 million  
ounces of silver)*

**deavour Silver's Terronera project**

*36,000 ounces of gold and 42 million  
ounces of silver)*



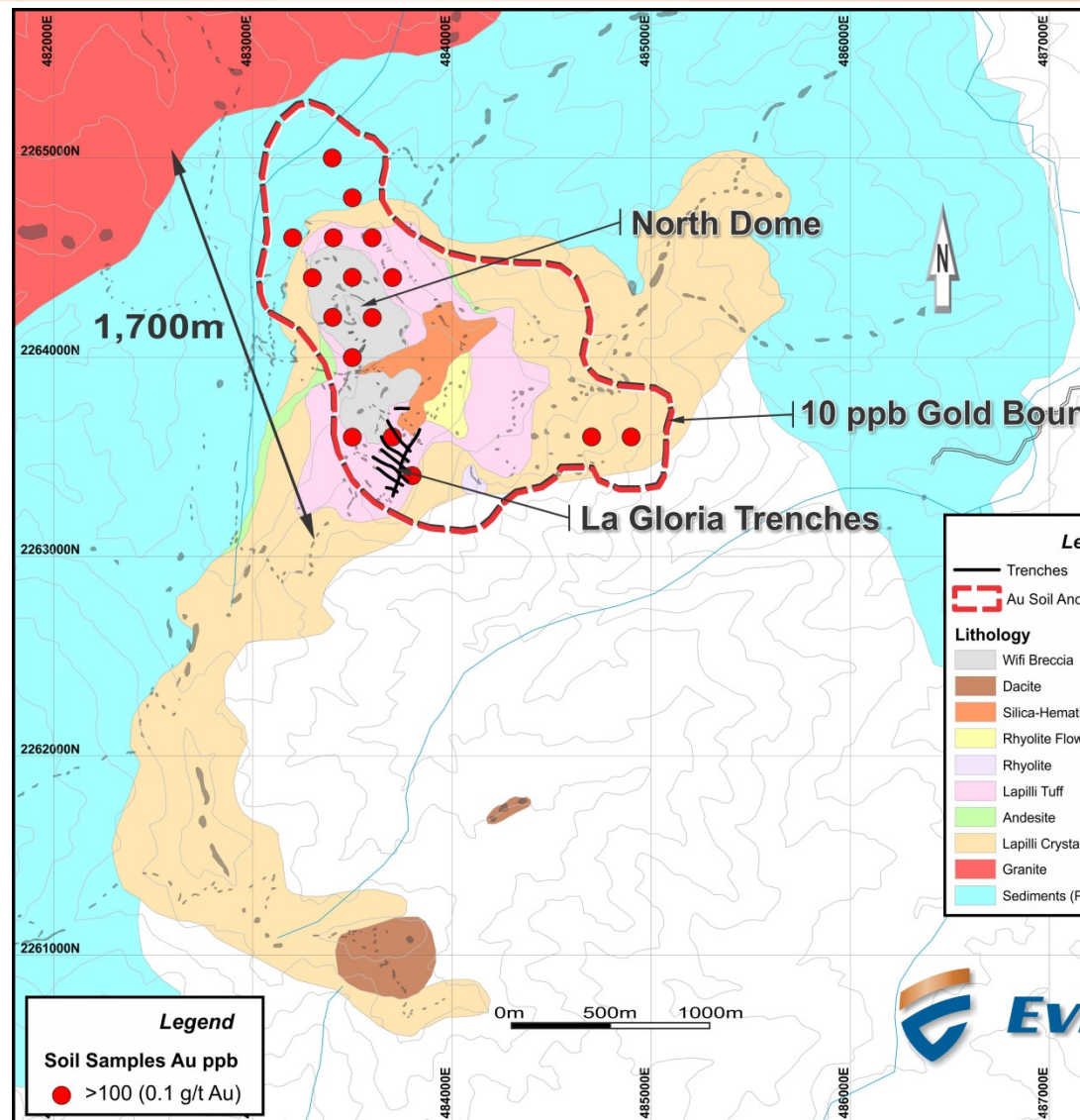
# e – La Gloria Prospect (*looking west*)



# e – Lithology and Soils Map



Mapping defines a 4 km x 3.5 km rhyolitic  
 volcanic centre  
 volcanic centre contains andesite, lapilli  
 crystal tuff, lithic tuff, rhyolite flows,  
 rhyolite and dacite intrusions and multiple  
 hydrothermal breccias  
 vents form a dome field that was actively  
 depositing tuff units and flows before,  
 during and after the formation of a high  
 sulphidation gold system  
 erosion and post mineralization faulting  
 exposed the buried high sulphidation  
 system



# e – Alteration Map



**Mineral Cover:** Not an alteration zone but  
d as the post mineral cover contains abundant  
AA clasts

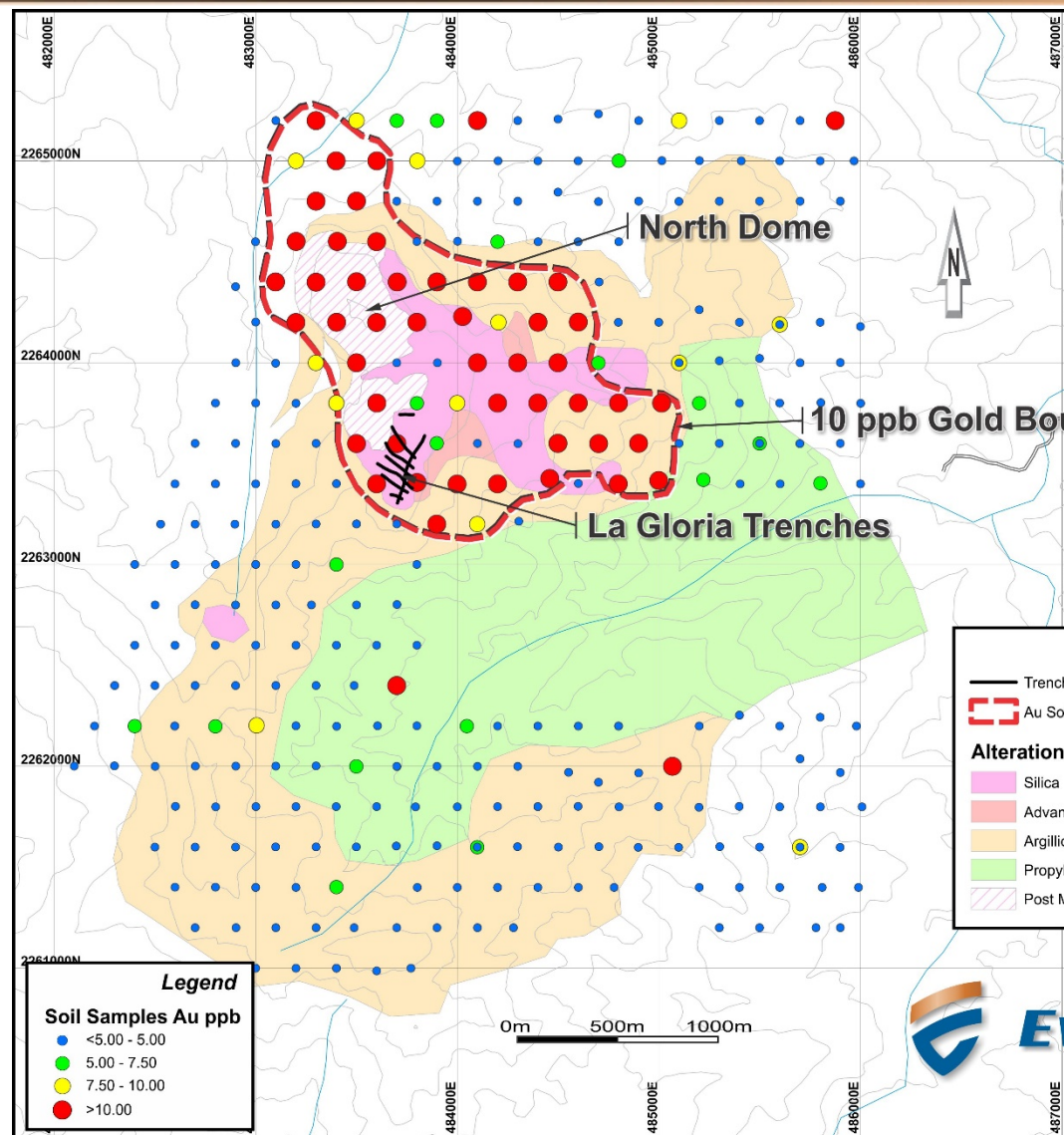
A late milky quartz with specular hematite  
rints the saccharoidal quartz alteration and is  
only associated with drusy quartz veins

Saccharoidal silica with specular hematite  
g from massive to rarely vuggy. This style of  
ion easily breaks to a fine sandy powder.  
zones are less common but occur within this  
ion.

**ced Argillic (AA):** Pyrophyllite with minor  
e alteration on immediate margins of silica  
ion

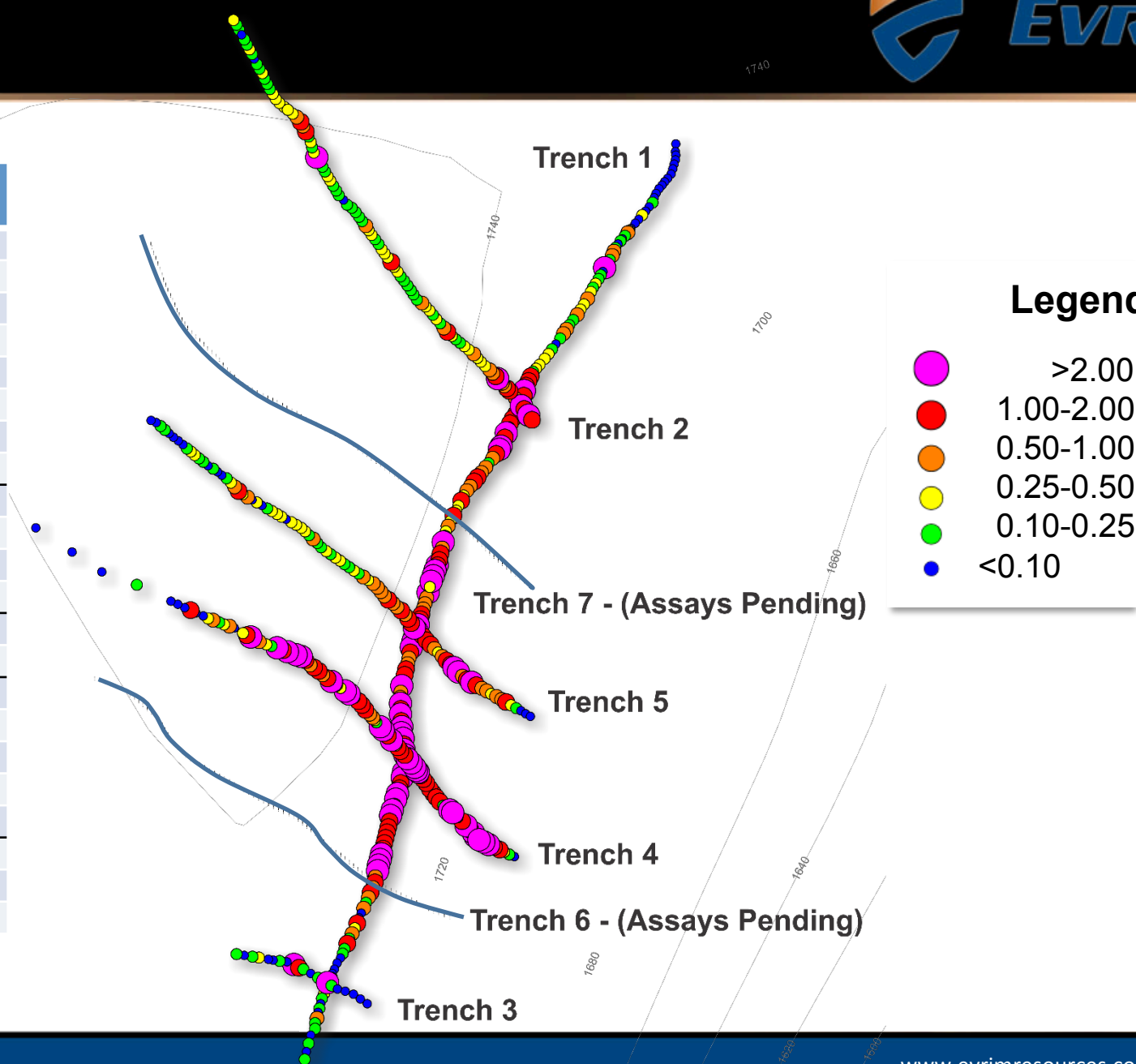
**c:** Bleached rocks due to kaolinite and illite  
ion

**itic:** Typically below 1050 meters above sea  
s distal chlorite and smectite alteration



# e – Trenching 2018

	From	To	Width	Au (g/t)
	0	351.8	351.8	1.28
	44.6	307.8	263.2	1.67
	92.3	285.8	193.5	2.09
	113.8	121.8	8	5.77
	157.8	277.8	120	2.46
	187.8	199.8	12	4.25
	223.8	235.8	12	3.98
	269.8	277.8	8	5.22
	0	184.1	184.1	0.85
	45	63	18	1.34
	125	184.1	59.1	1.79
	162.5	184.1	21.6	4.18
	0	53.7	53.7	0.28
	21.7	36.7	15	0.76
	0	156.2	156.2	9.57
	29.4	150.2	120.8	12.30
	38.6	63.6	25	4.12
	85.6	150.2	64.6	20.85
	100.6	108.1	7.5	163.31
	0	174	174	0.62
	96	166	70	1.16
	114	154	40	1.45



# e – Trench Photos



**Sampling Trench 1**



**Very fine gold panned from powdery saccharoidal quartz in Trench 4**

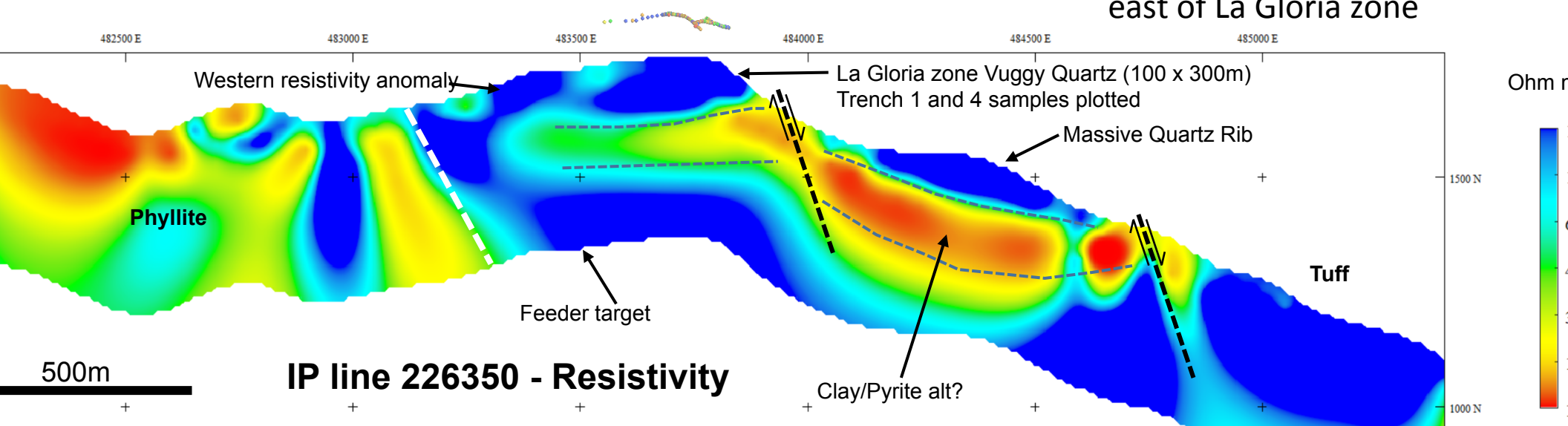
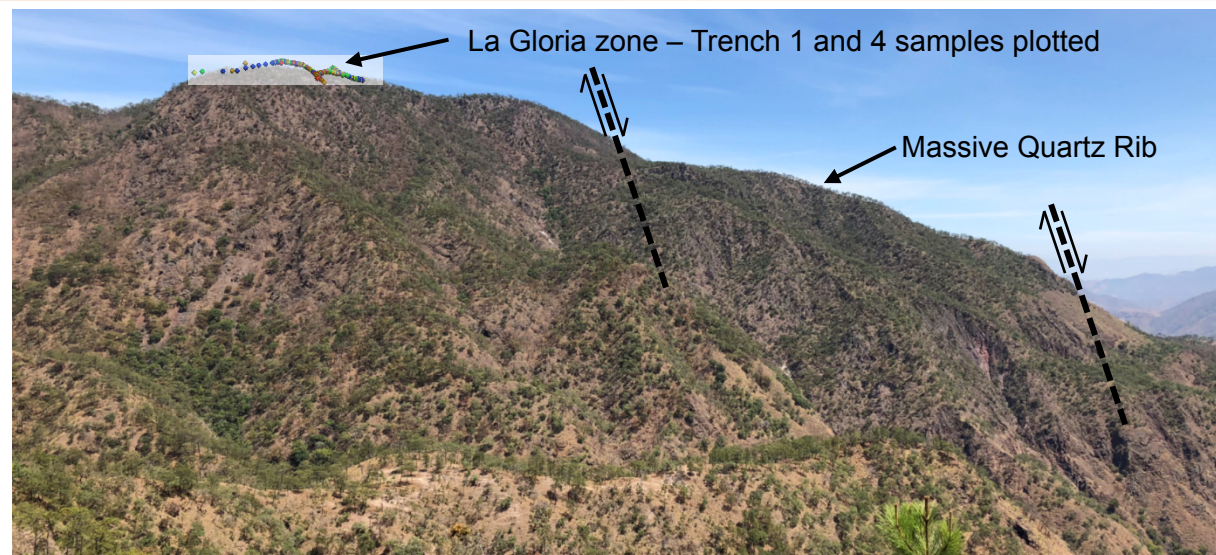


**Saccharoidal quartz and hematite sample in Trench 4 grading 29**

# e – IP Geophysics



- West and north-west of La Gloria zone is masked by units that cover the system; rhyolite flows, Wifi Tuff, He-Si breccia(?)
- La Gloria is a small erosional window into the mineralized part of the system
- North north-east trending normal faults down-drop geology to the east of La Gloria zone



# e – Current Work and Next Steps



al community engagement completed  
oping, trenching, soil survey and geophysics  
pleted  
2 million placement with Newmont Mining  
**000 metre drill program is planned to start mid-**  
**October**



## SUMMARY

Very early stage of exploration  
Consistent, high grade mineralization at surface  
with IP giving confidence in depth potential  
Classic high sulphidation textures, geochemistry  
and alteration  
La Gloria Zone a small part of a larger alteration  
zone that requires further exploration



# Asset Portfolio



## Ermitaño Deposit, Sonora, Mexico

40,000 ounces gold equivalent (40.8 million ounces silver equivalent\*)

100 metres from Santa Elena Mine

Project owned by First Majestic Silver

Company owns a 2% NSR with no buy-down

## Ababi Project, Sonora, Mexico

Exploration stage

Project owned by

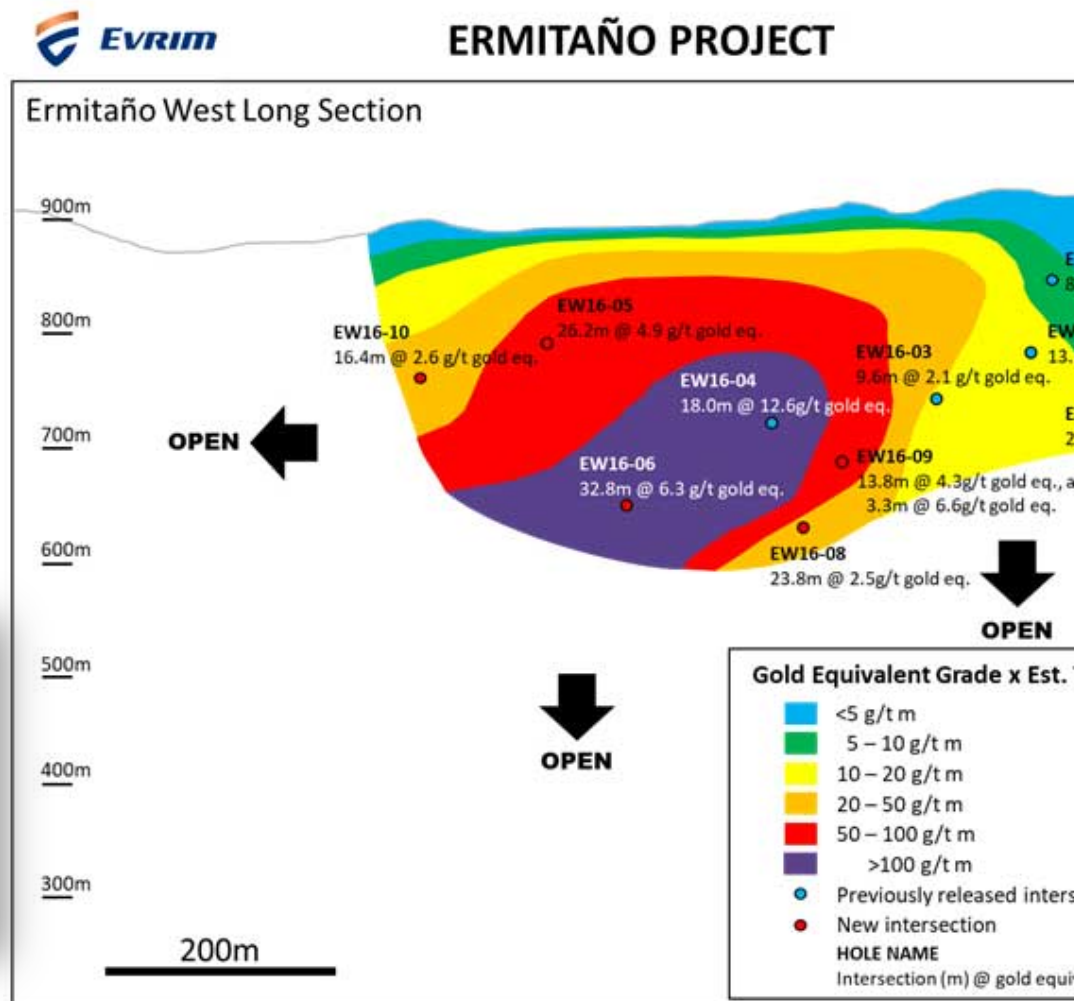
First Majestic Silver,

Company owns a 1.5% NSR

with no buy-down



12,000 metres of drilling in 2018



Source reported by FR on March 29, 2018 using \$1,450/oz Au; \$20/oz Ag

Financial Data at 2018-09-01	
Shares issued O/S	84,260,900
Warrants	6,370,455
Options	5,861,667
Shares F/D	96,493,022
Cash	\$13.5 million
Altius Minerals	14%
Adrian Day Asset Mgmt.	12%
Sprott Global	10%
Insider ownership	8%
Newmont Mining	6%