



# Corporate Presentation

Precious Metals Summit Zurich

November 5 & 6, 2018

# Disclaimer

---

Statements contained in this presentation that are not historical facts may be forward-looking statements within the meaning of the US Private Securities Litigation Reform Act of 1995 and forward looking information under similar Canadian legislation (collectively, "Forward Looking Information"). Forward Looking Information includes, but is not limited to, statements regarding the Company's strategic plans, property search and evaluation plans, estimated levels of mineral reserves, mineral resources and expenditures, success of exploration activities, and acquisition targets and commitments. Forward Looking Information is based on information currently available to the Company and the Company provides no assurance that actual results will meet management's expectations. In certain cases, Forward Looking Information may be identified by such terms as "anticipates", "believes", "could", "estimates", "expects", "may", "shall", "will", or "would", and is based on certain factors and assumptions regarding, among other things, the estimation of mineral resources, the realization of resource estimates, the timing and amount of future exploration and development expenditures, the availability of necessary financing and materials to continue to explore and develop properties, the receipt of necessary regulatory approvals, and assumptions with respect to currency fluctuations, environmental risks, title disputes or claims, and other similar matters. While the Company considers these assumptions to be reasonable based on information currently available to it, they may prove to be incorrect. Forward Looking Information involves known and unknown risks, uncertainties and other factors which may cause the actual results, performance or achievements of the Company to be materially different from any future results, performance or achievements expressed or implied by the Forward Looking Information. Such factors include risks inherent in the exploration and development of mineral deposits, risks relating to variations in mineral resources, grade or recovery rates resulting from current exploration and development activities, risks relating to changes in metal prices and the worldwide demand for and supply of metals, risks related to increased competition in the mining industry generally, risks related to current global financial conditions, uncertainties inherent in the estimation of mineral resources, access and supply risks, reliance on key personnel, operational risks inherent in the conduct of mining activities, risk of delays or increased costs during the development process and relating to the acquisition of licenses and permits, regulatory risks, risks related to disputes concerning property titles and interest, and environmental risks. This list is not exhaustive of the factors that may affect any of the Company's Forward Looking Information. These and other factors should be considered carefully and readers should not place undue reliance on the Company's Forward Looking Information. The Company does not undertake to update any Forward Looking Information or statements that may be made from time to time by the Company or on its behalf, except in accordance with applicable securities laws.

The technical content of this presentation has been prepared by Roger Moss, Ph.D., P.Geol. the company's qualified person.

# Labrador – Golden Opportunity

---

- Large under-explored properties, including the major portion of two greenstone belts
- Potential for discovery of new gold district(s)
- Experienced exploration management with success in finding gold deposits (>17 million oz)
- First mover advantage
- Results of aggressive initial exploration program already indicate district scale gold targets
- First stage drilling on selected targets in 2019
- Politically stable jurisdiction supportive of mineral exploration



# Exploration Management

---

## Shawn Ryan - Technical Advisor

- 20 years of gold exploration experience resulting in the discovery of 7.5M ounces Au in three deposits
- Recipient of the 1998 Yukon Chamber of Mines Prospector of the Year Award, 2010 Spud Huestis Award, and 2011 PDAC Prospector of the Year Award
- Founder & Technical Advisor of GroundTruth Exploration, developer of innovative exploration techniques (e.g. Drones to Drill) with significant experience in northern Canada



## Roger Moss, P.Geol - Chief Executive Officer

- Professional geologist with 20 years international experience in copper and gold exploration
- Instrumental in discovery of the multi-million ounce Navachab gold deposit in Namibia
- 16 years in senior management roles including 13 years as President and CEO of Labrador Gold
- Ph.D. from University of Toronto, currently adjunct Professor in Lassonde Mineral Engineering Program



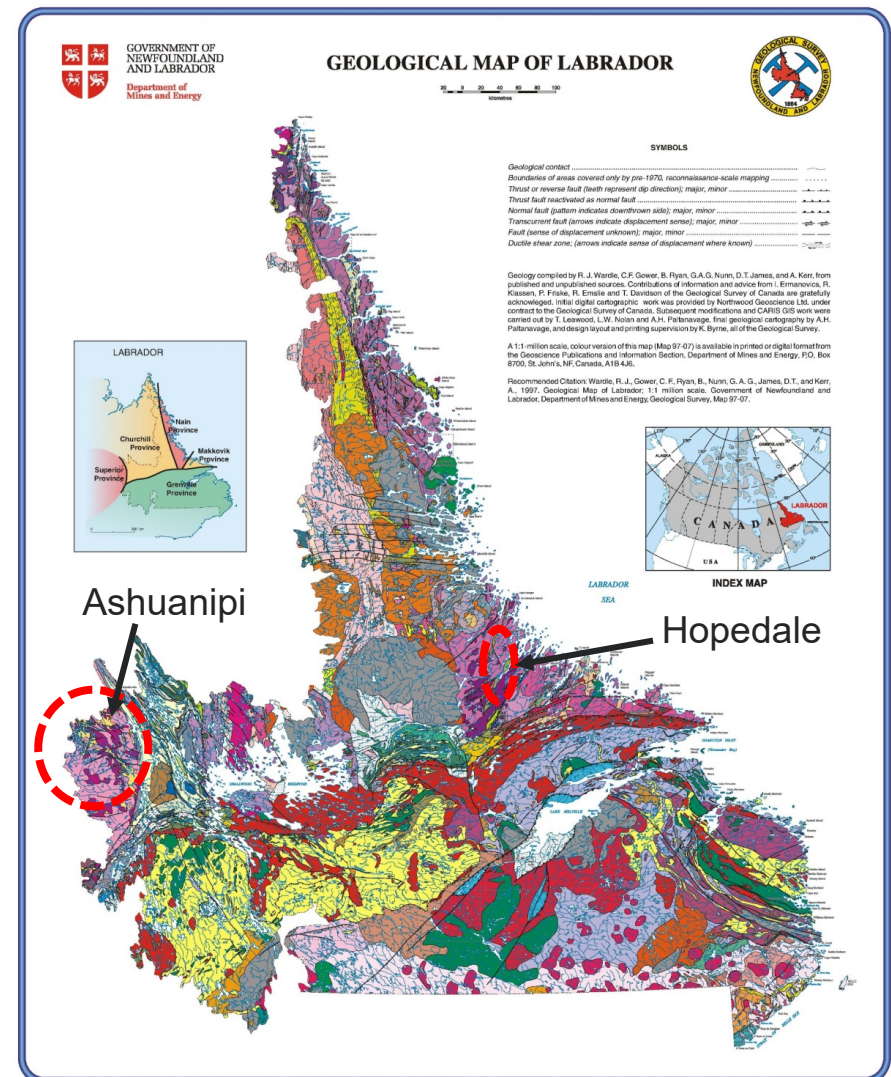
# Labrador Properties

## Ashuanipi Property

- Area: 896 square kilometres (km<sup>2</sup>)
- 35 km south of Schefferville linked by rail to Sept Isles in the south
- Target: Iron formation hosted gold

## Hopedale Property

- Area: 458 square kilometres (km<sup>2</sup>)
- East end of property on tidewater southeast of Hopedale
- Target: Greenstone hosted gold



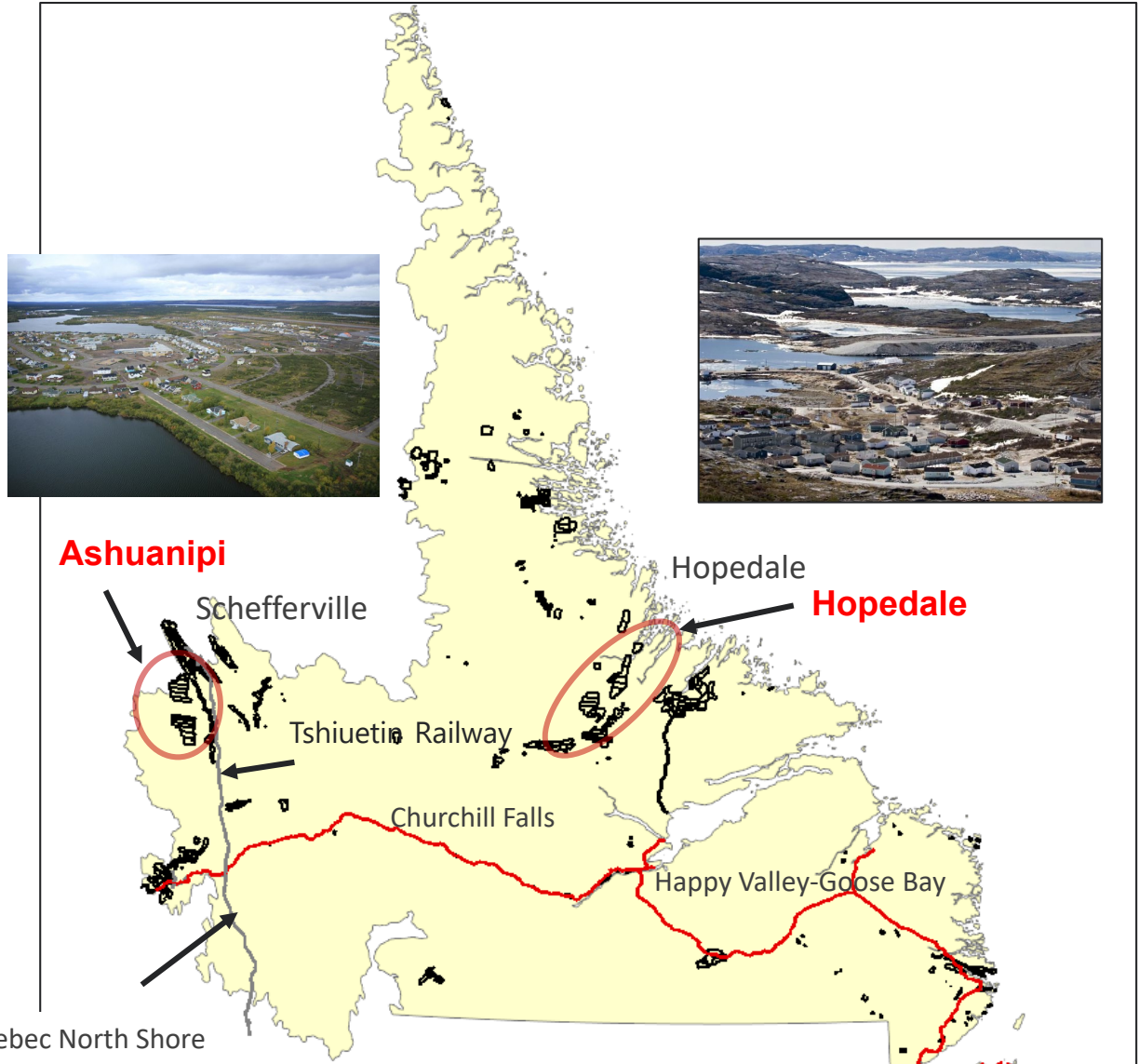
# Infrastructure

## Ashuanipi

- 35km south of Schefferville
- Schefferville linked by rail to port of Sept Iles to south

## Hopedale

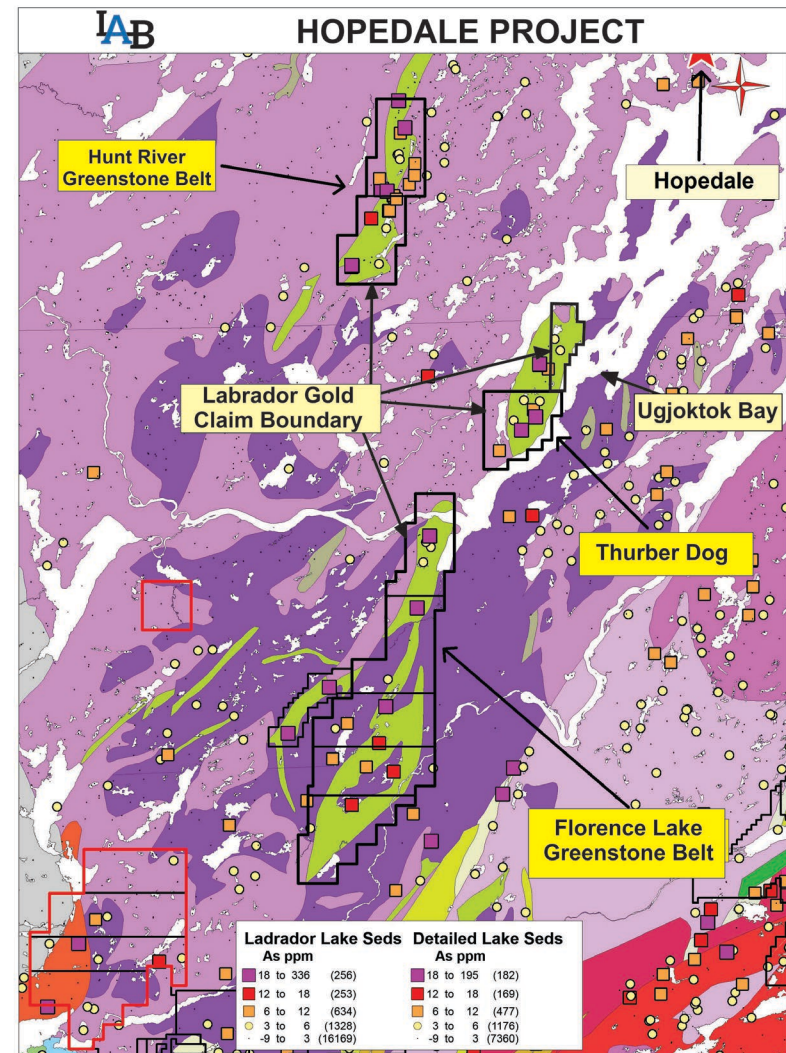
- Eastern claims on tide water
- 30km from community of Hopedale
- Daily air service from Happy Valley-Goose Bay



Quebec North Shore and Labrador Railway

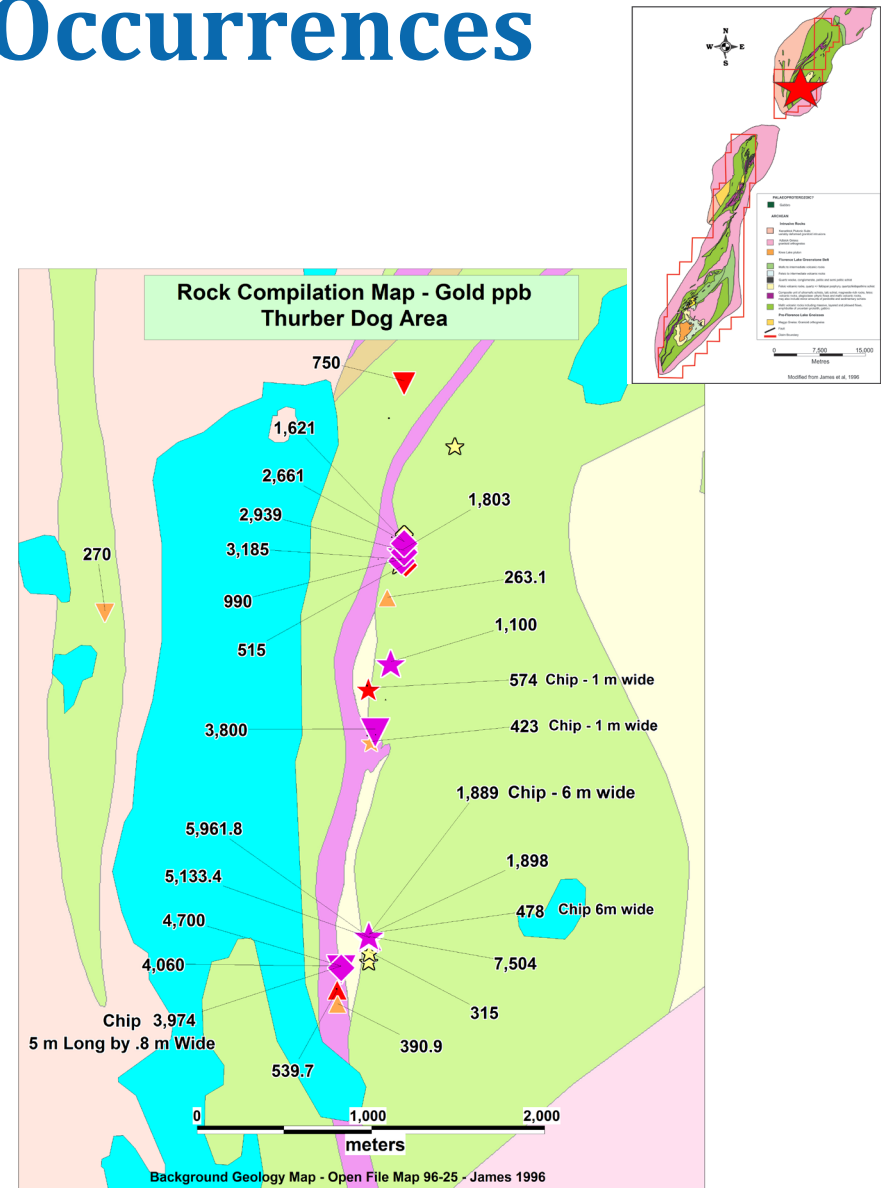
# Hopedale

- Hopedale claims cover most of the Hunt River and Florence Lake greenstone belts (~80 km)
- Florence Lake greenstone belt predominantly greenschist grade metamorphism
- Under explored for gold despite Thurber Dog showing assaying up to 7.5 grams per tonne gold
- Area of Hunt claims very limited prior staking
- Good correlation of gold with arsenic in both greenstone belts
- Nickel exploration identified significant strike length of carbonatized ultramafic volcanic rocks
- Significant (75%) airborne geophysical coverage from historical surveys completed in the 2006-2010 uranium exploration rush



# Thurber Dog – Gold Occurrences

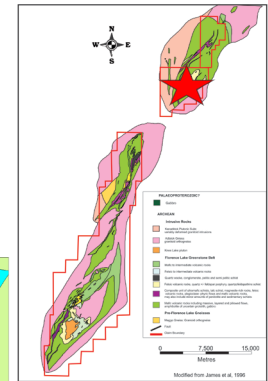
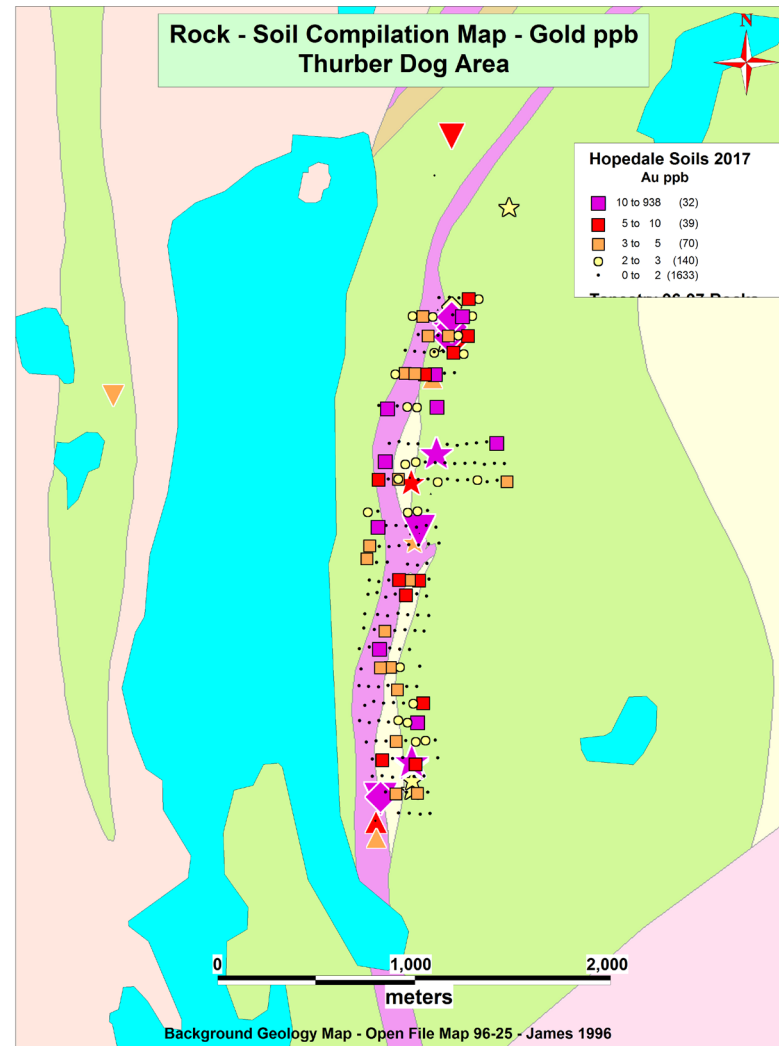
- Northern portion of Florence Lake greenstone belt
- Gold in rock samples with values up to 7.87 g/t in a composite grab and 3.97 g/t Au in a 5m chip channel sample of a quartz carbonate vein with 4.1 g/t from the wall rock occur intermittently over a 3km strike length
- Mineralization is hosted by intensely carbonatized ultramafic to mafic volcanics and felsic volcanic rocks/quartz-sericite schist





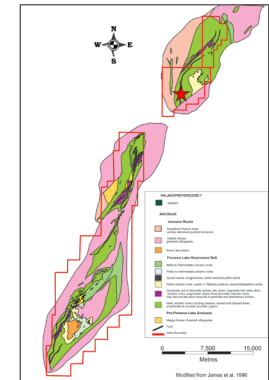
# Thurber Dog – Soils

- Soil samples over Thurber Dog area show anomalous gold associated with the gold occurrences.
- Anomalous gold also occurs between occurrences primarily along contact with ultramafic and mafic/felsic volcanics
- Suggests potential for further gold mineralization along the 3km strike length of the contact



# Thurber Dog Area Occurrences

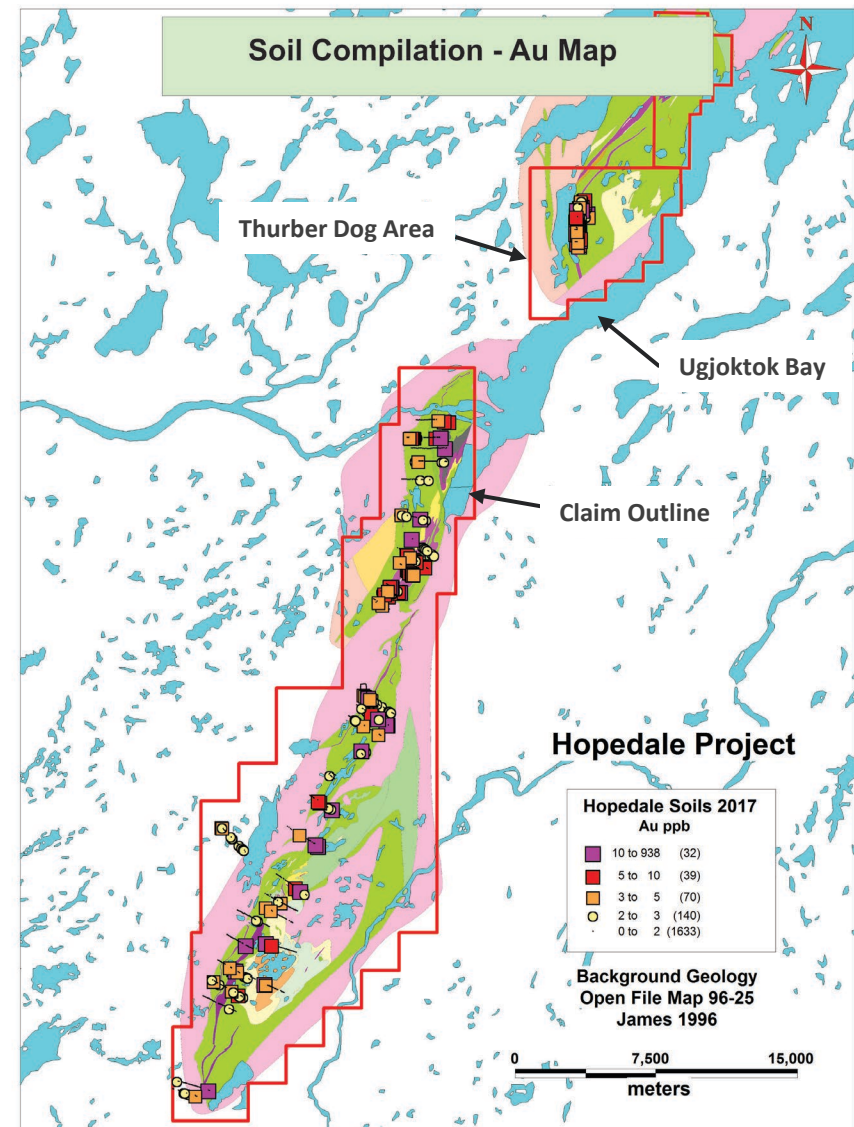
Thurber Dog showing assays up to 7.87 g/t Au in quartz phyrlic felsic metavolcanic rocks, Florence Lake greenstone belt



Carbonatized ultramafic volcanic with quartz veining and local arsenopyrite

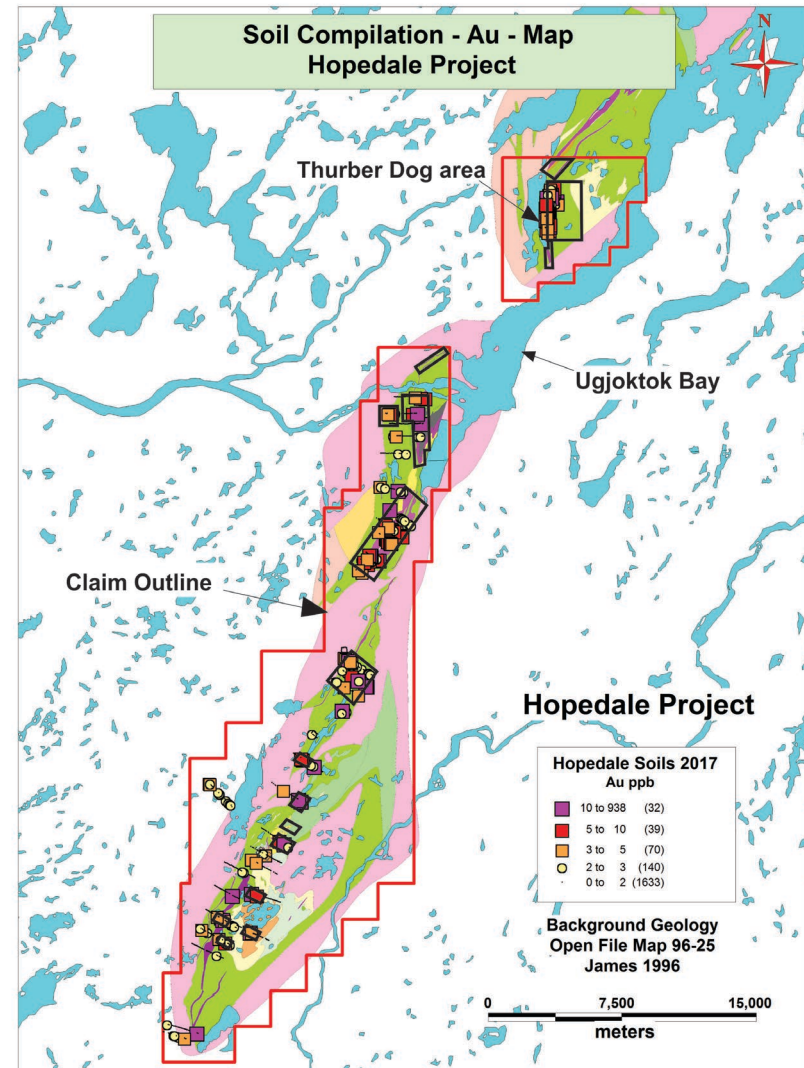
# Florence Lake Gold in Soils

- Initial soil and lake sediment sampling resulted in anomalous gold (up to 0.93 g/t Au) over 40 km along the southern portion of the greenstone belt
- Additional 3km of anomalous gold in vicinity of known Thurber Dog showing in the north
- Gold in soil samples highlight geological contacts as zones of potential enrichment
- LAB now controls 65km strike length of the Florence Lake Greenstone Belt
- Large portion of belt lies along Ugjoktok Bay - Tidewater



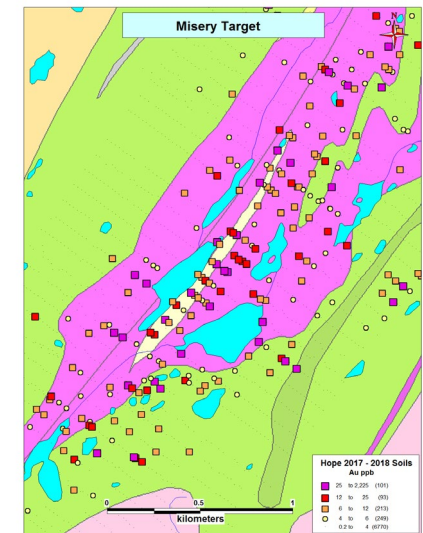
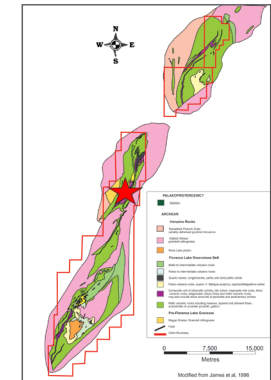
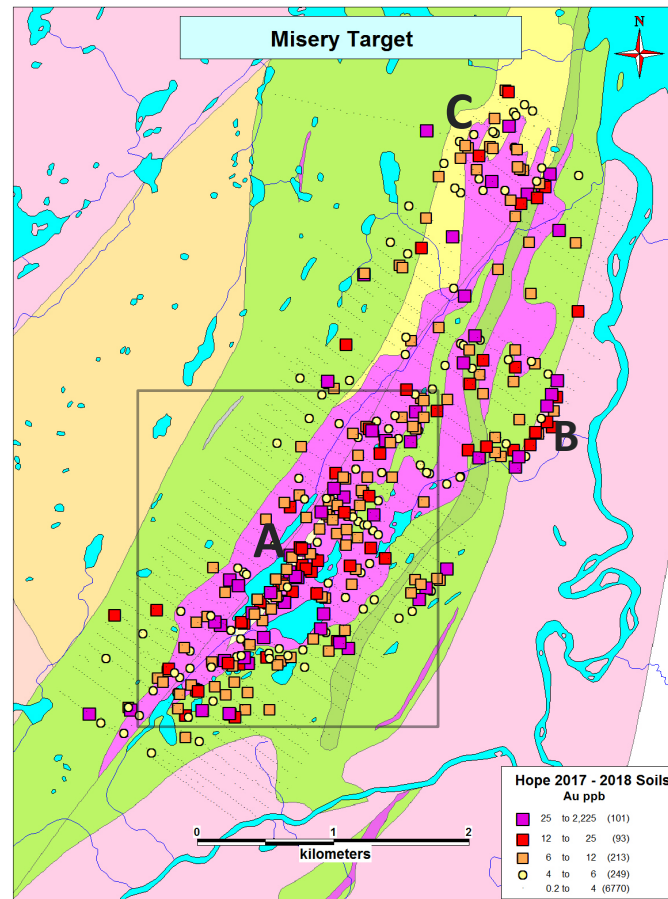
# 2018 Soil Sampling

- Detailed follow up of anomalous 2017 regional soil samples
- Three large grids and twelve smaller grids
- 100m line spacing 25m sample spacing
- 11,212 samples collected



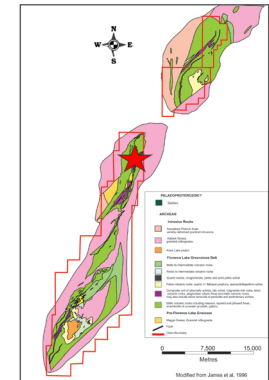
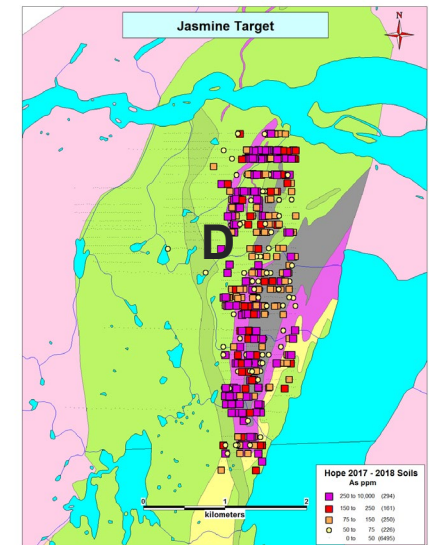
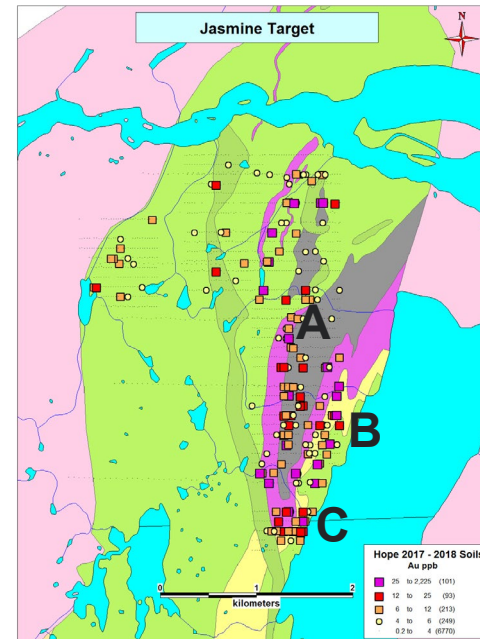
# Soil Sampling – Misery Grid

- 5.7km by 2km grid over 2017 anomalies
- covers strong carbonate alteration of ultramafic volcanic rocks
- Three significant gold anomalies:
  - A:** contacts between ultramafic rocks and felsic and mafic volcanics
  - B:** contact between mafic volcanic rocks and felsic intrusive
  - C:** contacts between ultramafic rocks and felsic and mafic volcanics



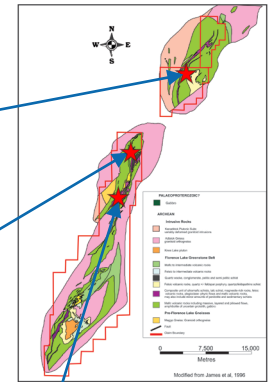
# Soil Sampling – Jasmine - Shirley Grid

- Anomalous gold values associated with ultramafic –sedimentary rock (A) or ultramafic – felsic volcanic (B) contacts
- In south part of grid gold anomalies associated with fold nose in ultramafic volcanics (C)
- Strong arsenic anomaly in north part of grid (D) associated with massive arsenopyrite mineralization associated with quartz veins



# Mineralization/Alteration

Pyritic iron formation  
Thurber North



Massive arsenopyrite  
Shirley Zone



Carbonate (magnesite) altered  
ultramafics - Misery Zone

# Impact Drilling

---

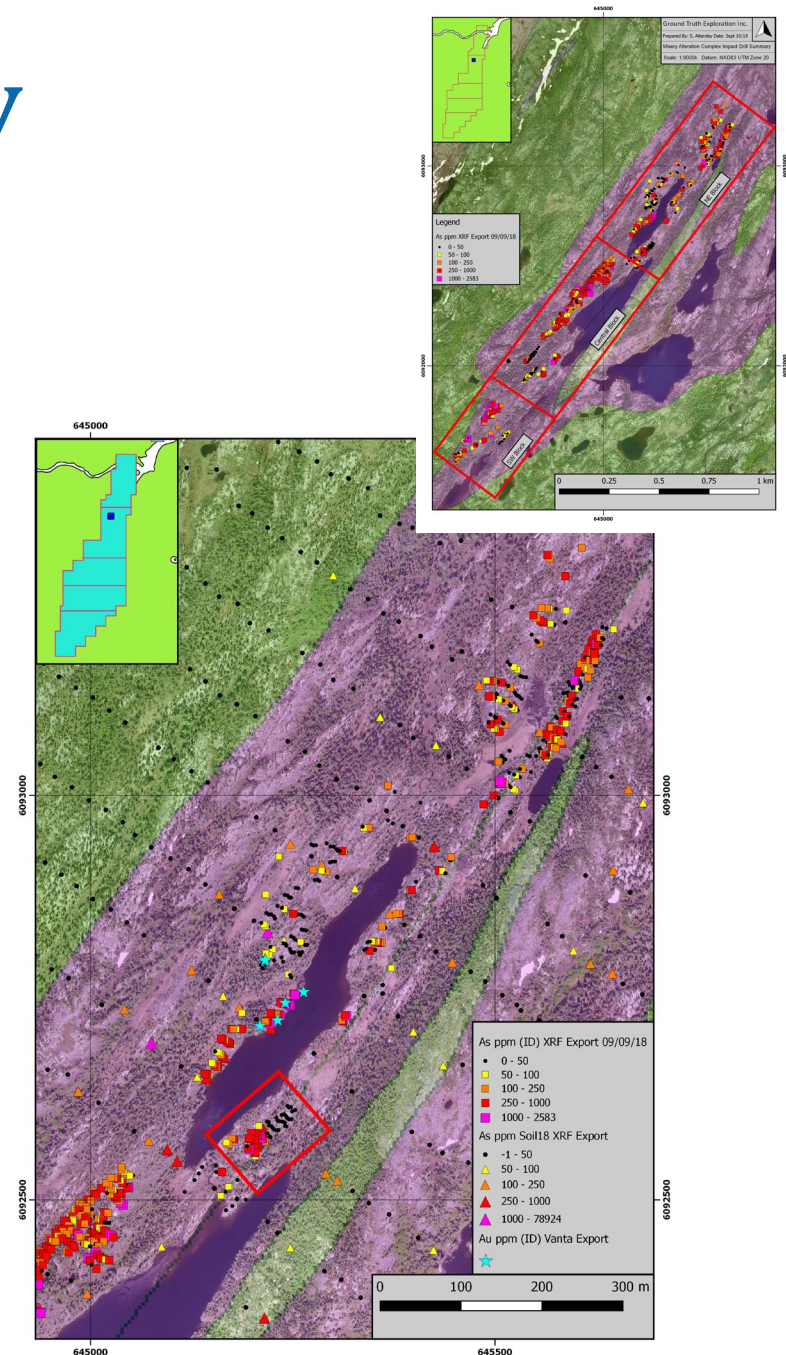


- Hand held impact drilling of mineralized/altered targets
- Provide homogenous sample for field XRF analyses
- Enables rapid follow up of most prospective targets
- 2,139 holes drilled in three main areas Misery, Jasmine-Shirley and Thurber Dog



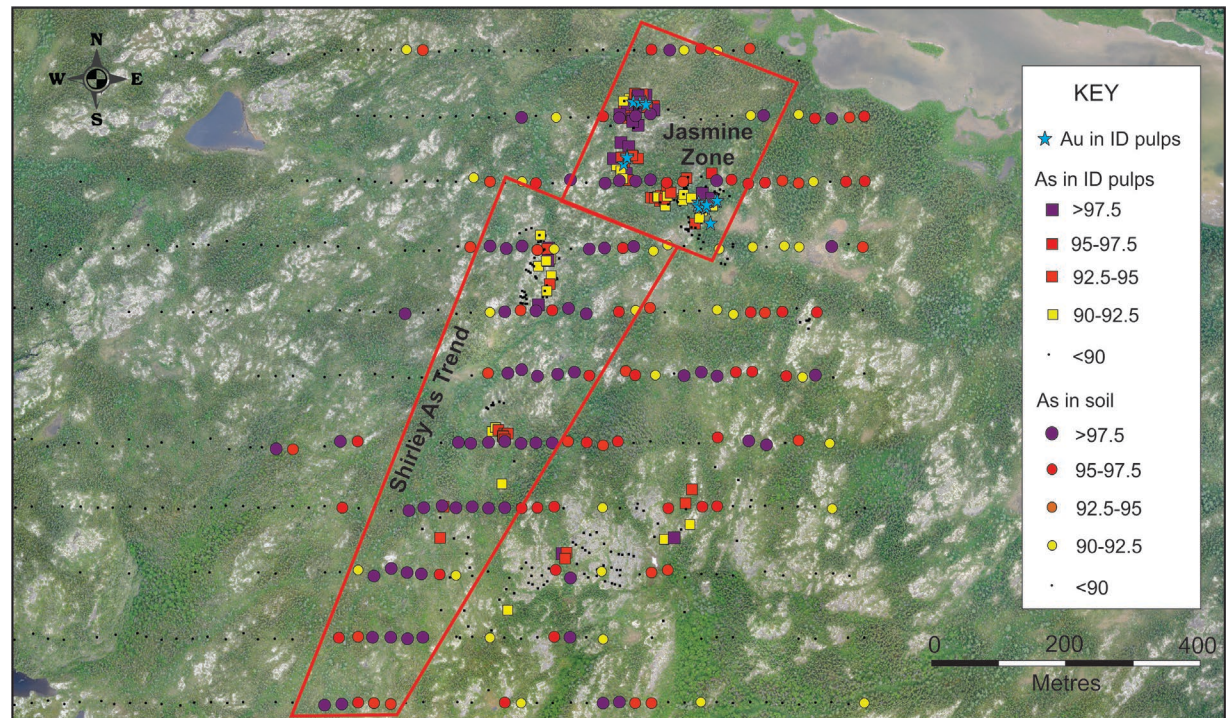
# Impact Drilling - Misery

- Holes drilled along north west side of Misery carbonate alteration zone
- Consistent arsenic anomalies over 2.3km strike length
- Several drill hole samples showed gold values
- Anomalies associated with carbonatized ultramafic rocks and contacts between ultramafics and felsic and mafic volcanic rocks

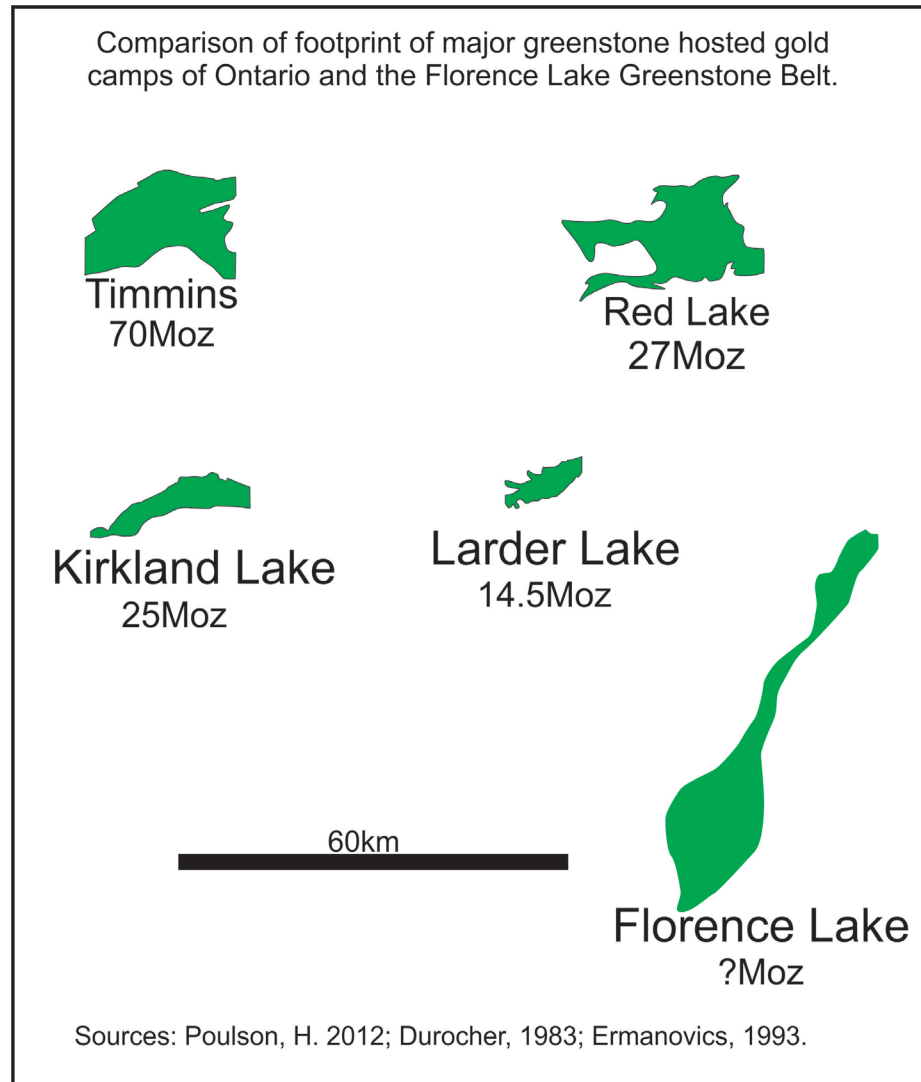


# Impact Drilling – Jasmine-Shirley

- Good As anomalies in Jasmine Zone and north Shirley
- Coincides with strong anomalous As trend in soils
- Samples with elevated gold in Jasmine Zone



# Greenstone Belt Comparison



# Florence Lake Gold Comparison

## PROVINCE-SCALE PARAMETERS

Gold Deposits	Tectonic Setting		Crustal-Scale Faults		Complexity of Geometry		Metamorphic Grade		Felsic Porphyries/Lamprophyres	
	Accretion	Collison/ Delamination	Present	Absent	Complex	Simple	Green.	Amph.	Common	Rare
<b>Hollinger-McIntyre</b> Timmins, CAN	XX		XX		XX		XX		XX	
<b>Golden Mile</b> Kalgoorlie, AUS	X	X	XX		XX		XX		XX	
<b>Florence Lake</b> Labrador, CAN	<b>X?</b>		<b>XX</b>		<b>X</b>		<b>XX</b>		<b>XX</b>	

## DEPOSIT-SCALE PARAMETERS

Gold Deposits	Major Host Rock			Major Structural Control		Granitoids		Fluid Oxidation State			Overprinting	
	m	f	s	Shears	Folds	Prox.	Dist.	Ox.	n.	Red.	Strong	Weak
<b>Hollinger-McIntyre</b> Timmins, CAN	X	X		XX		X	X		XX		XX	
<b>Golden Mile</b> Kalgoorlie, AUS	XX			XX		XX		XX			XX	
<b>Florence Lake</b> Labrador, CAN	<b>XX</b>			<b>X?</b>		<b>XX</b>			<b>?</b>		<b>X?</b>	

Certainty of interpretation: XX = very certain, X = less certain. Abbreviations: Green. = greenschist, Amph. = amphibolite, m = mafic, f = felsic, s = sedimentary, Prox. = proximal, Dist. = distal, Ox. = oxidized, n. = neutral, Red. = reduced.

(Modified after Groves et al. 2003)

# Ashuanipi

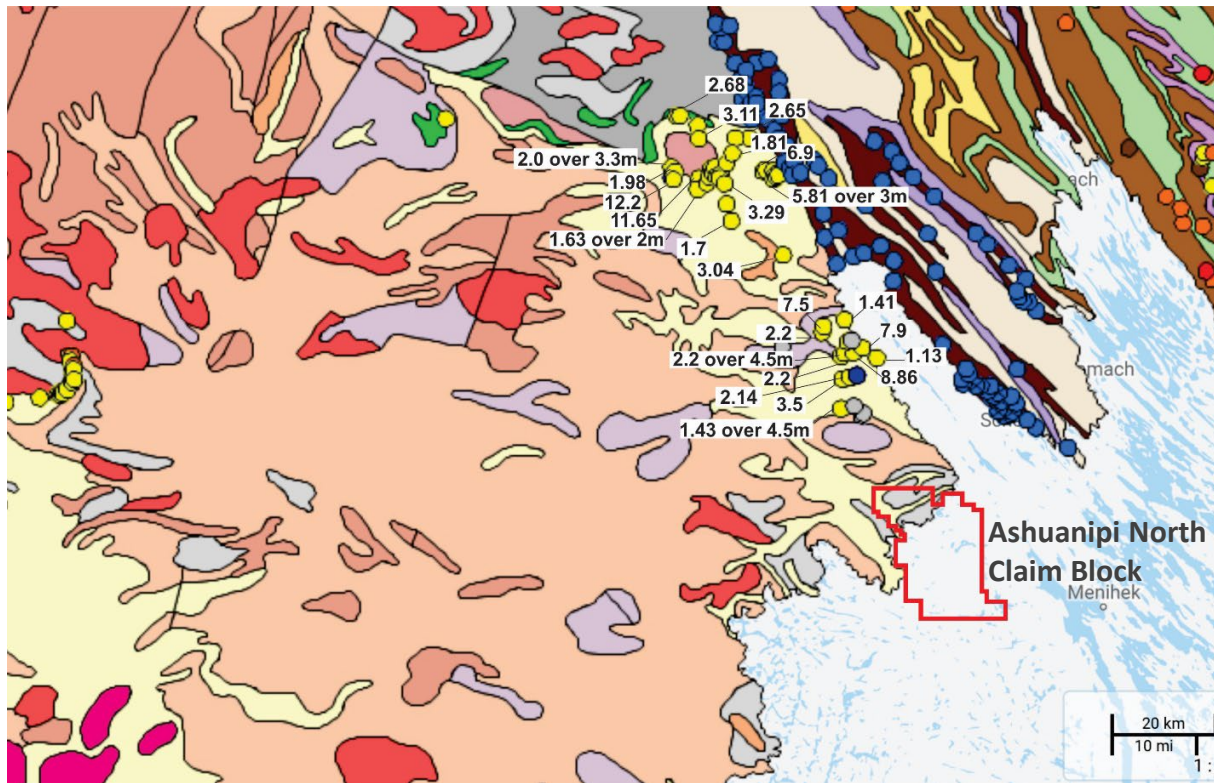
- In 2010, Rockland Minerals (now International Corona) announced a drill intersection of 19.55m of 2.23 g/t Au 30 km north of Ashuanipi property in similar geology
- Part of a 2km long north-south zone of anomalous gold (Ivanov, 2012)
- Higher gold values found in lake sediments in Labrador than around known gold showings on Quebec side
- Lack of detailed modern day exploration in Labrador portion of Ashuanipi complex compared to Quebec

Hole ID	From (m)	To (m)	Intersection (m)	Au (g/t)
WT09-04	40.39	59.94	19.55	2.23
including	53.85	55.88	2.03	10.21
RL10-17	11.45	19.7	8.25	1.24
	49.7	62.25	12.55	1.05
including	57.3	58.4	1.1	9.02



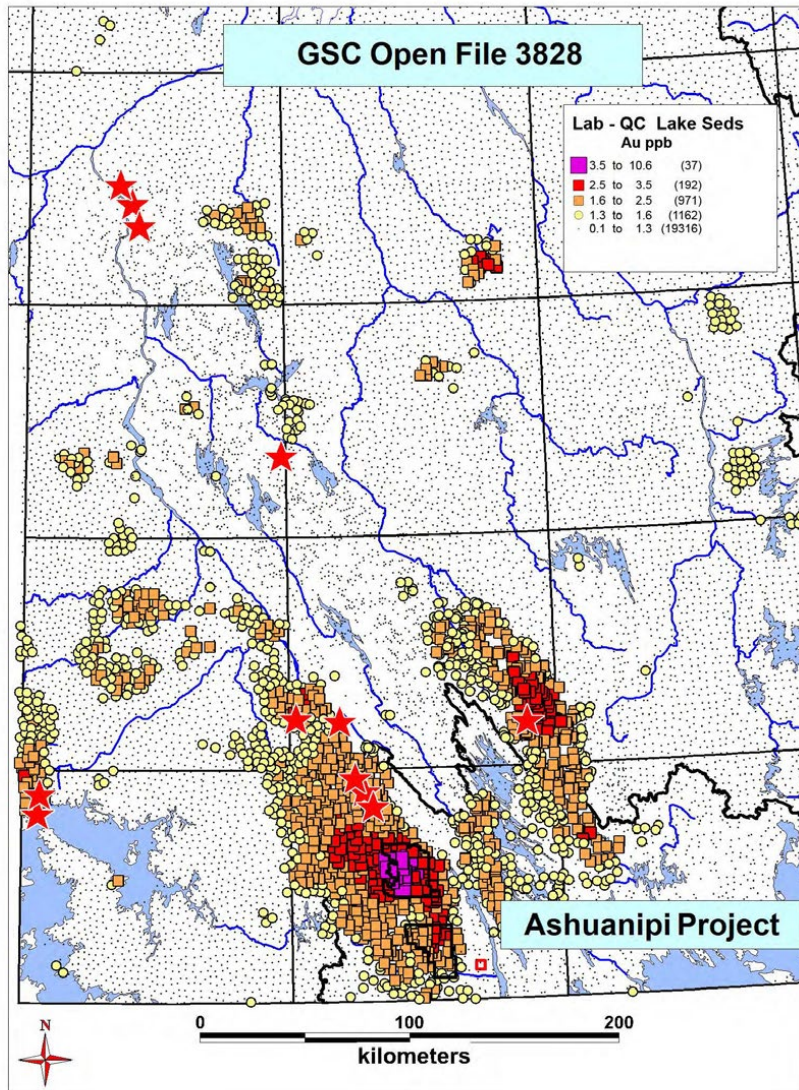
## WHY NOT LABRADOR?

# Quebec Gold Occurrences



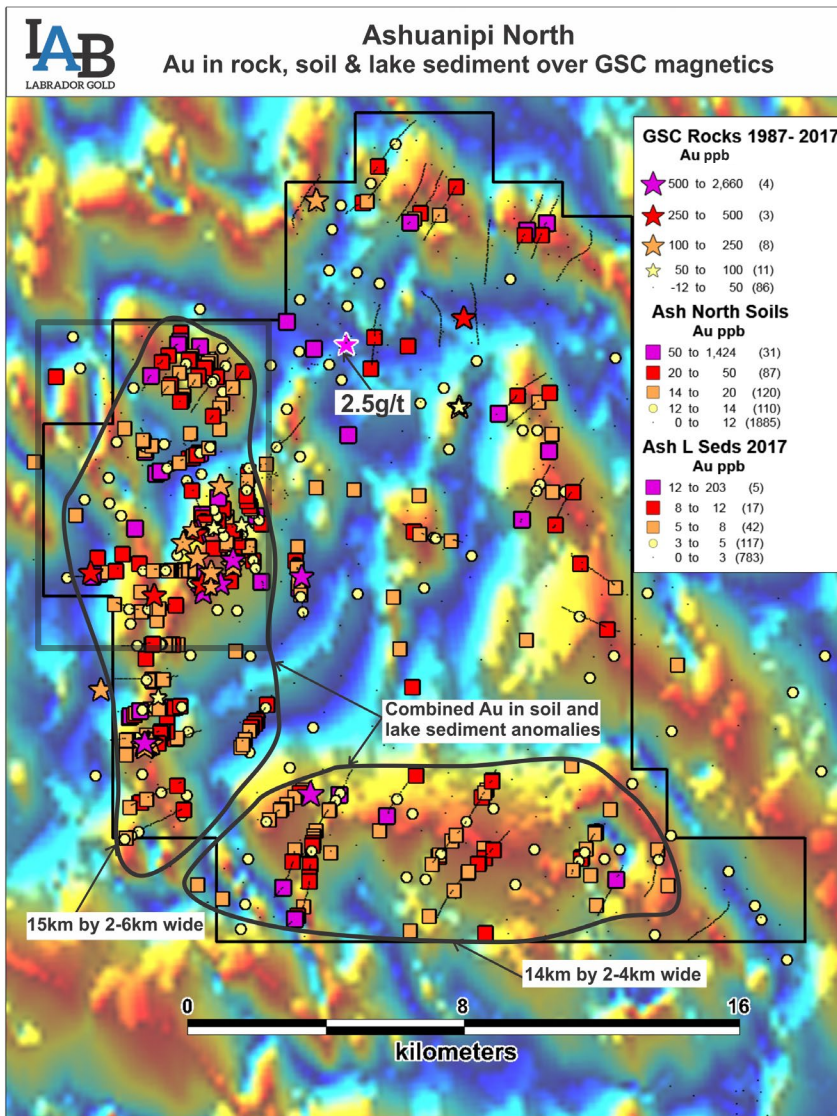
- Gold occurrences in Quebec to the north of the Ashuanipi Claims
- Gold occurs in the same rock types as those in the Ashuanipi project
- Labrador underexplored compared to Quebec

# GSC Lake Sediment Data



- Recently released lake sediment data from the GSC show largest gold anomaly in the 300 x 400km area is covered by the Ashuanipi north claim block
- Gold occurrences in Quebec (red stars in figure) show lower gold concentrations in lake sediments

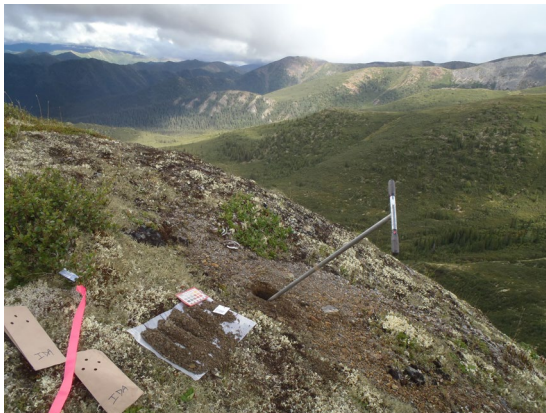
# Ashuanipi Compilation



- Two district scale gold anomalies outlined in both soils and lake sediments: a 15x3km north-south anomaly and a 14 x 3km east-west anomaly
- Gold anomalies in soils preferentially associated with magnetic highs, not specific rock types suggesting structural control
- 14 soils with more than 100 ppb Au, two samples with more than 1 g/tonne Au
- Based on results 172 claims were staked on the Quebec side of the border to cover the potential extension of the north –south trend
- Total area covered by claims is now 896 square kilometres



# 2018 Exploration



	Geochem	Prospecting	Mapping
Ashuanipi	✓	✓	✓
Hopedale	✓	✓	✓

- **Soil Sampling**

- Ashuanipi: 7,737 Samples
- Hopedale: 11,212 Samples

- **Rock Sampling**

- Hopedale Impact Drill: 2,139 Samples
- Hopedale Channel Sampling: 145 samples
- Hopedale Prospecting: 410 samples

# 2019 Proposed Exploration

---



- Follow up soil anomalies with detailed mapping and rock sampling
- Initial RAB drilling of drill targets

# Share Structure

---

Ticker	TSX-V: LAB
Share Price [November 2, 2018]	\$0.22
Market Capitalization	\$9.3 million
Issued and Outstanding Shares	51.6M
Warrants	20.9M
Options	2.8M
Fully Diluted	75.3M
Debt	Nil
Insider Ownership:	26%
Including: Plethora Precious Metals	12.8%
Shawn Ryan	8.6%
Management	4.6%

# For More Information

Roger Moss, President and CEO

+1-416-704-8291

E-mail: [rmoss@labradorgold.com](mailto:rmoss@labradorgold.com)

Website: [www.labradorgold.com](http://www.labradorgold.com)



@LabGoldCorp